

# POWER QUALITY ANALYZERS, METERS & LOGGERS

## Single-Phase Power Quality Analyzer

Special  
product  
features  
▼



### AEMC 8230 Power Pad Jr Specs

Provided by [www.AAATesters.com](http://www.AAATesters.com)

### PowerPad® Jr. Model 8230

**Measure and carry out diagnostic work and power quality work on single- or three-phase balanced load networks**

#### ► SPECIFICATIONS

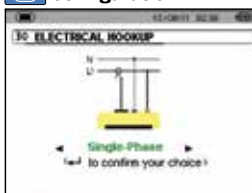
| MODEL                     | 8230  |
|---------------------------|---|
| <b>ELECTRICAL</b>         |   |
| <b>Voltage (TRMS)</b>     | Phase-to-Phase: 660V;<br>Phase-to-Neutral: 600V   |
| <b>Current (TRMS)</b>     | MN Clamp: 5mA to 6A/120A or 2 to 240A<br>MR Clamp: 10 to 1000Aac, 10 to 1400Aac<br>SR Clamp: 3 to 1200A<br>MiniFlex®: 10 to 1000A<br>AmpFlex®: 10 to 6500A <sup>(1)</sup> |
| <b>Frequency (Hz)</b>     | 40 to 70Hz  |
| <b>Other Measurements</b> | kW, kVAR, PF, DPF, kWh, kVARh, kVAh, K-Factor, Flicker, Harmonic Phase Shift, Phase Rotation  |
| <b>Harmonics</b>          | THD-R, THD-F, V, A, VA, 1 <sup>st</sup> to 50 <sup>th</sup> , Direction, Sequence   |
| <b>Sampling Frequency</b> | 256 samples/cycle   |
| <b>Data Storage</b>       | 1.5MB partitioned for waveforms, alarms and trend recording   |
| <b>Power Source</b>       | NiMH rechargeable battery pack (included)<br>AC Supply: 120/230VAc (50/60Hz)  |
| <b>Battery Life</b>       | ≥8 hrs with display on<br>≥40 hrs with display off (recording mode)   |
| <b>MECHANICAL</b>         |   |
| <b>Communication Port</b> | Optically isolated USB  |
| <b>Display</b>            | ¼ VGA (320 x 240) color LCD digital & graphical display with adjustable brightness & contrast   |
| <b>Dimensions</b>         | 8.3 x 4.3 x 2.4" (211 x 108 x 60mm)   |
| <b>Weight</b>             | 1.9 lbs (0.88kg)  |
| <b>Safety Rating</b>      | EN 61010, 600V CAT III, IP54, Pollution Degree 2  |

<sup>(1)</sup>Crest factor at 6500 = 1

#### ► FEATURES

- Measures up to 660Vrms or Vdc
- Measures up to 6500Aac or 1400Aac (probe dependent)
- Displays Min, Max and Average Volts and Amps, Crest Factor, Peak value and K-Factor
- Calculates and displays Watts, VARs and VA, Power Factor and Displacement Power Factor for single-phase and balanced three-phase
- Measures and records power systems (kW, VA, kVAR)
- Energy metering (kAh, VARh, kWh)
- Displays total harmonic distortion (THD-F and THD-R) for voltage and current
- Displays individual harmonic values and % for Volts and Amps through the 50<sup>th</sup> harmonic
- Captures, displays and stores inrush current waveforms and statistics
- Stores up to eight screen captures
- Stores up to 1MB of trend recorded data
- Configurable from DataView® software or front panel
- Download stored data to DataView® software via optical USB port (included)
- Captures up to 4096 alarm events from up to 10 different thresholds
- Displays and records up to 17 different power quality parameters
- Includes FREE DataView® software for configuring data storage, real-time waveform display, analysis and report generation
- The Max and Min RMS measurements are calculated every half-period

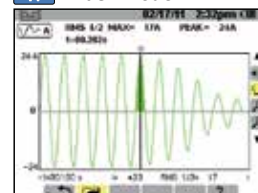
#### Configuration



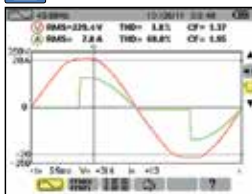
#### Recording Setup



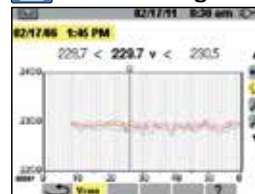
#### Inrush Mode



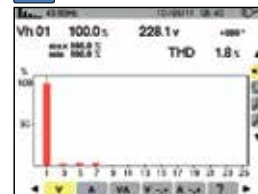
#### Waveform Mode



#### Trend Recording



#### Harmonics Mode



#### CATALOG NO.

#### DESCRIPTION

|         |   |
|---------|---|
| 2130.81 | PowerPad® Jr. Model 8230 (no probes)                |
| 2130.82 | PowerPad® Jr. Model 8230 w/MN93-BK                  |
| 2130.83 | PowerPad® Jr. Model 8230 w/SR193-BK                 |
| 2130.84 | PowerPad® Jr. Model 8230 w/24" 193-24-BK (AmpFlex®) |
| 2130.87 | PowerPad® Jr. Model 8230 w/MN193-BK                 |
| 2130.88 | PowerPad® Jr. Model 8230 w/MA193-10-BK              |



Technical Assistance (800) 343-1391

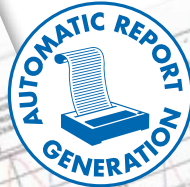
[www.aemc.com](http://www.aemc.com)

# DataView®

## Data Analysis and Reporting Software for Power Quality Meters



### Configure all functions of the Power Quality Meters

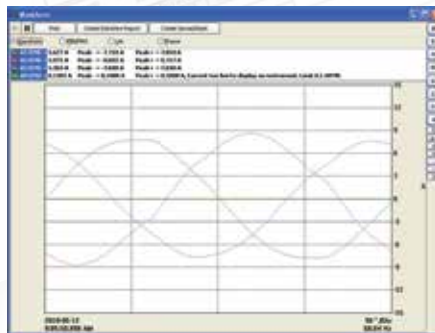


- Display and analyze real-time data on your PC
- Configure functions and parameters from your PC
- Customize views, templates and reports to your exact needs
- Create and store a complete library of configurations that can be uploaded as needed
- Zoom in and out and pan through sections of the graph to analyze the data
- Download, display and analyze recorded data
- Display waveforms, trend graphs, harmonic spectrums, text summaries, transients, event logs and stored alarms
- Print reports using standard or custom templates you design
- Free updates are available on our website [www.aemc.com](http://www.aemc.com)

### Typical DataView® Functional, Digital & Graphical Displays



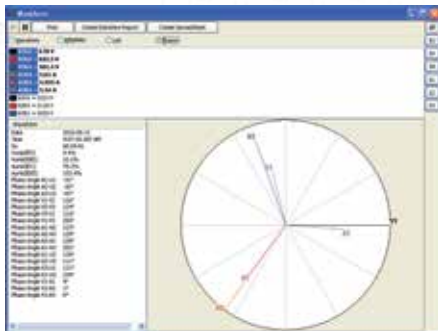
Clear and easy setup of all functions from one tabbed dialog box.



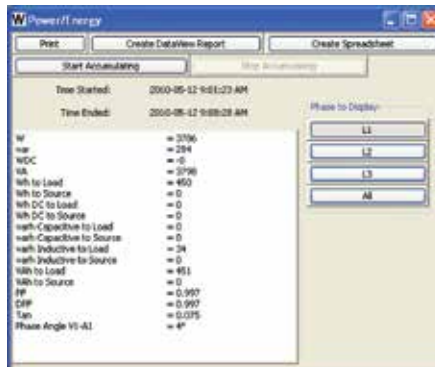
Display real-time waveforms by phase, parameter or total.



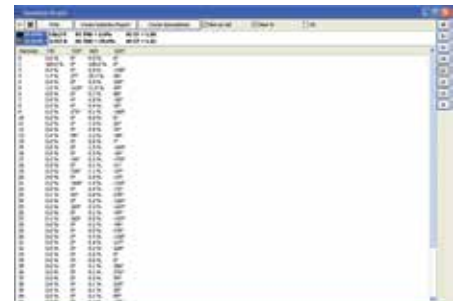
Display all harmonics from 1<sup>st</sup> to 50<sup>th</sup> in bargraph form for voltage, current and power.



Display real-time Phasor diagrams. Includes unbalance for both voltage and current.



Display power and energy parameters – both instantaneous and total.



Display harmonics in a text table from harmonic 0 (DC) through the 50<sup>th</sup>.