

# PIM Master™

High-Performance Passive Intermodulation Analyzer

**Featuring Patented Distance-to-PIM (DTP)™**  
**The Fastest Way to Pinpoint the Source of PIM**

<b>MW8208A</b>	<b>MW8209A</b>	<b>MW8219A</b>
Cellular Band 850 MHz	E-GSM Band 900 MHz	PCS/AWS Bands 1900/2100 MHz



# PIM Master™ Passive Intermodulation Analyzer



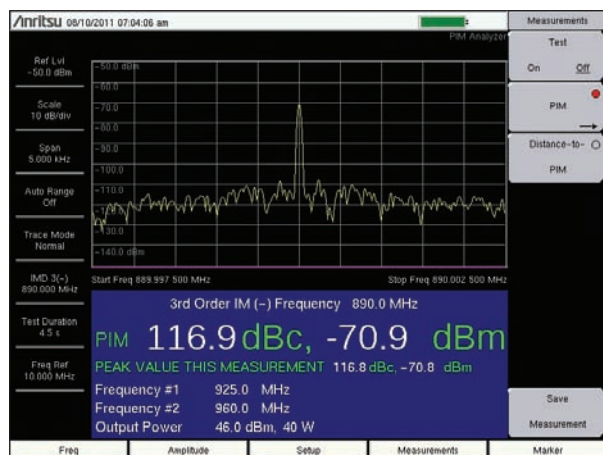
## PIM Master™ Overview



PIM Master top view with easy reference connection diagram



40 W 1900/2100 Residual PIM Measurement with GPS tagging  
Listen to relative PIM level with audible tone Save/Recall Setups for standardized testing



40 W 900 MHz PIM Measurement  
Plot instantaneous value or Max Hold value  
Peak Value displayed below the PIM Value

## PIM Master™ Introduction

Anritsu Company introduces its first generation high performance PIM testing solution for the Cellular, E-GSM, PCS, and AWS, frequency bands. Anritsu has developed the PIM Master to verify if receiver interference at a cell site is due to an intermodulation product of two or more transmit frequencies, also known as passive intermodulation (PIM).

The PIM Master generates two high power tones in the transmit band of a base station and Anritsu's family of handheld RF instruments' PIM Analyzer measures the 3<sup>rd</sup>, 5<sup>th</sup>, or 7<sup>th</sup> order intermodulation products in the receive band coming back down the same cable. And the GPS option will record the location of the measurement.

Anritsu's handheld instruments supporting the PIM Master include:

- Site Master™ S332E, S362E
- Spectrum Master™ MS271xE, MS2721B, MS272xC
- Cell Master™ MT8212E, MT8213E
- BTS Master™ MT8221B, MT8222B

## PIM Testing

The current standard of PIM testing offers a well-known system of two primary carriers and a calculated PIM frequency, which is monitored via a spectrum analyzer. This provides a measurement of the overall linearity of the antenna system and the surrounding environment.

As more power goes up the antenna lines a coaxial connection is more likely to cause a fault on a tower. Traffic through the site plays a big part – a relatively quiet site will not usually see the same performance problems that a busy site will see.

The main reason we use a PIM test is that it is the most comprehensive measure of electrical connection quality that is commercially available.

## PIM Testing versus Line Sweeping

A PIM test cannot, however, measure VSWR. This means the test set will not see an open or short condition, unless the fault displays non-linear behavior. A return loss figure that is failing will not be determined with a PIM test measurement.

Components deteriorate as they age due to a number of issues, including poor mechanical design, poor installation, and moisture ingress (which is the most significant).

On-site faults can mostly be categorized into two main types: linearity related and impedance related.

PIM testing measurements reflect the overall linearity of an antenna feed line and Line Sweep measurements reflect the overall impedance matching of all of the components in an antenna feed line. Both tests need to be performed to ensure the overall quality of an antenna feed line. Passing one type of test (PIM or Line Sweep) does not guarantee the other test will pass.

## Symptoms of PIM problems

Many symptoms could be indicators of PIM problems. These include:

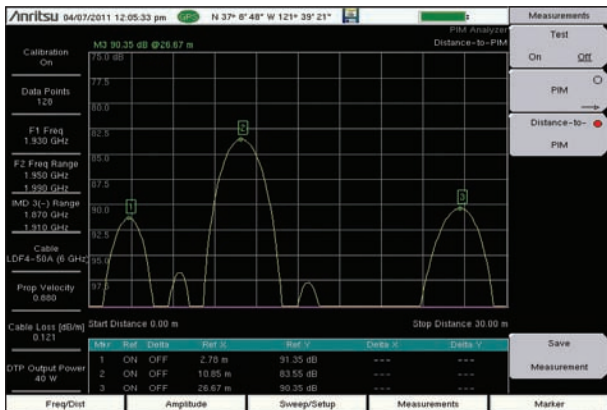
- Receiver desensitization (raised noise floor)
- Rx Diversity alarms
- Spectral re-growth in the transmitter mask
- Excessive dropped/blocked calls
- Cell site coverage shrinking
- Complaints of interference from neighboring cell site owners

# PIM Master™ Passive Intermodulation Analyzer

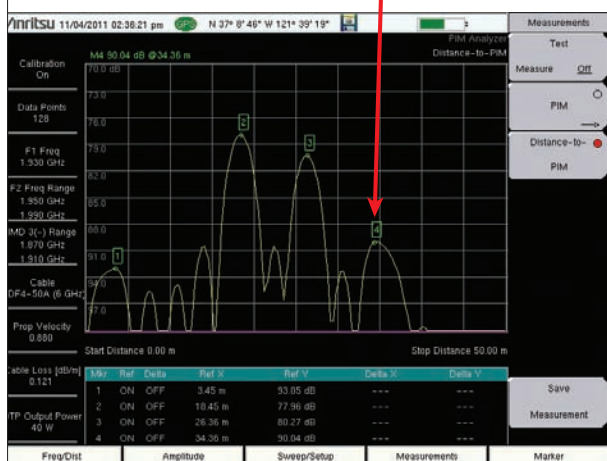


## PIM Master™ Overview

### Distance-to-PIM™ (DTP) Plots Relative PIM Level (dB) vs. Distance (meters)



Locating multiple PIM occurrences in antenna cables with DTP



Locating external PIM occurrences beyond the antenna

### Where is the PIM?

Anritsu labs has invented and succeeded in developing a patented technology that pinpoints PIM faults called Distance-to-PIM (DTP)™. No more wasting time rappelling down towers trying to locate PIM, no more wondering if the PIM is coming from the antenna system or the surrounding environment.

The Distance-to-PIM test is simple, immediate, and accurate. DTP informs the technician of the distance and relative magnitude of all the PIM sources simultaneously, both inside the antenna system and beyond the antenna.

DTP is similar to Distance-to-Fault (DTF), which Anritsu introduced in the Site Master™ in 1997, displaying distance versus impedance changes. DTP utilizes algorithms much like DTF to show distance versus the magnitude of non-linear faults.

DTP is a standard feature included with the PIM Master.

### Distance-to-PIM lab results

DTP shows the location for PIM problems within the antenna system, as well as distance to external PIM sources outside the antenna system. The DTP example to the left identified the roof obstruction at Marker 4 at 34.4 m. Markers 1, 2, and 3 correctly identified other PIM sources in the cable. This is an incredible step forward in improving the quality of information received from the on-site PIM test.

The Distance-to-PIM test offers far more insight than traditional PIM testing. This information can speed up repairs, control repair costs, and help plan budgets accurately. Comparison of PIM values over time can show if a device is deteriorating with age. This permits fault correction before a failure causes dropped or blocked calls.

### 2 x 40 Watt PIM Testing

PIM problems can be intermittent and power sensitive. This is often the case when PIM problems are just beginning to show up. This can be due to light corrosion, high traffic loading, or changing weather conditions activating environmental diodes. Using higher power levels can often force otherwise intermittent failures to become visible. Higher power levels may be required to find faults in a multicarrier antenna system and to discover microscopic arcing in connectors.

In many cases PIM faults cannot be discovered with just 2 x 20 Watts of power. With the ability to test at 40 Watts, one can spot serious problems that cannot be seen on a 20 Watt PIM tester.

### Storing and Recalling Setups and Measurements

When saving files many choices are available. One can save and recall:

- Set-up file
- Measurement file
- Jpeg screen shot (save only)

Saving and recalling setups makes it quicker to run the same tests over and over again at different sites. Saving and recalling a measurement becomes a reference measurement at a site when you return to see if there has been any deterioration since the last time the site was tested.

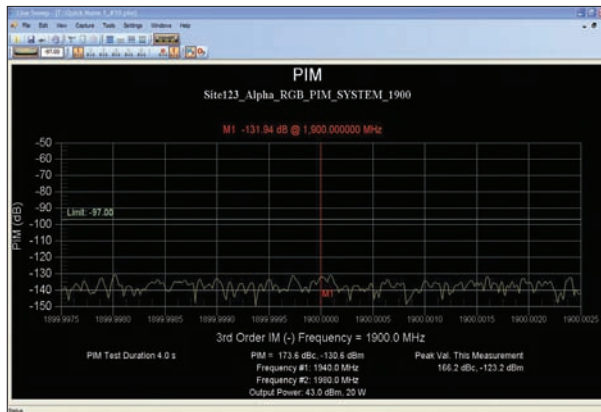
### Run Line Sweep Tests on the same instruments

Since both PIM measurements and Line Sweep measurements can be made on the same instruments (Site, Cell, or BTS Masters) one can efficiently make Line Sweep measurements at the same time. Now all PIM measurements and Line Sweep measurements are stored together on the same instrument. An installation contractor or technician only has to learn how to use one instrument to make all related antenna measurements for linearity and impedance testing.

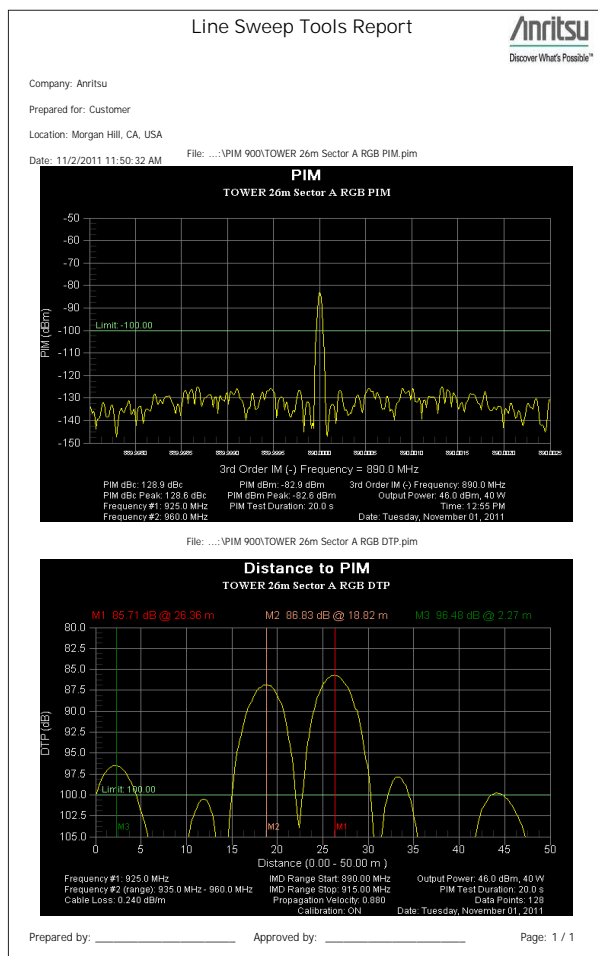
# PIM Master™ Passive Intermodulation Analyzer



## PIM Report Generation and Certified Training



PC Line Sweep Tool utilized for report generation on a PIM trace



Line Sweep Tools Report with Limit Lines

### Line Sweep Tools for Cable, Antenna, and PIM Analysis

Anritsu's Line Sweep Tools is a new generation post processing tool to manage, archive and report on all cable, antenna, and PIM analyzer sweeps. In one tool all measurements can be incorporated into one unified report per antenna system.

Now in one integrated report an operator can have all of the information on the integrity of an antenna system with the measurements of:

- PIM
- Return Loss
- Insertion Loss
- Distance-to-Fault

Contractors, technicians, and engineers can be more productive with one cohesive tool to learn and use in managing antenna line quality measurements.

### PIM Master™ Certified PIM Measurement Training Course

Specialized PIM Master™ passive intermodulation measurement training is an intense one-day instructor led training course that focuses on making PIM measurements (theory and lab). This is modeled on our successful Site Master™ Certified Line Sweep course.

- Brief Course Outline
  - Definition and Description
  - How PIM differs from Return Loss
  - Why is PIM a problem
  - What causes PIM
  - How to test for PIM
  - PIM test equipment
  - PIM testing process
  - Hints for successful testing
  - Assessing Results
- Labs
  - Hooking up the equipment and confirming proper operation
  - Measuring known good and bad devices
  - Device measurement practice
- Exams
  - Theory and safety
  - Hands-on practical
- Certification (after passing exams)
  - Certificate of Completion
  - Wallet-sized photo ID

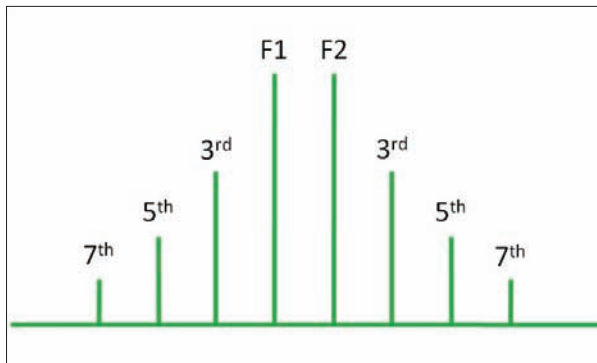
Students will learn technical aspects of PIM measurements, how to set up a PIM measurement, useful examples of what works and what doesn't, interpreting results, and locating the PIM.

### Customer Support

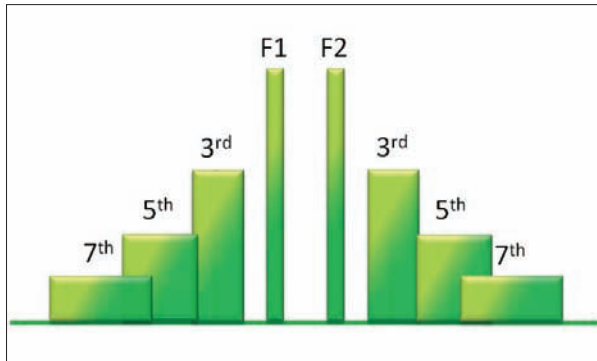
Like all Anritsu products, the PIM Master has a range of support products, services and training allowing you to maximize your return-on-investment.

- Anritsu Line Sweep Tool for report generation
- A full line of PIM testing accessories
- Extended warranty
- PIM Certified Technician Training Course
- Made in the USA

With Anritsu's design know-how and demanding production testing and performance verification you can count on the PIM Master to give you years of reliable dependable service.



Carriers F1 and F2 with 3<sup>rd</sup> through 7<sup>th</sup> order products



PIM Bandwidth increases with the order of the product



Corrosion (rust) in view of the antenna can cause PIM



Rusty rooftops and fences can be prime sources of PIM

### What is PIM?

PIM is a form of intermodulation distortion that occurs in passive components normally thought of as linear, such as filters, combiners, surge protectors, cables, connectors, and antennas. However, when subject to the high RF powers found in cellular systems, these devices can generate spurious signals.

PIM shows up as a set of unwanted signals created by the mixing of two or more strong RF signals in a non-linear device, such as in a loose or corroded connector, or in nearby rust. Other names for PIM include the “diode effect” and the “rusty bolt effect.”

This pair of formulas can predict PIM frequencies for two carriers:

$$IM_{n+m} = nF1 - mF2$$

$$IM_{n+m} = nF2 - mF1$$

F1 and F2 are the Tx carrier frequencies and the constants n and m are positive integers. When referring to PIM products, the sum of n + m is called the product order, so if m is 2 and n is 1, the result (2+1=3) is referred to as a third order product or IM3.

Typically, the third order product is the strongest causing the most harm when they fall into the Rx band. Because PIM amplitude becomes lower as the order increases, higher order products typically are not strong enough to cause direct frequency problems, but they usually assist in raising the adjacent noise floor.

Once this raised noise floor crosses into the Rx band, it then has an open door (and sometimes gain via an LNA) into the BTS.

It is important to recognize that intermodulation created from modulated signals occupies more bandwidth than the fundamentals. PIM products can be very wide band, covering wide swaths of frequencies.

### Why has PIM become an issue recently?

The introduction of high-speed data within mobile communications devices has increased the network traffic within a cellular system to the degree that it is greatly affecting network performance.

As extra cellular transmitters and modulation formats are commissioned into service in new or existing sites, the statistical performance can appear to change dramatically. Ultimately, this can result in poor site/sector performance and reduced coverage, and this is why testing for PIM is now required in the field.

PIM has come to the forefront of network problems recently due to a variety of reasons which can be any combination of the following:

- Higher RF power
  - Multiband systems on the same antenna lines
  - Fully loaded multicarrier systems
  - High density/traffic sites – heavily loaded
- Wideband receive filters
- Duplex antenna lines
- Wider bandwidth signals up to 5, 10, and 20 MHz
- Aging infrastructure – primarily connectors corroding and loosening
- Environmental diodes created by corrosion in the surrounding area
- Intermittent environmental diodes due to wet and dry conditions
- Neighboring cell sites generating PIM

An on site PIM test is a comprehensive measure of linearity and construction quality. For more information about PIM testing refer to our whitepaper “Troubleshooting Passive Intermodulation Problems in the Field” document number 11410-00586.

# PIM Master™ Specifications

## General Specifications

All specifications and characteristics apply under the following conditions, unless otherwise stated: 1) After 5 minutes of warm-up time, where the instrument is left in the ON state; 2) All specifications apply when using internal reference; 3) All specifications subject to change without notice; 4) Typical performance is the measured performance of an average unit; 5) Recommended calibration cycle is 12 months.

### Measurements

PIM	3 <sup>rd</sup> , 5 <sup>th</sup> , and 7 <sup>th</sup> order intermodulation product in receive band (user selectable)
Noise Floor	Rx noise floor of base station
Distance-to-PIM	Distance and magnitude of multiple PIM sources

### Instrument Setup Parameters

Instruments Supported	Site Master™ S3x2E, Spectrum Master™ MS271xE, MS2721B, MA272XC Cell Master™ MT821xE, BTS Master™ MT8221B or MT8222B
Frequency	Carrier F1, Carrier F2, Intermod Order (3 <sup>rd</sup> , 5 <sup>th</sup> , 7 <sup>th</sup> ), Span
Amplitude	Ref Value, Scale, Ref Level Offset, Auto Range (On/Off), Amplitude Tone (On/Off)
Setup	Output Power, Test Duration (1 to 60 s), Normal → A, Max Hold → A, Display Type (Trace, Bar)
Parameter Setup	F1, F2, Power
Limit Lines	Limit (Upper/Lower), On/Off, Limit Move, Limit Alarm (On/Off)
GPS	On/Off, 3.3/5.0 V
DTP	Cable Velocity, Distance, Calibrate
Measurements	PIM Test (Measure/Off) Measure Noise Floor, Save Measurement

### PIM Measurement Ranges

RF Test Power	Two CW tones of 20, 30, or 40 Watts (≈ 43, 45, 46 dBm) (user selectable)
Transmit Frequency Range	MW8219A – 1930 to 1990 MHz, 2110 to 2155 MHz MW8209A – 925 to 960 MHz MW8208A – 869 to 894 MHz
3 <sup>rd</sup> , 5 <sup>th</sup> , and 7 <sup>th</sup> Order Frequency Ranges	MW8219A – 1710 to 1755 MHz, 1850 to 1910 MHz MW8209A – 880 to 915 MHz MW8208A – 824 to 849 MHz
Residual PIM Performance	< –112 dBm/–155 dBc typical
Measurable PIM order	3 <sup>rd</sup> , 5 <sup>th</sup> , and 7 <sup>th</sup> order intermodulation product (if in band)
Distance-to-PIM	Distance and magnitude of multiple PIM sources

### PIM Master Connectors

Test Port	7/16 DIN, female, 50 Ω
RF Out	Type N, female, 50 Ω (connect to RF In on instrument)
10 MHz Out	BNC, female, 50 Ω, 10 MHz (connect to Ext. Ref. In on instrument)
USB Interface	Type B (connect to USB Type A port on instrument)
AC Power	IEC60320 C14

### Power

Emergency Stop	Red push button
AC Power	90-240 VAC, 50/60 Hz

### Electromagnetic Compatibility

European Union	CE Mark, EMC Directive 2004/108/EC
Australia and New Zealand	C-tick N274
Interference	EN 61326-1:2006
Emissions	EN 55011:2007
Immunity	EN 61000-4-2/-3/-4-4/-4-5/-4-6/-4-11

### Safety

Safety Class	2006/95/EC, EN 61010-1 Class 1
Product Safety	IEC 60950-1 when used with Company supplied Power cable

### Environmental

Operating Temperature	–10 °C to 55 °C
Maximum Humidity	95%
Shock	MIL-PRF-28800F Class 2
Storage	–51 °C to 71 °C
Altitude	4600 meters, operating and non-operating

### Size and Weight

Size	300 mm x 425 mm x 500 mm (12 in x 17 in x 20 in)
Weight	27 kg (59 lbs)

# PIM Master™ Ordering Information

## Ordering Information



Model Number	Model Number	Model Number	Description
MW8208A Cellular 850 MHz	MW8209A E-GSM band 900 MHz	MW8219A PCS/AWS band 1900/2100 MHz	PIM Master™ Passive Intermodulation Analyzer (requires S3x2E, MS271xE, MS272xC, MT821xE, MT8221B or MT8222B)
Options	Options	Options	
MW8208A-0425	MW8209A-0425	MW8219A-0425	Large Wheel Option (as shown in photo)
MW8208A-0098	MW8209A-0098	MW8219A-0098	Standard Calibration to Z540

## Standard Accessories (included with PIM Master)



Part Number	Description
10580-00280	PIM Master™ User Guide
11410-00546	PIM Master Product Brochure
2000-1635-R	3-cable PIM Interface (USB, RF, REF)
(country dependent)	AC Power Cable

## Accessory Kits



Part Number	Description
2000-1637-R	PIM Master Accessory Kit with 2.75 m Armored PIM Test Cable
PIM Accessory Kit includes	(Items below can be ordered separately)
MA82103A	Low PIM Termination, 700 MHz to 2200 MHz, 80 W CW, 7/16 DIN(f), 50 Ω
1091-390-R	PIM Standard, -80 dBm ± 3 dB @ 1775 MHz, 2x20 W, 7/16 DIN(m) to 7/16 DIN(f), 50 Ω
1091-403-R	PIM Standard, -80 dBm ± 3 dB @ 910 MHz, 2x20 W, 7/16 DIN(m) to 7/16 DIN(f), 50 Ω
16DD50-2.75-R	Armored PIM Test Cable, 2.75 m, 45 MHz to 3000 MHz, 7/16 DIN(m), 50 Ω
1091-386-R	Adapter, 7/16 DIN(f) to N(f), 50 Ω
1091-389-R	Adapter, 7/16 DIN(f) to N(m), 50 Ω
1091-387-R	Adapter, 7/16 DIN(f) to 7/16 DIN(m), 50 Ω
1091-388-R	Adapter, 7/16 DIN(f) to 7/16 DIN(f), 50 Ω
1091-385-R	Adapter, 7/16 DIN(m) to 7/16 DIN(m), 50 Ω
67135	Anritsu Backpack (For Handheld Products)
01-510	Crescent Wrench
01-512-R	1" 25 N-m Torque Wrench
01-513-R	1¼" 25 N-m Torque Wrench

## Optional Accessories

760-257-R	MW82xxA Transit Case
760-258-R	MW82xxA Accessory Transit Case
2000-1635-R	3-cable PIM Interface (USB, RF, REF)
10580-00315	Certified PIM Master™ PIM Measurement Training Course

## • U.S.A.

### Anritsu Company

1155 East Collins Boulevard, Suite 100,  
Richardson, TX, 75081 U.S.A.  
Toll Free: 1-800-ANRITSU (267-4878)  
Phone: +1-972-644-1777  
Fax: +1-972-671-1877

## • Canada

### Anritsu Electronics Ltd.

700 Silver Seven Road, Suite 120,  
Kanata, Ontario K2V 1C3, Canada  
Phone: +1-613-591-2003  
Fax: +1-613-591-1006

## • Brazil

### Anritsu Eletrônica Ltda.

Praça Amadeu Amaral, 27 - 1 Andar  
01327-010 - Bela Vista - São Paulo - SP - Brazil  
Phone: +55-11-3283-2511  
Fax: +55-11-3288-6940

## • Mexico

### Anritsu Company, S.A. de C.V.

Av. Ejército Nacional No. 579 Piso 9, Col. Granada  
11520 México, D.F., México  
Phone: +52-55-1101-2370  
Fax: +52-55-5254-3147

## • U.K.

### Anritsu EMEA Ltd.

200 Capability Green, Luton, Bedfordshire LU1 3LU, U.K.  
Phone: +44-1582-433280  
Fax: +44-1582-731303

## • France

### Anritsu S.A.

12 avenue du Québec, Batiment Iris 1-Silic 612,  
91140 VILLEBON SUR YVETTE, France  
Phone: +33-1-60-92-15-50  
Fax: +33-1-64-46-10-65

## • Germany

### Anritsu GmbH

Nemetschek Haus, Konrad-Zuse-Platz 1  
81829 München, Germany  
Phone: +49 (0) 89 442308-0  
Fax: +49 (0) 89 442308-55

## • Italy

### Anritsu S.r.l.

Via Elio Vittorini 129 00144 Roma Italy  
Phone: +39-06-509-9711  
Fax: +39-06-502-2425

## • Sweden

### Anritsu AB

Borgafjordsgatan 13, 164 40 KISTA, Sweden  
Phone: +46-8-534-707-00  
Fax: +46-8-534-707-30

## • Finland

### Anritsu AB

Teknobulevardi 3-5, FI-01530 Vantaa, Finland  
Phone: +358-20-741-8100  
Fax: +358-20-741-8111

## • Denmark

### Anritsu A/S (for Service Assurance)

### Anritsu AB (for Test & Measurement)

Kay Fiskers Plads 9, 2300 Copenhagen S, Denmark  
Phone: +45-7211-2200  
Fax: +45-7211-2210

## • Russia

### Anritsu EMEA Ltd.

### Representation Office in Russia

Tverskaya str. 16/2, bld. 1, 7th floor.  
Russia, 125009, Moscow  
Phone: +7-495-363-1694  
Fax: +7-495-935-8962

## • United Arab Emirates

### Anritsu EMEA Ltd.

### Dubai Liaison Office

P O Box 500413 - Dubai Internet City  
Al Thuraya Building, Tower 1, Suite 701, 7th Floor  
Dubai, United Arab Emirates  
Phone: +971-4-3670352  
Fax: +971-4-3688460

## • Singapore

### Anritsu Pte. Ltd.

60 Alexandra Terrace, #02-08, The Comtech (Lobby A)  
Singapore 118502  
Phone: +65-6282-2400  
Fax: +65-6282-2533

## • India

### Anritsu Pte. Ltd.

### India Branch Office

3rd Floor, Shri Lakshminarayan Niwas, #2726, 80 ft Road,  
HAL 3rd Stage, Bangalore - 560 075, India  
Phone: +91-80-4058-1300  
Fax: +91-80-4058-1301

## • P. R. China (Shanghai)

### Anritsu (China) Co., Ltd.

Room 1715, Tower A CITY CENTER of Shanghai,  
No. 100 Zunyi Road Chang Ning District,  
Shanghai 200051, P.R. China  
Phone: +86-21-6237-0898  
Fax: +86-21-6237-0899

## • P. R. China (Hong Kong)

### Anritsu Company Ltd.

Unit 1006-7, 10/F., Greenfield Tower, Concordia Plaza,  
No. 1 Science Museum Road, Tsim Sha Tsui East,  
Kowloon, Hong Kong, P. R. China  
Phone: +852-2301-4980  
Fax: +852-2301-3545

## • Japan

### Anritsu Corporation

8-5, Tamura-cho, Atsugi-shi,  
Kanagawa, 243-0016 Japan  
Phone: +81-46-296-1221  
Fax: +81-46-296-1238

## • Korea

### Anritsu Corporation, Ltd.

502, 5FL H-Square N B/D, 681,  
Sampyeong-dong, Bundang-gu, Seongnam-si,  
Gyeonggi-do, 463-400 Korea  
Phone: +82-31-696-7750  
Fax: +82-31-696-7751

## • Australia

### Anritsu Pty Ltd.

Unit 21/270 Ferntree Gully Road,  
Notting Hill, Victoria 3168, Australia  
Phone: +61-3-9558-8177  
Fax: +61-3-9558-8255

## • Taiwan

### Anritsu Company Inc.

7F, No. 316, Sec. 1, Neihu Rd., Taipei 114, Taiwan  
Phone: +886-2-8751-1816  
Fax: +886-2-8751-1817



The Master Users Group is an organization dedicated to providing training, technical support, networking opportunities and links to Master product development teams. As a member you will receive the Inside Quarterly Newsletter with user stories, measurement tips, new product news and more.

Visit us to register today: [www.anritsu.com/MUG](http://www.anritsu.com/MUG)



To receive a quote to purchase a product or order accessories visit our online ordering site: [www.ShopAnritsu.com](http://www.ShopAnritsu.com)

## Training at Anritsu

Anritsu has designed courses to help you stay up to date with technologies important to your job.

For available training courses visit: [www.anritsu.com/training](http://www.anritsu.com/training)



Anritsu prints on recycled paper with vegetable soybean oil ink.

Please Contact:



© Anritsu All trademarks are registered trademarks of their respective companies. Data subject to change without notice.  
For the most recent specifications visit: [www.anritsu.com](http://www.anritsu.com)

MW82xxA PIM Master PB  
©2012 Anritsu Company, USA  
All Rights Reserved.



11410-00546



F