

S153 v2 Fusion Splicers

Hand-Held Active Alignment Fusion Splicer

NEW



eFriendly

The FITEL[®] S152 Version 2 Fusion Splicer is an obvious choice for low cost field splicing equipment. The Active V-Groove Technology used on the S152 v2 Fusion Splicer delivers low loss splices while helping to eliminate common Fixed V-groove splicing errors. By combining speed, precision, durability and portability in one unit, the S152 v2 Fusion Splicer ushers in an entirely new range of applications for active alignment splicing.

The S152A v2 Fusion Splicer canopy design, durable metal body frame and rubber protection corners provide robust protection, enabling use in demanding environments without compromising splicer performance. The S152A v2 Fusion Splicer is water resistant to IPX2 and dust resistant to IP5X. The battery is automatically charged internally when connected to AC power even during operation. The new illumination lamp lights up a wide area around the V-grooves and helps with operation in low light environments.

Equipped with a new alignment system that can save up to 20% on splicing time, the S152 v2 Splicer's improved heating mechanism can also reduce protection sleeve shrink time by more than 30%. In addition, an incorporated USB 2.0 interface speeds PC communication and image/video transfer, while enhancing reliability.

While the S152 v2 Fusion Splicer is fast and durable, it continues the FITEL tradition of quality and excellence by delivering precise, accurate splices even under rigorous conditions in the field.

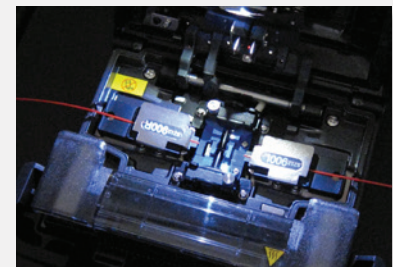
The S152 v2 Fusion Splicer is your logical choice for a wide range of uses including FTTX, LAN, backbone, enterprise, long-haul installations, data-center and/or OEM applications. It is also an excellent option for use in the conventional telecommunications industry, along with other industries (including oil and gas).

Key Features

- **Active V-groove design** is well lit and helps to eliminate common fixed v-groove splicing errors
- **Rugged and compact hand held design** for demanding environmental conditions
- **Internal battery charging** while connected to AC supply
- **Fast splice** (9 sec) with low loss and **fast heating** (25 sec)¹
- **200 cycles** (splicing & heating) with FITEL series battery configuration²

¹ By using semi-auto mode for splicing and pre-heating mode for heating

² By using 2-batteries, semi-auto mode for splicing and regular mode for heating



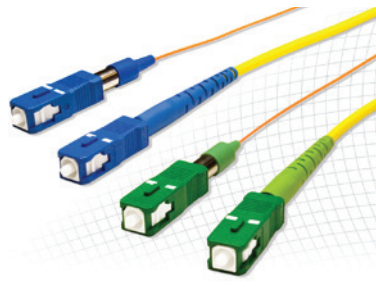
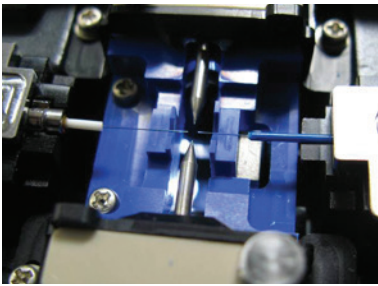
Bound to Innovate

- **Available for All METRO/LAN/FTTX fibers** including ultra bend-insensitive fibers (e.g. EZ-Bend® Fiber)
- **Splicer is compatible with the Seikoh Giken³ and Diamond⁴ Splice-on-connector (SOC)**
- **Easy maintenance** – Toolless electrode replacement and mirror free alignment system
- **Easy Software upgrade** via the Internet
- **Improved GUI** enhancing ease-of-use
- **Red/Green screen icon** for simplified splice results indication as part of new enhancements to the GUI
- **Easily exchanged fiber holder systems** (tight holder/fiber holder/SOC holder)
- **Simplified program fusion and heater programming**
- **PC interface software** provides for user management of splicing programs and results
- **Auto-start** shrink sleeve oven feature
- **Auto-start** splicing
- **Large memory** for storing data (2,000 splice data) and image (100 images)
- **RoHS compliant**

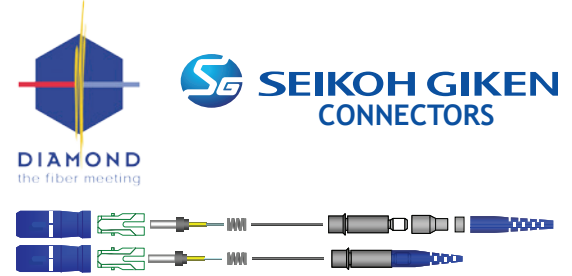
³ Seikoh Giken is a registered trademark of SEIKOH GIKEN CO., LTD

⁴ Diamond is a registered trademark of Diamond SA

Compatible with Splice-on-Connectors



FITEL Splicer SOC partners



Under Tough Environments



Drop Resistant



Water Resistant



Dust Resistant

The S152A v2 Fusion Splicer passed testing based on criteria below ⁵ :

- **Drop resistant** – 76 cm drops from 5 different angles
- **Water resistant** – IPX2 rating drip proof ⁶
- **Dust resistant** – IP5X rating dust proof ⁷

⁵ Above tests were performed at Furukawa Electric Co. Labs, and do not guarantee that the machine will be undamaged under these conditions

⁶ IPX2 rating drip proof means that the machine can be exposed to 3 mm/min drip from 4 different angles with 15° tilt for 2.5 min each and still functions

⁷ IP5X rating dust proof means that the machine can be exposed to dust particles with a diameter of 0.1 to 25 µm for 8 hours and still functions

SPECIFICATIONS

Applicable Fibers	SM (ITU-T G.652), MM (ITU-T G.651), DSF (ITU-T G.653), NZD (ITU-T G.655), BIF/UBIF (Bend insensitive fiber, ITU-T G.657)
Cladding Diameter	80 ~ 150 μm
Coating Diameter	160 ~ 900 μm
Fibers Cleave Length	5 ~ 16 mm
Typical Splice Loss	SM: 0.04 dB, MM: 0.02 dB, DSF: 0.06 dB, NZD: 0.06 dB
Splice Time	9 seconds (semi-auto mode), 11 seconds (regular mode)
Heat Time	25 seconds (S922: 40 mm Sleeve, S921: 60 mm Sleeve) (Pre-heat mode) 31 seconds (S922: 40 mm Sleeve, S921: 60 mm Sleeve) (regular mode)
Splice Programs	Up to 150
Heat Programs	Up to 18
Automatic Heating Start	Available
Applicable Sleeves	20/40/60 mm
Fiber Holding	Tight holder (Loose tube applicable) or Fiber Holder System
Tension Test	1.96 N
Fiber Image Magnification	76X, 235X
Splice Memory	Max. 2,000
Image capture Capacity	Last 100 images to be automatically captured + Up to 24 images to be stored permanently
Dimension	127W \times 199D \times 105H mm (not including shock absorber) 159W \times 231D \times 130H mm (including shock absorber)
Weight	1.7 kg (without battery), 2.1 kg (with two batteries)
Monitor	3.5" color LCD monitor
Data Output	USB ver. 2.0 mini
Displaying Language	20 languages (e.g. English, Spanish, Japanese, Chinese)
Battery Capacity	Typical 80 splice/heat cycles with single battery ⁸ Typical 200 splice/heat cycles with 2 batteries ⁹
Altitude	5,000 m
Operating Temperature	-10° to +50° C (without excessive humidity)
Storage Temperature	-40° to +60° C (without excessive humidity)
Power Source	AC Input 100 to 240 V (50/60 Hz), DC Input 11 to 17 V

⁸ The number of the splicing and heating cycles the machine can produce using a fully charged brand new battery at room temperature of 20 °C, semi-auto mode for splicing and regular mode for heating. Depending upon the condition of the batteries and operation environment, the number can vary.

⁹ The number of the splicing and heating the machine can produce using 2 fully charged brand new batteries at room temperature of 20 °C. Depending on the condition of the batteries and operation environment, the number can vary.

STANDARD PACKAGE

Item	P/N	Quantity
① S152A v2 Main Body	S153-A-A-0001	1
② Hard Carrying Case	HCC-01	1
③ Battery Pack Depending on the package	S943B	0, 1 or 2
④ Spare Electrodes	S969	1 pair
⑤ AC Adaptor for S152A v2	S976A	1
⑥ AC Cable Cord For S976A/S977A	—	1
⑦ Electrode Sharpener	D5111	1
⑧ Cleaning Brush	VGC-01	1
User Manual	FTS - 351	1





ofs

A Furukawa Company

OPTIONAL COMPONENTS

Item	P/N	Quantity
① Soft Carrying Case	SCC-01	1
② Battery Charger	S958C	1
③ AC Adaptor for S958C	S977A	1
④ Cooling Tray	CTX-01	1
⑤ Angled Stand	AGS-01	1
⑥ Working Belt	WBT-01	1
⑦ USB Cable	USB-01	1
⑧ Car Cigarette Cable	CDC-01	1
⑨ Tripod Adaptor	TPA-01	1
⑩ Tight Holder		
16 mm Cleave length	S712T-016	1 pair
10 mm Cleave length	S712T-010	1 pair
⑪ Fiber Holder		
160 μm coated fiber	S712S-160	1 pair
250 μm coated fiber	S712S-250	1 pair
500 μm coated fiber	S712S-500	1 pair
900 μm coated fiber	S712S-900	1 pair
Loose Tube Fiber (left side)	S712S-LT-L	1 pair
Loose Tube Fiber (right side)	S712S-LT-L	1 pair
⑫ SOC Holders		
<For Ferrule>		
Seiko Giken FC/SC connector (9 mm)	S712C-SGS9-L	1
Seiko Giken FC/SC connector (5 mm)	S712C-SGS5-L	1
Seiko Giken LC connector (9 mm)	S712C-SGL9-L	1
Seiko Giken LC connector (5 mm)	S712C-SGL5-L	1
Diamond E-2000/F-3000 connector	S712C-DM25-L	1
<For Cordage>		
Seiko Giken Cordage (5 mm)	S712C-SGC5-R	1
Seiko Giken Cordage (9 mm)	S712C-SGC9-R	1
Diamond Cordage (5 mm)	S712C-DMC5-R	1
<Tool>		
Diamond Mount	WTX-01	1
Smart Fuse		
Software Interface for Machine	SF-01	1



⑤ Angled Stand in Action



⑥ Working Belt in Action



⑥ Working Belt as Shoulder Pack

Ordering Number Form

Code Syntax: S153A-X-Y-V2

Category	Code	Description
X Fiber Holder Type	1	16 mm Tight Holder S712T-016
	2	10 mm Tight Holder S712T-010
	3	Fiber Holder System
Y Number of Battery Packs (S943)	0	Without battery pack
	1*	1 pack
	2*	2 packs

* With 1 S958 battery charger and 1 S977 AC adapter

Contact Us:

Fusion Splicer Customer Service, Training and Service Center

Toll Free: 866-452-9516
 Phone: 678-783-1090
 Fax: 678-783-1093
 Email: splicers@ofsoptics.com

OFS Corporate Headquarters

2000 Northeast Expressway
 Norcross, Georgia 30071, USA
 Toll Free: 888-Fiber-Help
 Intl. Phone: 770-798-5555
 Email: ofs@ofsoptics.com

For additional information please contact your sales representative. You can also visit our website at:

<http://www.ofsoptics.com>

OFS reserves the right to make changes to the prices and product(s) described in this document at any time without notice.

EZ-Bend is a registered trademark of OFS Fitel, LLC.
 "Bound to Innovate" is a registered trademark of FEC.
 FITEL is a registered trademark of Furukawa Denki Kogyo Kabushiki Kaisha DBA The Furukawa Electric Co., Ltd Corporation.

This document is for informational purposes only and is not intended to modify or supplement any OFS warranties or specifications relating to any of its products or services.

Copyright © 2013 OFS FITEL, LLC.
All rights reserved, printed in USA.

OFS
 Marketing Communications
 FITEL-S153-0713



Our company has configured the environmental management system at each of our plants worldwide, and acquired ISO 14001 certification.



eFriendly Logo Mark

This logo mark indicates that the products and services satisfy the standards of environmentally friendly products of the Furukawa Electric Group.



Use electronic files, available at:
www.ofsoptics.com - Use less paper.