

Ti20 Thermal Imager

The thermal imager for everyday maintenance and inspection

The Ti20 brings the power diagnostic capabilities of infrared thermal imaging technology within reach of a wider range of industrial applications. The unit is fully radiometric for detailed temperature analysis and tracking of critical components. The included InsideIR software facilitates setting up an inspection route using unique location names, measurement setup data and high / low temperature alarms. These routes can be uploaded to the imager for use as a routing guide.

High performance, designed for industrial use

- 128 x 96 detector provides a clear thermal image with accurate temperature measurements up to 350°C (662 °F)
- Fully radiometric for detailed temperature analysis and tracking of critical components
- Protected against dust and moisture (IP54 rated) to withstand harsh industrial environments
- Provides 3 hours continuous operation per battery charge (2 battery packs included)

Easy to use

- Large color LCD displays uncluttered image with data and routing instructions
- Facilitates one-handed point-, shoot- and image capture operation
- Assists fast inspections with clear on-screen step-by-step routing instructions

Complete solution offering lowest cost of ownership

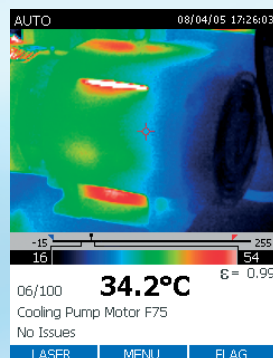
- Includes InsideIR™ software for unlimited use by every member of the maintenance team (no software license fees)
- Comes complete with all necessary accessories and professional application training material to ensure a fast return on investment

Typical applications

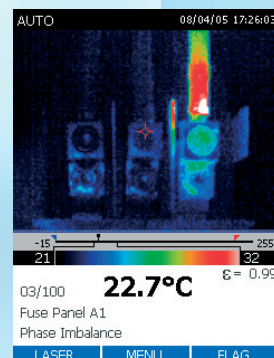
Industrial maintenance – Check whether repairs have been performed successfully.

Predictive maintenance – Identify electrical and mechanical problems before they cause failure.

Process monitoring – Real-time observation to ensure efficient and safe operation.



Cooling pump running at operating temperature.



Temperature difference between phases indicates an unbalanced load.

Specifications

	Fluke Ti20	
Imaging performance	Field of view (FOV)	20° horizontal x 15° vertical
	Spatial resolution (IFOV)	2.73 mrad
	Min focus distance	0.15 m
	Thermal sensitivity (NETD)	≤0.2°C at 30°C
	Image frequency	30 Hz
	Focus	Manual
	Detector type	128 x 96 Focal Plane Array, Uncooled Microbolometer
	Spectral band	7.5 µm to 14 µm
Temperature measurement	Calibrated temperature range	-10°C to 350°C (14 °F to 662 °F)
	Accuracy	±2°C or 2% (whichever is greater)
	Measurement modes	Auto and manual level and span adjustment
	Emissivity correction	0.1 to 1.0 (0.01 increments)
Image presentation	Digital display	3" large color LCD
	LCD backlight	Selectable On/Off
	Palettes	Grayscale, reverse grayscale, rainbow, ironbow
Image and data storage	Storage medium	50 images internal flash
	File formats supported	14 bit measurement data included. Exportable JPEG, BMP, GIF, PNG, TIFF, WMF, EXIF, EMF
Interfaces and software	Interface	USB 2.0 (High speed)
	Software	InsideIR; Full analysis and reporting software included
Laser	Classification	Class II
Controls and adjustments	Set-up controls	Date/time, temperature units C/F, LCD intensity (high/normal/low),
	On-screen Indicators	Battery status, real time clock and center point temperature, range and span indication and high and low alarm settings
Power	Battery type	Rechargeable battery pack
	Battery operating time	3 hours continuous operation
	AC Operation	AC adapter 110/220 VAC, 50/60 Hz
	Power saving	Automatic shutdown and sleep modes (user specified)
Environmental and mechanical design	Operating temperature	0 to +50°C (32 °F to 122 °F)
	Storage temperature	-25 to +70°C (-13 °F to 158 °F)
	Relative humidity	Operating and storage 10% to 95%, non-condensing
	Water and dust resistant	IP54
	Weight (including batteries)	1.2 kg (2.6 lb)
	Camera size (HxWxD)	254 x 102 x 178 mm (10 in x 4 in x 7 in)
Other	Warranty	1 year



Included accessories

- Hard carrying case
- 2 Rechargeable Battery Packs
- Soft-sided carrying case
- Rechargeable battery pack
- AC/DC power adapter
- USB communication cable
- InsideIR reporting and analysis software
- Interactive CD with training materials
- Getting Started Guide

Ordering information

Fluke-Ti20 US Thermal Imager North America

To find out more about Fluke thermal imagers go to www.fluke.com/thermography or in the United States call **1-800-760-4523**.

Fluke. *Keeping your world up and running.™*

Fluke Corporation
PO Box 9090, Everett, WA USA 98206

Fluke Europe B.V.
PO Box 1186, 5602 BD Eindhoven, The Netherlands

For more information call:
In the U.S.A. (800) 443-5853 or Fax (425) 446-5116
In Europe/M-East/Africa +31 (0) 40 2675 200 or Fax +31 (0) 40 2675 222
In Canada (800)-36-FLUKE or Fax (905) 890-6866
From other countries +1 (425) 446-5500 or Fax +1 (425) 446-5116
Web access: <http://www.fluke.com>