

CMA 5000

Multi-Layer Test Solution Order Guide



CMA 5000

Multi-Layer Test Solution Order Guide

NOTES:

¹ The CMA 5000 platform with large bay adapter or dedicated AC power source does not include the AC charger/adapter or Li-Ion battery

² Although there are 6 module bays, only 4 provide electrical contacts

CMA 5000 - Mainframe Order Guide

The CMA 5200 Mainframe is available with a Small (SBA), Medium (MBA) or Large (LBA) Bay Adapter and includes the following¹:

Color display with touch screen, modular CD-ROM drive, operator's manual, support CD, Li-Ion battery (1), AC charger/adapter, 10/100 MB Ethernet Port, USB (2), PC card (PCMCIA) slots (2), large capacity hard drive, 256 MB RAM and choice of AC line cord.

5000-____-____-0-____-____
A B C D

A = Select Bay Adapter

- 1 = 2-slot Small Bay Adapter
- 2 = 4-slot Mid Bay Adapter
- 3 = 6-slot Large Bay Adapter²

C = Select Power Source

- DC = Battery with AC Charger (SBA or MBA only)
- AC = Dedicated AC Power Only
- DC24 = +24V DC Power (LBA only)
- DC48 = -48V DC Power (LBA only)

B = Select Drive/Desktop Option

- 0 = CD-Read Only (SBA only)
- 5 = CD-Read/Write, Windows Desktop

D = Select Line Cord Option

- US = United States
- EU = Europe
- SW = Switzerland
- AU = Australia
- UK = United Kingdom
- IT = Italy



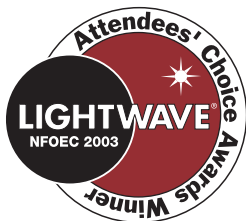
Small Bay Adapter (SBA)



Mid Bay Adapter (MBA)



Large Bay Adapter (LBA)



Example of order number and specifications

5000-100-DC-US	Controller with a Small Bay Adapter, Standard Color Display, CD-R (Read only), Battery Powered, AC/DC, US line cord
5000-250-DC-EU	Controller with a 4-slot Mid Bay Adapter, Standard Color Display, CD-RW (Read/Write), Windows Desktop, Battery Powered, AC/DC, European line cord



NOTES:

¹ Must be added as a separate line item

² Does not include controller

Optical Accessories ¹	
Option-501CD-RW	CMA 5000 CD/read/write module upgrade (requires desktop option)
Option-502FLOPPY	CMA 5000 floppy drive module
Option-503DESKTOP	CMA 5000 Windows® desktop upgrade (adds desktop option to units without)
Option-505MAN	CMA 5000 Replacement platform user's guide
Option-506KEYUS	CMA 5000 US keyboard with trackball
Option-507KEYUS	CMA 5000 US keyboard
Option-508SBA ²	Small bay adapter (includes DC power module and 1 battery)
Option-509MBA ²	Medium bay adapter (includes DC power module and 1 battery)
Option-510BATT	Replacement Li-Ion battery
Option-511AC	Replacement AC charger/adaptor
Option-513ACPOWER	AC power module for application configurations with high power requirements
Option-515PRINT	CMA 5000 portable external printer with cable and case
Option-520HCASE	CMA 5000 SBA hard transit case
Option-521HCASEML	CMA 5000 MBA hard transit case
Option-522SCASE	Soft bag, CMA 5000 SBA/MBA
Option-524DXHCASE	Deluxe SBA/MBA hard case with high module capacity
Option-526TRIPOD	Mounting tripod for CMA 5000 SBA
Option-528HCASEL	CMA 5000 LBA hard transit case
Option-530BLANK	Single slot blank filler module
Option-540TFC	45 dB/1550 nm Fiber Optic Talk Set Module - FC Connector
Option-540TSC	45 dB/1550 nm Fiber Optic Talk Set Module - SC Connector
Option-540TST	45 dB/1550 nm Fiber Optic Talk Set Module - ST Connector
Option-541TFC	OPTION-540TFC talk set module plus OPTION-542TFC stand-alone
Option-541TSC	OPTION-540TSC talk set module plus OPTION-542TSC stand-alone
Option-541TST	OPTION-540TST talk set module plus OPTION-542TST stand-alone
Option-542TFC	Stand-alone 45 dB/1550 nm talk set for use with OPTION-540TFC
Option-542TSC	Stand-alone 45 dB/1550 nm talk set for use with OPTION-540TSC
Option-542TST	Stand-alone 45 dB/1550 nm talk set for use with OPTION-540TST
Option-543T	Spare headset for option 540
Option-545VIP	USB Video Inspection Probe
Option-546VIPA	USB Video Inspection Probe - Advanced analysis option
Option-550TFMFC	Test Fiber Module SM 1.1km - FC Connector
Option-550TFMSC	Test Fiber Module SM 1.1km - SC Connector
Option-550TFMST	Test Fiber Module SM 1.1km - ST Connector
Option-551TFMFC	Test Fiber Module 62.5MM 300 m - FC Connector
Option-551TFMSC	Test Fiber Module 62.5MM 300 m - SC Connector
Option-551TFMST	Test Fiber Module 62.5MM 300 m - ST Connector
Option-552TFMFC	Test Fiber Module 50MM 300 m - FC Connector
Option-552TFMSC	Test Fiber Module 50MM 300 m - SC Connector
Option-552TFMST	Test Fiber Module 50MM 300 m - ST Connector
Option-591EXT1	CMA 5000 1 Year extended warranty
Option-592EXT2	CMA 5000 2 Year extended warranty
Options for use with Windows Desktop Option only	
Option-580DATA	USB data transfer kit, includes software and cable for Windows® 98/2000/XP

Legend

- Go**
Available power option

- Caution**
Power configuration not supported when this module is used in conjunction with other modules listed

- Stop**
Not supported with this power configuration

- N/A**
Module will not physically fit in selected bay adapter

Note

When using multiple modules, you must review all module technologies to confirm operability.

CMA 5000 Power Configuration Table for SBA			
Module Technology	Battery	AC Charger Adapter	AC Power Module
OTDR			
CD/OTDR			
OTA			
OTA w/Jitter & Wander			
OSA			
PMD			
Gig-E			
Fibre Channel			
CD Phase			

CMA 5000 Power Configuration Table for MBA			
Module Technology	Battery	AC Charger Adapter	AC Power Module
OTDR			
CD/OTDR			
OTA			
OTA w/Jitter & Wander		Any Other Module	Second OTA Gig E Fibre Channel
OSA			
PMD			
Gig-E	Any Other Module	OTA	OTA
Fibre Channel	Gig E or OTA		OTA
CD Phase			

CMA 5000 Power Configuration Table for LBA			
Module Technology	AC	-48 VDC	+24 VDC
OTDR			
CD/OTDR			
OTA			
OTA w/Jitter & Wander			
OSA			
PMD			
Gig-E			
Fibre Channel			
CD Phase			

CMA 5000

OTDR Order Guide



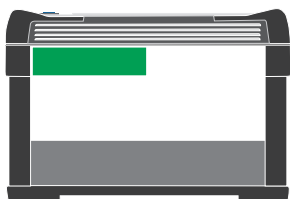
This module requires the following open slots:



SBA



MBA



LBA

CMA 5000 - OTDR Module Order Guide

The CMA 5200 OTDR's are Single Bay modules that include one OTDR/Source Universal Adapter (UC-130-XX) at no charge. For units with a Power Meter option, a Meter Connector Adapter (AM-430-XX) is also included at no charge.

52_____ - _____ - OTDR - _____
A **B** **C**

A = Select an OTDR Module

- 25 = Single-mode, 37/36 dB dynamic range, dual-wavelength 1310/1550 nm
- 35 = Single-mode, 40/40 dB dynamic range, dual-wavelength 1310/1550 nm
- 36 = Single-mode, 40/40/40 dB dynamic range, tri-wavelength 1310/1550/1625 nm
- 45 = Single-mode, 43/45 dB dynamic range, dual-wavelength 1310/1550 nm
- 46 = Single-mode, 43/45/43 dB dynamic range, tri-wavelength 1310/1550/1625 nm
- 54 = Single-mode, 50 dB dynamic range, single-wavelength 1550 nm
- 66 = Multimode 24/26 dB dynamic range, dual-wavelength 850/1300 nm, 62.5 μ m
- 69 = Multimode 24/26 dB dynamic range, dual-wavelength 850/1300 nm, 50 μ m

B = Select Meter, Light Source and VFL Options

- 000 = No Meter, Light Source or VFL
- 110 = +10 dBm Meter and Light Source
- 210 = +20 dBm Meter and Light Source
- 001 = VFL Only
- 111 = +10 dBm Meter and Light Source and VFL
- 211 = +20 dBm Meter and Light Source and VFL

C = Select Connector

- | | | |
|--------------|--------------|--------------|
| UFC = FC/UPC | AFC = FC/APC | USC = SC/UPC |
| ASC = SC/APC | UST = ST/UPC | AST = ST/APC |

Example of order number and specifications

5236-110-OTDR-AFC	Single-mode, 40/40/40 dB dynamic range, tri-wavelength 1310/1550/1625 nm, Meter and Light Source with FC/APC connector
5266-001-OTDR-UFC	Multimode 24/26 dB dynamic range, dual-wavelength 850/1300 nm, 62.5 μ m, VFL, with FC/UPC connector

CMA 5000

OTA Order Guide



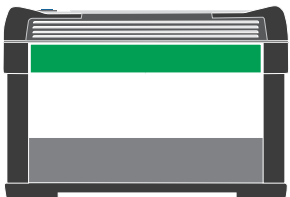
This module requires the following open slots:



SBA



MBA



LBA

CMA 5000 - OTA Module Order Guide

The CMA 5600 OTA module is a double (2-bay) module and can be used in either an SBA, MBA or LBA. Select base module and additional testing options below.

56 ____ - 000 - OTA

A

A = Select Base OTA Module

13 = 10G-1310 nm module

15 = 10G-1550 nm module

22 = 622MB module for OC3/12 and STM1/4

25 = 2.5G -1310/1550 nm module

CMA 5000 OTA Software Options

Must also order a 56XX-000-OTA base module.

56 ____ - ____ - OTA

A

B

A = Select an OTA Module (must match base module)

13 = 10G-1310 nm module

15 = 10G-1550 nm module

22 = 622MB module for OC3/12 and STM1/4

25 = 2.5G -1310/1550 nm module

B = Select Additional Options

100 = Concatenation software

200 = Tandem connection monitoring

300 = Jitter and wander (Tx and Rx) (5622 and 5625 only)

350 = Jitter and wander (Tx only) (5622 and 5625 only)

400 = ATM option

Example of order number and specifications

5625-000-OTA

CMA 5000 OTA 2.5G module

5625-300-OTA

Jitter and wander option for 2.5G module

CMA 5000

OSA Order Guide



This module requires the following open slots:



SBA



MBA



LBA

CMA 5000 - OSA Diffraction Grating Module Order Guide

The CMA 5501 is a double-deep (4-Bay) module that must be used with a MBA or LBA. Each module includes: Choice of FC or SC, Ultra or Angled connector style.

5510 - - OSA -
 A B

A = Select OSA module

- 000 = OSA
- 100 = OSA with channel select

B = Select Connector

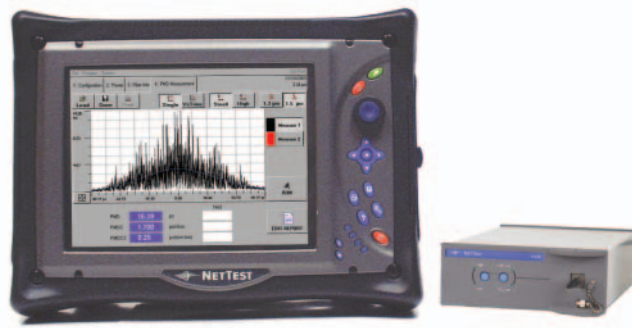
- 1 = Ultra FC Single-mode
- 2 = Ultra SC Single-mode
- 3 = Angled FC Single-mode
- 4 = Angled SC Single-mode

Example of order number and specification

5501-100-OSA-2	OSA diffraction grating double-deep module with channel selection option with Ultra SC connector.
----------------	---

CMA 5000

Polarization Mode Dispersion Order Guide



This module requires the following open slots:



SBA



MBA



LBA

CMA 5000 - PMD Module and Light Source Order Guide

The CMA 5400 PMD Module is a double-deep (4-Bay) module that must be used with an MBA or LBA. Standard connector type is FC/PC. Select base module plus light source option below.

540__ - 000-PMD
A

A = Select PMD Module

0 = Base PMD Module, Double-Deep

CMA 5000 PMD Light Source Options

Must also order a base 540X-000-PMD module.

5401 - __ __ __ - PMD
A

A = Select Light Source Option

001 = Standard dynamic range, 1310/1550 nm

010 = High dynamic range, 1550 nm

Example of order number and specifications

5400-000-PMD	Base PMD double deep module
5401-010-PMD	PMD light source with high dynamic range, 1550 nm

CMA 5000

Gigabit Ethernet Order Guide



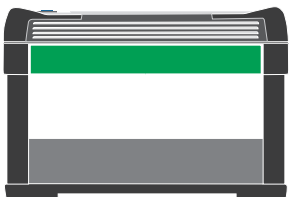
This module requires the following open slots:



SBA



MBA



LBA

CMA 5000 - Gigabit Ethernet Module Order Guide

The CMA 5700 is a double (2) bay module and can be used in either an SBA, MBA or LBA. It features 2 ports for SX, LX or 1550 nm GBIC interfaces for 1000 Mbps optical ethernet testing and 2 ports for RJ45 interfaces for 10/100/1000 Mbps electrical ethernet testing. The GBIC transceiver of choice must be ordered separately.

5700-__ __ __-GIGE
A

A = Select a GIGE Module

- 000 = GIGE module
- 001 = GIGE module with channel stats

CMA 5000 Gigabit Ethernet GBIC Options

Must also order a 5700-XXX-GIGE base module

5700-__ __ __-GIGE
A

A = Select a GIGE Module

- 085 = 850 nm GBIC GigE Transceiver
- 013 = 1300 nm GBIC GigE Transceiver
- 015 = 1550 nm GBIC GigE Transceiver

Optional Accessory

5700-CS-OPT = Channel Statistics Upgrade for existing 5700-000-GIGE module

Example of order number and specification

5700-000-GIGE	Module with 2 ports for optical ethernet testing and 2 ports for electrical ethernet testing
5700-085-GIGE	850 nm GBIC GigE Transceiver

CMA 5000

Fibre Channel Order Guide



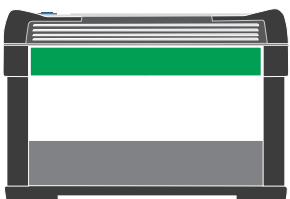
This module requires the following open slots:



SBA



MBA



LBA

CMA 5000 - Fibre Channel Module Order Guide

The CMA 5750 is a double (2) bay module and can be used in either an SBA, MBA or LBA. The SFP transceiver of choice must be ordered separately.

5750-__ __ __-FICH
A

A = Select a FICH Module

000 = Base Fibre Channel Module

CMA 5000 Fibre Channel SFP Option

Must also order 5750-XXX-FICH base module

5750-__ __ __-FICH
A

A = Select a FICH Module

285 = 850 nm SFP 1-2 Gb ps

213 = 1300 nm SFP 1-2 Gb ps

Example of order number and specification

5750-000-FICH	Base Fibre Channel Module
5750-213-FICH	Module with 1300 nm SFP transceiver 1-2 Gb

CMA 5000

Chromatic Dispersion Order Guide



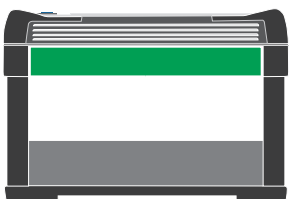
This module requires the following open slots:



SBA



MBA



LBA

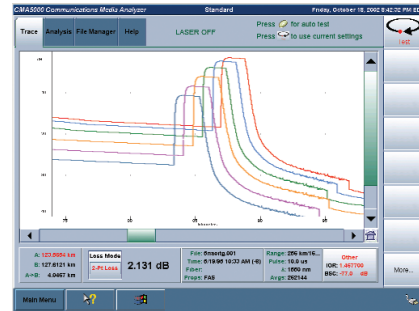
CMA 5000 - Chromatic Dispersion Module Order Guide

The CMA 5301 Phase Shift CD unit consists of a double (2) bay module receiver that can be used in either an SBA, MBA or LBA. It features a stand-alone transmitter with FC connector that tests and communicates over a single fiber.

5301-500-CDPHSE 1550/1625 nm chromatic dispersion module with stand-alone transmitter

CMA 5000

OTDR/Chromatic Dispersion Order Guide



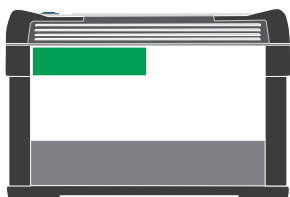
This module requires the following open slots:



SBA



MBA



LBA

CMA 5000 - OTDR Based Chromatic Dispersion Module Order Guide

The CMA 5302 OTDR based Chromatic Dispersion unit is a single bay module that can be used in either an SBA, MBA or LBA. It features time of flight CD measurements as well as traditional tri-wavelength OTDR testing.

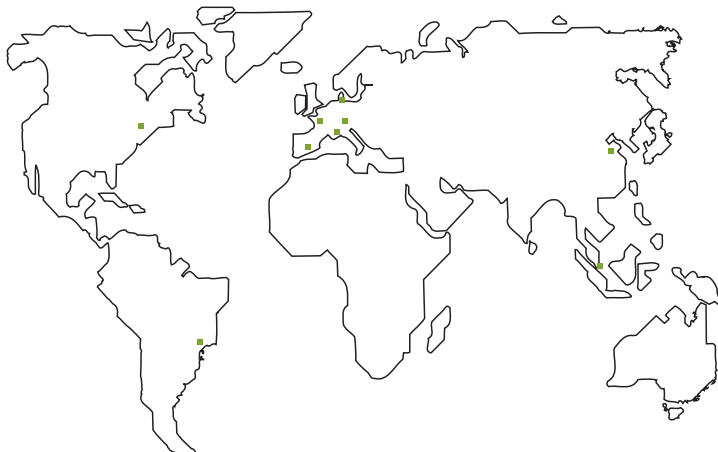
5302-____-CDOTDR-____
A **B**

A = Select a Meter and Light Source Options

- 110 = +10 dBm Meter and Light Source
- 210 = +20 dBm Meter and Light Source

B = Connector

- 1 = Ultra PC
- 2 = Angled PC



NetTest Sales Offices

Brazil

NetTest (Brazil) Ltda.
 Av. Luis Carlos Berrini, 1297
 7th Floor - Brooklin
 Sao Paulo - SP 04571-010
 Brazil
 Tel: +55 11 5505-6688
 Fax: +55 11 5505-1090
 E-mail: vendas@nettest.com

China

NetTest (China) Ltd.
 Room 1561, Jingan Center
 No. 8 East Beisanhuan Road
 100028 Beijing
 P.R. of China
 Tel: +86 10 6467 9888
 Fax: +86 10 6464 4711
 E-mail: helpdesk@nettest.com

Denmark

NetTest A/S
 Kirkebjerg Allé 90
 DK-2605 Brøndby
 Denmark
 Tel: +45 72 11 22 00
 Fax: +45 72 11 22 50
 E-mail: com@nettest.com

France

NetTest SAS
 45 Avenue Jean Jaurès
 BP 81
 78344 Les Clayes sous Bois
 France
 Tel: +01 61 34 97 58
 Fax: +01 61 34 97 97
 E-Mail: sales.france@nettest.com

Germany

NetTest GmbH
 Martin-Kollar-Str. 13
 D-81829 München
 Germany
 Tel: +49 89 99 89 01-0
 Fax: +49 89 99 89 01 40
 E-mail: info-germany@nettest.com

Italy

NetTest S.p.A.
 Via Sante Bargellini 4
 00157 Roma
 Italy
 Tel: +39 06 43 36 24 00
 Fax: +39 06 43 36 24 25
 E-mail: sales_italy@nettest.com

Singapore

NetTest Pte Ltd
 371 Beach Road
 Keypoint, #06-01/03
 Singapore 199597
 Tel: +65 6220 9575
 Fax: +65 6225 7612
 E-mail: marketing-apac@nettest.com

Spain

NetTest (España) S.A.
 Centro Empresarial El Plantio
 Ochandiano, 8-EI Plantio
 E-28023 Madrid
 Spain
 Tel: +34 91 372 92 27
 Fax: +34 91 372 97 21
 E-mail: info.spain@nettest.com

USA

NetTest North America Inc.
 Center Green, Building 4
 6 Rhoads Drive
 Utica, NY 13502
 USA
 Toll Free: 1 800 443 6154
 Tel: +1 315 266 5000
 Fax: +1 315 798 4038
 E-mail: info@nettest.com



NetTest North America Inc.

Center Green, Building 4
 6 Rhoads Drive
 Utica, NY 13502 USA
 Toll Free: 1 800 443 6154
 Tel: +1 315 266 5000
 Fax: +1 315 798 4038
 E-mail: info@nettest.com
 Web: www.nettest.com

NetTest, the pioneer in multi-layer network testing, is a global provider of test and measurement systems, instruments and components for all types of networks and all stages of network development and operation. Our solutions offer leaders in optical, wireless and fixed networking vital insights into network performance, enabling informed business decisions that drive profitability.