

Model 275 HART® Communicator Interface



- Retain up-to-date records of installed field devices.
- Improve productivity.
- Increase field device maintenance effectiveness.

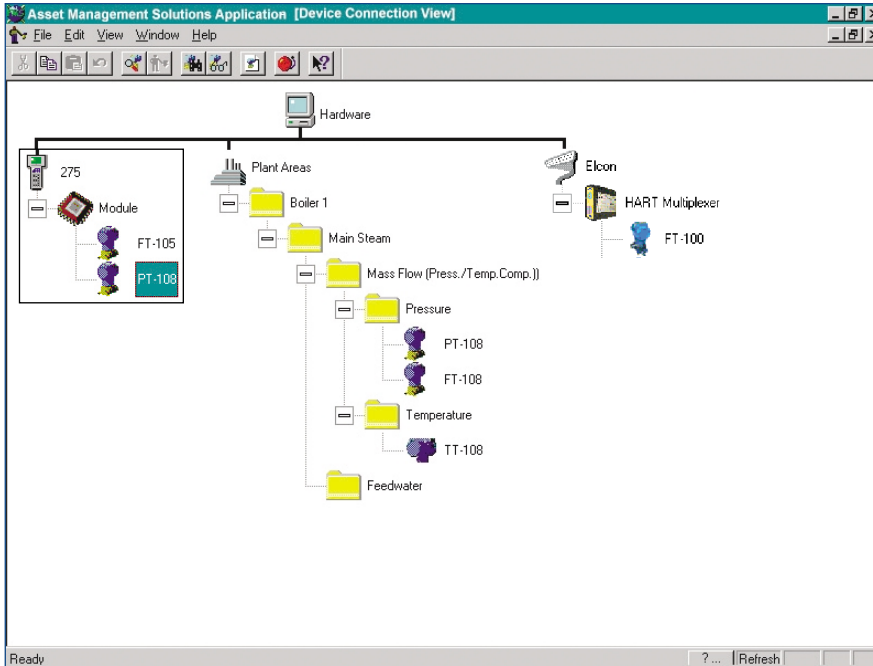


The Model 275 HART® Communicator Interface enables easy upload and download of field device information between your Model 275 HART Communicator and your AMS system.

Introduction

The 275 HART® Communicator Interface application is an Asset Management Solutions (AMS) software option. The Model 275 HART Communicator Interface software enables you to upload and download device configuration information between the 275 HART Communicator and your AMS database.

With the 275 HART Communicator Interface software, you can take advantage of all of the features of the AMS application—including simple drag-and-drop transfer of configurations between AMS and the 275 HART Communicator. Using the familiar tools of Microsoft Windows, this option is easy to learn and easy to use.



The Model 275 HART® Communicator Interface brings the field to the office.

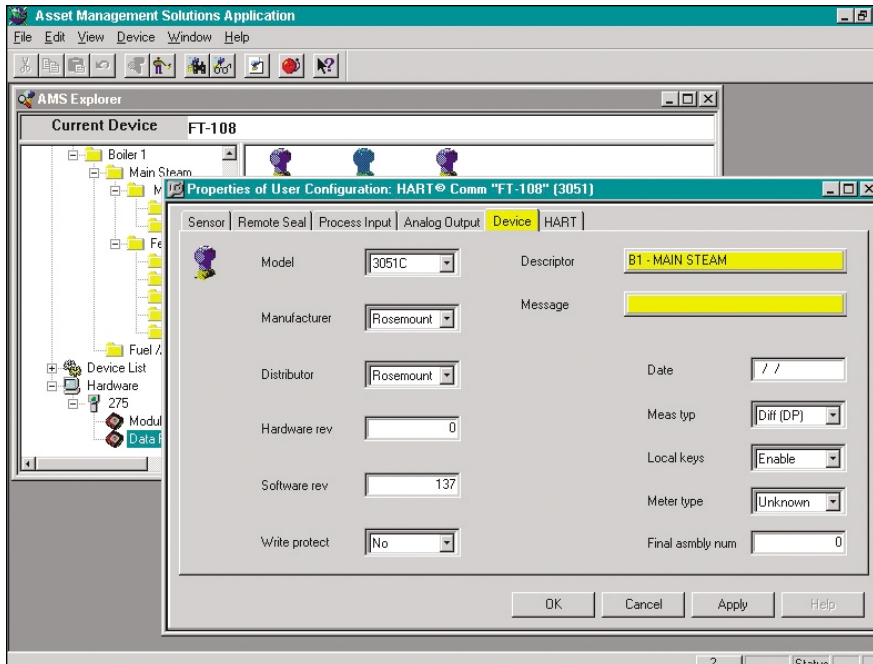
Benefits

Retain up-to-date records of installed field devices. With the ability to upload device information from the 275 HART Communicator to AMS, you gain complete control over your field device information. Accurate records of device configurations can be invaluable in showing your compliance to regulatory requirements. Information from your 275 HART Communicator can be stored in your AMS database for ready access to date and time-stamped field device information.

Improve productivity with the easy drag-and-drop upload and download of field device information. Field maintenance is now easier. AMS revolutionizes how you manage your HART data. The 275 HART Communicator can be connected to the PC with a serial PC cable and a Model 275 Communication Adapter. Configuration changes done in AMS are easily downloaded to the 275 HART Communicator by simply dragging and dropping the configurations onto the 275 icon on the screen. Once the configurations are downloaded from AMS to the 275 HART Communicator, you are ready to go to the field to download new configurations to the field devices. With a complete field

device database available, maintenance scheduling becomes faster and easier too. Configuration changes can be performed in advance so that maintenance activities can be done more effectively and proactively.

Increase field device maintenance effectiveness by reconciling information from the 275 HART Communicator to the database. Once a configuration change has been made to a field device, the change is quickly and easily uploaded to AMS. The user can then review the changes to the device configuration and store them to the database. An Audit Trail record of the field change is automatically created.



The Model 275 HART® Communicator Interface lets you update your AMS database to maintain up-to-date records of field device configurations.

Specifications

- AMS with the Model 275 HART Communicator Interface Option
- Audit Trail Option (Recommended)
- Model 275 HART Communicator with minimum module revision of 3.6 or higher
- Microsoft Windows NT Version 4.0 or Windows 2000
- PC for AMS software
- Data Pack (Recommended)

275 Interface Kit

The 275 Interface Kit includes:

- Model 275 HART Communicator Interface Option software
- Communication Adapter
- Shielded serial PC Cable

Visit our AMS website:
www.assetweb.com

Emerson Process Management

AMS

12001 Technology Drive
Eden Prairie, MN 55344 USA
T 1(512) 832-3235
F 1(952) 828-3033
www.assetweb.com

The contents of this publication are presented for informational purposes only, and while every effort has been made to ensure their accuracy, they are not to be construed as warranties or guarantees, express or implied, regarding the products or services described herein or their use or applicability. All sales are governed by our terms and conditions, which are available on request. We reserve the right to modify or improve the designs or specifications of our products at any time without notice.

All rights reserved. PlantWeb® and SNAP-ON are marks of one of the Emerson Process Management group of companies. The Emerson logo is a trademark and service mark of Emerson Electric Company. All other marks are the property of their respective owners.

