



EXFO

FOT-90A

Power Meter

Years of customer satisfaction

The FOT-90A, one of the most complete fiber-optic power meters available, has received worldwide acceptance by critical users in the fiber-optic industry. The FOT-90A is the result of years of ongoing improvements and research, both based on continued feedback from our customers. In a world where technology seems to change every second, the FOT-90A demonstrates its superiority by providing reliable performance and accurate measurements, year after year.

Automated testing with

Making power measurements at the wrong calibrated wavelength forces technicians to retest fibers, which costs companies a significant amount of money. You can solve this problem with the FOT-90A. When paired with a FasTesT compatible source (FLS-210A and/or FLS-210B), the FOT-90A sets itself to match the source wavelength, thereby greatly decreasing your margin of error. The patented FasTesT system saves you money by reducing testing and training time.

Manual or programmable storage

Permanent memory registers allow you to store up to 512 readings manually for future reference or viewing. For monitoring

 compatible

Extended memory

Optional RS-232 interface

Automatic wavelength selection

**Automatic or manual storage
of readings**

**Detection of 2 kHz signal for fiber
identification**

Large, easy-to-read backlit display

3-Way Powering

applications, the FOT-90A can also store up to 400 readings automatically at a programmable time interval.

Interface capability

If your application requires you to analyze extensive data, the optional RS-232 interface can make your task easier. This option comes with the necessary application software to download data; you can view, export, or print your data in table or graph form. You can also develop your own programs and control the meter from a remote location with the help of the control codes.

2 kHz signal detection

This feature helps you locate fibers carrying a 2 kHz signal and accelerates fiber identification, even through a 3 mm jacket. A special adapter facilitates this operation while ensuring that you don't overbend the fiber.

3-Way Powering

When the rechargeable NiCd batteries run low, intelligent circuitry transfers the power supply over to the replaceable 9 V battery. This allows you to perform measurements for up to 20 hours before having to either plug in the supplied adapter/charger (thereby recharging the NiCd pack) or replace the 9 V battery.

SPECIFICATIONS

Model	FOT-91A	FOT-92A	FOT-92AX	FOT-93A
Detector type	Si (5 mm)	Ge (2 mm)	Ge (2 mm)	InGaAs (2 mm)
Measurement range ^{1,2,3} (dBm)	+3 to -73	+10 to -70	+18 to -60	+3 to -73
Accuracy ⁴ (dB)	±0.20 (5%)	±0.20 (5%)	±0.20 (5%)	±0.20 (5%)
Resolution ¹ (dB)	±0.01	±0.01	±0.01	±0.01
Linearity ⁵ (dB)	±0.02	±0.02	±0.02	±0.02
Calibrated spectral range (nm)	450 to 1050	780 to 1600	780 to 1600	840 to 1650

GENERAL SPECIFICATIONS

Size (H x W x D)	22 x 11 x 5 cm	8 3/4 x 4 1/2 x 2 in.
Weight	unit 0.7 kg	1.5 lb.
	shipping 2.5 kg	5.5 lb.
Temperature	operating -10° to 40°C	14° to 104°F
	storage -30° to 60°C	-22° to 140°F
Power	Built-in NiCd batteries (16 hours of operation) ⁶ , 9 V alkaline battery backup, AC adapter/charger	

STANDARD ACCESSORIES

Instruction manual, carrying case, protective holster, shoulder strap, connector adapter, FOA-01 (2 kHz live fiber detection adapter), alcohol cleaning pads, AC adapter/charger, 9 V alkaline batteries, and Certificate of Calibration

ORDERING INFORMATION

FOT-9XA-X-XX

Detector code

1 = Si
2 = Ge
3 = InGaAs

Optional detector code

X = High-power Ge

Optional interface code

RS = RS-232 cable and application software

Specify model number and the connector adapter you wish to obtain (one free connector adapter included).

FOA-12 = Biconic
FOA-14 = D4: D4, D4/PC
FOA-16 = SMA/905, SMA/906
FOA-22 = FC: FC, FC/(PC/SPC/UPC/APC), NEC-D3
FOA-24 = Radial VFO/DF/(straight/slant)
FOA-26 = Stratos 430, Stratos 830
FOA-28 = DIN 47256 (LSA): DIN 47256/(PC/APC)
FOA-32 = ST: ST, ST/(PC/SPC/UPC)

FOA-34 = Mini-BNC
FOA-40 = Diamond HMS-0, HFS-3 (3.5 mm)
FOA-42 = Radial PFO
FOA-44 = Radial MFO
FOA-46 = Souriau 8016
FOA-48 = HP HFBR-4501 HFBR-4503
FOA-52 = Biconic Bayonet

FOA-54 = SC: SC/(PC/SPC/UPC/APC)
FOA-56 = FDDI⁷
FOA-68 = AT&T Rotary Splice
FOA-76 = FSMA HMS-10/AG, HFS-10/AG
FOA-78 = Radial EC⁷
FOA-80 = ESCON (IBM)
FOA-84 = Diamond HMS-10, HFS-13

CALIBRATION

Calibrated wavelengths vary according to detector type. The following table lists the wavelengths offered with each version of the FOT-90A.

Model	FOT-91A	FOT-92A and FOT-92AX	FOT-93A
Detector type	Si	Ge	InGaAs
Calibrated wavelengths (nm)	450, 620, 630, 650, 660, 670, 750, 770, 780, 800, 810, 820, 830, 840, 850, 860, 900, 910, 980, 1050	780, 820, 840, 850, 860, 910, 980, 1060, 1200, 1280, 1290, 1300, 1310, 1320, 1330, 1530, 1540, 1550, 1560, 1600	840, 850, 860, 910, 980, 1060, 1250, 1280, 1290, 1300, 1310, 1320, 1500, 1520, 1530, 1540, 1550, 1560, 1600, 1650

EXFO is certified ISO 9001 and attests to the quality of its products. These products are accompanied by a 12-month warranty and an excellent after-sales support service.

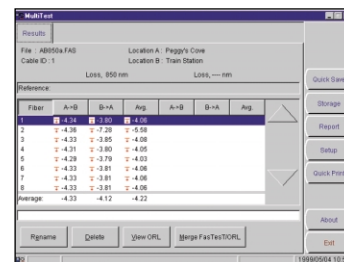
This device complies with Part 15 of the FCC Rules. Operation is subject to the following two conditions: (1) this device may not cause harmful interference, and (2) this device must accept any interference received, including interference that may cause undesired operation.

EXFO has made every effort to ensure that the information contained in this brochure is accurate. However, we accept no responsibility for any errors or omissions, and we reserve the right to modify design, characteristics, and products at any time without obligation.

Contact EXFO for prices and availability or to obtain the phone number of your local EXFO distributor.

Data management

The optional RS-232 interface kit includes application software that lets you visualize, save, export, print, and interpret readings stored manually or acquired over time. Tailor the FOT-90A to your research project!



BELLCORE PRODUCT CODES

Model	CPR#	ECI#	CLEI#
FOT-92A	774054	200628	LGTDJ10AAA

NOTES

- Resolution is a function of input power.
- In FasTest automated mode, signal capturing is 12 dB less than maximum sensitivity.
- Tested at 1300 nm for FOT-92A, FOT-92AX, and FOT-93A. Tested at 850 nm for FOT-91A.
- Calibrated to NIST standards.
- Electrical linearity throughout the range.
- With backlight off.
- A correction factor has to be taken into account with this special adapter.



1 800 663-3936
info@exfo.com
www.exfo.com



CORPORATE HEADQUARTERS 465 Godin Avenue, Vanier QC G1M 3G7 Canada Tel.: (418) 683-0211 Fax: (418) 683-2170

EXFO AMERICA 903 North Bowser, Suite 360, Richardson, TX, 75081, USA Tel.: 1 800 663-EXFO Fax: (972) 907-2297

EXFO EUROPE Centre d'Affaires-Les Metz, 100, rue Albert Calmette, 78353, Jouy-en-Josas, France Tel.: +33 1 34 63 00 20 Fax: +33 1 34 65 90 93