

## 375 Field Communicator

- Universal – HART® and FOUNDATION™ fieldbus
- User upgradeable
- Intrinsically safe
- Rugged and reliable
- Interfaces with AMS



*The 375 Field Communicator is designed to support all HART and all FOUNDATION fieldbus devices from all vendors.*

### Introduction

The 375 Field Communicator is the new standard in handheld communicators. Built on over ten years of experience with the 275 HART Communicator, user requirements drove the features of this next generation communicator.

HART users worldwide told us how to make a better communicator. Fieldbus users said they wanted

a portable intrinsically safe communicator that supports all their fieldbus devices.

The result is the universal, user upgradeable, intrinsically safe, rugged and reliable 375 Field Communicator.



**EMERSON**  
Process Management



*A fold-away stand provides the correct viewing angle on the bench, and flips up to a locked position for secure hanging in the plant.*

## Product Description

Building on the experience with the proven 275 HART Communicator, the 375 Field Communicator includes enhancements designed to simplify your work in the field. We designed the 375 Field Communicator user interface around the 275, leveraging the navigation features users told us they liked. Then we added powerful features including a much larger touch screen, HART Revision 6 support, and the ability to upgrade your 375 Field Communicator onsite using the Internet.

### ■ See the difference.

The 375 Field Communicator runs on Windows CE, a robust, real-time, operating system. The display is 70% larger than that of the 275 HART Communicator and uses transfective technology, making it easy to read in both bright sunlight and in normal lighting. To make sure we covered all conditions, we added a multi-level backlight, allowing the display to be viewed in those areas of your plant with dim light. The touch sensitive display and large physical navigation buttons provide for efficient use both on the bench and in the field.

We made sure that the weight was evenly distributed for comfortable one-handed operation in the field.

### ■ It is loaded!

The 375 Field Communicator has a processor that is 20 times faster than the 275. It features 32MB of application memory, 64 times more than the 275 HART Communicator. The Configuration Expansion Module holds hundreds of device configurations, and it is externally accessible. Enhancements in the battery pack allow a full recharge in 2 hours, 8 times faster than the 275 HART Communicator.

### ■ Easy Upgrade keeps your communicator current.

If that's not enough to get your attention, the 375 Field Communicator is also user upgradeable via the Internet. This means it is no longer necessary to send your communicator anywhere to have new device drivers added.



*Designed not only for use on the bench, the 375 Field Communicator enables you to do those tasks that just have to be done in the field.*

■ **Universal – HART and FOUNDATION fieldbus**

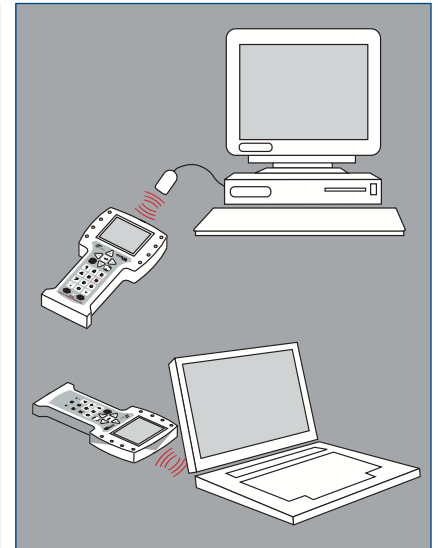
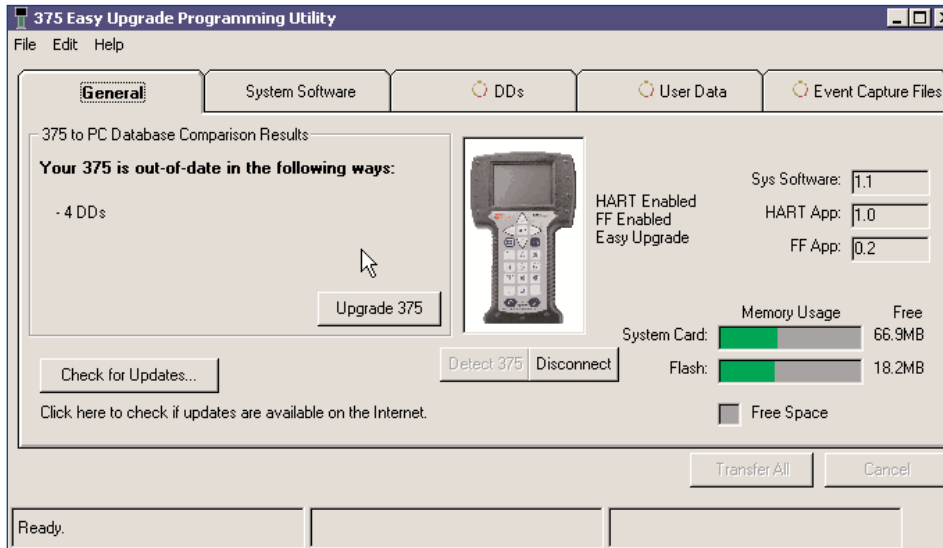
The 375 Field Communicator is designed to support all HART and FOUNDATION fieldbus devices. If you are familiar with the 275 HART Communicator, used in thousands of plants worldwide for more than ten years, you will appreciate universal HART support in a single intrinsically safe handheld communicator.

The 375 Field Communicator can also be used to configure all the FOUNDATION fieldbus devices

in your plant. Use it to perform diagnostics for effective start-up and troubleshooting of FOUNDATION fieldbus segments. Create a quality segment by diagnosing the network DC voltage and average noise. Detect power supply problems by monitoring low frequency noise on a segment. Locate incorrect terminations and faulty devices by diagnosing the communications signal level. No longer do you need to drag a laptop computer out into the plant to communicate with your FOUNDATION fieldbus devices.

With over 600 different HART and FOUNDATION fieldbus devices from more than 100 different vendors, having a single field communicator that works with everything is a big help. So, grab the 375 Field Communicator and go!





*Easy Upgrade allows communication between the 375 Field Communicator and a PC using IrDA. The IrDA port enables transfer of configuration data between the 375 and AMS as well as upgrading of new Device Descriptions and functionality.*

#### ■ User upgradeable

New HART and FOUNDATION fieldbus devices, as well as functional updates to existing devices are introduced continually by device vendors. Keeping up-to-date with the required Device Description drivers for all the devices in your plant can be a real challenge. Now, with the *Easy Upgrade* option, keeping your communicator updated with the most current Device Descriptions (DD's) is easy.

As new HART and FOUNDATION fieldbus DD's become available, download them from the Internet and upgrade your 375 Field Communicator.

In addition, as functional enhancements to the 375 HART and FOUNDATION fieldbus applications become available, download software updates from the Internet and upgrade your 375 Field Communicator. No longer is it necessary to send

your communicator to a service center to have new DD's or software updates added. No longer is it necessary to be without your communicator while you wait for upgrades. *Easy Upgrade* lets you update your own 375 Field Communicator. On your site, within your control, when it's convenient for you.

## ■ Intrinsically Safe.

The 375 Field Communicator meets the Intrinsic Safety requirements of the listed regulatory agencies and standards. All of the available Hazardous Locations approvals are provided in a single model option (see Ordering Information).

- CENELEC/ATEX
- Factory Mutual (FM)
- Canadian Standards Association (CSA)
- FISCO



Even the battery pack is approved for installation in hazardous areas. The 375 Field Communicator is designed for use in areas where laptops shouldn't go.

## ■ Rugged and Reliable.

It's called 'Field Communicator' for a reason. Some tasks just have to be performed at the device. The 375 Field Communicator is designed for tough use in your plant or mill.

Its large keys and physical navigation buttons allow for one-handed operation, even with your work gloves on. The rugged display is designed to take the knocks and shocks from normal use in the plant.

As for reliable, when was the last time you had to send your 275 HART Communicator in for repair? That's exactly the kind of reliability we've built into the 375. The 375 Field Communicator is designed, manufactured and tested to specifications that are even more demanding. The 375 Field Communicator is designed to go wherever you have to go to get the job done.

## Specifications

### PROCESSOR AND MEMORY SPECIFICATIONS

#### Microprocessor

- 80 MHz Hitachi® SH3

#### Memory Internal Flash

- 32 MB

#### System Card

- 128 MB or higher secure digital card

#### RAM

- 32 MB

#### Expansion Module

- 32 MB or higher secure digital card

### PHYSICAL SPECIFICATIONS

#### Weight

- Approximately 2 lb. (0.9kg) with battery

#### Display

- 1/4 VGA (240 by 320 pixels) monochrome 3.8" (9.6 cm) transreflective display with touch screen
- Anti-glare coated

#### Keypad

- 25 keys including 4 action keys, 12 alphanumeric keys, 4 programmable function keys, on/off, and 4 cursor-control (arrow) keys; membrane design with tactile feedback

### POWER SUPPLY SPECIFICATIONS

#### Battery Pack

- Rechargeable NiMH batteries

#### Battery Operating Time

- Up to ten hours depending on usage

#### Battery Charger Options

- Input voltage 85-240 VAC, 50/60 Hz
- Cables included with U.S., European and U.K. plugs

### CONNECTION SPECIFICATIONS

#### Battery Charger

- Mini DIN 4-pin jack

#### HART and Fieldbus

- Three 4mm banana plugs (one common to HART and FOUNDATION fieldbus)

#### IrDA Port

- IrDA (Infrared Data Access) port supporting up to 115 Kbps
- ± 15 degrees recommended maximum angle from center line
- Approximately 12" (30 cm) recommended maximum distance

### ENVIRONMENTAL SPECIFICATIONS

#### Usage

- -10° C (14° F) to +50° C (122° F)
- 0% to 95% RH (non-condensing) for 0° C (32° F) to +50° C (122° F)

#### Charge

- 0° C (32° F) to +40° C (104° F)

#### Storage

- -20° C (-4° F) to +55° C (131° F) with batteries

#### Storage Without Batteries

- -20° C (-4° F) to +60° C (140° F)

#### Enclosure Rating

- IP51 (from front)

#### Shock

- Tested to survive a 1-meter drop test onto concrete

### EASY UPGRADE REQUIREMENTS

#### Usage

- PC with internet access
- CD Rom drive
- IrDA port (or adapter)
- Windows 2000 or XP

## AMS

### ■ Interfaces with AMS.

The 375 Field Communicator is fully compatible with AMS, the industry standard for asset management software. In fact, Control Magazine readers selected AMS as the #1 Calibration Software package for 3 years in a row.

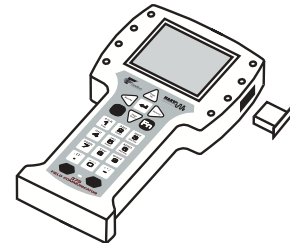


AMS allows you to configure, streamline calibration, document and troubleshoot HART and FOUNDATION fieldbus devices.

AMS uses the intelligence from field devices to create a predictive maintenance environment.

Transfer device configuration data via the infrared port on the 375 Field Communicator and AMS on your PC. Carry your 375 Field Communicator out to the field to configure or update one or many devices. Save device configurations in your 375 Field Communicator for safe storage or transfer to AMS. The optional

Configuration Expansion Module stores hundreds of device configurations safely in your 375 Field Communicator.



*The Configuration Expansion Module safely stores hundreds of device configurations.*

Together, the 375 Field Communicator and AMS enable you to more efficiently manage all of your devices, the assets that are the foundation of your process.



# AMS

# 375 FIELD COMMUNICATOR

### 375 Field Communicator Spare Parts List

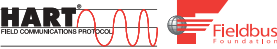
Description	Part Number
Ruggedized 250 Ohm Load Resistor	00275-0096-0001
Rechargeable NiMH Battery Pack with Accessory Case	00375-0002-0011
Power Supply/Charger (90-240 VAC, 50/60Hz, US/UK/EU connection types included)	00375-0003-0011
Lead Set with connectors	00375-0004-0001
Mounting Straps	00375-0005-0002
Carrying Case (with straps)	00375-0005-0003
Accessory Case (clips to Carrying Case)	00375-0005-0004
Stylus (pack of 5)	00375-0006-0001
IRDA to USB Adapter (1)	00375-0015-0002
Expansion Port Plug	00375-0031-0001
System Card - HART® and FOUNDATION™ fieldbus	00375-0042-0002
System Card - HART with <i>Easy Upgrade</i> Option (2)	00375-0042-0003
System Card - HART and FOUNDATION fieldbus with <i>Easy Upgrade</i> Option (2)	00375-0042-0004
Configuration Expansion Module	00375-0043-0001
Stand and Utility Plate	00375-0044-0001
Getting Started Guide	00375-0045-0001
User's Manual	00375-0047-0001
Resource CD (3)	00375-0049-0001

(1) For use with AMS/375 Interface or 375 *Easy Upgrade* Programming Utility.

(2) Includes unlimited upgrades to System Card for 3 year period.

(3) Contains 375 Programming Utility and System Software/DD database.

### 375 Field Communicator Ordering Information

Model	Product Description
375	Field Communicator (1)
Code	Communication Protocol
H	HART
F	HART and FOUNDATION fieldbus
	
Code	Battery Type
R	Rechargeable NiMH Battery Pack
Code	Power Supply/Recharger
1	Power Supply/Recharger (90/240 VAC, 50/60Hz, US/UK/EU connection types included)
9	None (2)
Code	Language
E	English (standard)
Code	Approval Certifications
KL	CENELEC/ATEX, FM, CSA Intrinsically Safe (includes FISCO as applicable)
NA	No Approval
Code	Easy Upgrade (3)
U	Easy Upgrade Option (includes unlimited upgrades to System Card for 3 year period)
9	Not Included
Code	Options
	<b>Spare Battery Pack</b>
B	Spare Rechargeable NiMH Battery Pack (4)
	<b>Expansion Module</b>
C	Configuration Expansion Module (5)
Typical Model Number: 375 H R 1 E KL U	

- (1) Base Model 375 includes Field Communicator Unit, System Card, Leadset with Connectors, Carrying Case, Getting Started Guide, User's Manual, 375 Resource CD, Stylus and Straps.
- (2) This option should only be considered if the user already has a 375 Power Supply/Charger. Note: Only 375 Power Supply/Chargers may be used with the 375 Battery Pack.
- (3) The *Easy Upgrade* capability allows the user to add new System Application software and Device Descriptions (DD's) to the 375. To upgrade without this feature, the System Card must be sent a Service Center.
- (4) A fully charged battery pack is capable of delivering power for 8 hours of typical field use. If requirements exceed this specification, a second battery pack is recommended.
- (5) The 375 is capable of storing a total of 25 configurations. For increased storage capacity, use the Configuration Expansion Module which is capable of storing in excess of 500 configurations.

#### Emerson Process Management

#### Asset Optimization Division

12001 Technology Drive  
Eden Prairie, MN 55344 USA  
T 1(512) 832-3235  
F 1(952) 828-3033

[www.fieldcommunicator.com](http://www.fieldcommunicator.com)

The contents of this publication are presented for informational purposes only, and while every effort has been made to ensure their accuracy, they are not to be construed as warranties or guarantees, express or implied, regarding the products or services described herein or their use or applicability. All sales are governed by our terms and conditions, which are available on request. We reserve the right to modify or improve the designs or specifications of our products at any time without notice.

All rights reserved. AMS is a mark of one of the Emerson Process Management group of companies. The Emerson logo is a trademark and service mark of Emerson Electric Company. All other marks are the property of their respective owners.