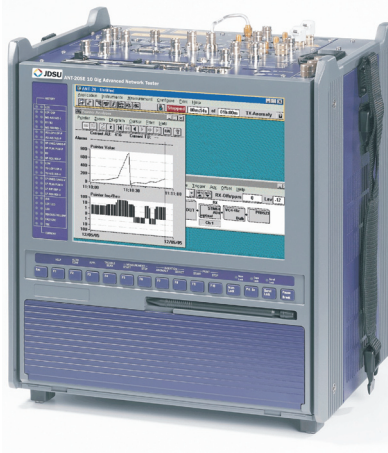


Acterna ANT-20SE Specs

Provided by www.AAATesters.com

ANT Advanced Network Tester Family

ANT-20, ANT-20se, ANT-10G



August 2006 Edition

Key Features

- Easy-to-use, portable, compact and comprehensive test kit for SDH/SONET bit rates up to STM-64/OC-192 including jitter and wander testing
- Platform offering SDH, SONET, PDH, DS_n, and ATM capabilities
- Fully featured configurations, including BERT, errors, alarms, performance and pointer analysis and synchronization testing
- Pinpoint troubleshooting of in-service networks
- Complemented by a lot of easy-access, automated test features
- Large, color touch screen plus graphical results presentation

A design proven successful on a global base

Over the last few years, there has been a dramatic increase in global communications services.

The ANT has been designed working with systems manufacturers and network operators to define new standards of quality and technical excellence while guaranteeing maximum ease of use for testers and technicians.

Powerful, precise test capability or simple operation? PDH, SDH, SONET with all bit rates from 1.5 Mb/s to 10 Gb/s, or ATM? You don't have to choose. The ANT family delivers sophisticated, precision testing that is easy to use even in the most demanding environment for all the above bit rates and for ATM. In addition, comprehensive jitter/wander measurements in complete compliance with the ITU-T Rec. O.172 are supported for comparable, insightful and accurate measurement results.

The remote operation facilities give you the opportunity to reduce your costs e.g. operating the instrument from any Windows PC via modem or Ethernet LAN.

With its high degree of measurement flexibility, the ANT enables testers to investigate all major quality parameters using a variety of tests, ranging from simple bit error rate tests (BERTs) and performance and pointer analysis, to even complex synchronization testing.

The ANT family can be configured to meet user needs. It can resolve signal structures right up to STM-64/OC-192 level and analyze them down to 64 kb/s. Access to all standardized mapping structures is possible, including mixed structures, for example DS1 in STM-1 or E1 in STS-1.

Configuration guide

ANT-20/ANT-20se solutions

| Packages | ANT version | Bit rates dual λ up to | Jitter/Wander | 10G single/dual | Jitter/Wander 10G | Ordering number |
|----------------------------|-------------|--------------------------------|---------------|-----------------|-------------------|-----------------|
| ANT-20 up to 155M el. P#13 | SDH | el. only | option | – | – | BN 3035/13 |
| ANT-20 up to 155M el. P#14 | SONET | el. only | option | – | – | BN 3035/14 |
| ANT-20 up to 155M P#1 | SDH | 155 M | option | – | – | BN 3035/08 |
| ANT-20 up to 155M P#15 | SONET | 155M | option | – | – | BN 3035/15 |
| ANT-20 up to 622M P#2 | SDH | 622 M | option | – | – | BN 3035/09 |
| ANT-20se up to 622M P#5 | SDH | 622 M | option | – | – | BN 3060/55 |
| ANT-20se up to 622M P#6 | SONET | 622 M | option | – | – | BN 3060/56 |
| ANT-20se up to 2.5G P#7 | SDH | 2.5 G | option | – | – | BN 3060/57 |
| ANT-20se up to 2.5G P#8 | SONET | 2.5 G | option | – | – | BN 3060/58 |

Add jitter/wander for ANT-20 and ANT-20se solutions

| Packages | Bit rates up to | Ordering number |
|------------------------------|-----------------|-----------------|
| Add jitter/wander up to 155M | 155 M | BN 3035/91.29 |
| Add jitter/wander up to 622M | 622 M | BN 3035/91.31 |
| Add jitter/wander up to 2.5G | 2.5 G | BN 3060/91.32 |

ANT-10G solutions

| Packages | ANT version | Bit rates dual λ up to | Jitter/Wander up to | 10G single/dual | Jitter/Wander 10G | Ordering number |
|-------------------------------|-------------------------------------|--------------------------------|---------------------|-----------------|-------------------|-----------------|
| ANT-10G 1550 P#1 | SDH | 2.5 G | – | 1550 nm | – | BN 3060/71 |
| ANT-10G 1550 P#2 | SDH | – | – | 1550 nm | x | BN 3060/72 |
| ANT-10G 1550 P#3 | SDH | 622 M | 622 M | 1550 nm | x | BN 3060/73 |
| ANT-10G 1550 P#4 | SDH | 2.5 G | – | 1550 nm | x | BN 3060/74* |
| ANT-10G Dual P#11 | SDH | 2.5 G | – | dual λ | – | BN 3060/81 |
| ANT-10G Dual P#12 | SDH | – | – | dual λ | x | BN 3060/82 |
| ANT-10G Dual P#13 | SDH | 622 M | 622 M | dual λ | x | BN 3060/83 |
| ANT-10G Dual P#14 | SDH | 2.5 G | – | dual λ | x | BN 3060/84* |
| Add 10G electrical interfaces | for ANT-10G 1550 nm packages | | | | | BN 3060/91.48 |
| Add 10G electrical interfaces | for ANT-10G dual λ packages | | | | | BN 3060/91.54 |

* Wander only Rx

Options/accessories for all ANTs

| Includes options | Bit rates up to | Ordering number |
|-------------------------------|-----------------|-----------------|
| Add ATM up to 155M | 155 M | BN 3035/90.63 |
| Add ATM up to 622M | 622 M | BN 3060/90.63 |
| CATS professional | | BN 3035/95.95 |
| Remote control interface GPIB | | BN 3035/92.10 |
| Remote operation (PcAnywhere) | | BN 3035/95.30 |
| Optical power splitter ANTs | | BN 3035/90.49 |
| Calibration report ANTs | | BN 3060/94.01 |
| Hard case ANT-20 | | BN 0960/00.08 |
| Soft case ANT-20 | | BN 3035/92.02 |
| Hard case ANT-20se/10G | | BN 3035/92.03 |

Detailed specifications

Mainframe

Specifications for either SDH or SONET valid for ANT-20/ANT-20se/ANT-10G SDH packages (all except BN 3060/58) or ANT-20se SONET package (only BN 3060/58) respectively

Generator PDH/SDH (SDH version) or DSn/SONET (SONET version)

Digital outputs (SDH version)

Interfaces to ITU-T Recommendation G.703 75 Ω unbalanced output, adapter jack selectable from Versacon 9 adapter system. Bit rates and line codes:

| | |
|---------------------------|-----------|
| 2048, 8448 and 34368 kb/s | HDB3, CMI |
| 139264 and 155520 kb/s | CMI |

120 Ω balanced output, Lemosajack. Bit rate and line codes:

| | |
|-----------------|---------------|
| 2048 kb/s | HDB3, CMI |
| Bit rate offset | ± 500 ppm |
| Step size | 0.001 ppm |

Digital outputs (SONET version)

Interfaces to Telcordia GR-253, TR-TSY-000499, ANSI T1.102 75 Ω coaxial output, adapter jack selectable from Versacon 9 adapter system.

Bit rates and line codes

| | |
|-------|---------------------------|
| DS1 | 1544 kb/s; B8ZS, AMI, CMI |
| DS2 | 6312 kb/s; B8ZS, CMI |
| DS3 | 44,736 kb/s; B3ZS, CMI |
| STS-1 | 51,840 kb/s; B3ZS, CMI |
| STS-3 | 155,520 kb/s; CMI |

100 Ω balanced output, Bantam jack, bit rate and line codes

| | |
|-----|---------------------------|
| DS1 | 1544 kb/s; B8ZS, AMI, CMI |
|-----|---------------------------|

Output pulses

| | |
|-----------------|------------------|
| DS1 | DSX-1 compatible |
| DS2 | rectangular |
| DS3, STS-1 | HIGH, LOW, DSX-3 |
| Bit rate offset | ± 500 ppm |
| Step size | 0.001 ppm |

Clock

- Internal clock generation at all of the bit rates listed above.

Clock stability ± 2 ppm

- Synchronization to external signals via 75 Ω unbalanced input (SDH version) or 100 Ω unbalanced input (SONET version), BNC jack:

Reference clock 2048 kHz and 1544 kHz
2048 kb/s (HDB3), 1544 kb/s (B8ZS) or receive signal.

- Clock outputs

Clock output at frequency of generator signal, approx. 400 mV (when terminated into 75 Ω), BNC jack.

2048 kHz reference clock output via trigger output.

STM-1 output signal (electrical) (SDH)

Generation of a STM-1 signal conforming to ITU-T Recommendation G.707

STS-1 and STS-3 output signal (electrical) (SONET)

Generation of a STS-3/STS-1 signal conforming to Telcordia GR-253, ANSI T1.105. The STS-3 signal consist of one internal STS-1 tributary signal with the remaining two tributaries filled with UNEQ. The STS-1 signal consists of one selectable mapping.

STM-1/STS-1 mappings (SDH/SONET)

| |
|---|
| C4 mapping (140 Mb/s in STM-1 and STS-3c) |
| STS-3 mapping BERT in STS-3c (and 140 Mb/s in STM-1) |
| STS-1 SPE mapping DS3 in STS-1 |
| C3 mapping (45 Mb/s in STM-1, AU-3/AU-4) |
| C3 mapping (34 Mb/s in STM-1, AU-3/AU-4) |
| C2 mapping (6 Mb/s unframed/Bulk in STM-1) |
| VT6 SPE mapping (6 Mb/s in unframed/Bulk in STS-1) |
| C12 mapping (2 Mb/s in STM-1, AU-3/AU-4) |
| VT2 SPE mapping E1 in STS-1 |
| C11 mapping (1.5 Mb/s in STM-1, AU-3/AU-4, TU11/TU12) |
| VT1.5 SPE mapping DS1 in STS-1 |

Content of the selected container

Framed or unframed PDH/DSn test pattern

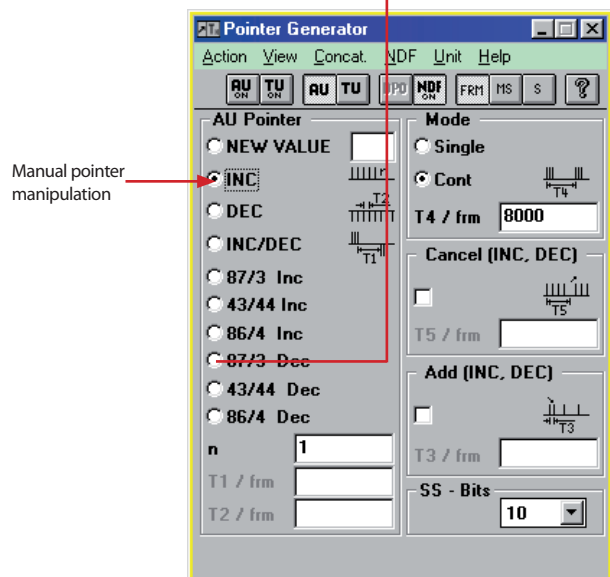
PDH multiplex signal

External PDH/DSn signal

Test pattern without stuffing bits (bulk signal to O.181)

Content of non-selected containers framed PRBS 2¹¹⁻¹

Or using predefined standard sequences



Insertion of pointer actions

Generation of pointer actions

Generation of pointer actions at the AU and TU levels simultaneously (SDH) and at the STS-1 and VT levels simultaneously (SONET).

- Pointer sequences to G.783 (SDH) and to T1.105.03 (SONET) with programmable spacing
- Pointer increment/decrement (continuously repeated)
- Single pointer
- Pointer value setting with or without NDF
- Trigger types: Single or continuous repeat

Content of SOH and POH bytes (SDH) or TOH and POH bytes (SONET)

The content of all bytes with the exception of B1, B2, B3 and H1 to H4 is programmable with any byte or a user defined byte-sequence p in m in n (p frames in m frames and the entire sequence repeated n times) can be inserted.

Bytes E1, E2, F1, F2, and byte groups D1 to D3 and D4 to D12

Transmission of a PRBS test pattern with bit error insertion (see test patterns)

Insertion of an external data signal via V.11 interface (also for K1, K2 and K3)

Trace identifier

| | |
|----------------------|--|
| J0, J1, J2 | programmable 16 byte ASCII sequence with CRC |
| J1, J2, additionally | programmable 64 byte ASCII sequence |
| H4 byte | 4 or 48 byte sequence |

Error insertion

| | |
|---------------------|--|
| Error types (SDH) | B1, B2, B3, BIP2 parity errors, frame alignment signal errors, MS-REI, HP-REI, LP-REI, bit errors in test pattern, code errors (single errors) |
| Error types (SONET) | B1, B2, B3, BIP-V parity errors, frame errors, REI-L, REI-P, REI-V, bit errors in test pattern, BPV (single errors) |

Triggering

| | |
|--|--|
| Single error or error ratio | 2×10^{-3} to 1×10^{-10} |
| for B1, B3, HP-REI, LP-REI (SDH) | 2×10^{-4} to 1×10^{-10} |
| for B1, B3, REI-P, REI-V (SONET) | 2×10^{-4} to 1×10^{-10} |
| for bit errors | 1×10^{-2} to 1×10^{-9} |
| Step size for mantissa and exponent | 1 |
| Burst error: m anomalies in n periods | |
| For FAS, B1, B2, B3, MS-REI, HP-REI (SDH) or FAS, B1, B2, B3, REI-L, REI-P (SONET) | m = 1 to 4.8×10^6 |
| | and n = 2 to 8001 frames or 0.2 s to 600 s |

Alarm generation

Dynamic:

| | |
|-------------------|---|
| Alarm types (SDH) | LOF, MS-AIS, MS-RDI, AU-LOP, AU-AIS, HP-UNEQ, HP-RDI, HP-RDIEP, HP-RDIES, HP-RDIEC, TU-LOP, TU-AIS, LP-UNEQ, LP-RDI, LP-RDIEP, LP-RDIES, LP-RDIEC, LP-RFI |
|-------------------|---|

| | |
|---------------------|---|
| Alarm types (SONET) | LOS, AIS-L, RDI-L, LOP-P, AIS-P, UNEQ-P, RDI-P, RDIEPP, RDIEPS, RDIEPC, PDI-P, LOP-V, AIS-V, LOM, UNEQ-V, RDI-V, RDIEVP, RDIEVS, RDIEVC, RFI-V, PDI-V |
|---------------------|---|

| | |
|--------------------------------------|---------------------------------|
| m alarms in n frames | m = 1 to n-1, $n_{\max} = 8000$ |
| or t1 alarm active, t2 alarm passive | t1 = 0 to 60 s, t2 = 0 to 600 s |

Static (on/off):

| | |
|-------------------|--|
| Alarm types (SDH) | LOS, LOF, MS-AIS, RS-TIM, MS-RDI, AU-LOP, AU-AIS, HP-UNEQ, HP-PLM, HP-TIM, HP-RDI, HP-RDIEP, HP-RDIES, HP-RDIEC, TU-LOP, TU-AIS, LP-UNEQ, LP-PLM, LP-TIM, LP-RDI, LP-RDIEP, LP-RDIES, LP-RDIEC, LP-RFI |
|-------------------|--|

| | |
|---------------------|--|
| Alarm types (SONET) | LOS, LOF, AIS-L, TIM-L, RDI-L, LOP-P, AIS-P, UNEQ-P, PLM-P, TIM-P, RDI-P, RDIEPP, RDIEPS, RDIEPC, PDI-P, LOP-V, AIS-V, LOM, UNEQ-V, PLM-V, TIM-V, RDI-V, RDIEVP, RDIEVS, RDIEVC, RFI-V |
|---------------------|--|

PDH output signals (SDH)

Signal structures for all bit rates

Unframed test pattern

Framed test pattern (to ITU-T O.150); CRC-4 selectable for 2 Mb/s

Error insertion

| | |
|---|---|
| Error types | bit errors, FAS errors, code errors (single errors) |
| Trigger types: Single error or error rate | 1×10^{-2} to 1×10^{-9} |
| Step size for mantissa and exponent | 1 |

Alarm generation, dynamic

| | |
|----------------------|---------------------------------|
| Alarm types | LOF, RDI |
| m alarms in n frames | m = 1 to n-1, $n_{\max} = 1000$ |

Alarm generation, static (on/off)

| | |
|-------------|--------------------|
| Alarm types | LOS, LOF, AIS, RDI |
|-------------|--------------------|

Test patterns

| | |
|--|---------|
| Pseudo-random bit sequences | |
| PRBS: $2^{11}-1$, $2^{15}-1$, $2^{20}-1$, $2^{23}-1$, $2^{11}-1$ inv., $2^{15}-1$ inv., $2^{20}-1$ inv., $2^{23}-1$ inv. | |
| Programmable word length | 16 bits |

DS1, DS2 and DS3 output signals (SONET)

Signal structures

Unframed test pattern

Framed test pattern (only DS1, DS3)

| | |
|---------------------|---------------|
| DS1 frame structure | SF, ESF |
| DS3 frame structure | M13, C parity |

Error insertion

| | |
|----------------------------|---|
| Bit errors in test pattern | error rate, single error |
| BPV | single error |
| DS1 F bit (LOF) | single error, 2 in 4, 2 in 5, 2 in 6 |
| CRC-6 (ESF) | single error, error rate |
| DS3 F bit (LOF) | single error, 2 in 2, 2 in 3, 3 in 3, 3 in 15, 3 in 16, 3 in 17 |
| P parity, CP parity, FEBE | single error, error rate |
| Error rate | 1×10^{-2} to 1×10^{-9} |

Alarm insertion

| | |
|-----|------------------------------|
| DS1 | LOF, AIS, YELLOW |
| DS3 | LOF, AIS; YELLOW, IDLE, FEAC |

FEAC far end alarm and control signals

To test that FEAC alarm and status information is correctly transmitted, the relevant signal codes can be selected and inserted into the DS3 C-bit frame format.

Test patterns

| | |
|---|---------|
| Pseudo-random bit sequences | |
| PRBS: $2^{11}-1$, $2^{15}-1$, $2^{20}-1$, QRSS 20, $2^{11}-1$ inv., $2^{15}-1$ inv., $2^{20}-1$ inv., $2^{23}-1$ inv., $2^{31}-1$ inv. | |
| Programmable word length | 16 bits |

Receiver PDH/SDH (SDH)

Digital inputs (SDH)

Interfaces to ITU-T Recommendation G.703

75 Ω unbalanced input; adapter jack selectable from Versacon 9 adapter system, bit rates and line codes:

| | |
|---------------------------|-----------|
| 2048, 8448 and 34368 kb/s | HDB3, CMI |
| 139264 and 155520 kb/s | CMI |

120 Ω balanced input, Lemosa jack, bit rate and line codes:

| | |
|------------------------------|---------------|
| 2048 kb/s | HDB3, CMI |
| Clock recovery pulling range | ± 500 ppm |

Selectable input gain

| | |
|--|-------------|
| CMI coded | 15 to 23 dB |
| B3ZS, B8ZS, HDB3, AMI coded | 15 to 26 dB |
| Selectable adaptive equalizers for 1544, 2048, 34368, 44736, 51840, 139264 and 155520 kb/s | |

Monitor input for STM-1 and STM-4 NRZ signals.

STM-1 and PDH receive signal (SDH)

For signal structures see generator

Receiver PDH/SDH (SONET)

Digital inputs (SONET)

Interfaces to Telcordia GR-253, TR-TSY 000499, ANSI T1.102.

75 Ω coaxial input; adapter jack selectable from Versacon 9 adapter system, bit rates and line codes:

| | |
|-------|---------------------------|
| DS1 | 1544 kb/s; B8ZS, AMI, CMI |
| DS2 | 6312 kb/s; B8ZS, CMI |
| DS3 | 44,736 kb/s; B3ZS, CMI |
| STS-1 | 51,840 kb/s; B3ZS, CMI |
| STS-3 | 155,520 kb/s; CMI |

100 Ω balanced input, Bantam jack, bit rate and line codes:

| | |
|----|---------------------------|
| DS | 1544 kb/s; B8ZS, AMI, CMI |
|----|---------------------------|

Input levels

| | |
|---|------------------|
| DS1 | DSX-1 compatible |
| DS3, STS-1 | HIGH, LOW, DSX-3 |
| Clock recovery pulling range | ± 500 ppm |
| Selectable input gain, CMI coded | 15 to 23 dB |
| B3ZS, B8ZS, HDB3, AMI coded | 15 to 26 dB |
| Selectable adaptive equalizers for DS3, STS-1 | 450 ft |
| DS1 | 1310 ft |

Monitor input for STS-3 and STS-12 NRZ signals

STS-1, STS-3, DS1 and DS3 receive signals (SONET)

For single structures see generator.

Acoustic indication of anomalies and defects

Beeper upon any anomaly and defect.

Trigger output (SDH/SONET)

75 Ω BNC connector, HCMOS signal level.

Pulse output for received bit errors, transmit frame trigger, transmit pattern trigger or 2048 kHz reference clock.

Measurement types

Error measurements

All errors are evaluated and displayed in parallel

| | |
|---------------------|---|
| Error types (SDH) | B1, B2, B3 parity errors |
| | MS-REI, HP-REI, bit errors in test pattern, code errors |
| Error types (SONET) | B1, B2, B3, BIP-V parity errors, frame errors |
| | REI-L, REI-P, REI-V, bit errors in test pattern, BPV |

Additionally, for

| | |
|--|---|
| DS1 | CRC errors |
| DS3 | P-parity errors, CP-parity errors, FEBE |
| Error count, error rate, intermediate errors | |

Alarm detection

All alarms are evaluated and displayed in parallel

| | |
|---|---|
| Alarm types (SDH) | LOS, OOF, LOF, MS-AIS, MS-RDI, RS-TIM, LTI, AU-AIS, AU-LOP, AU-NDP, HP-RDI, HP-UNEQ, HP-TIM, HP-PLM, AIS, RDI, LSS, TU-NDP, TU-LOP, TU-AIS, LP-UNEQ, LP-RDI, LP-RDIEP, LP-RDIES, LP-RDIEC, LP-RFI |
| Alarm types (SONET) | LOS, OOF, LOF |
| Additionally, for STS | AIS-L, RDI-L, AIS-P, LOP-P, NDP-P, RDI-P, LTI, AU-AIS, AU-LOP, AU-NDP, UNEQ-P, TIM-P, PLM-P, LOP-V, AIS-V, LOM, UNEQ-V, PLM-V, TIM-V, RDI-V, NDP-V, RDIEVP, RDIEVS, RDIEVC, RFI-V |
| Additionally, for DS1, DS3 LSS, AIS; RAI (YELLOW), IDLE (DS3), FEAC (DS3) | |

Performance analysis (SDH)**G.821**

Evaluation of PDH and SDH systems to ITU-T Recommendation

ES, EFS, SES, DM and UAS are evaluated. Pass/fail assessment based on line length allocation of 0.1 to 100%. The SES and DM thresholds are user-settable. Evaluation for higher bit rates (up to 140 Mb/s) is obtained using a multiplex factor as per G.821, Annex D.

Measurements can be made using the following events:

| | |
|-------------|---|
| PDH systems | bit errors, FAS2, FAS8, FAS34, FAS140, CRC and E-bit errors |
| SDH systems | payload bit errors (PDH and bulk), overhead bytes E1, E2, F2, D1 to D3, D4 to D12 |

G.826

Evaluation to ITU-T Recommendation

EB, BBE, ES, EFS, SES and UAS are evaluated.

Pass/fail assessment based on line length allocation of 0.1 to 100%.

The SES and UAS thresholds are user-settable.

In-service measurement (ISM)

Simultaneous in-service measurement of near end and far end of a selected path:

Near end: B1, B2, HP-B3, LP-B3, BIP2, FAS at 140/34/8 or 2 Mb/s, CRC-4

Far end: HP-REI, LP-REI, E-bit at 2 Mb/s

Out-of-Service Measurement (OOS)

Out of service measurement using bit errors in the test pattern (for PDH and SDH).

G.828 and G.829

Evaluation of SDH systems to ITU-T Recommendation

The G.828 defines error performance parameters and objectives for international synchronous paths.

ES, EFS, SES, BBE, SEP and UAS are evaluated.

Pass/fail assessment based on line length allocation of 0.1 to 100%.

The SES and UAS thresholds are user-settable. The SEP can be switched off for assessment.

The recommendation G.829 defines error performance events and block structures for SDH multiplex and regenerator sections.

M.2100

Evaluation of PDH and SDH systems to ITU-T Recommendation

This recommendation describes requirements during line-up and maintenance (in-service).

ES, EFS, SES and UAS are evaluated.

Pass/fail assessment based on line length allocation of 0.1 to 100%.

The UAS and BISO (bringing into service objectives) thresholds are user-settable.

ISM simultaneously for near end and far end of a selected path:

PDH systems,

| | |
|-------------|---|
| near end | bit errors, FAS2, FAS8, FAS34, FAS140, CRC-4 |
| far end | E-bit at 2 Mb/s |
| SDH systems | payload bit errors (PDH and bulk), overhead bytes E1, E2, F2, D1 to D3, D4 to D12 |

This operating mode allows application of the "Bringing into Service" procedures as per ITU-T Rec. M.2110 and the determination of "Performance Information" as per ITU-T Rec. M.2120.

M.2101

Evaluation of SDH systems to ITU-T Recommendation (revision 09/99)

This recommendation describes requirements during line-up and maintenance (in-service)

ES, EFS, BBE, SEP, SES and UAS are evaluated according to the newest Revision of M.2101.

Pass/fail assessment based on line length allocation of 0.1 to 100%.

The UAS and BISO (bringing into service objectives) thresholds are user-settable.

ISM simultaneously for near end and far end of a selected path or multiplex section:

| | |
|---------------------|---|
| Evaluated anomalies | payload bit errors (TSE), B1, B2, B3 and BIP2, MS-REI, HP-REI, LP-REI |
|---------------------|---|

This operating mode allows application of the "Bringing into Service" procedures as per ITU-T Rec. M.2110 and the determination of "Performance Information" as per ITU-T Rec. M.2120.

Performance analysis (SONET)

ES, SES, EFS, SEFS, UAS are evaluated

In-service measurements (ISM) (for SONET)

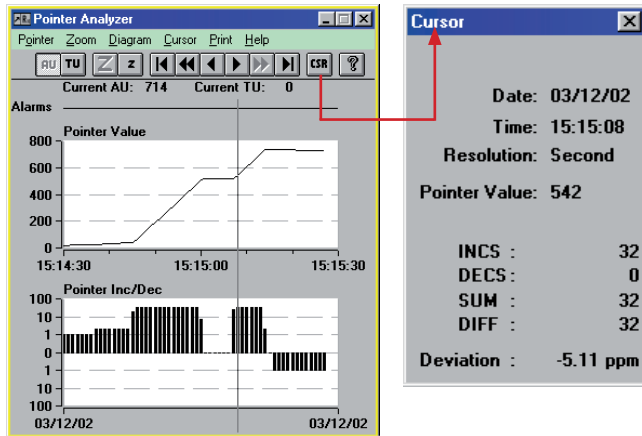
Simultaneous ISM of the near end and far end of a selected path

| | |
|-----------------|------------------------------|
| Near end | B1, B2, B3, BIP-V, CRC-6 |
| Far end | REI-L, REI-P, REI-V |
| DS1, DS3 events | Fbit, parity, FEBE, C parity |

Out of service (OOS) measurements (for SONET)

OOS evaluation using bit errors in test pattern

Analysis of AU and TU pointer actions



Graphic pointers. Display showing additional evaluation of cursor position

Display of

- Number of pointer operations:
Increment, Decrement, Sum (Increment + Decrement), Difference (Increment – Decrement)
- Pointer value

Clock frequency measurement

The deviation of the input signal clock frequency from the nominal frequency is displayed in ppm.

Delay measurement

A delay measurement is used to line-up satellite hops, to test the maximum permitted latency in storage exchanges and cross-connect systems and to check the loop circuits of regenerators. The ANT measures the time taken for the test pattern to be transmitted from the generator back to the receiver via the path under test. The measurement is made on the test patterns in the selected channel, in the containers (bulk or PDH/DSn) for SDH/SONET or in the selected channel at the lowest hierarchy level of PDH/DSn multiplex systems. To avoid ambiguities in the measurement, two measurement times are provided.

Measurement range (for PDH/SDH)

| | |
|------------------------------|---------------------|
| Bit rates from 8 to 155 Mb/s | 1 μ s to 1 s |
| Bit rate 2 Mb/s | 10 μ s to 5 s |
| Bit rate 64 kb/s | 100 μ s to 16 s |

Measurement range (for DSn/SONET)

| | |
|-------------------------------|-------------------|
| Bit rates from 34 to 155 Mb/s | 1 μ s to 1 s |
| Bit rate 1.5 Mb/s | 10 μ s to 5 s |

SOH (for SDH), TOH (for SONET) and POH evaluation

Display of complete SOH (for SDH), TOH (for SONET) and POH and clear text interpretations of K1 to K4, S1, C2, V5

For the bytes E1, E2, F1, F2 and byte groups D1 to D3 and D4 to D12:

- BERT using test pattern from the generator
- Output of the data signal via the V.11 interface (also for K1/K2, K3 and N1 and N2)

For the trace identifier

| | |
|--------|---|
| J0 | display of 16 byte ASCII sequence |
| J1, J2 | display of 16 or 64 byte ASCII sequence |

Measurement interval

| | |
|-------------------|--|
| Variable | 1 second to 99 days |
| Measurement start | manual or automatic timer (user setting) |
| Measurement stop | manual or automatic timer (user setting) |

Memory for errors, pointer operations and alarms

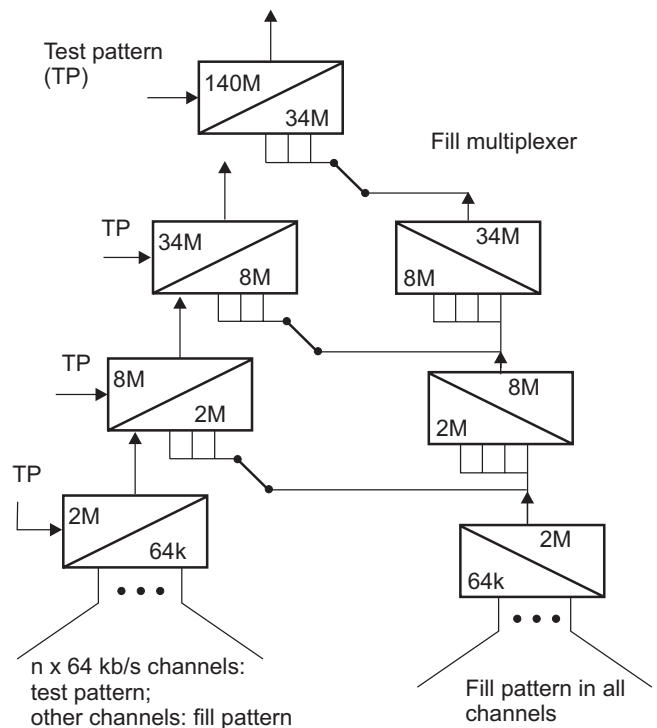
| | |
|---|--------|
| Resolution of error events and pointers | 1 s |
| Alarm resolution | 100 ms |

64k/140M MUX/DEMUX chain

Provides n x 64 kb/s to 140 Mb/s multiplex and demultiplex functions. The output signal is fed to the electrical interface and is available as payload in mappings.

Alarms and errors can be generated and analyzed.

Path multiplexer



M13 MUX/DEMUX chain

M13 multiplexers are used in North America in hybrid networks and synchronous system cross-connects.

Provides n x DS0 to DS3 multiplex and demultiplex functions. The output signal is fed to the electrical interface and is available as payload in mappings.

Alarms and errors can be generated and analyzed.

Drop&Insert (SDH)

Following functions:

1. Generator and receiver operate independently

as mapper and demapper. The PDH signal from a selected channel is dropped from the receive signal and output to a connector. An external or internal PDH signal is inserted into the transmit signal.

2. Through mode with jitter injection, error insertion and overwriting of SOH bytes:

available for all bit rates up to 10 Gb/s

The received signal is looped through the ANT family and re-transmitted (generator and receiver coupled).

The looped-through synchronous signal can be manipulated if required:

- Overwriting bytes in the SOH (except B1, B2, H1 to H3)
- Overwriting of B3 byte at 10 Gb/s
- Anomaly insertion
- Defect generation by programming the SOH
- Jitter injection (jitter options required)

3. Block and replace (B&R)

For this function, the ANT family is looped into the working fiber or a ring. B&R allows replacement of a synchronous container (for example STM-1 including SOH, POH and payload.) in an STM-N signal. This can then be measured by the ANT family from the ring. By inserting specific errors, the error thresholds of the APS mechanism in the system can be tested.

Additional input and output for tributary signals 75Ω, coaxial BNC; line codes as for mainframe instrument.

Input and output for balanced tributary signals: Use balanced connectors on mainframe.

Drop&Insert (SONET)

Following functions:

1. Generator and receiver operate independently

as mapper and demapper. The DS1/DS3 signal from a selected channel is dropped from the receive signal and output to a connector. An external or internal DS1/DS3 signal is inserted into the transmit signal.

2. Through mode with jitter injection, error insertion and overwriting of TOH bytes:

The received signal is looped through the ANT family and re-transmitted (generator and receiver coupled). The looped-through synchronous signal can be manipulated if required for:

- Overwriting bytes in the TOH (except B1, B2, H1 to H3)
- Overwriting of B3 byte at 10 Gb/s
- Anomaly insertion
- Defect generation by programming the TOH
- Jitter injection (Jitter options required)

3. Block and replace (B&R)

For this function, the ANT family is looped into the working fiber or a ring. B&R allows replacement of a synchronous tributary (for example STS-1 including TOH, POH and payload.) in a OC-N signal. This can then be measured by the ANT family from the ring. By inserting specific

errors, the error thresholds of the APS mechanism in the system can be tested.

Ring testing – APS time measurement

In synchronous networks, a defined maximum switch-over time is necessary for the traffic in case of a fault. To verify compliance with this requirement, the ANT family measures the switch-over time with 1 ms resolution. The result can be printed.

| | |
|---|-----------------------------------|
| Criteria for the time measurement (for SDH) | TU-AIS, MS-AIS, AU-AIS, bit error |
| Criteria for the time measurement (for SONET) | AIS-L, AIS-V, AIS-P, bit error |
| Max. measurable switch-over time | 2 s |
| Resolution | 1 ms |
| Allowable error rate for user signal | $<2 \times 10^{-4}$ |

Ring testing – Byte capture SOH and POH (for SDH)

To analyze the SOH/POH functions, it is necessary to capture individual bytes vs. time, allowing detection of errors or short-term changes with frame level precision.

The capture function is started by a selectable trigger. Values for a selected byte are stored and can be accessed subsequently in a table of values.

Particularly in capturing the APS sequences, the bytes (K1/K2) are displayed as an abbreviation of the standard commands.

The function also allows recording of the N1 or N2 bytes for evaluation of “Tandem Connection” information.

H4 sequences can also be analyzed very easily. The results can be printed or exported.

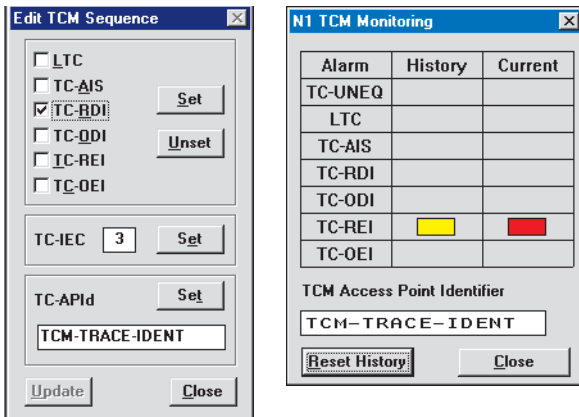
| | |
|---|--|
| Capture bytes for STM-0/1, el. and opt. | all SOH/POH bytes |
| STM-N el. and opt. | all SOH/POH bytes, channel 1 except A1, A2, B1 |
| Storage depth for a byte | 266 |
| K1, K2 | 200 |
| Trigger events | MS-AIS, AU-AIS, MS-RDI, AU-LOP, editable value in trigger byte |
| Capture resolution | frame precision |

Ring testing – Byte capture TOH and POH (for SONET)

To analyze the TOH/POH functions, it is necessary to capture individual bytes vs. time, allowing detection of errors or short-term changes with frame level precision. The capture function is started by a selectable trigger. Values for a selected byte are stored and can be accessed subsequently in a table of values. Particularly in capturing the APS sequences, the bytes (K1/K2) are displayed as an abbreviation of the standard commands. The function also allows recording of the N1 or N2 bytes for evaluation of tandem connection (TCM) information.

H4 sequences can also be analyzed very easily. The results can be printed or exported.

| | |
|--|---|
| Capture bytes for STS-1/3/3c, el. and opt. | all TOH/POH bytes |
| OC-N el. and opt. | all TOH/POH bytes, except A1, A2, B1 |
| Storage depth for a byte | 266 |
| K1, K2 | 200 |
| Trigger events | AIS-L, AIS-V, AIS-P, RDI-L, LOP-P, editable value in trigger byte |
| Capture resolution | frame precision |

Tandem connection monitoring (TCM) (SDH)

TCM monitor and editor

TCM is a method used to monitor the performance of a subsection of an SDH path via the N1/N2 bytes. This is particularly useful when the path is routed via different network providers. If errors occur on an end-to-end connection, you can use TCM to determine which sub-network the errors occurred in.

The ANT family helps to monitor the content of the N1/N2 bytes and provides users with easy interpretation of the detailed events.

| | |
|--|--|
| Capture TCM frames | all N1/N2 bytes, TC-IEC, TC-AIS, TC-REI, TC-OEI |
| Trigger events | Start of TCM frame (TCM FAS word) |
| Storage depth | 266 bytes (3.5 TCM frames) |
| On-line monitoring of alarms and trace identifier. | |
| Display of actual and history values | TC-UNEQ, LTC, TC-AIS, TC-RDI, TC-ODI, TC-REI, TC-OEI |
| On-line display of TCM access point identifier | |
| TCM error measurement | |
| Error types | TC-IEC, TC-DIFF, TC-REI, TC-OEI |

TCM byte sequencer and editor (for SDH)

This serves to test a sequential TCM process (tandem connection monitoring) in the N1/N2 bytes. A sequence of 76 bytes simulating a TCM frame (equivalent frame) is generated. Individual values can be edited as binary or hexadecimal values to simulate various events for TCM evaluations.

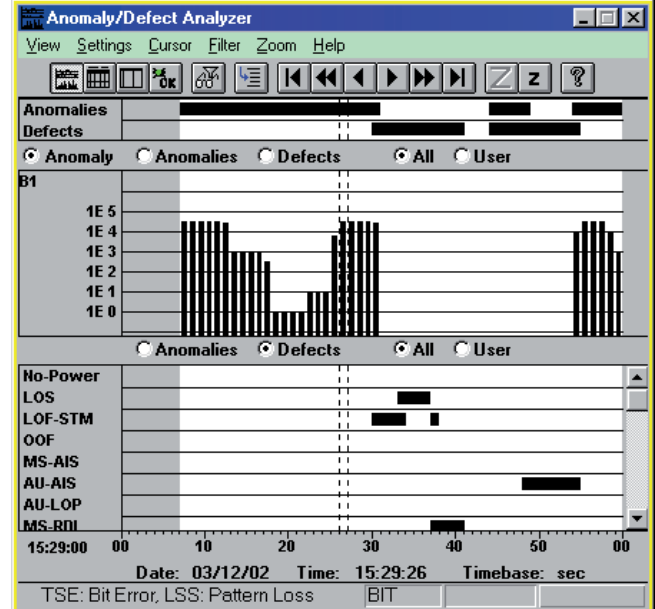
Additionally major events may be simulated, line alarm, errors and trace identifier

| | |
|--------|------------------------|
| Alarms | TC-ODI, TC-AIS, TC-RDI |
| Errors | TC-OEI, TC-IEC |
| Trace | TC-APID |

Result display and instrument operation**Numerical display**

Display of absolute and relative values for all error types

| | |
|----------------------|---------------------|
| Intermediate results | every 1 s to 99 min |
|----------------------|---------------------|

Graphical display (histogram)

Histogram results and display

Display of errors, pointer operations/values and alarms as bar graphs vs. time

| | |
|------------------|---|
| Units, time axis | seconds, minutes, 15 minutes, hours, days |
|------------------|---|

Tabular display

Display of all alarm and error events with time stamp

Result printout

ANT family supports a variety of dot-matrix, ink jet and laser printers. (Windows print manager)

Printer interfaces

| | |
|----------|----------------------------|
| Serial | V.24/RS232 |
| Parallel | Centronics/EPP/IEEE P 1284 |

Result export

Results are stored in a database and can be processed using standard PC software.

Instrument operation

ANT family is operated using the standard Microsoft® Windows™ graphical user interface.

Operation is menu-controlled using the trackball or touch screen. A mouse can also be connected if desired.

Application selection and storage

ANT family includes an applications library to which customer-specific applications can be added. All applications are stored internally on the built-in hard disk drive and can be copied to any other ANT via floppy disk, USB, PCMCIA card and LAN.

Easy to use filter functions allow quick selection of the desired application.

Off-line analysis software

The software runs on standard PCs and permits comprehensive analysis of stored ANT results. After loading the results, the ANT settings during the measurement and the stored results can be accessed. Zoom and filter functions allow detailed evaluation. The processed results can be exported in CSV format for importing into other programs such as MS Excel or MS Word for Windows for producing documentation.

Touch screen display

Color TFT screen 10.4", 256 colors
Resolution 640 x 480 pixels (VGA standard)

The touch screen allows very easy point and shoot operation.

Built-in PC

ANT family uses a Pentium PC as internal controller so that standard PC applications can also be run on the instrument.

RAM capacity 128 MB
Hard disk drive 30 GB

USB interface, 10/100 Mbit Ethernet interface are included

Keyboard

Full keyboard for text input, extended PC applications and future requirements. The keyboard is protected by a fold back cover.

An additional connector is provided for a standard PC keyboard.

External display connector

Simultaneous display with built-in screen

Interface VGA standard

PCMCIA interface

Type PCMCIA 2.1 types I, II and III

The PCMCIA interface provides access to GPIB, LANs, etc., via adapter cards.

Power outage function

In the event of an AC line power failure during a measurement, ANT family saves all data. As soon as the AC line voltage is reestablished, the measurement is resumed. Previous results are retained and the time of the power failure is recorded along with other events.

Optical connectors

Optical connectors adapters included in the packages according to the number of optical interfaces, optical connector types need to be selected

General specifications**Power supply**

AC line voltage, Automatic switching 100 to 127 V and 220 to 240 V
AC line frequency 50/60 Hz
Power consumption ANT-20 (all options fitted) max. 300 VA
Power consumption ANT-20se/ANT-10G (all options fitted) max. 600 VA
Safety class to IEC 1010-1 class I

Ambient temperature

Nominal range of use +5 to +40 °C
Storage and transport range -20 to +70 °C
ANT-20 dimensions (w x h x d) in mm approx. 320 x 350 x 170
inches approx. 12.6 x 13.8 x 6.7

ANT-20 weight approx. 10 kg/22 lb
ANT-20se/ANT-10G
Dimensions (w x h x d) in mm approx. 320 x 350 x 280 mm
in inches approx. 12.6 x 13.8 x 11 in
ANT-20se/ANT-10G weight approx. 15 kg/33 lb

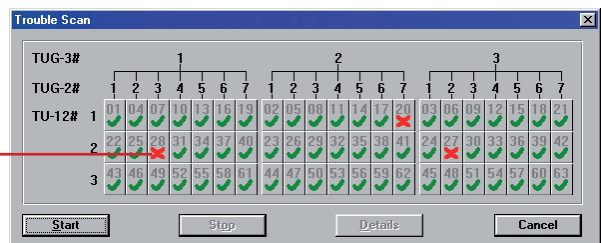
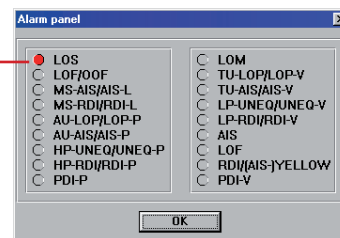
Automatic modes**Autoconfiguration**

The autoconfiguration routine automatically sets the ANT to the input signal. ANT searches at the electrical and optical interfaces for the presence of standard PDH/DSn and STM-N/OC-N signals (G.703, G.707, O.151, O.181, GR-253, ANSI T1.102) and the payload contents in channel 1.

Automatic SCAN function

The SCAN function permits sequential testing of all C11/VT1.5 or C12/VT2 channels via AU-3 or AU-4 in a SDH/SONET signal.

The ANT receiver checks for alarms in the receive signal, the SDH/SONET structure and all channels, and for synchronization of the selected test pattern in all channels. The results (OK/not OK) for each channel are entered in a matrix. The generator runs simultaneously and can be used to stimulate the device under test.

Automatic TROUBLE SCAN function**Trouble scan**

The TROUBLE SCAN function permits sequential testing of all C11/VT1.5 or C12/VT2 channels via AU-3 or AU-4 in a SDH/SONET signal. The ANT receiver checks for alarms in the receive signal, the SDH/SONET structure and all channels. The results (OK/not OK) for each channel are entered in a matrix. A detailed alarm history can be displayed by selecting a channel from the matrix. The alarm status of individual channels can be displayed following the measurement. Only the receive channels are altered during a TROUBLE SCAN.

AutoScan function

This automatic „AutoScan“ function allows you to rapidly check the signal structure, the mapping used and the payload -- even with mixed mapped signals. The ANT receiver analyzes the incoming received signal and provides a clear overview of all the signals present in the composite receive signal. The variable scan depth setting enables even complex signal structures to be resolved and displayed clearly. Even Trace Identifiers are evaluated. All the displayed results can be printed out.

Automatic SEARCH function

Channel shifts in the payload may occur when measuring complex network elements, depending on the configuration of the device under test. The SEARCH function permits rapid automatic location of the test channel (C11/VT1.5 or C12/VT2 with defined PRBS) in the payload of a SDH signal. The ANT receiver checks for alarms in the receive signal, the SDH structure and all channels, and for synchronization of the selected test pattern in all channels. The results (OK/not OK) for each channel are entered in a matrix. An OK result indicates that the corresponding channel contains the signal searched for. Only the receive channels are altered during a SEARCH.

AUTO/Remote

V.24/RS232 remote control interface

Remote control of instrument functions using SCPI command structure

| | |
|-----------|------------|
| Interface | V.24/RS232 |
|-----------|------------|

TCP/IP remote control interface

Remote control of instrument functions using SCPI command structure

| | |
|-----------|----------------------|
| Interface | 10/100 Mb/s Ethernet |
|-----------|----------------------|

LabWindows driver

Simplifies creation of remote-control programs for automated testing using LabWindows. The drivers can be used with the included V.24/RS232 remote control interface and with the option BN 3035/92.10 (GPIB interface).

Optical Interfaces

ANT family provides optical interfaces from STM-0/OC-1 to STM-64/OC-192. This includes SDH and SONET signal generation, error and alarm insertion, and SOH/TOH manipulation.

All the optical interfaces are intended for single-mode fibers. JDSU offers a complete line of optical test adapters. Select one test adapter each for the generator and receiver from the ordering information in this data sheet. All optical interface options include the required number of test adapters.

Optical interfaces 155 Mb/s

(included in all packages except: BN 3060/72 and BN 3060/82)

Optical STM-0/1, OC-1/3, 1310 and 1550 nm

| | |
|--|---------------|
| Bit rate of TX and RX signal | 155520 kb/s |
| Additionally, for STS-1/STM-0 mappings | 51840 kb/s |
| Line code | scrambled NRZ |

Generator

The generator meets the requirements of ITU-T Rec. G.957, tables 2 and 3 (Telcordia GR-253, ANSI T1.105.06).

Classes L1.1, L1.2 and L1.3 (LR-1, LR-2, LR-3) are covered.

Wavelength 1310 and 1550 nm (software switchable in the instrument)

| | |
|--------------|------------------|
| Output level | 0 dBm +2/-3.5 dB |
|--------------|------------------|

Receiver

The receiver meets the specifications of ITU-T Rec. G.957 (Telcordia GR-253, ANSI T1.105.06) and fulfills classes S1.1 and S1.2 (IR-1, IR-2).

| | |
|-------------------|------------------------------------|
| Wavelength range | 1100 to 1580 nm |
| Input sensitivity | -28 to -8 dBm (-34 to -8 dBm typ.) |

Display of optical input level

| | |
|------------|------|
| Resolution | 1 dB |
|------------|------|

155 Mb/s electrical interface for connecting the ANT family to STM-1/STS-3 monitor points

| | |
|---------------------------|---------------|
| Line code | scrambled NRZ |
| Input voltage (peak-peak) | 0.2 to 1 V |

Unbalanced input

| | |
|---------------------|----------|
| Connector/impedance | SMA/50 Ω |
|---------------------|----------|

Optical interfaces 622 Mb/s

(included in all packages except: BN 3035/06, 3060/72 and 3060/82)

Optical STM-0/1/4, OC-1/3/12, 1310 and 1550 nm

| | |
|--|--------------------------|
| Bit rate of TX and RX signal | 155520 kb/s, 622080 kb/s |
| Additionally, for STS-1/STM-0 mappings | 51840 kb/s |
| Line code | scrambled NRZ |

12

Generator

The generator meets the requirements of ITU-T Rec. G.957, Tables 2 and 3 (Telcordia GR-253, ANSI T1.105.06).

Classes L1.1, L1.2, L1.3, L4.1, L4.2 and L4.3 (LR-1, LR-2, LR-3) are covered.

| | |
|--------------|--|
| Wavelength | 1310 and 1550 nm (software switchable in the instrument) |
| Output level | 0 dBm +2/-3.5 dB |

Generation of STM-4 TX signal

The STM-4 TX signal consists of:

- four identical STM-1 tributary signals (AU-4), or
- one internally generated STM-1 tributary signal with the other three tributaries filled with UNEQ.

Generation of OC-12 TX signal

The OC-12 TX signal consists of:

- one internally generated STS-1 tributary signal with the other 11 tributaries filled with UNEQ or
- one internally generated STS-3c tributary signal with the other three tributaries filled with UNEQ.

Contents of the STM-4/OC-12 overhead bytes

For all bytes except B1, B2 and H1 to H3:

The content of each byte is statically programmable or a user defined byte-sequence p in m in n (p frames in m frames and the entire sequence repeated n times) can be inserted.

For the E1, E2, F1 bytes and the DCC channels D1 to D3 and D4 to D12:

Transmission of a test pattern with bit error insertion (see mainframe for pattern selection)

Insertion of an external data signal (via the V.11 interface)

For the K1, K2, N1, N2 bytes:

Insertion of the data signal via the V.11 interface

For the J0 bytes:

Transmission of a 16-byte sequence, with CRC

Error insertion

| | |
|-------------------------|------------------------|
| Error types | B1 and B2 parity error |
| Additionally, for STM-4 | MS-REI |
| for OC-12 | REI-L |

Triggering

| | |
|------------------------------|---|
| Single errors or error ratio | 2×10^{-3} to 1×10^{-10} |
| for B1 parity errors | 2×10^{-4} to 1×10^{-10} |

Burst error: m anomalies in n periods

| | |
|-----------------------------------|--|
| For FAS, B1, B2, B3, REI-L, REI-P | m = 1 to 4.8×10^6 and n = 2 to 8001 frames or 0.2 s to 600 s |
|-----------------------------------|--|

Alarm generation, dynamic

| | |
|-----------------------------------|---------------------------------|
| Alarm types for STM-4 | LOF, MS-AIS, MS-RDI |
| for OC-12 | LOF, AIS-L, RDI-L |
| m alarms in n frames | m = 1 to n-1, nmax = 8000 |
| or | |
| t1 alarm active, t2 alarm passive | t1 = 0 to 60 s, t2 = 0 to 600 s |

Alarm generation, static (on/off)

| | |
|-------------------------|------------------------|
| Alarm types | LOS, LOF |
| Additionally, for STM-4 | MS-AIS, MS-RDI, RS-TIM |
| for OC-12 | AIS-L, RDI-L, TIM-L |
| Insertion on/off | |

Receiver

The receiver meets the specifications of ITU-T Rec. G.957 (Telcordia GR-253, ANSI T1.105.06) and fulfills classes S1.1, S1.2, S4.1, S4.2, L4.1, L4.2 and L4.3 (IR-1, IR-2, LR-1, LR-2, LR-3).

| | |
|---|-----------------|
| Wavelength range | 1100 to 1580 nm |
| Input sensitivity, STM-1/4, OC-1/3/12-8 to -28 dBm (-8 to -34 dBm typ.) | |

Display of optical input level

| | |
|------------|------|
| Resolution | 1 dB |
|------------|------|

The ANT family demultiplexes one selectable STM-1 or STS-3c/STS-1 tributary from the STM-4 or OC-12/OC-3 RX signal and feeds it to the internal processor for evaluation.

Error measurements

| | |
|-------------|--|
| Error types | B1 parity error, B2 parity error of all STM-1/STS-1/STS-3c signals, MS-REI/REI-L |
|-------------|--|

Alarm detection

| | |
|-------------|------------------------|
| Alarm types | LOS, LOF, OOF, LTI |
| for STM-4 | MS-AIS, MS-RDI, RS-TIM |
| for OC-12 | AIS-L, RDI-L, TIM-L |

Overhead evaluation

Display of the complete overhead of a selectable STM-1/STS-1/STS-3c signal

For the E1, E2, F1 bytes and the DCC channels D1 to D3 and D4 to D12:

BERT using a test pattern from the generator

Output of the data signal via the V.11 interface

For the K1, K2, N1, N2 bytes:

Data signal output via the V.11 interface

For the J0 byte:

Display of 15-byte sequences in ASCII.

155/622 Mb/s electrical interface

For connecting the ANT family to STM-1/OC-3 and STM-4/OC-12 monitor points

| | |
|---------------------------|---------------|
| Line code | scrambled NRZ |
| Input voltage (peak-peak) | 0.2 to 1 V |

Coaxial input

| | |
|---------------------|-----------------|
| Connector/impedance | SMA/50 Ω |
|---------------------|-----------------|

Concatenated mapping OC-12c/STM-4cBERT

Contiguous concatenation signal structure to ANSI T1.105.02 and G.707.

Error measurement to O.150

| | |
|--------------|--|
| Test pattern | PRBS-31, IPRBS-31, PRBS-23, IPRBS-23, PRBS-20, PRBS-15, IPRBS-15 |
|--------------|--|

Programmable word:

| | |
|--------|---------|
| Length | 16 bits |
|--------|---------|

Error insertion:

| | |
|---|--|
| Bit errors in test pattern, single error or error ratio | 1×10^{-2} to 1×10^{-9} |
|---|--|

Error measurement and alarm detection:

Bit errors and AIS in test pattern

Optical interfaces 2.5 Gb/s

(included in packages: BN 3035/57, 3035/58, 3060/71, 3060/74, 3060/81 and 3060/84)

The optical interfaces meet the specifications of ITU-T Recommendation G.957 (Table 4) and Telcordia TA-NWT-000253 L6 (Table 4-9, 4-10). Classes S-16.2, L-16.2, L-16.3 (ITU-T) or IR-2, LR-2, LR-3 (Telcordia) are fulfilled at 1550 nm; classes S-16.1, L-16.1 (G.957) or IR-1, LR-1 (Telcordia) are fulfilled at 1310 nm.

Generator**Optical interfaces**

| | |
|-------------------------------------|----------------------------------|
| Wavelengths | 1310/1550 nm software switchable |
| Output level at 1310 nm and 1550 nm | 0 dBm +0/-2 dB |
| Line code | scrambled NRZ |

Electrical interfaces

| | |
|----------------------------|-----------------|
| Line code | scrambled NRZ |
| Output voltage (peak-peak) | ≥ 0.6 V |
| Connector/impedance | SMA/50 Ω |

Clock generator

| | |
|--------------------|--------------|
| Internal, accuracy | ± 2 ppm |
| Offset | ± 50 ppm |

Synchronization from external signal as for mainframe

Generation of STM-16 TX signal

In instruments with STM-1 mappings

The STM-16 signal consists of one or more internally generated tributaries plus several tributaries filled with UNEQ (or non-specific UNEQ)

- 16 identical STM-1
- One STM-1 tributary and 15 x UNEQ/non specific
- 4 identical STM-4c
- One STM-4c tributary and 3 x UNEQ/non specific

Generation of OC-48 TX signal

In instruments with STS-1/STS-3c mappings

The OC-48 signal consists of one or more internally generated tributaries plus several tributaries filled with UNEQ (or non-specific UNEQ)

- 48 identical STS-1
- One STS-1 tributary and 47 x UNEQ/non specific
- 16 identical STS-3c
- One STS-3c tributary and 15 x UNEQ/non specific
- 4 identical STS-12c
- One STS-12c tributary and 3 x UNEQ/non specific

Contents of STM-16/OC-48 overhead bytes

For all bytes except B1, B2 and H1 through to H3:

The contents of the bytes in all SOH/TOH are statically programmable

For the bytes E1, E2, F1 and the DCC channels D1 to D3 and D4 to D12: Transmission of a test pattern and bit error insertion (see mainframe for pattern selection)

Insertion of an externally-generated data signal (via V.11 interface)

For the K1, K2, N1, N2 bytes:

Insertion of an external data signal via the V.11 interface

For the J0 byte:

Transmission of a 16-bit sequence with CRC

Error insertion

| | |
|-------------------------------|---|
| Error types | B1, B2 parity errors |
| Single error or error rate B1 | 1×10^{-10} to 2×10^{-5} |
| B2 | 1×10^{-10} to 2×10^{-3} |
| Additionally, for STM-16 | MS-REI |
| for OC-48 | REI-L |
| Single error or error rate | 1×10^{-10} to 2×10^{-3} |

Alarm generation, dynamic

| | |
|-----------------------------------|--|
| Alarm types for STM-16 | LOF, MS-AIS, MS-RDI |
| for OC-48 | LOF, AIS-L, RDI-L |
| m alarms in n frames | $m = 1$ to $n-1$, $n_{\max} = 8000$ |
| or | |
| t1 alarm active, t2 alarm passive | $t1 = 0$ to 60 s, $t2 = 0$ to 600 s |

Alarm generation, static (on/off)

| | |
|--------------------------|----------------|
| Alarm types | LOS, LOF |
| Additionally, for STM-16 | MS-AIS, MS-RDI |
| for OC-48 | AIS-L, RDI-L |

Receiver**Optical interfaces**

| | |
|----------------|-----------------|
| Wavelength | 1260 to 1580 nm |
| Line code | scrambled NRZ |
| Sensitivity | -28 to -8 dBm |
| Input overload | >-8 dBm |

Display of optical input level

| | |
|------------|---------------|
| Range | -30 to -8 dBm |
| Resolution | 1 dB |

Electrical interfaces

| | |
|---|-----------------|
| Line code | scrambled NRZ |
| Input voltage (peak-peak) | 0.3 to 1 V |
| Connector/impedance | SMA/50 Ω |
| A selectable STM-1, STS-1 or STS-3c channel is fed to the internal evaluation circuits by demultiplexing from the input signal. | |

Error measurement

| | |
|-------------------------------|---|
| Error types | B1 parity error, MS-REI, B2 parity sum error over all STM-1/STS-1/STS-3c channels |
| Evaluation (bit/block errors) | error rate, count |
| Error event resolution | 1 s |

Alarm detection

| | |
|------------------------------------|---|
| Alarm types | LOS, LOF, OOF |
| Additionally, for STM-16 for OC-48 | MS-AIS, MS-RDI, RS-TIM AIS-L, RDI-L, TIM-L |
| Alarm event resolution | 100 ms |

SOH/TOH evaluation

Display of complete overhead

For the bytes E1, E2, F1 and the DCC channels D1 to D3 and D4 to D12:
BERT using test pattern from generator
Output of the data signal via the V.11 interface

For the K1, K2, N1, N2 bytes:

Data signal output via the V.11 interface

For the J0 byte:

Display of 15-byte sequences in ASCII format

Concatenated mapping OC-48c/STM-16c BERT

Contiguous concatenation signal structure to ANSI T1.105.02 and G.707.

Error measurement to O.150

| | |
|--------------|--------------------------------------|
| Test pattern | PRBS-31, IPRBS-31, PRBS-23, IPRBS-23 |
|--------------|--------------------------------------|

Programmable word

| | |
|--------|---------|
| Length | 16 bits |
|--------|---------|

Error insertion

Bit errors in test pattern, single error or error ratio 1×10^{-3} to 1×10^{-9}

Alarm generation

AU-AIS, AIS-C1...AIS-C16, AU-LOP, LOP-C1...LOP-C16

Error measurement and alarm detection

AU-AIS, AU-LOP

Bit errors

Automatic protection switching

Sensor: MS-AIS, AU-AIS

Optical interfaces 10 Gb/s

(included in all ANT-10G packages: BN 3060/71, 3060/72, 3060/73, 3060/74, 3060/81, 3060/82, 3060/83 and 3060/84)

Generator STM-64

The transmitter of the optical interface meets the specification of ITU-T G.691 (Table 5A, 5B) Application code: S-64.2b, S-64.3b, S-64.5b and I-64.2r, I-64.2, I-64.3, I-64.5, S-64.3a, S-64.5a with additional optical attenuator 1 to 3 dB and Telcordia GR-1377 (Table 4-4, 4-5, 4-6)

Parameter: SR-2, LR-2 (a and c), IR-2, IR-3

Optical interface

| | |
|-------------------------|------------------------------------|
| Wavelengths | 1550 nm or 1310/1550 nm switchable |
| Output level at 1310 nm | 0 dBm \pm 1 dB |
| Output level at 1550 nm | 0 dBm \pm 1 dB |
| Line code | scrambled NRZ |

Clock generator

| | |
|--------------------|--------------|
| Internal, accuracy | \pm 2 ppm |
| Offset | \pm 50 ppm |

Synchronization from external signal

Generation of STM-64 signal

compliant to ITU-T G.707

One test channel STM-1 with standard mappings or STM-4c bulk or STM-16c bulk, others unequipped or same as test channel

Additionally generation of OC-192 signal compliant to GR-253 one test channel STS-3c or STS-12c or STS-48c SPE BERT, others unequipped or same as test channel

Contents of STM-64 overhead bytes

| | |
|--|---------------------------------|
| For all bytes except B1, B2, H1 to H3 | statically programmable |
| For bytes E1, E2, F1, D1 to D3 and D4 to D12 | test pattern |
| | external data via V.11 |
| For bytes K1, K2 | external data via V.11 |
| For J0 byte | 16 byte sequence ASCII with CRC |

Byte sequence

m in n in p for bytes of first 16 STM-1 SOH m times (1 to 200 000 000) byte A followed by n times (1 to 2 000 000 000) byte B sequence repetition p (1 to 65 000)

Error insertion

| | |
|--|--|
| Error types B1, B2, MS-REI | single and rate |
| Burst errors: m anomalies in n periods | m = 1 to 4.8×10^6 and n = 2 to 8001 frames or 0.2 s to 600 s |

Alarm generation**Alarm types**

| | |
|----------------------------------|--------|
| LOS, LOF, MS-AIS, MS-RDI, RS-TIM | on/off |
| Dynamic alarms | |

m alarms in n frames LOF, MS-AIS, MS-RDI m = 1 to n - 1, nmax = 8000 or active = 0 to 60 s, passive = 0 to 600 s

Frame trigger [100]

| | |
|-------------------------------|-------------------------|
| Output voltage (open circuit) | CMOS |
| Connector/impedance | BNC/approx. 50 Ω |

Analyzer STM-64

The receiver of the optical interface meets the specification of Telcordia GR-1377 (Table 4-4, 4-5) Parameter: SR-2, IR-2, IR-3 and ITU-T G.691 (Table 5A, 5B) Application code: S-64.2b, S-64.3b, S-64.5b, I-64.2r, I-64.2, I-64.3, I-64.5

Optical interface

| | |
|------------------------|-------------------------------------|
| Wavelengths | 1260 to 1360 nm and 1520 to 1580 nm |
| Sensitivity at 1310 nm | -12 to 0 dBm |
| Sensitivity at 1550 nm | -15 to 0 dBm |
| Line code | scrambled NRZ |
| Offset range | ± 500 ppm |

Demultiplexing of STM-64 signal

compliant to ITU-T G.707

Evaluation of one selectable channel STM-1 down to the mapped tributary or STM-4c SPE or STM-16c.

Additionally demultiplexing of OC-192 signal compliant to Telcordia GR-253.

Evaluation to one selectable channel STM-4c or STM-16c.

Concatenated mappings OC-192c/STM-64c BERT

Contiguous concatenation signal structure to ANSI T1.105.02 and G.707.

Error measurement to O.150

| | |
|--------------|-------------------|
| Test pattern | PRBS-31, IPRBS-31 |
|--------------|-------------------|

Programmable word

| | |
|--------|---------|
| Length | 16 bits |
|--------|---------|

Error insertion

| | |
|---|--|
| Bit errors in test pattern, single error or error ratio | 1×10^{-3} to 1×10^{-9} |
| Alarm generation | AU-AIS, AU-LOP |

Error measurement and alarm detection

AU-AIS, AU-LOP

Bit errors

Option electrical interfaces at 9953 Mb/s

(option to be ordered for ANT-10G only and only at initial purchase, upgrade later on not possible)

Electrical interfaces at 10 Gb/s for 1550 nm packages BN 3060/91.48

Electrical interfaces at 10 Gb/s for dual wavelength packages BN 3060/91.54

This option must be ordered with the mainframe as a subsequent upgrade is not possible.

Generator

| | |
|--------------------------|-----------------|
| Output level (peak-peak) | 400 to 600 mV |
| Connector/impedance | SMA/50 Ω |

Receiver

| | |
|-------------------------|-----------------|
| Input level (peak-peak) | 100 to 600 mV |
| Connector/impedance | SMA/50 Ω |

Clock

| | |
|-----------------------------|-----------------|
| Frequency | 9953.28 MHz |
| Tx output level (peak-peak) | ≥ 450 mV |
| Rx output level (peak-peak) | ≥ 470 mV |
| Connector/impedance | SMA/50 Ω |

Jitter and Wander Options

The Jitter/Wander modules are optimized for compliance with the latest standard (O.172) and assure reliable jitter and wander measurements, useful when analyzing pointer jitter in up to 10 Gb/s systems, for example. ANT-10G is particularly adept at wander analysis. The graphical MTIE wander analysis requires no external computing resources and allows rapid verification of the synchronicity of a SDH network. Jitter/wander components are available for all built-in bit rates.

Standards

Jitter generation and jitter/wander analysis are in accordance with:

Telcordia GR-253, GR-499, GR-1244

ANSI T1.101, T1.102, T1.105.03, T1.403, T1.404, T1.105.09

ITU-T G.783, G.823, G.824, G.825, O.171, O.172

ETSI ETS 300 462-1 to -6, ETS 300 417-1-1, EN 302 084

| Clock rate/kHz | A1 | A2 | f1/Hz | f2/Hz | f3/kHz |
|----------------|-----|-----|-------|-------|--------|
| 1 544 | 0.5 | 64 | 0.1 | 625 | 80 |
| 2 048 | | | | 1560 | 200 |
| 6 312 | | | | 940 | 120 |
| 8 448 | | | | 6250 | 800 |
| 34 368 | | | | 27 k | 3 500 |
| 44 736 | | | | 35 k | 4 500 |
| 51 840 | | | | 27 k | 3 500 |
| 139 264 | | | | 39 k | 5 000 |
| 155 520 | | | | 39 k | 5 000 |
| 622 080* | 1.0 | 256 | | 20 k | 5 000 |

* Requires option BN 3035/91.31

Option O.172 Jitter/Wander up to 155 Mb/s

(options only for ANT-20 and ANT-20se) BN 3035/91.29 (included in the ANT-10G packages: BN 3060/72, 3060/73, 3060/82 and 3060/83)

Jitter generator

Fully complies with or exceeds the requirements of ITU-T O.172.

Bit rates

Generates jitter at all bit rates included in the mainframe configuration up to 155520 kb/s.

| | |
|---|--|
| TX signals | all test patterns and frame structures included in the mainframe configuration |
| Built-in modulation generator (sine wave) | 0.1 Hz to 5 MHz |
| External modulation | 0 Hz to 5 MHz |
| Jitter amplitude | up to 64 UI |

Modulator input

| | |
|--------------------------|--------------|
| 75 Ω , BNC socket | |
| Voltage required | 0 to 2 Vpp |
| Error limits | as per O.172 |

Jitter analyzer

Jitter measurement at all bit rates included in the mainframe configuration up to 155520 kb/s.

Built-in filters

| | |
|------------------------|--|
| High-pass filters | 0.1, 2, 4, 10, 20, 40, 100, 200, 400, 500, 700 Hz, 1, 3, 8, 10, 12, 18, 20, 30, 65, 80, 250 kHz |
| Low-pass filters | 40, 60, 100, 400, 800, 1300, 3500, 5000 kHz |
| Filter characteristics | as per O.172 |

Measurement ranges

Peak-peak

| | |
|-----------------------|--------------------------|
| Range I, Resolution | 0 to 1.6 UIpp, 1 mUIpp |
| Range II, Resolution | 0 to 20 UIpp, 10 mUIpp |
| Range III, Resolution | 0 to 200 UIpp, 100 mUIpp |

RMS

| | |
|-----------------------|--------------------------|
| Range I, Resolution | 0 to 0.8 UIpp, 1 mUIpp |
| Range II, Resolution | 0 to 10 UIpp, 10 mUIpp |
| Range III, Resolution | 0 to 100 UIpp, 100 mUIpp |
| Measurement accuracy | as per O.172 |

Demodulator output

75 Ω , BNC socket

| | |
|---------------------------|-------------|
| Range I (0 to 1.6 UIpp) | 1 V/UIpp |
| Range II (0 to 20 UIpp) | 0.1 V/UIpp |
| Range III (0 to 200 UIpp) | 0.01 V/UIpp |

Wander generator

Fully complies with or exceeds the requirements of ITU-T O.172

Bit rates

Wander generation at all implemented bit rates up to 155 Mb/s according to the equipment level of the instrument.

| | |
|-----------------|----------------------|
| Amplitude range | up to 200000 UI |
| Frequency range | 10 μ Hz to 10 Hz |
| Accuracy | as per O.172 |
| Resolution | 1 μ Hz |

Wander analyzer

Fully complies with or exceeds the requirements of ITU-T O.172

For all bit rates up to 155 Mb/s according to the equipment level of the instrument.

Other sampling rates in addition to the 30/s rate are available for detailed analysis versus time:

| | |
|--|--|
| Sampling rate -- low-pass filter -- test duration | 1/s - 0.1 Hz - 99 days; 30/s - 10 Hz - 99 h 60/s - 20 Hz - 99 h; 300/s - 100 Hz - 5000 s |
| Amplitude range | ± 1 ns to ± 1 μ s |
| Measurement accuracy | as per O.172 |
| Accessory: "Standard Frequency Source" for wander applications, see end of chapter | |

Option O.172 Jitter/Wander at 622 Mb/s

(options only for ANT-20 and ANT-20se) BN 3035/91.31 (included in the ANT-10G packages: BN 3060/72, 3060/73, 3060/82 and 3060/83)

Jitter generator

Jitter modulation of STM-4 TX signals.

| | |
|---|-----------------|
| Built-in modulation generator (sine wave) | 0.1 Hz to 5 MHz |
| External modulation | 0 Hz to 5 MHz |
| Jitter amplitude | up to 256 UI |

Jitter modulation of externally-generated signals in through mode

Externally-generated signals can be jittered in Through mode when the D&I option is included.

This applies to all bit rates included in the mainframe configuration at the appropriate electrical and optical interfaces.

| | |
|---|---------------------------------|
| Built-in modulation generator (sine wave) | 0.1 Hz to 5 MHz |
| External modulation | 0 Hz to 5 MHz |
| Jitter amplitude | as for jitter generator in UIpp |

Jitter analyzer

Measurement range

Peak-peak

| | |
|-----------------------|--------------------------|
| Range I, Resolution | 0 to 6.4 UIpp, 1 mUIpp |
| Range II, Resolution | 0 to 80 UIpp, 10 mUIpp |
| Range III, Resolution | 0 to 800 UIpp, 100 mUIpp |

RMS

| | |
|-----------------------|--------------------------|
| Range I, Resolution | 0 to 3.2 UIpp, 1 mUIpp |
| Range II, Resolution | 0 to 40 UIpp, 10 mUIpp |
| Range III, Resolution | 0 to 400 UIpp, 100 mUIpp |
| Measurement accuracy | as per O.172 |

Demodulator output

75 Ω, BNC socket

| | |
|---------------------------|---------------|
| Range I (0 to 6.4 UIpp) | 0.25 V/UIpp |
| Range II (0 to 80 UIpp) | 0.025 V/UIpp |
| Range III (0 to 800 UIpp) | 0.0025 V/UIpp |

Wander generator

Fully complies with or exceeds the requirements of ITU-T O.172.

Bit rates

Wander generation at all implemented bit rates up to 622 Mb/s according to the equipment level of the instrument.

| | |
|-----------------|-----------------|
| Amplitude range | up to 200000 UI |
| Frequency range | 10 μHz to 10 Hz |
| Accuracy | as per O.172 |
| Resolution | 1 μHz |

Wander analyzer

Fully complies with or exceeds the requirements of ITU-T O.172.

Other sampling rates in addition to the 30/s rate are available for detailed analysis versus time:

| | |
|---|--|
| Sampling rate -- low-pass filter -- test duration | 1/s - 0.1 Hz - 99 days; 30/s - 10 Hz - 99 h 60/s - 20 Hz - 99 h; 300/s - 100 Hz - 5000 s |
| Amplitude range | ± 1 ns to ± 1 ms |
| Measurement accuracy | as per O.172 |

Reference signal input

| | |
|---|-------------------------|
| Frequencies | 1.544, 2.048, 5, 10 MHz |
| Bit rates | 1.544, 2.048 Mb/s |
| Balanced 110 Ω connector | Bantam |
| Clock input voltage (sine or square wave) | 1.0 to 6.5 Vpp |
| HDB3/B8ZS input voltage | ± 3 V ± 10% |
| Coaxial 75 Ω connector | BNC |

Clock input voltage

| | |
|-------------------------|----------------|
| (sine or square wave) | 1.0 to 5 Vpp |
| HDB3/B8ZS input voltage | ± 2.37 V ± 10% |

Accessory: "Standard Frequency Source" for wander applications, see end of chapter

Option O.172 Jitter/Wander at 2488 Mb/s

(options only for ANT-20se) BN 3035/91.32

Jitter generator

Fully complies with or exceeds the requirements of ITU-T O.172.

| | |
|--|--------------|
| Bit rate | 2488320 kb/s |
| Generator signal test patterns, frame structures, depend on instrument configuration | |

| | |
|---|------------------|
| Built-in modulation generator sine wave or external | 0.1 Hz to 20 MHz |
| Jitter amplitude | up to 800 UI |

| Bit rate/kHz | A1/ UIpp | A2/ UIpp | A3/ UIpp | A4/ UIpp | f0/Hz | f1/Hz | f2/Hz | f3/Hz | f4/Hz |
|---------------------|-------------|-------------|-------------|-------------|-------|-------|-------|-------|-------|
| 2488320 ANT-20se | 0.008 | 0.75 | 20 | 800 | 0.1 | 12.1 | 500 | 750 k | 20 M |

Modulator input

75 Ω, BNC socket

| | |
|-----------------------------|--------------------|
| Modulation frequency | 0.1 Hz to 20 MHz |
| Required sinusoidal voltage | 0 to 2.0 Vpp |
| Error limits | as per ITU-T O.172 |

Jitter modulation of external signals in through mode

In Through mode, jitter can be superimposed on an external 2488 Mb/s signal in conjunction with the D&I option.

Internal and external modulation, jitter amplitude see jitter generator

Jitter analyzer

| | |
|----------|--------------|
| Bit rate | 2488320 kb/s |
|----------|--------------|

Measurement ranges

| | |
|----------------------|------------------------|
| Range I, Resolution | 0 to 2 UIpp, 1 mUIpp |
| Range II, Resolution | 0 to 32 UIpp, 10 mUIpp |
| Range I, Resolution | 0 to 1.0 UIpp, 1 mUIpp |
| Range II, Resolution | 0 to 16 UIpp, 10 mUIpp |

Built-in filters

as per ITU-T O.172, G.825, G.813, Telcordia GR-253, ANSI T1.105.03

| | |
|-------------------|----------------------|
| High-pass filters | 5 kHz, 12 kHz, 1 MHz |
| Low-pass filters | 20 MHz |

The high-pass filters can be switched off.

Frequency range without high-pass filter

| | |
|----------------------|---------------------|
| Measurement range I | 80 Hz |
| Measurement range II | 10 Hz |
| Measuring modes | see jitter analysis |

Demodulator output75 Ω , BNC socket**Output voltage**

| | |
|-------------------------------------|--|
| Measurement range I (0 to 2 UIpp) | 1 V/UIpp |
| Measurement range II (0 to 32 UIpp) | 62.5 mV/UIpp |
| Automatic tests | like jitter meter up to 622 Mb/s |
| Tolerance masks at | |
| MTJ/F-MTJ | ITU-T G.825 (ANSI T1.105.03 and Telcordia GR-253) |
| JTF | ITU-T G.958 (Telcordia GR-253 and ANSI T1.105.03 type A) |

Wander generator

Fully complies with or exceeds the requirements of ITU-T O.172.

| | |
|-----------------|----------------------|
| Amplitude range | up to 200000 UI |
| Frequency range | 10 μ Hz to 10 Hz |
| Accuracy | as per O.172 |
| Resolution | 1 μ Hz |

Wander analyzer

Other sampling rates in addition to the 30/s rate are available for detailed analysis versus time:

| | |
|---|--|
| Sampling rate – low-pass filter – test duration | 1/s - 0.1 Hz - 99 days; 30/s - 10 Hz - 99 h 60/s - 20 Hz - 99 h; 300/s - 100 Hz - 5000 s |
| Amplitude range | ± 1 ns to ± 106 s |
| Measurement accuracy | as per O.172 |

Evaluation capabilities

See wander analysis.

Reference signal input75 Ω , BNC socket

| | |
|--|-----------------------|
| Frequencies | 1544, 2048, 5, 10 MHz |
| Input voltage | 0.5 to 5 Vpp |
| Input signal monitoring (loss of timing input) | LTI |
| Accessory: "Standard Frequency Source" for wander applications, see end of chapter | |

O.172 Jitter/Wander at 9953 Mb/s

(included in the ANT-10G packages: BN 3060/72, 3060/73, 3060/82 and 3060/83, below specs without the wander generator also included in the ANT-10G packages: BN 3060/74 and BN 3060/84)

Jitter generator

Fully complies with or exceeds the requirements of ITU-T O.172.

| | |
|---|------------------|
| Bit rate | 9953280 kb/s |
| Maximum offset | ± 50 ppm |
| Built-in modulation generator sine wave or external | 0.1 Hz to 80 MHz |
| Jitter amplitude | up to 3200 UIpp |

| Amplitude in UIpp | | | Frequency in Hz | | | | |
|-------------------|----|------|-----------------|------|-----|-----|------|
| A1 | A2 | A3 | f1 | f2 | f3 | f4 | f5 |
| 0.5 | 20 | 3200 | 0.1 | 12.5 | 2 k | 2 M | 80 M |

Modulator input75 Ω , BNC socket

| | |
|----------------------|--------------------|
| Modulation frequency | 0.1 Hz to 80 MHz |
| Input voltage range | 0 to 2.0 Vpp |
| Error limits | as per ITU-T O.172 |

Jitter analyzer

| | |
|----------|--------------|
| Bit rate | 9953280 kb/s |
|----------|--------------|

Measurement ranges**Peak-peak**

| | |
|-----------------------|---------------------------|
| Range I, Resolution | 0 to 4 UIpp, 1 mUIpp |
| Range II, Resolution | 0 to 40 UIpp, 10 mUIpp |
| Range III, Resolution | 0 to 3200 UIpp, 100 mUIpp |

RMS

| | |
|-----------------------|---------------------------|
| Range I, Resolution | 0 to 2 UIpp, 1 mUIpp |
| Range II, Resolution | 0 to 20 UIpp, 10 mUIpp |
| Range III, Resolution | 0 to 1600 UIpp, 100 mUIpp |
| Measurement accuracy | as per O.172 |

Built-in filters

as per ITU-T O.172, G.825, G.813, Telcordia GR-1377, ANSI T1.101, T1.105.03

| | |
|-------------------|--|
| High-pass filters | 10 kHz, 12 kHz, 20 kHz, 50 kHz and 4 MHz |
| Low-pass filters | 10 kHz, 80 MHz |

The high-pass filters can be switched off.

Frequency range without high-pass filter

| | |
|-----------------------|--------|
| Measurement range I | 100 Hz |
| Measurement range II | 10 Hz |
| Measurement range III | 10 Hz |

Demodulator output75 Ω , BNC socket**Output voltage**

| | |
|--|---------------|
| Measurement range I (0 to 4 UIpp) | 0.5 V/UIpp |
| Measurement range II (0 to 40 UIpp) | 50 mV/UIpp |
| Measurement range III (0 to 3200 UIpp) | 0.625 mV/UIpp |

Wander generator

Fully complies with or exceeds the requirements of ITU-T O.172.

| | |
|-----------------|----------------------|
| Bit rate | 9953280 kb/s |
| Amplitude range | 0.1 UI to 320000 UI |
| Frequency range | 10 μ Hz to 10 Hz |
| Accuracy | as per O.172 |
| Resolution | 1 μ Hz |

Wander analyzer

Fully complies with or exceeds the requirements of ITU-T O.172

Other sampling rates in addition to the 30/s rate are available for detailed analysis versus time:

| | |
|---|--|
| Sampling rate -- low-pass filter -- test duration | 1/s - 0.1 Hz - 99 days; 30/s - 10 Hz - 99 h 60/s - 20 Hz - 99 h; 300/s - 100 Hz - 5000 s |
| Amplitude range | ± 1 ns to ± 1 μ s |
| Measurement accuracy | as per O.172 |

19

Reference signal input

| | |
|-------------|-------------------------|
| Frequencies | 1.544, 2.048, 5, 10 MHz |
| Bit rates | 1.544, 2.048 Mb/s |

Balanced 110Ω connector

| | |
|---|---------------------------|
| Clock input voltage (sine or square wave) | 0.65 to 6.5 Vpp |
| HDB3/B8ZS input voltage 3 | $\pm 3\text{ V} \pm 10\%$ |

Coaxial 75Ω connector

| | |
|---|------------------------------|
| Clock input voltage (sine or square wave) | 0.5 to 5 Vpp |
| HDB3/B8ZS input voltage | $\pm 2.37\text{ V} \pm 10\%$ |

For “Standard Frequency Source” accessory for wander applications, see end of section.

Jitter and Wander measurement modes**Jitter analysis**

Current values (continuous measurement)

| | |
|---------------------|---------|
| Peak jitter value | in UIpp |
| Positive peak value | in UI+p |
| Negative peak value | in UI-p |

Maximum value (gated measurement)

| | |
|-------------------------------|----------|
| Maximum peak jitter value | in UIpp |
| Maximum positive peak value | in UI+p |
| Maximum negative peak value | in UI-p |
| Result averaging (switchable) | 1 to 5 s |

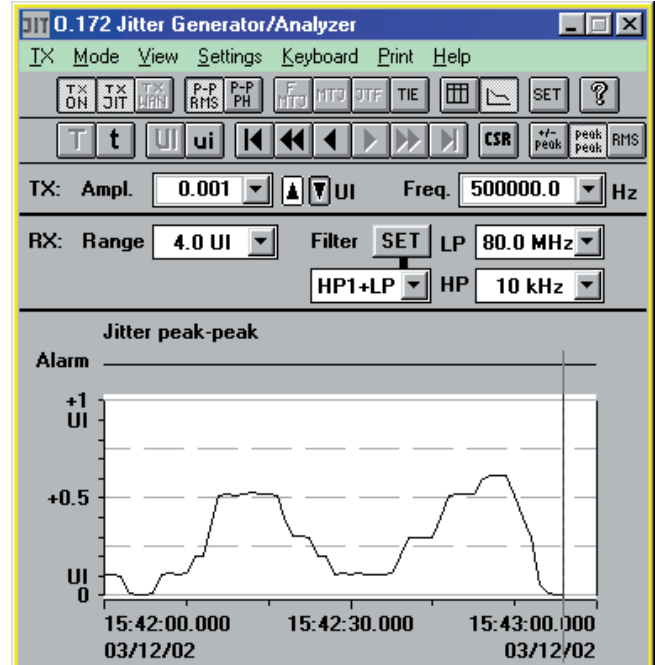
The ANT-10G retains phase synchronicity even when pointer jitter occurs (phase tolerance to O.172).

Phase hits

The instrument detects when the programmable threshold for positive and negative jitter values is exceeded.

The result indicates how often this threshold was exceeded.

Setting range for positive and negative thresholds (depending on measurement range) 0.1 up to the half measurement range

Jitter versus time

Jitter versus time display

This function is used to record variations of jitter with time.

It allows the positive and negative peak values or peak-to-peak values to be displayed versus time.

Measured values have one second resolution. Measurement duration is up to 99 days. By simultaneously evaluating alarms and errors, correlations between events can be quickly identified.

Clock jitter measurement

The ANT-10G can also measure the jitter on the clock signals (square-wave) at standard bit rates. All built-in bit rates with electrical interfaces up to 155 Mb/s can be measured (requires option BN 3060/91.30) or BN 3060/91.31).

RMS measurement

T1.105.03, GR-253, GR-499, G.958 (or G.783 rev.)

The RMS value is measured on-line and displayed in UI. The peak jitter and RMS values can be displayed simultaneously; a graph versus time is available for long-term analysis. An RMS filter preset is available.

Wander analysis

Time interval error (TIE)

To O.172 numerical and graphical
Sampling rates please see under O.172 Wander Analyzer
MTIE is additionally determined as a continually updated numerical value.

To prevent data loss or premature termination of long term measurements, the ANT-10G checks the remaining space on the hard disk before the start of the measurement. If necessary, the selected measurement time can be adjusted.

The TIE values are recorded and are then available for subsequent off-line MTIE/TDEV evaluations. The values are also saved in .csv format for documentation or further analysis.

MTIE/TDEV off-line analysis evaluation

This software provides extended off-line statistical analysis facilities for the results of wander measurements.

TIE values results obtained using the ANT-10G are analyzed according to ANSI T1.101, Telcordia GR-1244, ETSI ETS 300 462, EN 302 084, ITU-T O.172, G.810 to G.813.

Network synchronization quality is presented graphically using the MTIE (Maximum Time Interval Error) and TDEV (Time DEVIation) parameters. To ensure correct assessment, the tolerance masks for PRC (Primary Reference Clock), SSU (Synchronization Supply Unit), SEC (Synchronous Equipment Clock) or PDH can be superimposed.

The results and masks can be printed out with additional user-defined comments.

This software allows several TIE results to be displayed simultaneously.

Decisive details during long term measurements disappear in the multitude of results. An effective zoom function is available for detailed wander characteristic analysis.

Result printout and export

The results can be printed out and stored internally or on floppy disk. The file format allows further processing using standard PC software.

Frequency offset and frequency drift rate (ANSI T1.101)

To ensure reliable operation when a clock source is in holdover mode, the frequency characteristics must not exceed specific deviation limits relative to an absolute reference source. To verify this data, the ANT-10G determines the following over the selected measurement interval:

| | |
|----------------------|----------|
| Frequency offset | in ppm |
| Frequency drift rate | in ppm/s |

MRTIE–Relative MTIE (G.823 and EN 302 084)

If the reference is unavailable (too far away) when analyzing the wander of asynchronous signals, the MTIE analysis may have a superimposed frequency offset. This offset depends on the difference between the signal and local reference clocks. The MRTIE measurement subtracts the frequency offset from the result so that the „actual“ wander characteristic is shown.

Accessory for wander analysis

Standard frequency source please see end of chapter.

Automatic measurements

The following automatic measurements can be run for all standard bit rates and interfaces included in the mainframe configuration (electrical/optical) up to 10 Gb/s.

Automatic determination of selective Jitter transfer function (JTF)

Telcordia GR-499, GR-253, ANSI T1.105.03, ITU-T G.958

The Jitter transfer function indicates the ratio of the jitter amplitude at the output of the device under test to that at the input at various frequencies.

This determines whether the device under test reduces or amplifies input jitter and at which frequencies. After a calibration measurement to minimize intrinsic errors, the ANT-10G outputs a pre-selected jitter amplitude at various frequencies and measures selectively the jitter amplitude at the output of the device under test. The ratio of the amplitudes in dB is the Jitter Transfer Function. The pre-selected amplitudes correspond to the mask for maximum permitted input jitter. The jitter frequencies and amplitudes can also be edited. The calibration values can be saved and used again for other measurements.

Additional measurement mode

Transfer MTJ results:

An MTJ measurement is first performed. The measured amplitude values can then be used automatically as generator values for the JTF measurement.

The results can be displayed in tabular and graphical form.

The graphical display includes the standard tolerance masks specified in T1.105.03 and GR-253 or G.735 to G.739, G.751, G.758. The distance of the measurement points from the tolerance masks indicates the degree to which the device under test meets the requirements of the standard.

Tolerance mask violations during the measurement are indicated in the numerical table.

Freely programmable tolerance masks

The existing tolerance masks for the ANT-10G can be altered as required to suit requirements that do not conform to specific standards. The new values selected for jitter frequency and jitter gain/loss are stored when the application is saved.

Automatic limit testing of maximum tolerable jitter (Fast Maximum Tolerable Jitter, F-MTJ)

ANSI T1.403, T1.404, T1.105.03, Telcordia GR-253, GR-499, ITU-T G.823, G.824, G.825, G.958

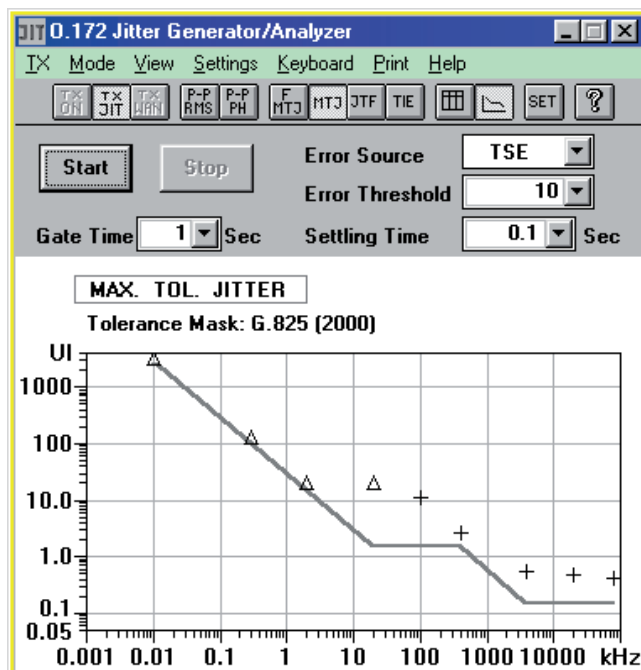
This extremely fast measurement tests the device under test for conformance to the standard tolerance mask limits for maximum tolerable jitter.

| | |
|--------------------|---|
| Jitter frequencies | up to 10 fixed frequencies corresponding to standard tolerance mask |
| Detection criteria | TSE (bit error), code error, B2, B3, REI, RDI |
| Error threshold | 0 to 999,999 errors |
| Settling time | 0.1 to 99.9 s |

The editable frequency/amplitude values are set sequentially and the test pattern monitored for the permitted bit error count by the receiver.

The result of each measurement is shown in a table as the status message "OK" or "FAILED".

Automatic determination of maximum tolerable Jitter (MTJ)



Maximum tolerable jitter testing

ANSI T1.403, T1.404, T1.105.03, Telcordia GR-253, GR-499, ITU-T G.823, G.824, G.825, G.958

The ANT-10G automatically determines the maximum jitter amplitude tolerated by the device under test at each jitter frequency.

| | |
|--------------------|---|
| Jitter frequencies | 20 freely selectable frequencies |
| Detection criteria | TSE (bit error), code error, B2, B3, REI, RDI |
| Error threshold | 0 to 999999 errors |
| Settling time | 0.1 to 99.9 s |
| Gating time | 1 to 999 s |

The maximum permissible jitter amplitude is determined precisely and quickly using a successive method.

The ANT-10G determines the exact limit value.

The method is derived from long experience in the performance of jitter tolerance tests and is recognized by leading systems manufacturers.

The frequency/amplitude result pairs can be displayed in tabular and graphical form.

The graphical display includes the standard tolerance masks. The distance of the measurement points from the tolerance masks indicates the degree to which the device under test meets the requirements of the standard.

Tolerance mask violations during the measurement are indicated in the numerical table.

Freely programmable tolerance masks

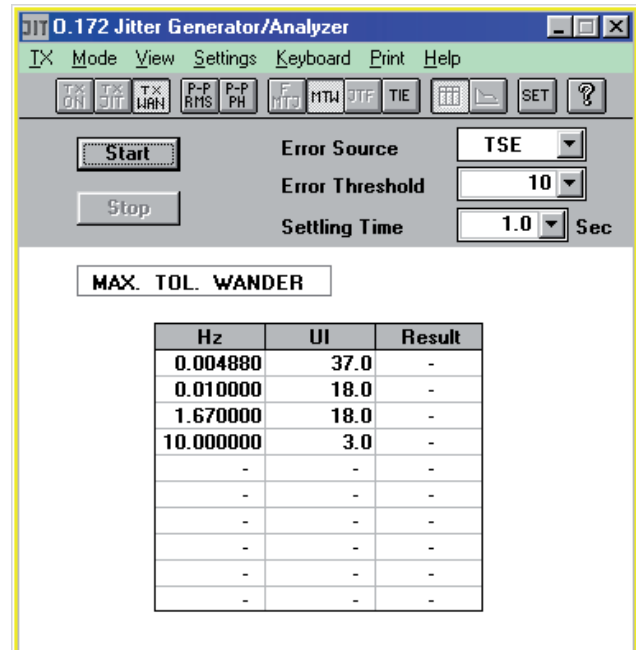
The existing tolerance masks for the ANT-10G can be altered as required to suit requirements that do not conform to specific standards. The new values selected for jitter frequency and amplitude are stored when the application is saved.

Automatic pointer sequences for analyzing combined jitter (available with CATS test sequencer option)

Among other things, T1.105.03 defines various pointer sequence scenarios for testing combined jitter (mapping and pointer jitter) at network elements.

These sequences are normally selected manually and the jitter measured. ANT-10G allows simple automation of these sequences. The entire sequence is started and the maximum pointer jitter determined with a single key press. This saves considerable time spent in setting up the test and executing the measurement.

Automatic limit testing of maximum tolerable wander (MTW)



Maximum tolerable wander result display

ITU-T G.823, G.824

The ANT-10G tests the device under test for conformance to the standard tolerance mask limits for maximum tolerable wander.

| | |
|--------------------|---------------------------------------|
| Measurement points | up to 10 frequency/amplitude values |
| Detection criteria | TSE (bit error), alarms |
| Frequency range | 10 μ Hz to 10 Hz, step 1 μ Hz |
| Amplitude range | 0.1 to 200 000 UI, step: 0.1 UI |

The result of each measurement is shown in a table with an “OK” or “FAILED” message.

ATM options

With its ATM options, ANT family enables commissioning tests on newly installed ATM links. The major error and delay-related performance parameters can be quickly and reliably verified in this manner. Using the flexible cell generator, policing functions can be easily checked. Bit error analyses and alarm flow diagnostics allow a fast assessment of whether links are working properly.

ATM cells can be generated for all bit rates up to STM-1/OC-3 (for option BN 3035/90.63).

ATM cells can be generated for all bit rates up to STM-4c/OC-12c (for option BN 3060/90.63).

Add ATM up to 155M (for ANT-20 only) General

BN 3035/90.63

Adjustable test channel from 0 to 150 Mb/s

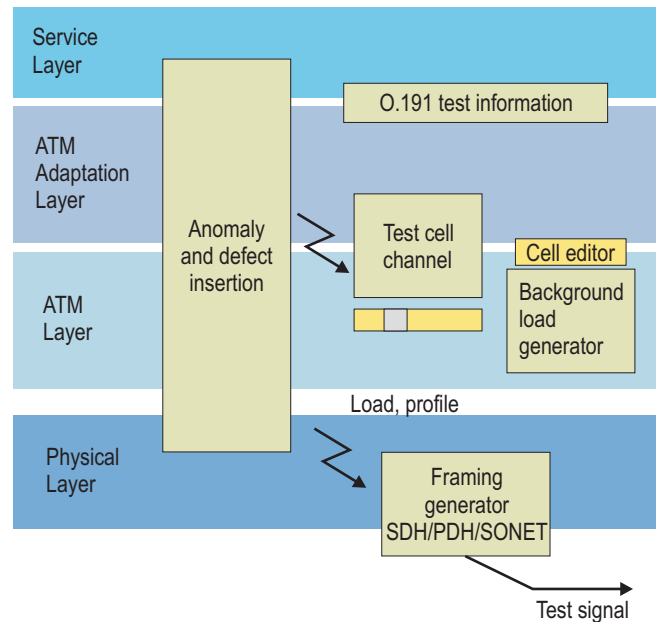
In ATM network elements, user channels are monitored with the UPC (usage parameter control). The sensors of the control instance can be quickly checked if the bandwidth of a test channel exceeds the set threshold in the network element. For all measurements, the test channel in the ANT-10G is set on-line. Settings are made directly with a control which shows the bandwidth in Mb/s, Cells/s or %. This makes it easy to simulate CBR (Constant Bit Rate) sources. For each interface, the load setting has a range from 0.01% to 100%. This corresponds to the load conditions which can occur in the real world.

Load profiles

A test channel can be generated with typical load profiles in order to stress network elements or simulate source profiles. In burst mode, for example, the burst load, burst length and burst period parameters can be used to simulate a video signal whose key figures correspond to a real-life signal.

Background load generator

To make a real-time measurement under loaded conditions, additional background load can be simulated to supplement the test channel (foreground traffic). The ATM channels are defined using an editor. The user specifies the repetition rate of the load cell and a sequence of empty cells. Load channels can be transmitted continuously as a sequence. The load generator can also be used separately with the test channel switched off. In this case, the channels and profiles can be user-specified.



Determining cell delay variation

The ANT family includes very powerful tools for measuring delay parameters. Once a precise measurement has been made, subsequent measurements usually require only a low-resolution display to allow rapid pass/fail assessment. Delay values are displayed by the ATM Traffic Analyzer as a histogram with a minimum class width equal to 160 ns (maximum 335 ms). As a result, delay fluctuations are shown graphically with the same resolution. An adjustable offset can be used to maintain measurement accuracy even if the delay values are high, e.g. over international links.

F4/F5 OAM alarm flow

In accordance with I.610 and the ATM forum standard, the status of ATM paths and channels is transmitted in the OAM cell stream (fault management). The ANT family generates the alarms VP-AIS, VC-AIS or VP-RDI, VC-RDI for the foreground channel. The receiver simultaneously detects alarms and error messages in the channel and path.

The ATM module comprises

- Generation and analysis of ATM cell streams
- ATM layer cell transfer performance as per ITU-T I.356, O.191
- AAL-1 segmentation/reassembly for circuit emulation
- STM-1/STS-3c with C4 ATM mapping, ITU-T G.707, ANSI T1.105/107
- F4/F5 fault management OAM flow for AIS and RDI as per ITU-T I.610, ATM forum UNI 3.1

Generator

Signal structure (TC sub-layer) contiguous concatenation to T1.646, I.432 and af-phy-0046.000

| | |
|--------------------------------------|----------------------------|
| Bit rates of the framed cell streams | 155520 kb/s |
| Cell scrambler X43+1 (ITU-T) | can be switched on and off |

Test cell channel

| | |
|-----------------|------------------|
| Adjustable from | 0 to 149760 kb/s |
| Header setting | editor |
| Load setting in | Mb/s, Cells/s, % |

Test cells, payload pattern

| | |
|---|--------------------------------------|
| AAL-0, Pseudo-Random Bit Sequences (PRBS) | $2^{11}-1$, $2^{15}-1$, $2^{23}-1$ |
| AAL-1, Pseudo-Random Bit Sequences (PRBS) | $2^{11}-1$, $2^{15}-1$, $2^{23}-1$ |
| Programmable word, length | 16 bits |
| Test pattern for ATM performance analysis, with sequence number | 3 bytes |
| Time stamp | 4 bytes |
| Error correction | CRC-16 |

Load profiles

| | |
|--|-----------------------|
| Equidistant, setting range | 1 to 10000 cell times |
| Constant bit rate (CBR), setting range | 0.01% to 100% |

Variable bit rate (VBR), settings

| | |
|----------------|-----------------------|
| Peak cell rate | 1% to 100% |
| Mean cell rate | 1% to 100% |
| Burst size | 1 to 1023 cell times |
| Burst period | 2 to 32767 cell times |

Error insertion

Physical layer as with ANT-10G basic instrument ATM layer, AAL:

Correctable and non-correctable header errors

AAL-0, cell payload bit errors

AAL-1, sequence number errors

AAL-1, SAR-PDU bit errors

AAL-1 SNP, CRC errors

AAL-1 SNP, parity errors

Resolution single errors, error ratio, n errors in m cells

Alarm generation

Loss of Cell Delineation LCD

ATM layer (for selected test cell channel):

| | |
|----------------------|--|
| OAM F4/F5 fault flow | VP AIS, VP RDI, VP AIS+VC AIS, VC AIS, VC RDI, VP RDI+VC RDI |
|----------------------|--|

Background load generator

For programming user-defined cell sequences. The sequences can be transmitted at a selectable repetition rate.

| | |
|---------|--------------------------------|
| Editor | 200 ATM channels |
| Header | user-selectable |
| Payload | 1 filler byte, user-selectable |

Circuit emulation (for selected test cell channel)

| | |
|---------------------------------------|--|
| Generation of an asynchronous channel | 1544, 2048, 6312, 8448, 34...368, 44736 kb/s, 2048 kb/s with PCM30 frame structure |
| ATM channel segmentation | AAL-1, ITU-T I.363 |

Receiver

| | |
|----------------------------------|----------------------------|
| Bit rates of framed cell streams | 155520 kb/s |
| Cell scrambler X43+1 (ITU-T) | can be switched on and off |

Error measurement (anomalies), statistics

Detection of the following error types:

Correctable and non-correctable header errors

AAL-0, cell payload bit errors

AAL-1, sequence number errors

AAL-1, SAR-PDU bit errors

AAL-1 SNP, CRC errors

AAL-1 SNP, parity errors

ATM performance analysis

Cell error ratio

Cell loss ratio

Cell mis-insertion rate

Mean cell transfer delay

2-point cell delay variation

measured between minimum and maximum cell transfer delay values

Cell transfer delay histogram

| | |
|---------------------|-------------|
| Number of classes | 128 |
| Minimum class width | 160 ns |
| Maximum class width | 335 ms |
| Settable offset | 0 to 167 ms |
| Offset step width | 2.5 μ s |

Alarm detection (defects) (ISM, OoS)

Loss of Cell Delineation LCD

ATM layer (for selected test cell channel):

OAM F4/F5 fault flow VP AIS, VP RDI, VC AIS, VC RDI

Traffic channel analysis

Time chart simultaneously for:

All traffic cells

Average cell rate of any selected cell channel

Peak cell rate of any selected cell channel

Display in Mb/s, Cells/s, %

Channel utilization histogram

All assigned cells

One selected cell channel (user cells)

Cell distribution in traffic channel with classification by:

User cells

F5 OAM flow

F4 OAM flow

User cells with CLP=1

Circuit reassembly (for selected test cell channel)

| | |
|--|---|
| Reassembly | AAL-1, ITU-T I.363 |
| Error measurement on an asynchronous channel | 1544, 2048, 6312, 8448, 34368, 44736 kb/s, 2048 kb/s with PCM30 frame structure |

ATM SDH mappings

The ATM mappings provide frame structures for interfaces conforming to ITU-T G.804/832/707.

Corresponding physical layer measurement functions are offered by the mapping options for the interfaces. These include error and alarm insertion, error measurement and alarm detection.

| | |
|-------------------------------------|-------------|
| E4 (140 Mb/s) ATM mapping, Bit rate | 139264 kb/s |
| E3 (34 Mb/s) ATM mapping, Bit rate | 34368 kb/s |
| E1 (2 Mb/s) ATM mapping, Bit rate | 2048 kb/s |
| STM-1/VC3 ATM mapping, Bit rate | 155520 kb/s |

ATM/SONET mappings

The ATM mappings provide frame structures for interfaces conforming to ANSI T1.105/107.

Corresponding physical layer measurement functions are offered by the mapping options for the interfaces. These include error and alarm insertion, error measurement and alarm detection.

STS-1/STS-3 ATM mapping

| | |
|-----------------|------------|
| Bit rate, STS-1 | 51840 kb/s |
|-----------------|------------|

| | |
|---|--|
| DS3 (45 Mb/s) ATM mapping and STS-1 DS3 ATM mapping | |
|---|--|

| | |
|--------------------|--|
| PLCP-based mapping | |
|--------------------|--|

| | |
|-------------------|--|
| HEC-based mapping | |
|-------------------|--|

| | |
|----------|------------|
| Bit rate | 44736 kb/s |
|----------|------------|

| | |
|--------------------------------------|-----------|
| DS1 (1.5 Mb/s) ATM mapping, Bit rate | 1544 kb/s |
|--------------------------------------|-----------|

Add ATM up to 622M (for all ANTs)**BN 3060/90.63**

Only in conjunction with an optical interface of at least up to STM4/OC-12

The specifications and functionalities described in the option BN 3035/90.63 are also included herein

Generator

| | |
|--------------------------------------|-------------|
| Bit rates of the framed cell streams | 622080 kb/s |
|--------------------------------------|-------------|

Load profiles (different from BN 3035/90.63)

| | |
|----------------------------|--------------------------|
| Equidistant, setting range | 4 to 40000 cell times +1 |
|----------------------------|--------------------------|

| | |
|--|-------------|
| Constant bit rate (CBR), setting range | 0.01 to 25% |
|--|-------------|

| | |
|-----------------------------------|--|
| Variable bit rate (VBR), settings | |
|-----------------------------------|--|

| | |
|----------------|----------|
| Peak cell rate | 1 to 25% |
|----------------|----------|

| | |
|----------------|----------|
| Mean cell rate | 1 to 25% |
|----------------|----------|

| | |
|------------|----------------------|
| Burst size | 4 to 4092 cell times |
|------------|----------------------|

| | |
|--------------|------------------------|
| Burst period | 8 to 131068 cell times |
|--------------|------------------------|

Background load generator (different from BN 3035/90.63)

1 channel can be switched ON/OFF

| | |
|--------------------|-------------------|
| Residual bandwidth | up to 599040 kb/s |
|--------------------|-------------------|

Header is freely definable

Receiver

| | |
|----------------------------------|-------------|
| Bit rates of framed cell streams | 622080 kb/s |
|----------------------------------|-------------|

Test automation and remote operation options **GPIB (PCMCIA) remote control interface****BN 3035/92.10**

Remote control of instrument functions using SCPI command structure. A GPIB adapter card for the ANT family PCMCIA interface is supplied with this option

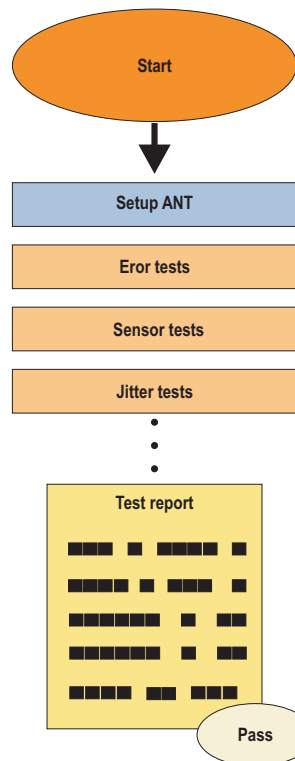
Interface

GPIB

Test sequencer CATS**BN 3035/95.90**

The test sequencer is the ideal tool for rapid, simple adaptation and automatic performance of complete test sequences on the ANT family (CATS = Computer Aided Test Sequence). This saves time where repetitive tests are required in the production, installation and monitoring of SDH, SONET and ATM network elements. The comprehensive test case library includes solutions for various applications, such as BERTs, alarm sensor tests, jitter, offset and pointer tests and monitoring ATM Quality of Service (QoS) parameters.

Once created, test sequences are started with a single mouse click. A report in ASCII format for documentation purposes is compiled during the measurement. All test cases are pre-defined and ready to run. They can also be easily customized.



Automatic test sequences with the ANT-10G

Simplified test automation

Particularly in design verification, R&D, regression testing and conformance testing it is required to deal with a number of test sets from different vendors. In many cases it is also necessary to include the “System under Test” in an automated setup. The CATS Professional package is designed to simplify integration of the ANT family into these test environments. Existing CATS test routines can be made available so they run not only in a self-contained manner but also as ready-made plug-ins for the customer’s own test solution.

For more information see the data sheet „Test Automation and Remote Control“.

Remote operation

BN3035/95.30

This option allows operation of the ANT family from a Windows™ PC. The complete ANT family user interface is transferred to the PC screen via modem or LAN link. This means that all the functions of the instrument can be used from any remote location. The results are simply transferred to the controlling PC for further processing. Applications include troubleshooting networks or centralized operation of test instrumentation and devices in the production and system test environment.

Provides remote operation software for remote GUI via the included Ethernet Interface, PCMCIA modem or external modem (at the V.24 interface).

Other options

Optical power splitter (90%/10%)

BN3035/90.49

The optical power splitter is built into the ANT family mainframe. Three optical test adapters are required to operate it, please indicate your choice.

The optical power splitter provides an optical monitor point. The input signal is passed through to the output transparently.

| | |
|--------------------------|------------------------|
| Light energy forwarded | approx. 90% (-0.45 dB) |
| Light energy coupled out | approx. 10% (-10 dB) |

The optical power splitter operates in the following ranges:

| | |
|-------------|-------------------------------------|
| Wavelengths | 1260 to 1360 nm and 1500 to 1600 nm |
|-------------|-------------------------------------|

Calibration report

BN3060/94.01

Calibration is carried out in accordance with a quality management system certified to ISO 9001.

Recommended confirmation interval 24 months.

Ordering information

| Order No. | Name | Possible options |
|---|---|--|
| ANT-20/ANT-20se packages | | |
| Each package includes: SDH/SONET all mappings, OH byte capture/sequencer, TCM, APS, PDH/DSn with Mux/Demux, D&I, Through mode , Remote Control via V.24/RS-232, TCP/IP, LabWindows driver, optical connectors | | |
| BN 3035/13 | ANT-20 up to 155M el. P#13 • ANT-20 SDH STM-0/1, OC-1/3 • Electrical Interfaces: 1.5 to 155 Mb | • Add jitter/wander up to 155M • Add ATM up to 155M BN 3035/91.29 BN 3035/90.63 |
| BN 3035/14 | ANT-20 up to 155M el. P#14 • ANT-20 SONET OC-1/3, STM-0/1 • Electrical Interfaces: 1.5 to 155 Mb | • Add jitter/wander up to 155M • Add ATM up to 155M BN 3035/91.29 BN 3035/90.63 |
| BN 3035/ 08 | ANT-20 up to 155M P#1 • ANT-20 SDH STM-0/1 • Electrical Interfaces: 1.5 to 155 Mb • Optical Interfaces: 52 to 155 Mb — 1310/1550 nm | • Add jitter/wander up to 155M • Add ATM up to 155M BN 3035/91.29 BN 3035/90.63 |
| BN 3035/15 | ANT-20 up to 155M P#15 • ANT-20 SONET OC-1/3, STM-0/1 • Electrical Interfaces: 1.5 to 155 Mb • Optical Interfaces: 52 to 155 Mb — 1310/1550 nm | • Add jitter/wander up to 155M • Add ATM up to 155M BN 3035/91.29 BN 3035/90.63 |
| BN 3035/ 09 | ANT-20 up to 622M P#2 • ANT-20 SDH STM-0/1/4 • Electrical Interfaces: 1.5 to 155 Mb • Optical Interfaces: 52 to 622 Mb — 1310/1550 nm | • Add jitter/wander up to 155M • Add jitter/wander up to 622M • Add ATM up to 622M BN 3035/91.29 BN 3035/91.31 BN 3060/90.63 |
| BN 3060/ 55 | ANT-20 up to 622M P#5 • ANT-20se SDH STM-0/1/4 • Electrical Interfaces: 1.5 to 155 Mb • Optical Interfaces: 52 to 622 Mb — 1310/1550 nm | • Add jitter/wander up to 155M • Add jitter/wander up to 622M • Add ATM up to 622M BN 3035/91.29 BN 3035/91.31 BN 3060/90.63 |
| BN 3060/ 56 | ANT-20 up to 622M P#6 • ANT-20se SONET OC-1/3/12 • Electrical Interfaces: 1.5 to 155 Mb • Optical Interfaces: 52 to 622 Mb — 1310/1550 nm | • Add jitter/wander up to 155M • Add jitter/wander up to 622M • Add ATM up to 622M BN 3035/91.29 BN 3035/91.31 BN 3060/90.63 |
| BN 3060/ 57 | ANT-20 up to 2.5G P#7 • ANT-20se SDH STM-0/1/4/16 • Electrical Interfaces: 1.5 to 155 Mb • Optical Interfaces: 52 to 2.5G — 1310/1550 nm | • Add jitter/wander up to 155M • Add jitter/wander up to 622M • Add jitter/wander up to 2.5G • Add ATM up to 622M BN 3035/91.29 BN 3035/91.31 BN 3060/91.32 BN 3060/90.63 |
| BN 3060/ 58 | ANT-20 up to 2.5G P#8 • ANT-20se SONET OC-1/3/12/48 • Electrical Interfaces: 1.5 to 155 Mb • Optical Interfaces: 52 to 2.5G — 1310/1550 nm | • Add jitter/wander up to 155M • Add jitter/wander up to 622M • Add jitter/wander up to 2.5G • Add ATM up to 622M BN 3035/91.29 BN 3035/91.31 BN 3060/91.32 BN 3060/90.63 |
| Add Jitter/Wander for ANT-20 and ANT-20se packages | | |
| Each package includes: Jitter generation and analysis, automatic measurements: MTJ, F-MTJ, JTF, MTIE-TDEV offline analysis | | |
| BN 3035/ 91.29 | Add Jitter /Wander up to 155M | For ANT-20 and ANT-20se |
| BN 3035/ 91.31 | Add Jitter /Wander up to 622M | For ANT-20 and ANT-20se |
| BN 3060/ 91.32 | Add Jitter /Wander up to 2.5G | For ANT-20se only |
| ANT-10G packages | | |
| Each package includes: SDH/SONET all mappings, OH byte capture/sequencer, TCM, APS, PDH/DSn with Mux/Demux, D&I, Through mode , Remote Control via V.24/RS-232, TCP/IP, LabWindows driver, optical connectors | | |

| Order No. | Name | Possible options | |
|--|--|--|--------------------------------|
| BN 3060/ 71 | ANT-10G 1550 P#1 <ul style="list-style-type: none"> • ANT-10G SDH STM-1/4/16 and 10G • Electrical Interfaces: 1.5 to 155 Mb • Optical Interfaces: 52M to 2.5G — 1310/1550 nm 10G — 1550 nm | <ul style="list-style-type: none"> • Add ATM up to 622M • Add 10G electrical Interfaces * | BN 3060/90.63 BN 3060/91.48 |
| BN 3060/ 72 | ANT-10G 1550 P#2 <ul style="list-style-type: none"> • ANT-10G SDH STM-64 • Electrical Interfaces: 1.5 to 155 Mb • Optical Interfaces: 10G — 1550 nm | <ul style="list-style-type: none"> • Jitter/Wander 10G • Add ATM up to 155M • Add 10G electrical Interfaces * | BN 3035/90.63 BN 3060/91.48 |
| BN 3060/ 73 | ANT-10G 1550 P#3 <ul style="list-style-type: none"> • ANT-10G SDH STM-1/ and 64 • Electrical Interfaces: 1.5 to 155 Mb • Optical Interfaces: 52 to 622 Mb — 1310/1550 nm 10G — 1550 nm • Jitter/Wander all built-in rates | <ul style="list-style-type: none"> • Add ATM up to 622M • Add 10G electrical Interfaces* | BN 3060/90.63 BN 3060/91.48 |
| BN 3060/ 74 | ANT-10G 1550 P#4 <ul style="list-style-type: none"> • ANT-10G SDH STM-1/4/16 and 64 • Electrical Interfaces: 1.5 to 155Mb • Optical Interfaces: 52 to 2.5G — 1310/1550 nm 10G — 1550 nm • Jitter 10G | <ul style="list-style-type: none"> • Add ATM up to 622M • Add 10G electrical Interfaces * | BN 3060/90.63 BN 3060/91.48 |
| BN 3060/ 81 | ANT-10G Dual P#11 <ul style="list-style-type: none"> • ANT-10G SDH STM-1/4/16 and 10G • Electrical Interfaces: 1.5 to 155Mb • Optical Interfaces: 52M to 2.5G — 1310/1550nm 10G – 1310/1550nm | <ul style="list-style-type: none"> • Add ATM up to 622M • Add 10G electrical Interfaces * | BN 3060/90.63 BN 3060/91.54 |
| BN 3060/ 82 | ANT-10G Dual P#12 <ul style="list-style-type: none"> • ANT-10G SDH STM-64 • Electrical Interfaces: 1.5 to 155Mb • Optical Interfaces: 10G – 1310/1550nm • Jitter/Wander 10G | <ul style="list-style-type: none"> • Add ATM up to 155M • Add 10G electrical Interfaces * | BN 3035/90.63 BN 3060/91.54 |
| BN 3060/ 83 | ANT-10G Dual P#13 <ul style="list-style-type: none"> • ANT-10G SDH STM-1/4 and 64 • Electrical Interfaces: 1.5 to 155Mb • Optical Interfaces: 52 to 622Mb — 1310/1550nm 10G – 1310/1550nm • Jitter/Wander all built-in rates | <ul style="list-style-type: none"> • Add ATM up to 622M • Add 10G electrical Interfaces * | BN 3060/90.63 BN 3060/91.54 |
| BN 3060/ 84 | ANT-10G Dual P#14 <ul style="list-style-type: none"> • ANT-10G SDH STM-1/4/16 and 64 • Electrical Interfaces: 1.5 to 155Mb • Optical Interfaces: 52 to 2.5G — 1310/1550nm 10G – 1310/1550nm • Jitter 10G | <ul style="list-style-type: none"> • Add ATM up to 622M • Add 10G electrical Interfaces * | BN 3060/90.63 BN 3060/91.54 |
| Add ATM Packages | | | |
| Each package includes: AAL-0, AAL-1, variable traffic loads, Circuit emulation, ATM performance analysis, traffic channel statistics | | | |
| BN 3035/90.63 | Add ATM up to 155M <ul style="list-style-type: none"> • Mappings: SDH: E1, E3, E4, VC3 • Mappings: SONET: DS1, DS3, STS-1 | For ANT-20 only | |
| BN 3060/90.63 | Add ATM up to 622M <ul style="list-style-type: none"> • Mappings: SDH: E1, E3, E4, VC3, VC4c • Mappings: SONET: DS1, DS3, STS-1, OC-12c | For all ANTs | |

| Order No. | Name | Possible options |
|-----------|------|------------------|
|-----------|------|------------------|

| | | |
|-----------------------------|--|--|
| Add Accessories to all ANTs | | |
|-----------------------------|--|--|

| | | |
|---------------|-------------------|-------------------------|
| BN 3035/95.95 | CATS Professional | Test sequencer for ANTs |
|---------------|-------------------|-------------------------|

| | | |
|---------------|-------------------------------|--|
| BN 3035/92.10 | Remote Control interface GPIB | |
|---------------|-------------------------------|--|

| | | |
|---------------|-------------------------------|--|
| BN 3035/95.30 | Remote Operation (PcAnywhere) | |
|---------------|-------------------------------|--|

| | | |
|---------------|---------------------------------------|--|
| BN 3035/90.49 | Optical Power splitter ANTs (90%/10%) | Includes three optical adapters -- please select |
|---------------|---------------------------------------|--|

| | | |
|---------------|-------------------------|---|
| BN 3060/94.01 | Calibration report ANTs | Calibration is carried out in accordance with quality management system certified to ISO 9001 |
|---------------|-------------------------|---|

| | | |
|--------------|------------------|--|
| BN 960/00.08 | Hard case ANT-20 | |
|--------------|------------------|--|

| | | |
|---------------|------------------|--|
| BN 3035/92.02 | Soft case ANT-20 | |
|---------------|------------------|--|

| | | |
|---------------|----------------------------|--|
| BN 3035/92.03 | Hard case ANT-20se/ANT-10G | |
|---------------|----------------------------|--|

| | | |
|---------------|---------------------------|--|
| BN 3035/92.04 | External keyboard (UK/US) | |
|---------------|---------------------------|--|

| | | |
|------------|---------------------------------------|--|
| BN 3903/63 | Decoupler (-20 dB, 1.6/5.6 jack plug) | |
|------------|---------------------------------------|--|

| | | |
|-----------|------------------------------|--|
| BN 822/01 | TKD-1 probe, 48 to 8500 kb/s | |
|-----------|------------------------------|--|

* This option must be ordered with the mainframe as a subsequent upgrade is not possible

Optical connectors

One type of optical connector must be selected from BN 2060/00.xy for every optical interface as listed below.

Measuring adapter

| Order No. | Name |
|-----------|------|
|-----------|------|

| | |
|---------------|-------------------|
| BN 2060/00.51 | FC, FC-PC, FC-APC |
|---------------|-------------------|

| | |
|---------------|-------------------|
| BN 2060/00.58 | SC, SC-PC, SC-APC |
|---------------|-------------------|

| | |
|---------------|----------------|
| BN 2060/00.32 | ST type (AT&T) |
|---------------|----------------|

| | |
|---------------|-----------|
| BN 2060/00.50 | DIN 47256 |
|---------------|-----------|

| | |
|---------------|------------------|
| BN 2060/00.53 | E 2000 (Diamond) |
|---------------|------------------|

| | |
|---------------|---------------------|
| BN 2060/00.59 | LC, F-3000 (PC-APC) |
|---------------|---------------------|

Optical attenuators

| Order No. | Name | | |
|-----------|------|--|--|
|-----------|------|--|--|

| | | | |
|---------------|----------------------------|-------|--------------|
| BN 2060/00.51 | LC, F-3000 (PC-APC)/FC-PC, | 10 dB | 1310/1550 nm |
|---------------|----------------------------|-------|--------------|

| | | | |
|---------------|----|-------|--------------|
| BN 2239/90.38 | SC | 10 dB | 1310/1550 nm |
|---------------|----|-------|--------------|

JDSU offers a wide range of optical power meters, sources and attenuators.

Contact your local sales representative for details.

Related products



Multiple Application Platform (MAP)

With over 20 unique modules, MAP enables users to manipulate and control optical transmission signals (independent of rate or format) and enables testing of transmission quality as a function of parameters such as Average Power, OSNR and Polarization state. Optical switches and optical splitter modules may be added to enable automation interfaces for multiple devices and/or multiple signal sources.

The modular platform is available in 3 or 8 slot chassis with GPIB or RS-232 interfaces. ActiveX and LabView drivers are also provided. Rack mount kits and a reverse mount system enable clean factory test integration and rear fiber exit when needed.

2×2: optical switch (cross)

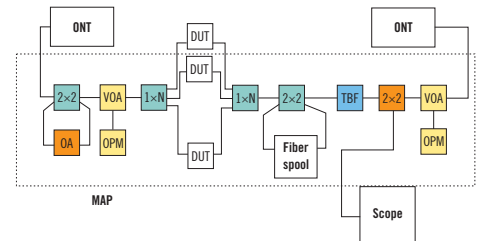
OA: optical amplifier

OPM: optical power meter

VOA: variable optical attenuator

1×N: 1:N switch

TBF: tunable band pass filter



OLC-65 Optical Level Controller

The OLC-65 contains both attenuator and power meter function making test set-up simple and eliminating the need to connect several instruments, cables and couplers. See OLC-65 data sheet for details.



GPIB-RS232 Converter GPIB-232CV-A

It is recommended that the National Instruments GPIB/RS-232 Converter be used for controlling the ONT-50 via GPIB. Ordering is country-specific.

Go to www.ni.com for further details.



Handheld Fiber Inspection Microscope OIM-400

Many light transmission problems occur as a result of improper fiber connectors. The Fiber Microscope reflects details of scratches and any contamination of connector end surfaces. The light weight microscope is equipped with universal push-pull adapter.

Magnification 400×

Power supply 3 "AAA" batteries

OIM-400 BN WO-FM-C400



TSR-37 Rubidium Timing Source Reference

DA 3700/00

The TSR-37 is a powerful reference source to quickly measure and test the synchronization quality of PDH/SDH/SONET digital networks. MTIE and TDEV measurements for up to 1000 seconds can be easily performed without a GPS reference. Coupled with the optional GPS-FC, the range of observation time can be largely extended to meet specific requirements.

Provides the reference clock for wander analysis.

PDH/SDH/SONET Wander measurement source



ONT-50

Portable solution for testing of design and conformance of Next Generation transport networks. It has four slots that can be equipped with any combination of modules for PDH/DSn, SDH/SONET up to 10 Gb/s, OTN up to 10.7 Gb/s, Jitter/Wander, NewSDH/NewSONET, PoS, Ethernet, Q-factor, and OSA testing. Multiple users can run multiple applications simultaneously and independently. Supports remote operation and automation. High resolution 12" colored touchscreen. See ONT-50 data sheet for details.



ONT-506

Portable desktop solution for testing of design and conformance of Next Generation transport networks. It has six slots that can be equipped with any combination of modules for PDH/DSn, SDH/SONET up to 40 Gb/s, Multichannel, OTN up to 43 Gb/s, Jitter/Wander up to 43 Gb/s, NewSDH/NewSONET, PoS, Ethernet up to 10GE, and OSA testing. Multiple users can run multiple applications simultaneously and independently. Supports remote operation and automation. Linux operation system. High resolution 15" colored touchscreen. See ONT-506/512 data sheet for details.



ONT-512

Rack-mount solution for testing of design and conformance of Next Generation transport networks. Same applications as ONT-506 with 12 slots. Easy integration into automated environments with Linux operating system and Tcl/Tk and LabWindows libraries. Built-in controller. See ONT-506/512 data sheet for details.

All statements, technical information and recommendations related to the products herein are based upon information believed to be reliable or accurate. However, the accuracy or completeness thereof is not guaranteed, and no responsibility is assumed for any inaccuracies. The user assumes all risks and liability whatsoever in connection with the use of a product or its applications. JDSU reserves the right to change at any time without notice the design, specifications, function, fit or form of its products described herein, including withdrawal at any time of a product offered for sale herein. JDSU makes no representations that the products herein are free from any intellectual property claims of others. Please contact JDSU for more information. JDSU and the JDSU logo are trademarks of JDS Uniphase Corporation. Other trademarks are the property of their respective holders. © 2006 JDS Uniphase Corporation. All rights reserved. 10143236 002 0707 ANT.DS.OPT.TM.AE

Test & Measurement Regional Sales

| | | | | |
|---|--|---|---|-----------------------------|
| NORTH AMERICA TEL: 1 866 228 3762 FAX: +1 301 353 9216 | LATIN AMERICA TEL:+55 11 5503 3800 FAX:+55 11 5505 1598 | ASIA PACIFIC TEL:+852 2892 0990 FAX:+852 2892 0770 | EMEA TEL:+49 7121 86 2222 FAX:+49 7121 86 1222 | WEBSITE:www.jdsu.com |
|---|--|---|---|-----------------------------|