

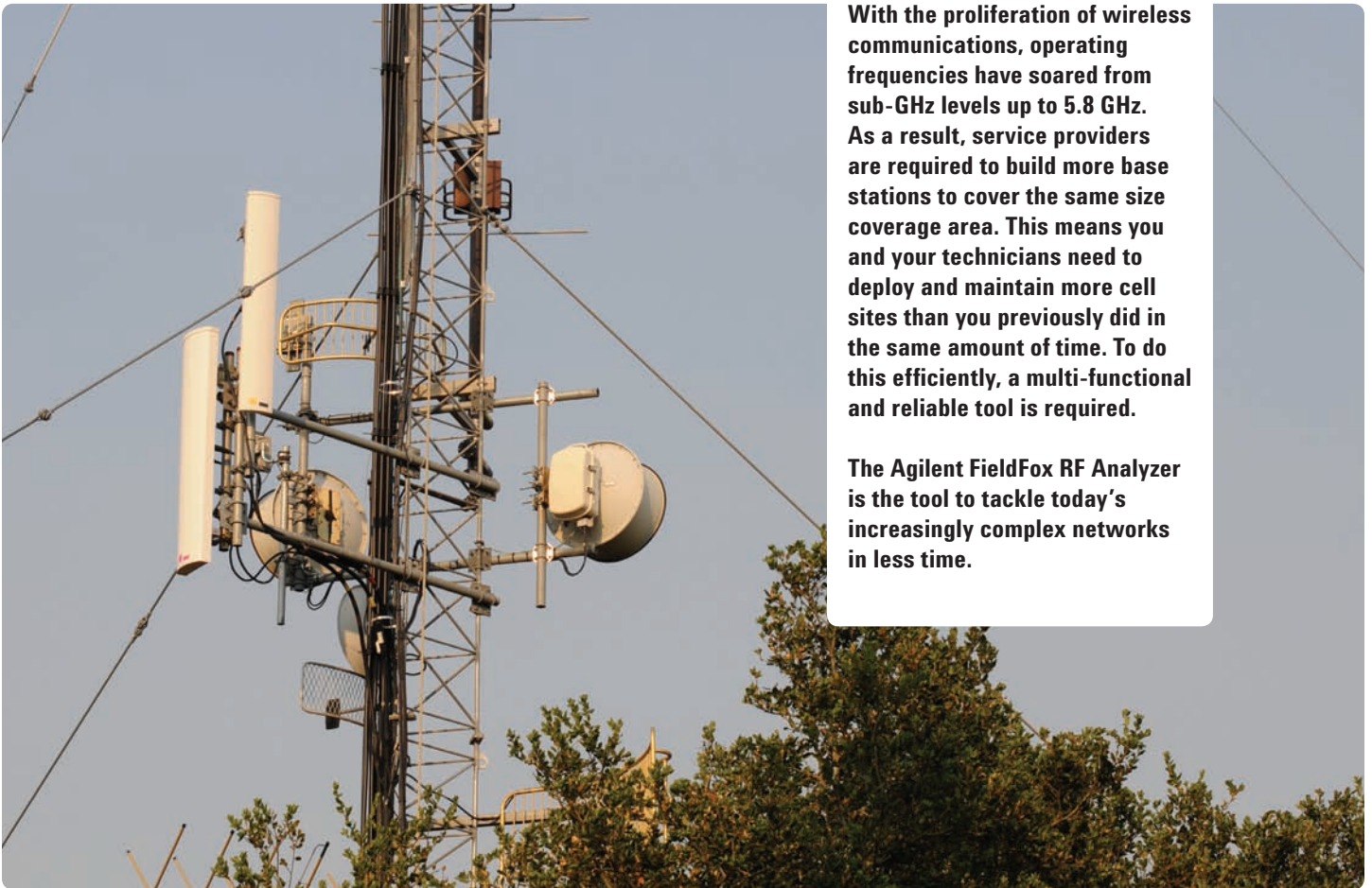
# Agilent **FieldFox** RF Analyzer N9912A 4/6 GHz

## Technical Overview



# Tackle Complex Networks in Less Time

## FieldFox



With the proliferation of wireless communications, operating frequencies have soared from sub-GHz levels up to 5.8 GHz. As a result, service providers are required to build more base stations to cover the same size coverage area. This means you and your technicians need to deploy and maintain more cell sites than you previously did in the same amount of time. To do this efficiently, a multi-functional and reliable tool is required.

The Agilent FieldFox RF Analyzer is the tool to tackle today's increasingly complex networks in less time.





## World's Most Integrated Handheld RF Analyzer



### Key measurements

- Cable and antenna test (distance to fault, return loss, etc.)
- Cable loss measurement
- Insertion loss and transmission measurement
- Spectrum analyzer
- Power meter with USB power sensor
- Vector network analysis with Smith chart display
- Vector voltmeter

### Key differentiators

- Integrated *QuickCal* calibrates without a calibration kit
- Immediate calibration with *CalReady*
- 50 percent faster than traditional handheld instruments
- Superior dynamic range (96 dB) and sensitivity (-148 dBm) in the spectrum analysis mode
- Easy-to-use, task-driven user interface

# Task-driven Features

# FieldFox



# FieldFox



2.8" D  
72 mm

**RF Out**

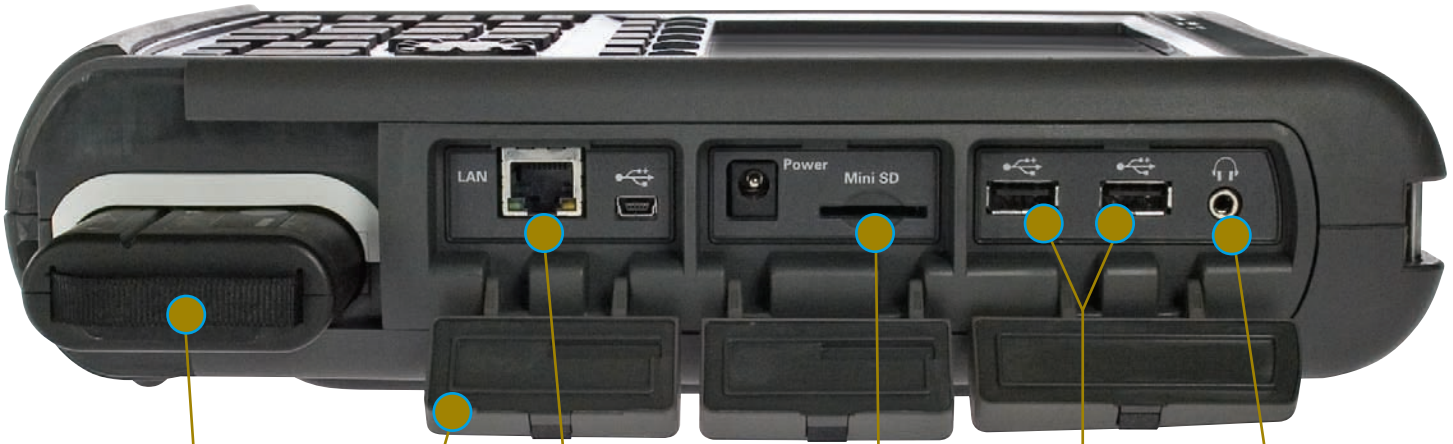
**External reference**

**RF In**

**Connector bay protects RF connectors**

**Spacious connector design makes connections fast and simple**

**Quick-connect shoulder strap clips**



**Easily accessible battery compartment**

**LAN port for fast data transfer**

**SD flash card slot for additional data storage**

**Built-in headphone jack**

**Gasketed doors protect ports from moisture**

**USB ports for convenient data transfer**

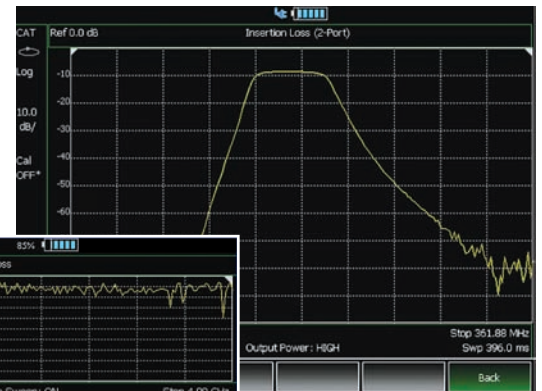




## Cable and antenna analyzer

Fifty to sixty percent of cell site problems are caused by faulty cables, connectors, and antennas. Degraded feed lines cause poor coverage, unnecessary handovers, paging failures, and access failures on uplink. To avoid service quality problems, it is critical to keep cell sites' cable and antenna systems in good condition.

Use FieldFox to make return loss, VSWR, insertion loss/transmission, one-port cable loss, and distance to fault (DTF) measurements. You can test antennas, cables, filters, and amplifiers with a single instrument.



Insertion loss display



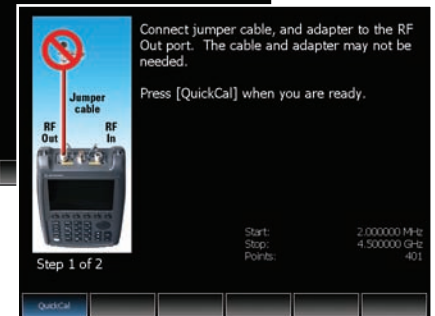
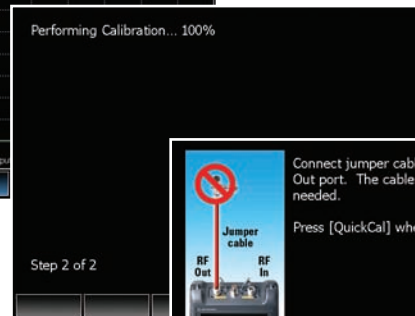
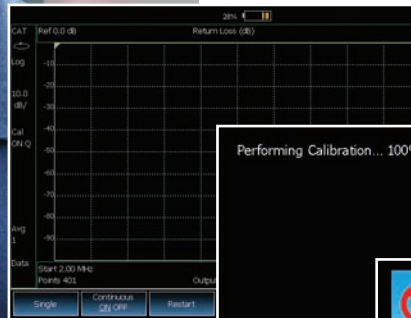
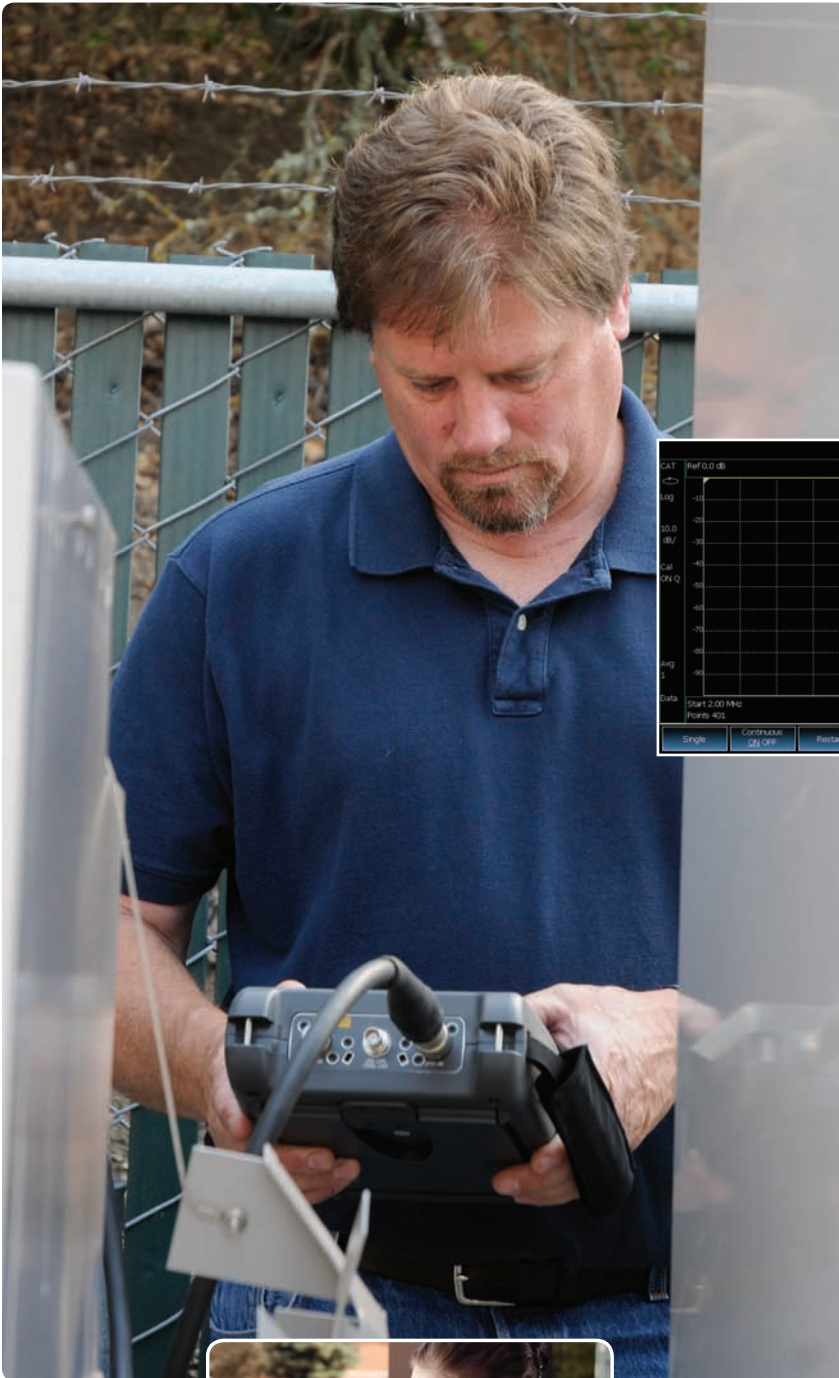
Return loss and DTF dual display

## Return loss and DTF measurements

FieldFox can make both return loss and distance to fault measurements at the same time. This helps you correlate overall system degradation with specific faults in the cable and antenna system.

## Measurements in the field without the need to manually calibrate

Each instrument is **CalReady** at the RF Out port, immediately following power-on or preset. This means it's already calibrated and ready to make accurate measurements such as one-port cable loss, VSWR, return loss, and DTF measurements at the test port.



Calibration Wizard

## Industry's first and only QuickCal

The industry's first and only built-in calibration system allows you to calibrate the cable/antenna tester without carrying a calibration kit into the field. As with any test instrument, when you add an additional device to the test port, such as a jumper cable or attenuator, you need to calibrate using a calibration kit (cal kit). **QuickCal** eliminates the hassle of carrying and using a cal kit, plus provides worry-free accuracy and excellent repeatability every time.







Spectrum analyzer display

## Broadband calibration

FieldFox allows you to make broadband calibrations, which means the instrument is calibrated over the maximum frequency span. After a broadband calibration, you can change the frequency range or number of points without recalibrating the instrument.

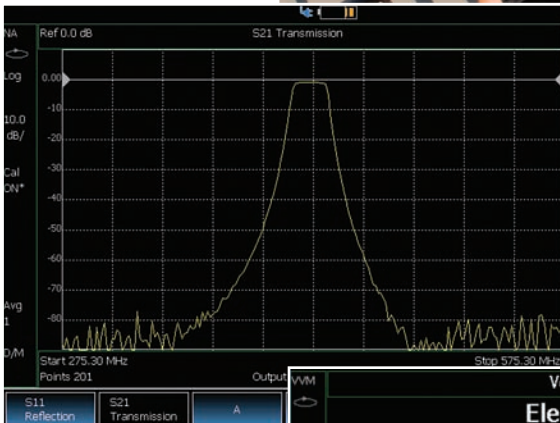
## Built-in spectrum analyzer

Interference is a major source of cell site problems. Interference can be internal or external, and uplink or downlink. Downlink interference reduces coverage, while uplink interference causes access failure. Interference has a direct impact on the quality of service of wireless communication services.

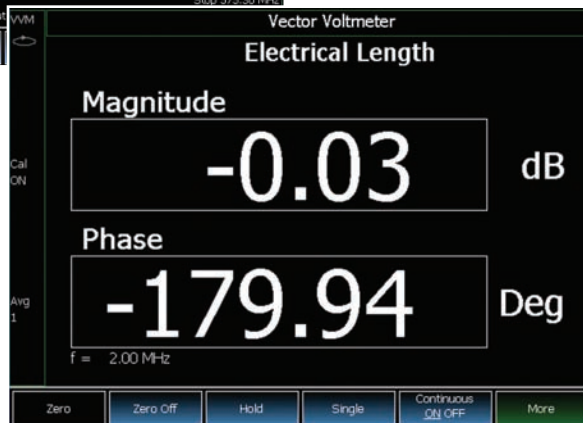
FieldFox has an optional built-in spectrum analyzer that covers frequency ranges from 100 kHz to 6 GHz. It provides a fast spectrum scan to detect interference and RF burst capture to measure intermittent signals. It displays four traces at the same time, and you can choose different detector modes.







Transmission measurement



**VVM applications:**

- Cable trimming of phase matched cables
- Verifying the isolation of 2-port components
- Radio navigation – VHF omnidirectional radio range (VOR) and instrumentation landing system (ILS)

## Network analysis

FieldFox has an optional network analyzer mode that provides standard vector network analyzer measurements such as S11, S11 phase, a Smith chart display, and S21 magnitude (requires Option 110).

## Power meter

FieldFox can connect with the Agilent U2000 Series USB power sensor to make RF/microwave power measurements up to 24 GHz.

FieldFox provides true average power measurements with a wide dynamic range from -60 dBm to +44 dBm.

The sensor has an internal zeroing function, and external calibration is not needed.

## Transmission measurement

FieldFox provides a 2-port transmission measurement that measures insertion loss, amplifier gain, filter passband, and loss. It also makes a S21 scalar measurement if Option 303 is enabled. This option covers the 2 MHz to 6 GHz frequency range.

## Vector voltmeter

Using FieldFox’s vector voltmeter (VVM), the phase shift and electrical length of a device can be measured.

By utilizing the “Zero” function, the phase and electrical length of one device can be measured relative to a “golden device”. View results on the large display which can be seen as far as ten feet away. Since every FieldFox is CalReady, no calibration is needed if VVM measurements are done at the test port.

FieldFox offers much of the VVM functionality of the popular HP/Agilent 8508A, in a handheld portable form factor, and without the need for the source/bridge/accessories required with the 8508A.



Perform and view return loss and distance to fault measurements at the same time



Make accurate true average power measurements without bringing along a power meter

## Comprehensive measurement capabilities

### Cable and antenna test

- Return loss, VSWR
- Distance to fault

Return loss/VSWR measurements allow you to evaluate the impedance matching performance of the feed line across the frequency range of interest.

Distance to fault measurements help you identify the faults along a feed line. Use these measurements to precisely pinpoint the location of damaged or degraded antennas, connectors, amplifiers, filters, and duplexers, etc.

FieldFox provides up to 1001 data-point resolution to help accurately locate faults and extend measurement distance.

### Transmission test

- Cable loss
- Insertion loss
- Amplifier gain

Transmission test is used to accurately measure cable loss, insertion loss (filters), and amplifier gain (tower mounted amplifier). FieldFox offers two-port transmission magnitude measurements with up to 72 dB dynamic range.

### One-port cable loss

For already-installed cables, FieldFox accurately measures cable loss via the RF Out port. The instrument measures actual cable loss, without the need for additional computation.

### CalReady at test port

Each instrument is calibrated at the RF Out port. When you power up the instrument, it is ready to make accurate measurements such as one-port cable loss, VSWR, return loss, and DTF at the test port.

### QuickCal

The industry's-first and only built-in calibration system allows you to calibrate the cable and antenna tester without carrying a calibration kit with you all the time. It provides worry-free accuracy and excellent repeatability. **QuickCal** also corrects drift errors caused by temperature changes during instrument operation.

### Mechanical calibration

Open-short-load (OSL) is standard in FieldFox. There are four calibration kits defined in the instrument.

### Spectrum analysis

The built-in spectrum analyzer allows you to scan up to 6 GHz and detect internal and external interference. FieldFox can detect signals as low as -148 dBm up to 6 GHz, with phase noise -88 dBc at 10 kHz, and a third order intercept (TOI) better than +18 dBm.

### Power meter

Makes accurate true average power measurements without bringing a power meter along. The state-of-the-art Agilent USB power sensors provide measurements up to 24 GHz.

### Smith chart

Smith charts can be used to display impedance matching characteristics in cable and antenna systems.

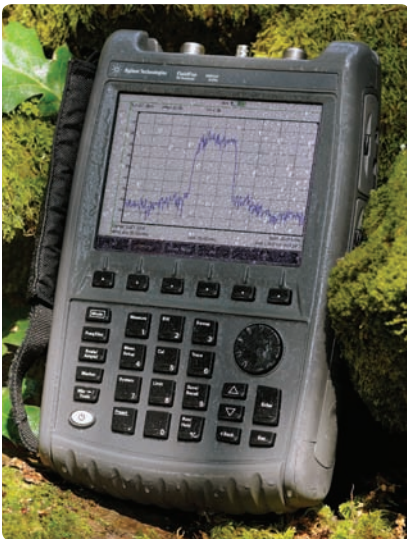
### Vector voltmeter

The large vector voltmeter display makes it easy to match two or more device's electric length and ensure signals that travel on different devices have the same delay.





Transflective display makes it easy to read measurements in direct sunlight



Water resistant chassis withstands wide temperature ranges and humid environments

## Field-proof usability

<b>Transflective display and backlit keys</b>	The display is designed for easy viewing in indoor and outdoor settings and in direct sunlight and darkness. Access different display modes via softkeys.
<b>Task-driven key design</b>	Front-panel keys are grouped to easily and naturally perform standard field measurements.
<b>Speaker and headphone jack</b>	Used for future demodulated audio signal capability.
<b>One-button measurement</b>	Provides task-driven user interface to simplify the measurements.

## Rugged design

<b>Water-resistant chassis, keypad and case design</b>	The case is made from polycarbonates that withstand wide temperature ranges and salty, humid environments.
<b>RF connector protection</b>	A specially designed connector bay protects the RF connectors from damage during drops or other external impacts.
<b>Dust-free design</b>	With no vents or fans in the case, FieldFox resists dust for better equipment reliability.
<b>Meets tough environmental standard</b>	Meets MIL-PRF-28800F Class 2 specification.
<b>Gasketed doors</b>	Protects instrument interface from moisture.

## Modern connectivity

<b>USB 2.0 ports</b>	Two USB 2.0 ports can be used to transfer files.
<b>LAN port</b>	Used to transfer data in and out of the instrument.
<b>SD flash card slot</b>	Use as a data storage device.
<b>FieldFox Data Link software</b>	Transfer data remotely from the instrument to a PC for back-office applications such as baseline analysis and report generation.

A condensed version of the specifications is provided here. See the User's Guide for the complete version;  
<http://cp.literature.agilent.com/litweb/pdf/N9912-90001.pdf>

### Specification (spec.):

Warranted performance. Specifications include guardbands to account for the expected statistical performance distribution, measurement uncertainties, and changes in performance due to environmental conditions. The following conditions must be met:

- FieldFox has been turned on at least 90 minutes
- FieldFox is within its calibration cycle
- Storage or operation at 25 °C ±5 °C range (unless otherwise stated)

### Typical (typ.):

Expected performance of an average unit over a 20 °C to 30 °C temperature range, unless otherwise indicated; does not include guardbands. It is not covered by the product warranty. The FieldFox must be within its calibration cycle.

### Nominal (nom.):

A general, descriptive term or design parameter. It is not tested, and not covered by the product warranty.

## Cable and antenna analyzer (Option 104 or 106)

### Frequency

#### Frequency range

<b>Option 104</b>	2 MHz <sup>1</sup> to 4 GHz
<b>Option 106</b>	2 MHz <sup>2</sup> to 6 GHz

#### Frequency reference

<b>Accuracy</b>	±2 ppm
<b>Aging rate</b>	±1 ppm/yr
<b>Temperature stability</b>	±1 ppm over -10 to 55 °C

#### Frequency resolution

<b>2 MHz to 1.6 GHz</b>	2.5 kHz
<b>&gt; 1.6 GHz to 3.2 GHz</b>	5 kHz
<b>&gt; 3.2 GHz to 6 GHz</b>	10 kHz

#### Measurement speed

<b>Return loss</b>	1.5 ms/point (nominal)	1.75 GHz to 3.85 GHz, 1001 points, Cal ON
<b>Distance to fault</b>	2.4 ms/point (nominal)	0 to 500 ft, 601 points, Cal ON

#### Data points

101, 201, 401, 601, 801, 1001

#### Directivity

<b>Corrected</b>	> 42 dB
<b>QuickCal (Option 111)</b>	> 42 dB (typical)

#### Source match

<b>Corrected</b>	> 36 dB
<b>QuickCal (Option 111)</b>	≥ 35 dB (typical)

#### Reflection tracking

<b>Corrected</b>	±0.06 dB
<b>QuickCal (Option 111)</b>	±0.15 dB (typical)

1. Spectrum analyzer (Option 230) start frequency is 100 kHz, usable to 5 kHz.  
 2. Spectrum analyzer (Option 231) start frequency is 100 kHz, usable to 5 kHz.



## Dynamic range

### Reflection (RF Out port)

2 MHz to 4 GHz	60 dB (typical)
> 4 GHz to 6 GHz	55 dB (typical)

### Transmission measurement (Option 110)

2 MHz to 2 GHz	72 dB (typical)
> 2 GHz to 3 GHz	67 dB (typical)
> 3 GHz to 5 GHz	58 dB (typical)
> 5 GHz to 6 GHz	49 dB (typical)

### Output power range

#### High power

2 MHz to 4 GHz	< +8 dBm, +6 dBm (nominal)
> 4 GHz to 6 GHz	< +7 dBm, +2 dBm (nominal)

#### Low power

2 MHz to 4 GHz	< -23 dBm, -25 dBm (nominal)
> 4 GHz to 6 GHz	< -24 dBm, -25 dBm (nominal)

### Immunity to interference

+16 dBm (nominal)

### Maximum input level (RF Out port)

+23 dBm

### Maximum input DC voltage (RF Out port)

±50 VDC

## Cable and antenna measurements

### Return loss

<b>Display range</b>	0 to 100 dB
<b>Resolution</b>	0.01 dB

### VSWR

<b>Display range</b>	0 to 100
<b>Resolution</b>	0.01

### Distance to fault (DTF)

- **Range** = (number of points - 1)/(span\*2) x Vf (velocity factor in cable) x c (light speed)
- **Resolution** = range/(number of points - 1)
- **Number of points:** 101, 201, 401, 601, 801, 1001
- **Distance to fault display:** Return loss, VSWR

### Cable loss (1-port)

Terminated cable under test with short

### Insertion loss (2-ports)

Requires Option 110

### Transmission measurement (Option 110)

#### Frequency range

<b>Option 104</b>	2 MHz to 4 GHz
<b>Option 106</b>	2 MHz to 6 GHz

#### Dynamic range

<b>2 MHz to 2 GHz</b>	72 dB (typical)
<b>2 GHz to 3 GHz</b>	67 dB (typical)
<b>&gt; 3 GHz to 5 GHz</b>	58 dB (typical)
<b>&gt; 5 GHz to 6 GHz</b>	49 dB (typical)



## Network analysis (Option 303)

<b>S11</b>	Vector measurement, S11 magnitude and S11 phase. Specification is listed under Cable and antenna analyzer section (S11/Return loss).
<b>S21</b>	Scalar measurement, S21 magnitude. Specification is listed under transmission measurement. S21 requires Option 110 transmission measurement.
<b>A</b>	Reflected power
<b>R</b>	Source power
<b>Display</b>	Log, linear, phase, VSWR, Smith chart
<b>Calibration types</b>	
	Mechanical cal
	<b>QuickCal</b>
	Normalization
	Automatic cal update with frequency change or number of points change
<b>IF bandwidth selections</b>	
	300 Hz, 1 kHz, 3 kHz, 10 kHz and 30 kHz

## Spectrum analyzer (Option 230 or 231)

### Frequency

#### Frequency range

<b>Option 104</b>	100 kHz to 4 GHz, usable to 5 kHz
<b>Option 106</b>	100 kHz to 6 GHz, usable to 5 kHz, tunable to 6.1 GHz

#### Frequency reference

<b>Accuracy</b>	±2 ppm
<b>Frequency aging</b>	± 1 ppm/yr
<b>Frequency reference temperature stability</b>	± 1 ppm over -10 to 55 °C

#### Frequency readout accuracy

± (readout frequency x frequency reference accuracy + RBW centering + 0.5 x horizontal resolution)

#### Frequency span

<b>Range</b>	0 Hz (zero span), 10 Hz to maximum frequency
<b>Span accuracy</b>	±(2 x RBW centering + horizontal resolution)
<b>Span resolution</b>	1 Hz

## Resolution bandwidth (RBW)

### Range (-3 dB bandwidth)

<b>Zero span</b>	300 Hz to 1 MHz in 1-3-10 sequence; 2 MHz
<b>Non-zero span</b>	10 Hz to 300 kHz in 1/1.5/2/3/5/7.5/10 sequence; 1 MHz, 2 MHz

### Accuracy

1 kHz to 1 MHz: $\pm 5\%$ (nominal)
10 Hz to 100 KHz non-zero span: $\pm 1\%$ (nominal)
2 MHz: $\pm 10\%$ (nominal)
300 Hz zero span: $\pm 10\%$ (nominal)

<b>Selectivity (-60 dB/ -3 dB)</b>	4:1 (nominal)
------------------------------------	---------------

## Video bandwidth (VBW)

<b>Range</b>	1 Hz to 2 MHz in 1/1.5/2/3/5/7.5/10 sequence
--------------	--

## Stability

### Noise sidebands, CF = 1 GHz

10 kHz offset: -88 dBc/Hz ( typical)
30 kHz offset: -89 dBc/Hz, (typical)
100 kHz offset: -95 dBc/Hz, (typical)
1 MHz offset: -115 dBc/Hz, (typical)

## Sweep acquisition, span > 0 Hz

<b>Range</b>	1 to 5000, number of data acquisitions per trace point; value is normalized to the minimum required to achieve amplitude accuracy with CW signals
<b>Resolution</b>	1
<b>Readout</b>	Measured value representing time required to tune receiver, acquire data, and process trace

## Trace updates

<b>Span = 20 MHz, RBW = 3 kHz:</b>	1.5 updates/second
<b>Span = 100 MHz, RBW auto coupled:</b>	7 updates/second
<b>Span = 6 GHz, RBW auto coupled:</b>	1 update/second

## Trace points

101, 201, 401, 601, 801, 1001 points, default is 401

## Amplitude

### Measurement range

Displayed average noise level (DANL) to +20 dBm

### Input attenuator range

0 to 31 dB, 1 dB steps

### Maximum DC voltage at RF In port

±50 VDC

### Maximum input power at RF In port

+27 dBm (0.5 W)

### Displayed average noise level (DANL)

10 Hz RBW, 10 Hz VBW, 50 ohm termination on input, 0 dB attenuation, average detector

#### Preamplifier OFF

##### 20 to 30 °C

10 MHz to 2.4 GHz	-130 dBm (typical)
> 2.4 GHz to 5.0 GHz	-125 dBm (typical)
> 5.0 GHz to 6.0 GHz	-119 dBm (typical)

#### Preamplifier ON (Option 235)

##### 20 to 30 °C

10 MHz to 2.4 GHz	-148 dBm (typical)
> 2.4 GHz to 5.0 GHz	-145 dBm (typical)
> 5.0 GHz to 6.0 GHz	-138 dBm (typical)

##### -10 to 55 °C

10 MHz to 2.4 GHz	< -141 dBm
> 2.4 GHz to 5 GHz	< -138 dBm
> 5 GHz to 6 GHz	< -130 dBm

### Total absolute amplitude accuracy

Peak detector, 10 dB attenuation, preamplifier off, RBW < 2 MHz, input signal 0 dBm to -50 dBm, all settings auto-coupled

##### 20 to 30 °C

2 MHz to 10 MHz	±1.8 dB	±0.60 dB (typical)
> 10 MHz to 3.0 GHz	±1.5 dB	±0.50 dB (typical)
> 3.0 GHz to 5.0 GHz	±1.9 dB	±0.60 dB (typical)
> 5.0 GHz to 6.0 GHz	±2.1 dB	±0.60 dB (typical)

### Second harmonic distortion (SHI)

-30 dBm signal at input mixer

2 MHz to 1.35 GHz	< -70 dBc, +40 dBm SHI (nominal)
1.35 GHz to 3.0 GHz	< -80 dBc, +50 dBm SHI (nominal)



## Third order intermodulation distortion (TOI)

Two -30 dBm tones at input mixer

< -96 dBc, +18 dBm TOI (nominal)

## Residual responses

Input terminated, 0 dB attenuation, preamplifier off, RBW ≤ 1 kHz, VBW auto-coupled

20 MHz to 3 GHz	-90 dBm (nominal)
> 3 GHz to 6 GHz	-85 dBm (nominal)

## Spurious responses

### Input mixer level -30 dBm

RFsig = RFtune + 417 MHz	-70 dBc (nominal)
RFsig = RFtune + 1.716 GHz	-80 dBc (nominal)

### Input mixer level -10 dBm, first IF image response

RFsig = RFtune – 2 x 0.8346 GHz, for RFtune 5.7 to 6.0 GHz	-50 dBc (nominal)
---	-------------------

<b>Sidebands</b>	-80 dBc (nominal)
	-60 dBc (nominal) when battery charging, 260 kHz offset

## Preamplifier (Option 235 requires Option 230 or 231)

<b>Option 230</b>	100 kHz to 4 GHz
<b>Option 231</b>	100 kHz to 6 GHz
<b>Gain</b>	22 dB (nominal)

## Reference level

<b>Range</b>	-170 dBm to +30 dBm
<b>Resolution</b>	0.1 dB
<b>Accuracy</b>	0 dB (no error)

## Traces

4 traces, data/max/average/min

## Detectors

Normal, positive peak, negative peak, sample, average

## Markers

<b>Marker types</b>	Normal, noise marker
<b>Number of markers or delta markers</b>	6
<b>Marker functions</b>	Peak, next peak, peak left, peak right, marker to center, minimum search

## RF In VSWR

1.5:1 (50 ohm)

## Power meter measurement (Option 302)

### Frequency range

9 kHz to 24 GHz (sensor dependent)

### USB power sensor

9 kHz to 24 GHz, see Agilent U2000 Series USB power sensor specifications for details

## General specifications

### Connector type

Type-N (female)

### Input impedance

50 ohm

### External reference

<b>Input type</b>	BNC female
<b>Reference frequency</b>	10 MHz
<b>Required level</b>	-5 dBm to 10 dBm

### Display

6.5" transfective, color VGA LED backlit 640 x 480 with anti-glare coating

### Speaker

Built-in speaker

### Headphone jack

Built-in headphone jack

### Connectivity

2 x USB 2.0; 1 x mini USB; 1 x LAN

### Internal storage

Minimum 16 MB, up to 1000 traces

### External storage

1 x mini SD slot and 2 x USB 2.0

### EMC

Complies with European EMC Directive 2004/108/EC

- IEC/EN 61326-2-1)
- CISPR Pub 11 Group 1, Class A
- AS/NZS CISPR 11
- ICES/NMB-001

## ESD

- IEC/EN 61000-4-2, functional up to 20 kV test

## Safety

- Complies with European Low Voltage Directive 2006/95/EC
- IEC/EN 61010-1 2nd Edition
  - Canada: CSA C22.2 No. 61010-1-04
  - USA: UL 61010-1 2nd Edition

## Environmental

	Meets MIL-PRF-28800F Class 2 specification
<b>Humidity</b>	95% at 40 °C
<b>Temperature</b>	
<b>Operating</b>	-10 °C to +55 °C
<b>Non-operating</b>	-51 °C to 71°C

## Weight

6.2 lbs / 2.8 kg including battery

## Dimensions (H x W x D)

11.5" x 7.4" x 2.8" (292 x 188 x 72 mm)

## Power

<b>Power supply</b>	<b>External DC input:</b> 15 to 19 VDC
<b>External AC power adapter</b>	
<b>Input</b>	100 to 250 VAC, 50 to 60 Hz; 1.25 to 0.56 A
<b>Output</b>	15 VDC, 4 A
<b>Power consumption</b>	12 W
<b>Battery</b>	6 cell Lithium Ion, 10.8 V, 4.6 A-h
<b>Battery operating time</b>	4 hours

## Languages

English, Chinese, French, Spanish, Japanese, Russian, German, and Italian



## N9912A FieldFox RF analyzer

FieldFox RF Analyzer base functions: One port cable and antenna analyzer (4 GHz), broadband calibration, CalReady, standard mechanical cal kit support. Measurements include: return loss, distance to fault (DTF), one port cable loss and VSWR.

Standard accessories included N9912A: AC/DC adapter; battery; soft carrying case comes with backpack and shoulder straps; Quick Reference Guide; CD ROM with FieldFox Data Link software and full manual

## N9912A FieldFox options

Option 104	4 GHz cable and antenna analyzer
Option 106	6 GHz cable and antenna analyzer
Option 110	Transmission measurement
Option 111	QuickCal
Option 230	4 GHz spectrum analyzer (requires Option 104)
Option 231	6 GHz spectrum analyzer (requires Option 106)
Option 235	Preamplifier for spectrum analyzer (requires Option 230 or 231)
Option 302	External USB power sensor support
Option 303	Network analysis capability
Option 308	Vector voltmeter

## N9910X RF/MW handheld analyzer accessories

N9910X-800	T-Calibration Kit, DC-6 GHz, Type-N(m)
N9910X-801	T-Calibration Kit, DC-6 GHz, Type-N(f)
N9910X-802	T-Calibration Kit, DC-6 GHz, 7/16 DIN(m)
N9910X-803	T-Calibration Kit, DC-6 GHz, 7/16 DIN(f)
N9910X-810	Rugged phase stable cable, Type-N(m) to Type-N(m), 5 ft
N9910X-811	Rugged phase stable cable, Type-N(m) to Type-N(f), 5 ft
N9910X-812	Rugged phase stable cable, Type-N(m) to Type-N(m), 12 ft
N9910X-813	Rugged phase stable cable, Type-N(m) to Type-N(f), 12 ft
N9910X-820	Antenna, directional, multiband, 800 to 2500 MHz, 10 dBi
N9910X-821	Antenna, telescopic whip, 70 MHz to 1 GHz
N9910X-843	Coaxial adapter, Type-N(m) to 7/16 DIN(f)
N9910X-845	Adapter kit: Type-N(f) to 7/16 DIN(f), Type-N(f) to 7/16 DIN(m), Type-N(f) to Type-N(f)
N9910X-860	Fixed attenuator, 40 dB, 100 W, DC-3 GHz, Type-N(m) to Type-N(f)
N9910X-861	Fixed attenuator, 40 dB, 50 W, DC-8.5 GHz, Type-N(m) to Type-N(f)
N9910X-870	Extra battery
N9910X-872	External battery charger
N9910X-873	AC/DC adapter
N9910X-874	External bias-tee, 2.5 MHz to 6 GHz, 1 W, 0.5 A
N9910X-880	Extra soft carrying case with backpack and shoulder strap
N9910X-881	Hard transit case
N9910X-884	Extra N9912A shoulder strap

For more information go to: [www.agilent.com/find/fieldfox](http://www.agilent.com/find/fieldfox)



Directional antenna,  
N9910X-820



Bias-tees, N9910X-874



External battery charger,  
N9910X-872



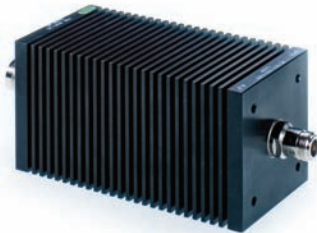
Antenna, N9910X-821



Phase stable cable,  
N9910X-810



AC/DC adapter, N9910X-873



100 Watt attenuator,  
N9910X-860



Adapter kit, N9910X-845



N9910X-800



N9910X-801



N9910X-802



N9910X-803

T-Cal kits

# FieldFox



Soft carrying case with backpack and shoulder straps included with a standard N9912A.  
For an extra soft carrying case order N9910X-880



Hard transit case, N9910X-881

FieldFox fits inside hard transit case



Authorized Agilent Distributor

Click here to Buy:

**TRANSCAT**

800.800.5001  
Transcat.com

Product specifications and descriptions  
in this document subject to change  
without notice.

© Agilent Technologies, Inc. 2008, 2009  
Printed in USA, February 2, 2009  
5989-8618EN