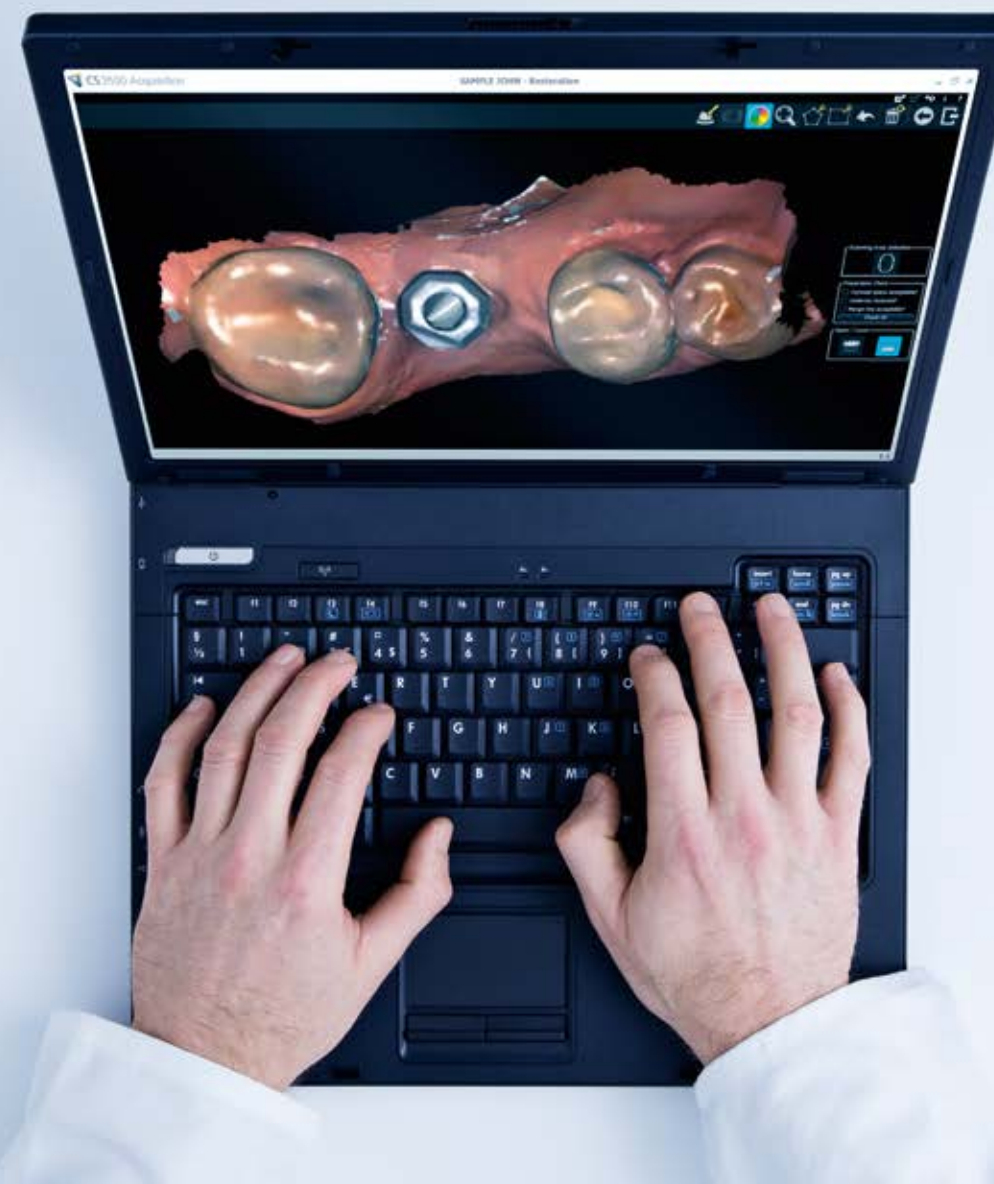


INTRAORAL SCANNER

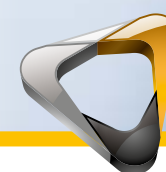


Technical specifications

Components	
Sensor technology:	Effective pixels: 1.3 megapixels
Resolution:	Still image: 1024 x 768 pixels Video: 640 x 480 pixels
Accuracy:	30µm (average precision)
Illumination:	LED: Amber, Blue, Green
Field of view:	16 x 12 mm with normal tip 12 x 9 mm with additional smaller tip
Depth of field:	-2 to +13 mm
Cable length:	2.5 m
Digital connection:	USB 2.0 High Speed
Dimensions without cable:	245 x 37 x 62 mm
Weight:	295 g



CS 3500



Would you like to know more?

Call 800.944.6365 or visit www.carestreamdental.com/solutions
for information about the CS 3500.

WELCOME TO **THE NEW REALITY**

PRECISE, PORTABLE, FLEXIBLE
2D/3D INTRAORAL SCANNING

THE DAYS OF UNCOMFORTABLE IMPRESSIONS ARE OVER



In the new reality, the compact, truly-portable and powder-free CS 3500 intraoral scanner is a true game-changer within digital impression technology.¹ No other scanner can match

it for enhanced patient comfort and workflow efficiency. It allows you to scan your patients' teeth directly and then get high quality, high precision digital results immediately.

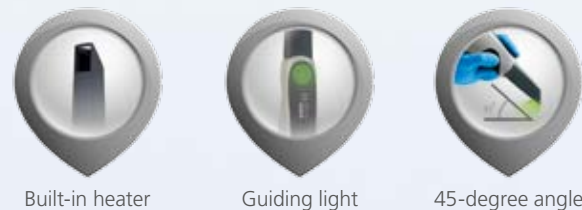
EFFICIENT PATIENT-FOCUSED SCANNING

Now many inconveniences of scanning are removed and you can keep more of your focus on your patient's mouth, instead of your screen. And because the tip is in contact with the tooth, the scanner is easier to use and more comfortable for dentists and patients alike.

- Unique light guidance system that shines green when scanning is successful
- -2 to +13mm scanning depth within a 45-degree angle
- Built-in heater to prevent fogging, streamlining the workflow
- "Sleep mode" saves energy after a period of non-use



Green light emitted from scanner tip indicates a successful scan.



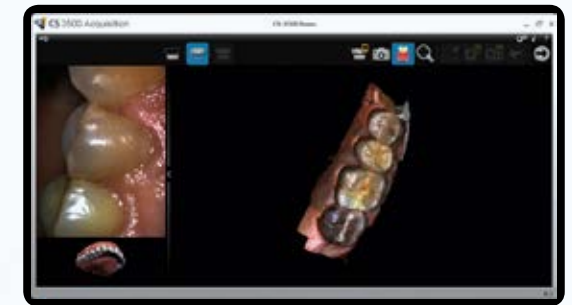
OUTSTANDING QUALITY AND PRECISION

The exceptional image quality enhances the process even further, helping you identify margin lines, contact points and undercuts. A precise cutting tool allows you to draw a free-form shape to select and cut a specific tooth area for simplified rescanning and improved precision.

- True color 2D images and 3D scans clearly distinguish tooth structures from soft tissue and restorations
- Impressive average precision of 30µm and 1024x768 image resolution
- Virtually automatic bite registration
- Little image manipulation required
- Fast capture mode allows for faster dual arch scanning
- Integrated with Carestream Dental's imaging software



2D image capture.



True to life color results from a 3D scan.

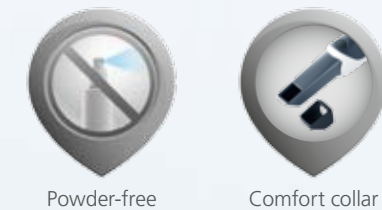
CONVENIENT AND TROLLEY-FREE

Unlike other scanners, the CS 3500 requires no trolley to cart from room to room. It is ergonomically designed, easy to hold and can be easily shared with a USB cable that can be plugged into computers that are already in your operatories.² It includes two sizes of interchangeable scanner tips, which can be autoclaved multiple times and are disposable for proper hygiene and infection control.



COMFORT COMES NATURALLY

Removing conventional impressions from your acquisition workflow is a comfort in itself – for both you and your patients. There's no longer a need to fill your patients' mouths with impression material or to wait for the stone model to set. It's all digital. The scanner also doesn't require scanning powder and is compact with a slim scanner head. A reusable comfort collar provides cushioning to the scanner tip, which allows the scanner to rest on the anterior teeth during scanning while providing additional patient comfort.





OPEN YOUR PRACTICE UP TO CS SOLUTIONS

The CS 3500 works as part of the integrated CS Solutions CAD/CAM restoration portfolio, or as a standalone solution in your practice's restorative workflow. The scanner is compatible with third party CAD programs like 3Shape, Dental Wings, and exocad, and now offers complete integration with exocad software via the patient browser in Carestream's dental imaging software.³ It gives you the flexibility to acquire scans and design restorations in office, or send the digital impressions to the lab.

exocad

dental wings

3shape

Scans acquired by the CS 3500 can be exported as open STL files, and are completely free of indexing, allowing you to freely discuss all restorative possibilities with the lab. Unlike systems that require multiple file exports for a single case, CS 3500 files are delivered in occlusion, which enables you to work from just a single STL file to achieve the best outcomes.



3D design showing the abutment and proposed crown in the laboratory's software.

UPCOMING FEATURES FOR EVEN BETTER SCANNING

We are always working to redefine our products to better match your needs and improve your work.⁵

3D margin line tool

Precisely mark the margin line and adjust it as necessary from the CS 3500 acquisition software, without launching CS Restore. This tool improves communication with the lab in the open workflow.

High definition (HD)

High definition photos will allow the user to capture enhanced image quality with more details to support margin line detection.

Prosthetic-driven implant planning

Complete integration of CS 3500 digital impressions, CS Restore crown design, 3D radiographic imaging and 3D implant planning for comprehensive implant restoration planning.



3D color improvement

Vivid 3D colored images increase margin line detection with more details and can improve case review, analysis and communication.

Mesh viewer

A stand-alone viewer where you can view and check your digital impression after the acquisition is complete.

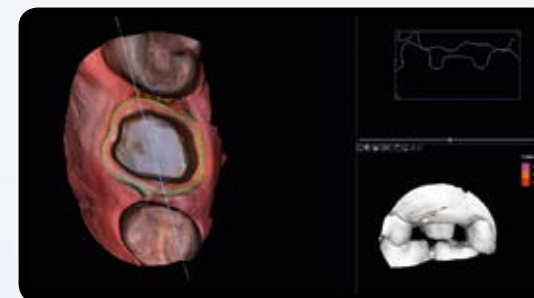


CROWNS

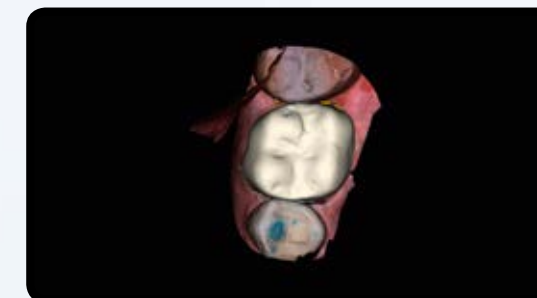
ALL YOU NEED FOR THE PERFECT RESTORATION, AND NOTHING YOU DON'T

What once required a lot of waiting and back and forth can now be scanned, designed and fitted in just one appointment. One-visit crowns are here to stay with our complete CS Solutions portfolio, made possible by the quick, accurate, full-mouth scans of the CS 3500.

Equipped with this intelligent scanner in your practice, there's no longer a need to wait for the conventional impression material to set. More comfortable for both you and patients, it provides all the measurements you need for custom-fit and functional restorations in mere minutes.



Cervical line validation in our CS Restore software.



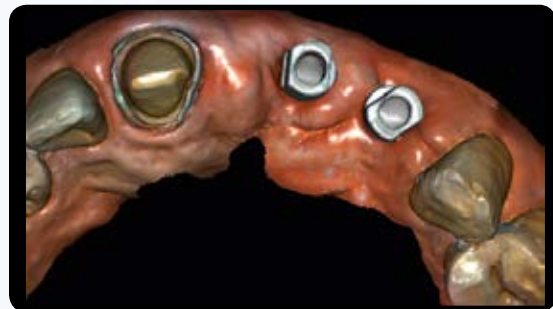
Restoration adjustment in our CS Restore software.

IMPLANTS

DEDICATED TO YOUR PREFERRED WORKFLOW⁴

A dedicated scanning workflow has been designed specifically for implant-borne scanning, supported abutments and scan bodies. Simply place the implant, scan the patient's arch, cut the region and then place the scan body, rescanning only that specific area.

Integrated with our CS Solutions portfolio or open system CAD implant planning and surgical guide software, you'll benefit from highly accurate scans for truly precise implant planning and restorations.



Dual scan mode provides vertical and horizontal precision.

- A step-by-step intuitive interface guides you through acquisition
- Compatible with all scan body libraries and 3rd party software
- Rescan only the area with the prosthetic, not the entire arch

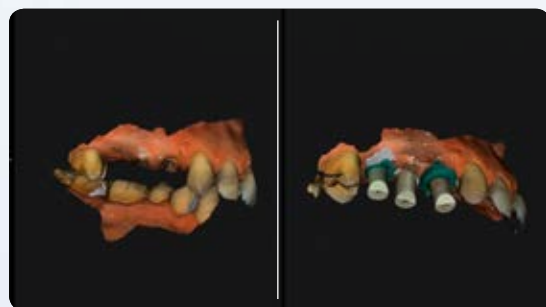
CUTTING-EDGE TOOLS

Dual scan mode allows you to reduce the amount of time spent scanning while allowing for the capture of more precise data. The automatic cloning function eliminates unnecessary repeat scanning, while the cutting tool removes the implant area to simplify image editing and rescanning.



Cutting tool for easy editing and simplified rescanning.

SPLIT SCREEN VIEWING



Split-screen viewing for side-by-side comparisons.

Split screen viewing allows for side-by-side comparisons of digital impressions with and without the scan bodies and/or abutments, providing flexible reviewing options depending on the clinical need.



Split screen viewing

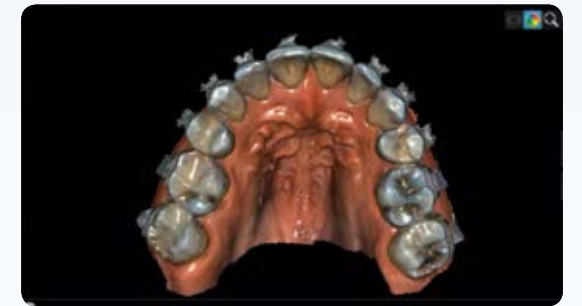
ORTHO

SIMPLIFIED ACQUISITION WITH DIGITAL MODELS

Designed specifically for orthodontics, a simplified interface and dedicated scanning workflow simplify the acquisition process for digital models or orthodontic appliances. You can scan both arches quickly and easily, and bite registration is virtually automatic with little to no manipulation. Without the need for conventional impressions, the CS 3500 creates precise 3D models for your expert review.

CS 3500 scans are accepted by:

- The American Board of Orthodontics
- ClearCorrect™ for the fabrication of clear orthodontic aligner systems⁴
- OraMetrix Inc. for use with suresmile™ technology⁴



Clear, precise images for orthodontic study models and appliances.



CS MODEL SAVES TIME, SPACE AND MONEY

Digital models eliminate the need to create and store physical models, saving valuable time and space in your practice. With CS Model, you can also reduce the cost and lab time associated with traditional models, and produce your own digital models in minutes.

- The model's base and trims are created automatically with fast scanning and maximum productivity
- Models can be viewed from every possible angle, aiding diagnosis, patient consultation and case acceptance
- Easy integration with CS or leading orthodontic imaging, standard imaging and practice management systems



Scan both arches



Bite registration



Digital models