

*New Products*

## S325 Fiber Cleaver

### 1. INTRODUCTION

In the fiber splicing work for FTTH implementation within the users' premises and for LAN implementation, there is a need for a fiber cleaver that is easy to use yet high in reliability. Accordingly, we have developed a new fiber cleaver S325 that features significantly reduced operation procedures while allowing for hand-held operation. The S325 is provided with a waste fiber collection function whereby our conventional cleavers have achieved a high reputation.

### 2. FEATURES

#### 2.1 Appearance

The main body has a form that permits easy hand gripping. The S325 not only allows hand-held cleaving of fibers in various working environments conceivable in any termination splicing, but also enables cleaving with a short length of excess fiber since the cleaver can be brought into a cable closure.



Photo 1 Appearance of S325.

#### 2.2 High Portability

Because of its compact size and light weight, the S325 can be carried to any splicing locations. The S325 comes with an attachable hand strap, which can be used as a precaution against accidental falling of the equipment. You can also use a neck strap to suspend it around your neck.



Photo 2 High portability with a hand strap.

#### 2.3 Compact Size and Light Weight

The S325 has been reduced in weight to nearly 330 g, about 2/3 of our conventional fiber cleaver the S323.

#### 2.4 Ease of Operation

While with conventional fiber cleavers the actions such as the fiber cleaving, waste fiber collection and resetting have to be performed separately, the S325 permits a series of these actions to be performed by a single touch

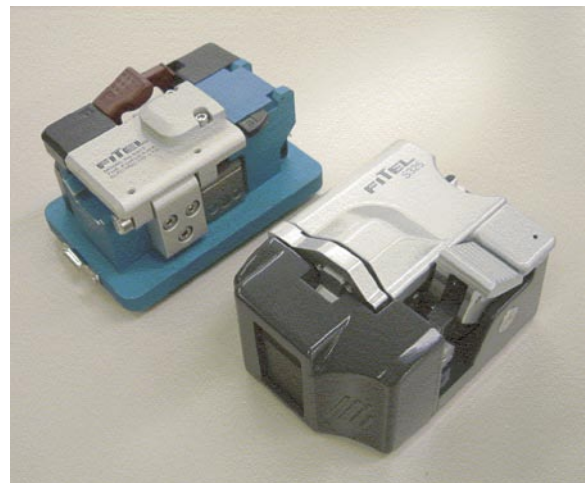


Photo 3 Compact body. S325 on the right and S323 on the left.

of finger. The fiber cleaving actions including waste fiber collection will be automatically completed simply by setting a fiber holder on to the cleaver, closing the lid and pressing the cleaving lever. The cleaving blade is automatically restored to its original position by opening the top lid after a cleaving action. This significantly reduces mistakes in cleaving operation, improving working efficiency.

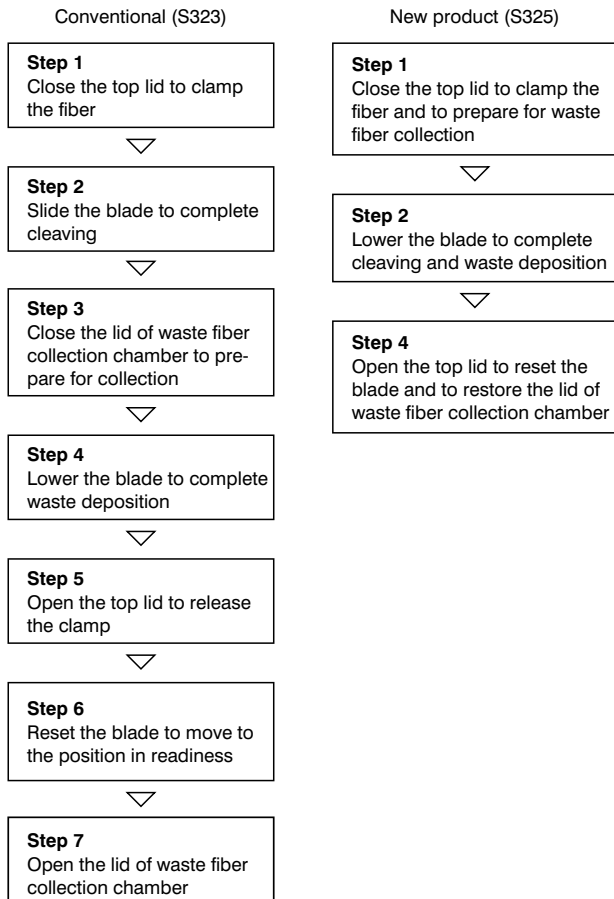


Figure 1 Comparison of operation procedures.

## 2.5 Maintenance

The sliding unit that holds the blade is detachable from the main body, permitting easy exchange of the blade. The height of blade after exchange is adjustable without using any special tool.

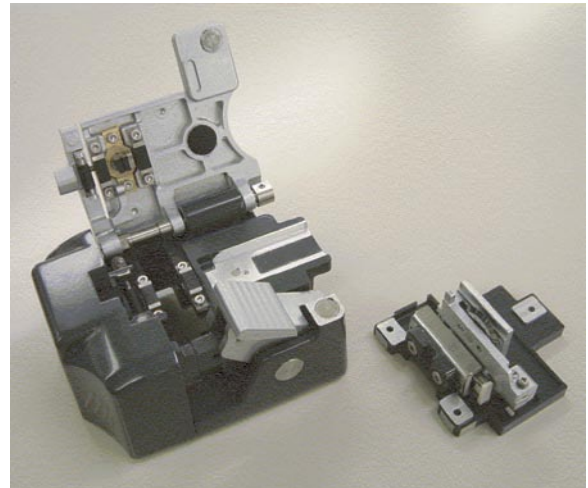


Photo 4 Removal of sliding unit.

## 2.6 Options

Fiber holder system as well as single fiber adaptor can be used.

## 3. PRODUCT SPECIFICATIONS

The S325 is an optical fiber cleaver that realizes fiber cleaving with an average cleave angle of  $0.50^\circ$  or less, eliminating skill requirements.

Table 1 Specifications of S325.

Item	Specification
Applicable fiber	SM single fibers and up to 12 ribbon fibers in 0.25 mm pitch
Optical fiber outer diameter	$\phi 0.125$ mm
Optical fiber coated outer diameter	$\phi 0.25$ mm and $\phi 0.9$ mm
Service life of cleaving blade	32,000 times
Excess fiber length	With holder system: 10 mm; and With single fiber adaptor: 10 mm fixed, 16 mm fixed, or arbitrarily adjustable through 6 to 20 mm
Outer dimensions including protrusions	93(W) x 68(D) x 52(H) mm
Weight	330 g including waste fiber collection chamber

For more information, please contact:

Design & Development Group, Interconnectivity  
Equipment Department, Telecommunications Company  
TEL: +81-3-3286-3445 FAX: +81-3-3286-3708