

COMPAS™

Fluke Compas Specs

Provided by www.AAATesters.com



COMPAS —
DON'T LEAVE
YOUR OFFICE
WITHOUT IT.

WHEN
TROUBLE CALLS,
COMPAS
IS THE ANSWER.

TROUBLESHOOT NETWORK PROBLEMS QUICKLY AND EASILY

Our years of experience in network troubleshooting have enabled us to combine the best features of cable testers, protocol analyzers and network diagnostic utilities into a handheld, portable tool that you won't want to leave your office without.

COMPAS is a network troubleshooting tool for LAN Administrators, network technicians and service providers who respond to LAN trouble calls. Attach COMPAS to a fileserver, workstation, hub or wallplate and COMPAS self-configures to the connection. In just seconds, COMPAS selects and runs the test to solve the problem. And, because COMPAS is completely portable, you can quickly resolve problems right at the problem site.

NETWARE COMPAS

Select the network problem from a simple menu and NetWare COMPAS performs a series of tests designed to identify the cause of the problem. COMPAS can also diagnose problems inside NetWare file servers via the COMPAS NetWare Loadable Module (NLM). NetWare COMPAS troubleshoots Ethernet cabling and protocol and serial link problems too. And, with COMPAS' unique NetTap™ feature, you can insert COMPAS between any network node and the hub to monitor traffic or test the network.

INTERNET COMPAS

Purchase the Internet COMPAS module for your NetWare COMPAS and you can troubleshoot Internet connections and your Intranet quickly and easily too. In addition to the NetWare COMPAS tests, Internet COMPAS allows the user to easily isolate incorrectly configured hosts and determine whether the

problem is a faulty router on your company's Intranet or on the Internet. Internet COMPAS performs tests such as Duplicate IP Address Detection, IP PING, IP Host Summary List and Detail, Internet Control Message Protocol (ICMP) Monitoring and Trace Route. Also included is Domain Name System (DNS) support for simplified troubleshooting, and DHCP support for automatic configuration.

NT COMPAS

Information about your Windows® NT™ network is just seconds away with the optional NT COMPAS module. Just add the module to your NetWare COMPAS and see the domains and hosts on your NT network. NT COMPAS supports IP, NetBeui and IPX protocols and even configures itself from your DHCP server.

Once you've tried COMPAS, you won't leave your office without it.

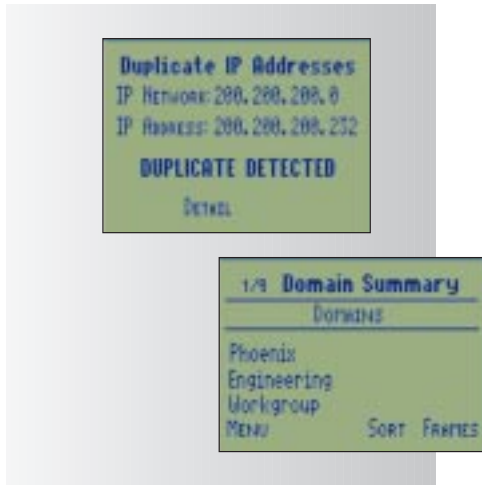


MICROTEST®

800-526-9675

COMPAS

COMPAS PROVIDES COMPLETE NETWARE, INTERNET, INTRANET, AND WINDOWS NT SUPPORT.



NETWARE COMPAS PRODUCT PACKAGE

- COMPAS with rechargeable battery
- Far end adapter
- COMPAS NetWare Loadable Module (NLM)
- User documentation
- RJ45 patch cable
- AC adapter
- Carrying case

INTERNET COMPAS PRODUCT PACKAGE

- Internet COMPAS software
- Serial cable
- User documentation

NT COMPAS PRODUCT PACKAGE

- NT COMPAS software
- Serial cable
- User documentation

SPECIFICATIONS

PART NUMBERS

- NetWare COMPAS #8160-xx*
- Internet COMPAS #8165-xx* (Requires NetWare COMPAS)
- NT COMPAS #8166-xx* (Requires NetWare COMPAS)
- Internet & NT COMPAS #8167-xx* (Requires NetWare COMPAS)

*Call Microtest Sales for U.S. and International part numbers

PHYSICAL

- 10.2 cm x 20.3 cm x 5.5 cm (4" x 8" x 2.15")
- .79 kg 1lb 12oz

POWER

- Removable, rechargeable Ni-Cad battery provides approximately 6 hours of normal use per charge
- AC adapter, 9V, 1 amp (included)
- Optional external charger and additional batteries are available

USER INTERFACE

- 128 x 64 graphic LCD with backlight
- Elastomeric keypad with dedicated major function keys
- Time of day clock
- Audio tone for alarm functions

ENVIRONMENTAL

- Operating temperature: 0°C to 40°C
- Storage temperature: -10°C to 55°C
- Humidity: 10 - 95% non-condensing

MEMORY

- Flash program memory allows field upgrading via serial port

NETWARE COMPAS

- Lists, logs in to, and prints to servers
- Emulates a server for workstation testing
- Provides detailed diagnostics and help for any failures encountered during testing
- Simultaneously supports all four Novell IPX frame types (802.2, 802.3, Ethernet II, SNAP)
- Allows Ping of IPX stations
- With NLM, provides specific details on server, including current Heaviest Server user

INTERNET COMPAS

- Active Duplicate IP Address detection
- Trace Route
- IP Ping
- Summary of hosts and routers on the current subnet
- IP → DNS, DNS → IP Name Resolution
- Current subnet, subnet mask, and available routers
- ICMP monitor shows breakdown of ICMP traffic on the network
- Supports DHCP for automatic configuration

NT COMPAS

- Detects and displays NT domains
- Shows all hosts within a domain
- Identifies the protocols in use by a host or domain
- Pings NT or Windows 95 hosts
- Supports DHCP for automatic configuration
- Supports IPX, IP and NetBeui protocols

CONNECTIONS

- BNC, IEEE 802.3 (Ethernet) compatible
- (2) RJ-45, 10BaseT (Ethernet) compatible
- Automatic selection of BNC and RJ-45 connectors
- Automatic configuration of hub and workstation pairs (TX-RX)
- NetTap RJ-45 circuitry allows insertion between hub and station
 - NetTap yields max. 3dB signal drop between devices. Active tests (transmitting) in NetTap may result in additional error rates.

PROTOCOLS RECOGNIZED UNDER LAN MONITOR

- IPX · DECnet · NetBios · AppleTalk I
- TCP/IP · LAT · ARP · AppleTalk II
- XNS · VINES · ISO

BNC MEASUREMENTS (COAX)

- Length: ± 4%, ± 0.6m (2ft), ± NVP uncertainty 10 to 2000ft
- Impedance: Differentiates major cable types
- Noise: 10 to 500 mVp-p into 5K termination

RJ-45 MEASUREMENTS (EITHER JACK)

- Length: ± 4%, ± 0.6m (2ft), ± NVP uncertainty 10 to 1000ft
- 12 and 36 pairs
- Noise: 10 to 500 mVp-p into 5K termination
- 12, 36, 45, or 78 pair
- LTP period measurement: ± 1mSec.
- Crosstalk: Wide band, ± 40 mV
- Signal Level: Wide Band, ± 40 mV
- Impedance: Differentiates major cable types
- WireMap (Patch cable or to Far End Adapter): Faults are displayed for all 8 wires and shield. Max length 1000ft

SERIAL PORTS

- One male, one female DB9 (pass-through)
- 300 - 57600 baud
- 7 bits even/odd or 8 bits no parity
- Flow control: DTR/DSR, RTS/CTS, xon/xoff

SCREEN PRINT SUPPORT

- HP PCL
- Epson
- Prints to serial port or network queue

PRINTER TEST SUPPORT

- PostScript
- HP PCL
- ASCII Text
- Epson
- Prints to serial port or network queue

OPTIONAL ACCESSORIES

- External fast battery charger
- Additional batteries
- Serial connection kit
- Cable Tracer II



MICROTEST®

Microtest, Inc.
4747 North 22nd Street
Phoenix, Arizona
85016-4708
TEL (602)952-6400
FAX (602)952-6401
E-mail: sales@microtest.com

Microtest Europe
2A Kingfisher House,
Northwood Park
Gatwick Road
Crawley RH10 2XN
TEL: +44 (0) 1293 894000
FAX +44 (0) 1293 894008
E-mail: salesmte@microtest.com
www.microtest.com

©1996, 1997, Microtest, Inc. COMPAS and NetTap are trademarks of Microtest, Inc. Specification and price change privileges reserved. Some of the product names mentioned herein have been used for identification purposes only and may be trademarks and/or registered trademarks of their respective companies. Information subject to change without notice.

