



OneTouch™ Series II Network Assistant

It's Monday morning and network technicians are faced with the usual problems. Who are the top talkers causing congestion? Why can't a user access the server? Who is generating errors? Which devices are running on VoIP? Which switch port is the client connected to? Solving these problems can be a real challenge, especially in today's switched, fast Ethernet and TCP/IP environments. With Fluke Networks' OneTouch Series II, frontline technicians can see beyond the collision domain to quickly locate and resolve network problems.

- **Fast switch discovery** – Locate available interfaces, active ports, MAC, IP, SNMP name and link speed
- **Capture detailed network information** – Locate, view and store 500 stations in the on-board database
- **View instant data** – Pinpoint duplicate IPs, network misconfigurations and physical errors
- **ID vital network statistics** – View Ethernet utilization, collisions and errors
- **Increase network uptime** – Analyze trends with baseline data reports
- **Easy to Use** – Utilize bright display, intuitive user interface and network advice from every screen
- **Reduce travel costs** – Remote monitoring and control via a web browser
- **Perform cable tests** – Identify length, opens, crossed wires, and split pairs
- **Manage the latest technologies** – Active VoIP device discovery and port configuration

Eliminate guesswork and resolve trouble tickets quickly

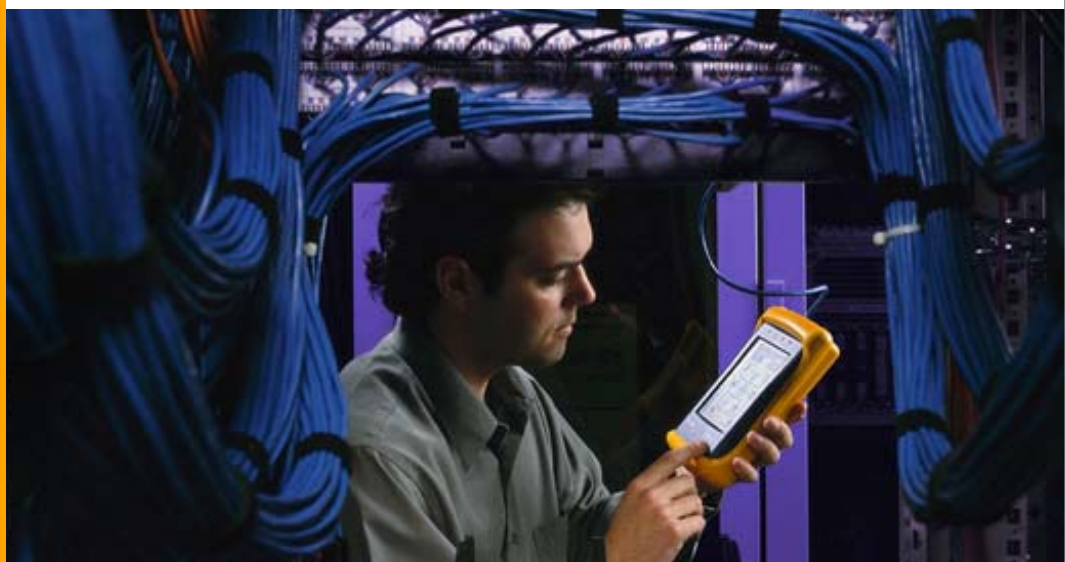
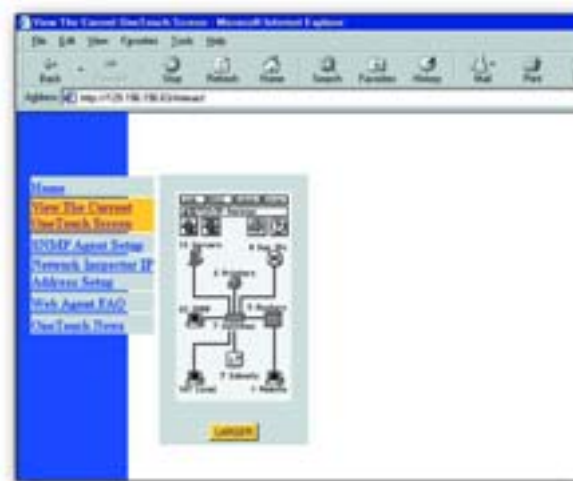
The OneTouch Series II tester automatically identifies Novell®, Windows NT®, and NetBIOS®, NFS, TFTP and LDAP servers. It makes troubleshooting TCP/IP networks easy by graphically displaying TCP/IP servers, printers, routers, and switches, as well as subnets and SNMP devices.

Remote web monitoring and control reduce travel costs

Imagine the time and money you could save if you could ship a test tool to a remote site, instruct a non-technical person how to plug it in, and then monitor and identify problems at that site via your web browser. The OneTouch Series II Pro supports secure remote control in addition to the basic web access available in the OneTouch Series II model.

Configuring a workstation or installing a new phone on VoIP is a snap!

Eliminate the trial-and-error method of workstation configuration. With the touch of the ConfigMaster™ or VoIP icons, access the information you need – DNS server name, IP address range, subnet mask, default gateway, POP3, DNS, and WINS servers, frame type, NetBIOS name, call Managers, H.232 Gatekeepers, IP phones or MGCP call agents.



One touch view of all network components – even switches

Provides information including IP, MAC address and advertised routing protocols.



Connected directly to the Ethernet interface of the modem, the xDSL option measures actual transmission rates and tests the entire xDSL connection – all the way back to the service provider's network.

Fluke Networks Priority Support leads the industry with programs that protect and add value to your investment. When you register for Gold Priority Support, you'll receive unlimited priority technical support seven days a week, 24 hours a day; free software application updates/upgrades; and overnight exchange/loaner units so you'll never be without your OneTouch solution.

[illegible]

Specifications

Media access	10BASE-T and 100BASE-TX
Cable tests	Length, wiremap, split pairs
Ports	Hub/NIC connector (RJ-45) Wiremap connector (RJ-45) RS-232C PC/Printer port (DB-9)
Printer compatibility	HP LaserJet series
Interface	Icon-based touchscreen display
Battery	Removable/rechargeable NiMH battery pack
Dimensions	22.1 cm x 11.8 cm x 6.3 cm (8.7 in x 4.7 in x 2.5 in)
Weight	0.7 kg (1.7 lbs)
Warranty	One year

Ordering Information

Model	Description
1TS2100	OneTouch Series II 10/100 Network Assistant
1TS2100-I	OneTouch Series II 10/100 with ITO Network Assistant
1TS2PRO	OneTouch Series II 10/100 Pro Network Assistant
1TS2PRO-I	OneTouch Series II 10/100 Pro with ITO Network Assistant

Each Fluke Networks OneTouch Series II Network Assistant comes with a rechargeable NiMH battery pack (installed), holster, instrument case, AC adapter/battery charger, remote wire map unit (#1), and CD containing the user manual and utility software.

Options and Accessories

DSP-FTK	Fiber Test Kit
1TS2-ITO Kit	Internetwork Throughput Option
1TS2-PRO Kit	Pro Option for OneTouch Series II 10/100
NIS-1TS2	Network Inspector OneTouch Edition
N6600/NBP	NiMH Rechargeable Battery Pack
N6600/RA	Remote Adapter Set (#'s 2-6)
Fluke-140	Tone Probe
GOLD-1T-2	OneTouch Gold Service Package
1TS2-RPT	OneTouch Reporter Software Package
1T-HCASE	Hard Carrying Case

Take a look at NetTool™ for Inline PC/network connectivity testing



Increase productivity for your frontline technicians and Help Desk troubleshooters with the palm-sized NetTool connectivity tester. Call 1-800-283-5853 (U.S. and Canada) or 425-446-4519. Or visit us online at www.flukenetworks.com

NETWORK SUPERVISION

Fluke Networks, Inc.
P.O. Box 777, Everett, WA USA 98206
(800) 283-5853 Fax (425) 446-5043

Fluke Networks Europe
The Metro Centre, Unit 1, Dwight Road
Watford, Hertfordshire, WD18 9HG U.K.
00800 632 632 00, +44 1923 281 300
Fax 00800 225 536 38

Canada (800) 363-5853 Fax (905) 890-6866
M-East/Africa +44 1923 281 300
Fax +44 1923 281 301
Other countries call (425) 446-4519
Fax (425) 446-5043

E-mail: fluke-assist@flukenetworks.com
Web access: <http://www.flukenetworks.com>

©2002 Fluke Networks, Inc. All rights reserved. Pentium is a registered trademark of Intel Corporation. Visio, Windows and NT are registered trademarks of Microsoft Corporation. IPX is a registered trademark of Novell Corporation. NetBIOS is a trademark of International Business Machines Corporation. Printed in U.S.A. 4/2002 1287921 D-ENG-N Rev E