



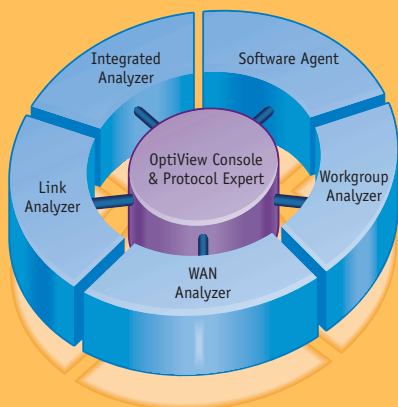
OptiView™ Console

Total integration.

Total control.

Total Network SuperVision.

Our OptiView Network Analysis Solution is a breakthrough in integrated portable and distributed monitoring and analysis hardware and software. It gives you a fast, complete view of your entire enterprise, from portable devices to workgroup analyzers to high-performance gigabit line-rate link analyzers – across multiple vendors. Only OptiView combines the analysis techniques of packet capture, statistical analysis and network discovery to deliver new speed. New ease of use. New depth of vision. New control to optimize the performance of WAN, LAN and wireless networks.



The new **OptiView Console 6.0** gives you a detailed view of your network broadcast domains with a single click of your mouse button. Integrate OptiView Console's (OVC) software discovery agents with Fluke Networks' hardware agents like the OptiView Integrated Network Analyzer, the OptiView Workgroup Analyzer and the OptiView WAN Analyzer to actively monitor and document the performance of your entire network.

Set notification parameters to alert you when a problem occurs and identify the broadcast domain. You'll quickly see whether the problem is on a server, host, switch, router, hub, or printer. Fast and accurate discovery algorithms make network discovery a breeze and network changes are noted in real time.

OptiView Console provides accurate, detailed documentation of your network's performance and configuration to help keep it running at peak performance.

OptiView Console combines your Microsoft Visio® application and its configuration information to generate the best network maps in the industry. You'll also see an extensive array of network reports at the frequency you choose – hourly, daily or weekly. Add the optional RMON Inspector option and get reports based on data from your RMON devices.

OptiView Console integrates with your Sniffer® and CiscoWorks® applications to maintain your existing investment.

Monitor network performance

Monitor the performance of your network from the Overview Tab. See all the discovered agents and the status of the network segments on which they are located. You can also see the Problem Log, a summary of the devices discovered by the agent, and the current utilization of a selected interface. Select an agent to get in-depth information about individual broadcast domains.

Detailed device discovery

OptiView Console quickly discovers devices in the broadcast domain. This device discovery offers visibility into:

- Device type: network devices including wireless access points
- Names: DNS, IPX® Login and NetBIOS® Machine Names
- Addresses: all IP Addresses associated with the node and the MAC Address
- Device services: switching, routing, email, web, and print
- Interfaces: speed and type
- Protocols: IP, IPX, and NetBIOS
- Device interface configuration: speed, type, MTU, slot and port

OptiView Console aids in network troubleshooting:

- Continuous error and change logs on network devices for quick problem isolation
- Event notification via email, pager, or SNMP traps
- Extensive network inventory reports scheduled hourly, daily or weekly
- Network maps document your network configuration (Microsoft Visio not included)
- Database archiving for historical comparisons
- Integration with your Fluke Networks' tools and other third party network monitoring solutions
- RMON support with the optional RMON Inspector

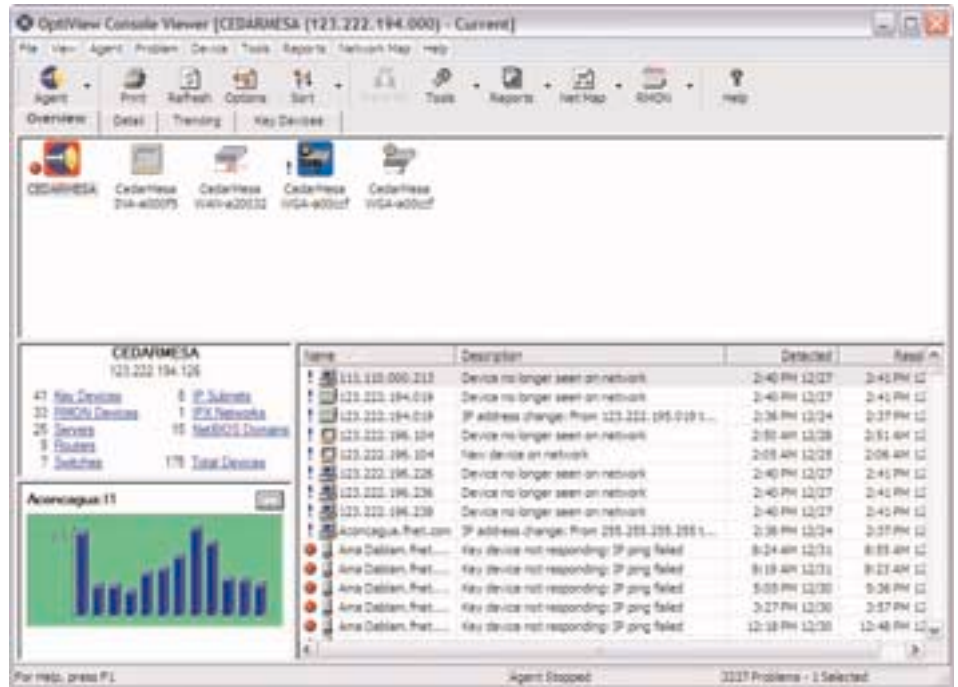
Your window into the Enterprise.

Remote monitoring architecture

OptiView Console uses an agent/console architecture, which enables you to place agents on remote network segments and view the information collected by each agent from a PC on your desk. There only needs to be one agent per broadcast domain. An agent can be an OptiView Console software agent or your Fluke Networks OptiView Analyzer. Purchase extra viewer licenses and other network professionals can monitor the same information from their desktops.

Powerful diagnostic tools

- **Trend utilization, errors, broadcasts, and collisions on all managed device ports for up to 7 days.** The graphical port trending can be sorted by utilization, errors, broadcasts, collisions and interface number. Get detailed statistics information for individual interfaces. Print the results for an individual interface or run a report for the top interfaces by utilization.
- **Use the Trace SwitchRoute™ tool to see device connection paths through a switch.** See the exact path through your switches that two devices use to communicate, including the speed of the links. Double-clicking on the devices in the path will open the device properties window for quick analysis of traffic bottleneck problems.
- **Using your Microsoft Visio® application, generate network infrastructure maps with slot and port number details.** Generate reports on the most heavily used switch and router ports, as well as the devices attached to each switch port.
- **Use OptiView Console's SwitchTap™ software application as a safe, graphical interface for port mirroring and to mirror individual ports to your Fluke Networks OptiView Analyzer or to an entire VLAN.**
- **Add the optional RMON Inspector and run reports based on data collected by your RMON enabled devices.**



Continuously log errors and changes on network devices

OptiView Console automatically looks for devices that are improperly configured, such as those with duplicate IP addresses or incorrect subnet masks. The continuous monitoring power of OptiView Console enables the application to note problems and issues that occur in the broadcast domain, such as servers no longer responding and IP address changes.

Event notification

OptiView Console can be easily set up to generate a page, email, or SNMP trap on device errors and user configurable threshold violations.

Extensive and accurate documentation

The application provides fast, easy, and accurate documentation with an extensive array of reports and network maps. Different maps and reports are available depending on the type of agent used (hardware or software). Schedule reports to be generated hourly, daily, weekly, or produce them as needed. Keep an archive of the reports for comparison of historical network usage.

Customize your OptiView Console reports and network maps using the Logo Tool.

The application works seamlessly with your Microsoft Visio mapping software to create maps showing the links between your servers, routers, hosts, switches and hubs. Map generation is fast and easy. Just select the map you want and OptiView Console does the rest.

The following network maps are available:

- Server Connections in a Switched Network
- Router Connections in a Switched Network
- Switch (Spanning Tree) Diagram
- Fluke Networks Tool Connections in a Switched Network
- Printer Connections in a Switched Network
- Single Switch Detail (3 maps)
 - Printers
 - Hosts
 - Routers, Switches, and Servers

History

In addition to archiving reports, you can schedule database archiving on a daily or weekly basis. Restoring an archive is as easy as a mouse-click.



Total integration with your Fluke Networks tools and third party solutions

Whether you're using your OptiView Analyzers as agents or probes, the OptiView Console application automatically discovers them on your network. You can specify the number of router hops that OptiView Console will go to look for Fluke Networks tools. You can start the remote user interfaces for these devices and use them to troubleshoot the problems to which the application has alerted you.

The OptiView Console application protects your investment in other network tools by discovering Sniffer® and CiscoWorks® enabled devices. You can then launch SniffView® and CiscoWorks® from the OptiView Console application. You can also trend your Sniffer interfaces.

Run RMON studies

Utilize the capability of your RMON enabled devices with the optional RMON Inspector application and get an extensive array of RMON reports. Click on an RMON device and select from the following:

- Quick View
- Utilization
- Errors
- Top Users
- Top Users Matrix
- Top Applications
- Host Network Layer
- Matrix Network Layer
- Quick Alarm
- Ethernet History
- RMON Events
- SNMP Trap Configuration

Minimum requirements

The minimum system requirements needed to run the application on your PC are:

Operating system	<i>Any of the following:</i>
	- Windows NT 4.0 Workstation SP6 or later
	- Windows NT 4.0 Server SP6 or later
	- Windows NT 4.0 Terminal Server Edition SP6 or later
	- Windows 2000 Professional SP1 or later
	- Windows 2000 Server SP1 or later
	- Windows 2000 Advanced Server SP1 or later
	- Windows XP Professional
Languages	<i>On any of the supported Operating systems:</i>
	- English
	- German
	- Japanese
	- Simplified Chinese
System RAM	384 MB
Processor	400 MHz
Browser	Windows Internet Explorer 5.00.2314.1003 or later
Disk space	200 MB system disk 300 MB install disk

Note: The requirements listed here are the minimum necessary to run the basic application on a small or medium size network. A very large network or other factors (e.g. the number of database archives stored) would require increased processing power or memory for acceptable performance of the application.

Ordering Information

Model	Description
OVC	OptiView Console, unrestricted software agent deployment, one viewer, up to 2,000 nodes monitored with software agents
Options at initial product purchase	
OVC-N1K	Monitor 1,000 additional nodes with OptiView Console software agents
OVC-RMON	RMON Inspector option for OptiView Console
OVC-VIEWER	License for an additional OptiView Console viewer
Options after initial product purchase	
OVC-N1K-S	Monitor 1,000 additional nodes with OptiView Console software agents
OVC-RMON-S	RMON Inspector option for OptiView Console
OVC-VIEWER-S	License for an additional OptiView Console viewer

NETWORK SUPERVISION

Fluke Networks
P.O. Box 777, Everett, WA USA 98206-0777

Fluke Networks operates in more than 50 countries worldwide. To find your local office contact details, go to www.flukenetworks.com/contact.

©2003 Fluke Corporation. All rights reserved.
Printed in U.S.A. 3/2003 2062599 D-ENG-N Rev A