

Network Inspector™

New
Version 5.0
Features

Quick, complete network visibility, essential switch diagnostics and comprehensive integration with Fluke Networks tools – it's Network SuperVision™ in a box

Network Inspector is a unique monitoring solution that actively monitors and diagnoses problems in TCP/IP, IPX, and NetBIOS environments. Designed for Ethernet LANs, Network Inspector quickly identifies whether the problem is on a server, client, switch, router, or printer with its fast discovery and clear network display. With one press of a button, you can walk away with an inventory report on your IP, IPX, or NetBIOS devices, and the services they provide.

Network Inspector is designed with a monitoring agent and viewing console architecture. Agents can be distributed on the network, each monitoring a broadcast domain and one or more consoles can remotely access data collected by those agents.

Network Inspector's integrated **SwitchTap™** feature mirrors an entire VLAN or one or more switch ports quickly and easily, reducing the time and effort required to safely configure port mirroring. In addition, discovered devices can be searched and selected by device type, such as routers or servers, discovered device name or IP address.

Network Inspector's **comprehensive integration with other Fluke Networks tools** such as OptiView™, OneTouch™ and Enterprise LANMeter™ provides advanced network discovery.

Features

Detailed Device Discovery

Network Inspector quickly discovers devices in the broadcast domain. This device discovery offers visibility of:

- Type/Names: DNS, IPX® Login and NetBIOS® Machine Names
- Addresses: all IP Addresses associated with the node and the MAC Address
- Services running: switching, routing, email, web, and print
- Interfaces: speed and type
- Protocols: IP, IPX, and NetBIOS
- Device interface configuration including speed, type, MTU, slot and port

Network Inspector's Device Discovery also provides:

- Continuous error and change logs on network devices for quick problem isolation
- Solutions to network problems
- Event notification via email or pager
- Printed and HTML-formatted network inventory reports, including IP, IPX and NetBIOS

Switch Diagnostics

Network Inspector's SwitchTap™ allows you to mirror individual ports to a Fluke Networks OptiView™ Integrated Network Analyzer or to an entire VLAN. You can trend utilization, errors, broadcasts, and collisions on all managed device ports in 1-hour and 7-day increments. (7-day trending provides 24-hour, 12-hour, and 6-hour views.) Use Trace SwitchRoute™ to see device connection paths through a switch.

Automatically draw network infrastructure maps with slot and port number details, using Microsoft® Visio. Generate reports on the most heavily used switch and router ports, as well as the devices attached to each switch port.

Remote Monitoring Architecture

Network Inspector uses an agent/console architecture which enables you to place an agent on a remote segment and look at the information collected by this agent via a console on your desk. There only needs to be one agent per broadcast domain. Data is stored in a Microsoft® Access database. Other network professionals can access the same information via Network Inspector consoles on their desktops.



Network Monitoring Software

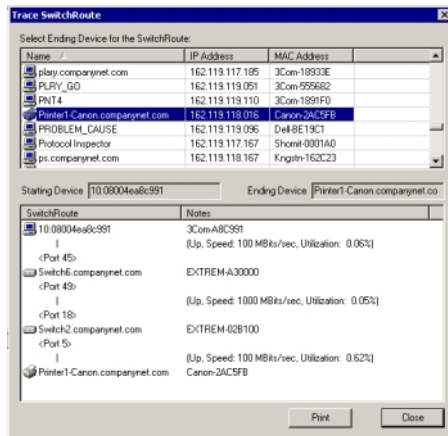
Technical Data

Powerful switch diagnostics

Network Inspector's graphical switch port trending can be sorted by the most heavily utilized ports and published on paper or on the web. Reports are updated every two minutes.

Unique Trace SwitchRoute™ Tool

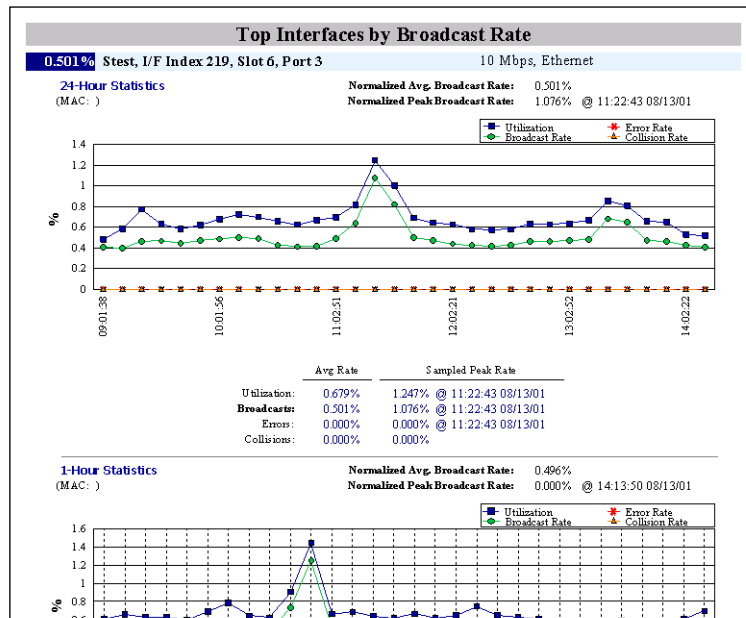
Trace SwitchRoute allows you to see the exact path through your switches that two devices use to communicate, including the speed of the links. Double-clicking on the devices in the path will open the device properties window for quick analysis of traffic bottleneck problems.



Trace SwitchRoute shows the switch path connecting a host to a laser printer.

Continuously log errors and changes on network devices

Network Inspector automatically looks for devices that are improperly configured, such as those with duplicate IP addresses or incorrect subnet masks. The continuous monitoring power of Network Inspector enables the application to note problems and hangs that occur in the broadcast domain such as servers no longer responding and IP address changes.

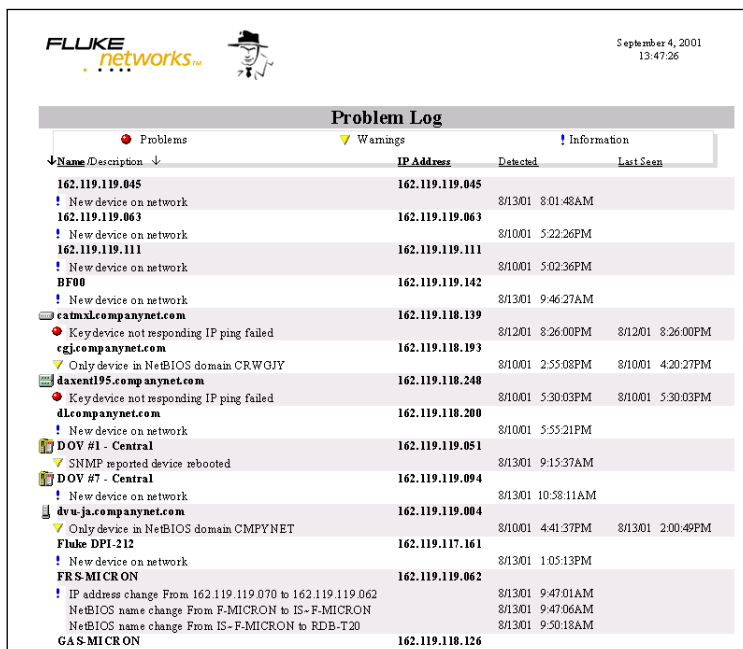


Event notification

Network Inspector can be easily set up to generate a page or email on device errors and threshold violations.

Fast documentation

All of the discovery power of Network Inspector can be published in both standard format and html. Network Inspector provides easy documentation with IP, IPX and NetBios inventory reports showing names, addresses, and services.



Solid integration with tools from Fluke Networks

Network Inspector will automatically find the OptiView™ Integrated Network Analyzer, the Enterprise LANMeter®, the OneTouch™ Series II Network Assistant, and the 69x Traffic Analyzers on your network. You can launch the control applications for these devices and remotely control or acquire data from them.

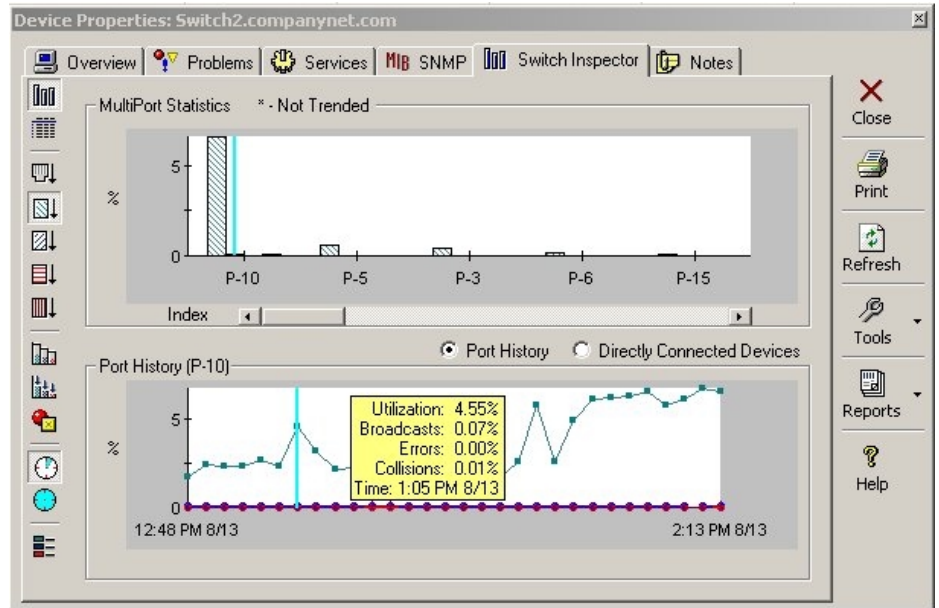
The reporting software can remotely initiate tests on the analyzers and generate test reports from the data collected in .xls, .doc, html and other formats.

Spending hours manually creating a diagram of your network?

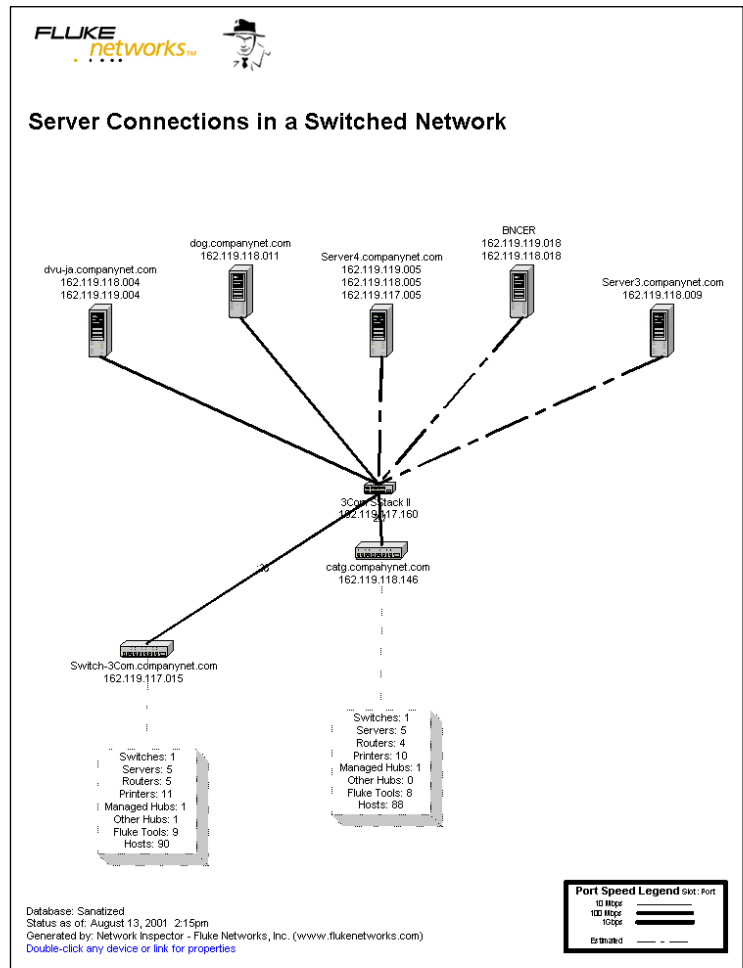
Network Inspector automatically discovers the devices in a broadcast domain. Discovered data is collected, then automatically exported to Microsoft Visio and a network map is created, showing the links from servers, routers and PCs to switches and hubs. Generation of network drawings is quick and easy. Use Network Inspector with the OptiView Integrated Network Analyzer to get automated diagrams of your remote sites, too!

NetMap diagrams

- Server Connections in a Switched Network (sample map shown at right)
- Router Connections in a Switched Network
- Switch (Spanning Tree) Diagram
- Fluke Networks Tool Connections in a Switched Network
- Single Switch Detail
- Connected Printers
- Connected Hosts
- Connected Routers, Switches, Servers
- Printer Connections in a Switched Network



One hour traffic trend.



NetMap

Minimum system requirements

English, Japanese and German versions of the following:

- Windows® 98 2nd Edition, Windows Millennium, Windows NT 4 (Service Pack 5 and up), Windows 2000 (Service Pack 1 and up), Windows XP Professional Edition
- 200 MHz Pentium II processor
- 64 MB RAM
- 150 MB Virtual Memory
- 100 MB hard disk space

Microsoft® Visio supported

- Version 5.0, 2000 and 2002.

Note: Visio is required for drawing NetMap diagrams.

Gold Priority Support

Protect your investment with our premium annual support package and receive:

- Technical support.
- Free software upgrades/updates.

Ordering Information

| Model | Product Description |
|----------|---|
| NIS-250 | Network Inspector 250 Node Discovery across multiple sites, 1 Console License |
| NIS-1000 | Network Inspector 1000 Node Discovery across multiple sites, 5 Consoles Licenses |
| NIS-UNL | Network Inspector Unlimited Discovery across multiple sites, 10 Consoles Licenses |
| NIS-OPV | Network Inspector OptiView Edition. Unlimited Node Discovery across multiple sites, 1 Console License and OptiView Reporter |
| NIS-ILM | Network Inspector Enterprise LANMeter Edition. Unlimited Node Discovery across multiple sites, 1 Console License and 68X Reporter |
| NIS-1TS2 | Network Inspector OneTouch Edition. Unlimited Node Discovery across multiple sites, 1 Console License and OneTouch Reporter |
| NIC-1 | Network Inspector 1 Console License Upgrade |
| NIN-50 | Network Inspector 50 Node License Upgrade |

Available Accessories and Options

| Model | Accessory or Option Description |
|----------|--------------------------------------|
| 1TS2-RPT | OneTouch Series II Reporter Software |
| OPV-RPT | OptiView Reporter Software |
| 68X-RPT | LANMeter Reporter Software |

Download your free
14-day trial at
www.flukenetworks.com/ni

NETWORK SUPERVISION

Fluke Networks, Inc.
P.O. Box 777, Everett, WA USA 98206-0777

Fluke Europe B.V.
P.O. Box 1186, 5602 BD
Eindhoven, The Netherlands

For more information call:
U.S.A. (800) 283-5853 or
Fax (425) 446-5043
Europe/M-East/Africa (31 40) 2 675 200 or
Fax (31 40) 2 675 222
Canada (800) 363-5853 or
Fax (905) 890-6866
Other countries (425) 446-4519 or
Fax (425) 446-5043
E-mail: fluke-assist@flukenetworks.com
Web access: <http://www.flukenetworks.com>

©2001 Fluke Networks, Inc. Pentium is a registered trademark of Intel Corporation. Access, Visio, Windows and NT are registered trademarks of Microsoft Corporation. IPX is a registered trademark of Novell Corporation. NetBIOS is a trademark of International Business Machines Corporation. All rights reserved.
Printed in U.S.A. 9/2001 1272029 D-ENG-N Rev E