

# HeatSeeker® Thermal Imagers



[Ideal HeatSeeker Specs](http://www.AAATesters.com)  
Provided by [www.AAATesters.com](http://www.AAATesters.com)

- Troubleshoot potential problems quickly
- Auto hot/cold tracker
- Image blending of thermal and digital
- Picture-in-picture
- Large widescreen display
- Mark images with text and voice annotation
- Sequence image recording



Adjustable blended view  
for ease of use



# HeatSeeker® Thermal Imagers



Troubleshoot and identify potential problems before they happen with the **IDEAL HeatSeeker® Thermal Imagers**. What makes HeatSeeker® so useful are the dual cursors that instantly locate the hottest and coldest temperatures on a live screen, and the camera's ability to blend a thermal image on top of a digital image for easy on-the-job decision making. The HeatSeeker® Thermal Imager's easy set-up and operation make it a cost-effective tool for electrical service, industrial maintenance, building inspection and data center mapping.

## Features

- Blended thermal/digital image
- Picture-in-picture
- Thermal burn-through above/below threshold set
- Hottest/coldest temperatures displayed instantly on live screen
- Mark images with text and voice annotation
- Sequence image recording up to every hour or by alarm settings
- IP54 rated to resist dust and water
- Built-in LED illuminator
- Withstands a six foot (2m) drop
- Laser Pointer
- High and low temperature alarms
- Adjustable emissivity for maximum accuracy
- Accuracy of +/- 2°C or ±2%
- Multilingual – Nine languages included
- Long battery life
- Tripod mountable
- Carrying case included
- ThermalVision™ PC software included
- Automatic report generator
- 2-year warranty



**61-848**  
320 x 240

**61-846**  
160 x 120

Removable battery



**61-844**  
47 x 47

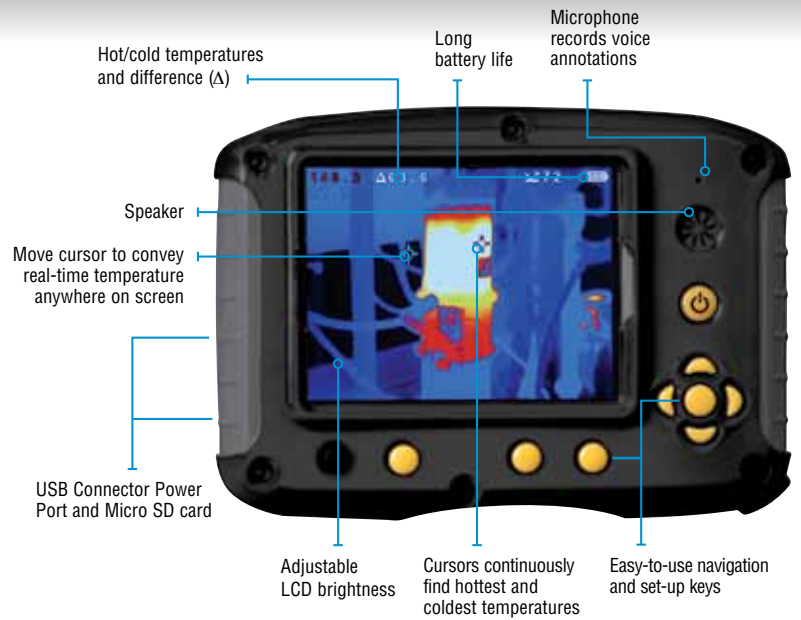
Removable handle



Side door allows quick access to headphone, USB connection, and removable Micro SD card

## HeatSeeker® Thermal Imaging Camera Specifications

Feature	HeatSeeker® (61-844)	HeatSeeker® 160 (61-846)	HeatSeeker® 320 (61-848)
Temperature Range	14°F to 662°F (-10°C to 350°C)	-4°F to 1652°F (-20°C to 900°C)	14°F to 482°F (-10°C to 250°C)
Temperature Accuracy	±2°C or ±2% of reading		
Emissivity Table	0.2 to 1.0 (adjustable)		
Cursors	Two-movable	Four-movable (with independent emissivity setting)	
Image Storage (2 GB micro SD card)	2000 Images		
Field of View	20° x 20°	10° x 15°	21.4° x 16°
Thermal Sensitivity (NETD) at Stated Target Temp	≤ 0.15°C at 30°C (150mK)	≤ 0.08°C at 23°C (80mK)	
Level & Span	Automatic & Manual Scaling		
Focal Plane Array	47 x 47 (2,209 pixels)	160 x 120 (19,200 pixels)	320 x 240 (76,800 Pixels)
Display	3.5" LCD		
Visible Light Camera Resolution	1.0 Megapixels	2.0 Megapixels	
Spectral Range	8µm to 12µm	8µm to 14µm	
Minimum Focus Distance	20in (50cm)	12 in (30cm)	
Spacial Resolution (IFOV)	7.4mRad	2.2mRad	1.17mRad
Image Palette	Ironbow, Rainbow, Isotherm, Hot Metal, High Contrast, Rainbow 16, Black Hot and White Hot		
Focus	Manual		
Battery Life	6 hours	5 hours	4 hours
Power	Internal rechargeable Li-ion battery	Field replaceable, rechargeable Li-ion battery	



### Adjustable Blended View for Ease of Use

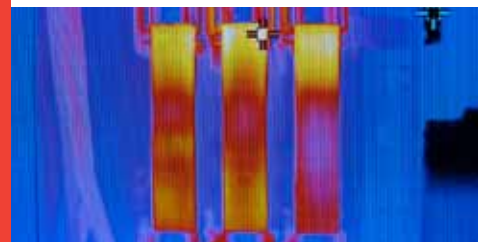
The HeatSeeker® captures both a full infrared image and a visual photo. The thermal image can be overlaid on top of the visual image in various % blends, as picture-in-picture or **select the NEW Thermal Above/Below blending feature to scan in full visible mode. Thermal will burn through the image only at the precise areas of concern.**



100% VISUAL

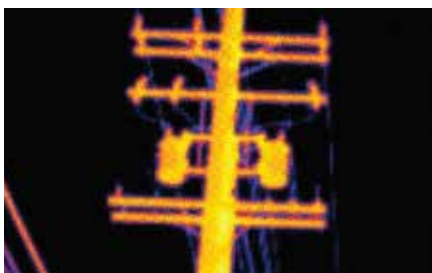


NEW! THERMAL BURN THROUGH



100% THERMAL

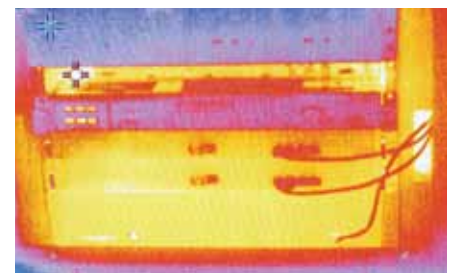
### Provides Real-time Analysis for:



Electrical Safety



Energy Efficiency



Data Center Thermal Mapping



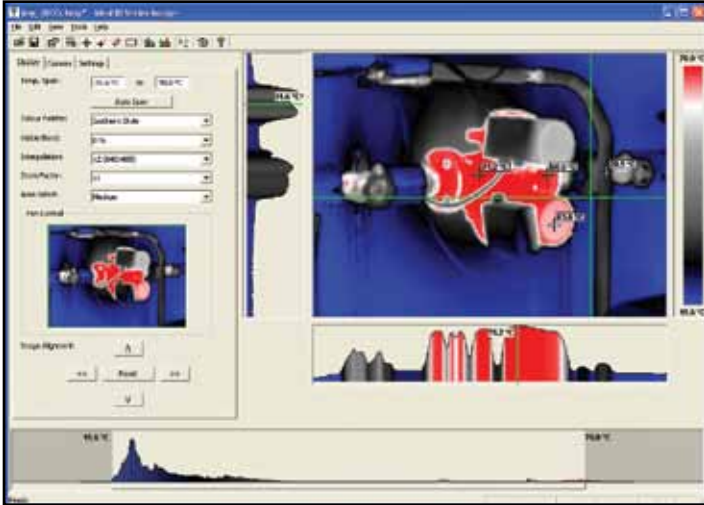
Preventive Maintenance



Building Maintenance



# Accessories



## ThermalVision™ PC Software Included

Easy-to-use software allows image download to PC for analysis.

### Features

- View, edit and analyze images
- Automatic report generating capabilities
- Disk also includes user manual



**61-846**

## Accessories

Includes	61-844	61-846 / 61-848
Removable Battery	—	<b>61-846BAT</b>
USB Cable	<b>61-844USB</b>	<b>61-846USB</b>
Camera Handle	<b>61-844HAN</b>	—
Carrying Case	<b>61-844CC</b>	<b>61-844CC</b>
Power Supply	<b>61-844PS</b>	<b>61-848PS</b>
ThermalVision™ Software	<b>61-844SW</b>	<b>61-846SW</b>
Optional	61-844	61-846
Light Shade	<b>61-844LS</b>	<b>61-844LS</b>
Car Charger	<b>61-844CAR</b>	<b>61-848CAR</b>
Desktop Charger	—	<b>61-846DT</b>
Hard Transport Case	<b>61-846HC</b>	<b>61-846HC</b>

**For Level I Certified Infrared Training Information Visit:  
[www.idealheatseeker.com](http://www.idealheatseeker.com)**

**IDEAL INDUSTRIES, INC.**

1375 Park Avenue, Sycamore, IL 60178, USA / 815-895-5181 • 800-435-0705 in USA / Technical Hotline: 877-201-9005

International offices: Australia • Brazil • Canada • China • Germany • Mexico • Puerto Rico • UK

For complete sales office contact information, visit us at:

[www.idealindustries.com](http://www.idealindustries.com)