

Ideal LT8600 SingleMode Multimode Specs

Provided by www.AAATesters.com

LT-GRAPHICAL ANALYZER SOFTWARE



LT-Graphical Analyzer.

Wavetek Wandel Goltermann has developed the LT Graphical Analyzer (LTGA) software to help installers handle the increasing demand for graphical data storage and reporting.

As bandwidth requirements increase, testing frequency has increased and additional data intensive tests have been implemented. LTGA has been designed to simplify the review, reporting, and storage of these tests for the installer.

LTGA is designed to complement the capabilities of the LT 8600. The LTGA software gives the user direct access and control over the tester's Autotest functions from within a Windows-based Graphical User Interface, running on the user's PC or laptop computer.

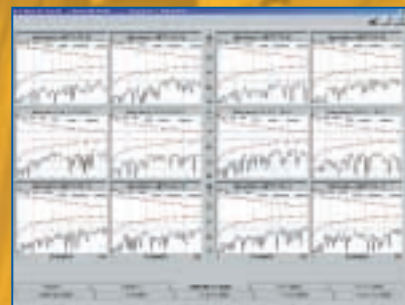
The powerful graphical software allows the operator to view the test results in a graphical format. It enhances problem diagnosis and troubleshooting.

CONTROL AND EVALUATION SOFTWARE FOR THE LT 8600

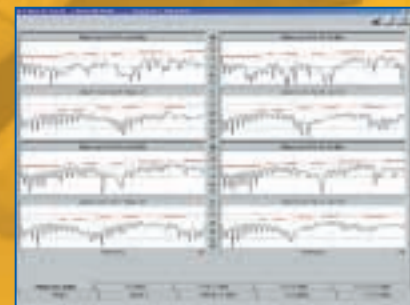
by enabling the operator to instantly visualize the amount of margin available instead of having to interpret less intuitive tabular data. The package includes:

- CD-ROM containing the graphical analyzer software package LTGA and the record manager software package LTRM
- Adapter for optical isolation and software protection (dongle/cable)
- User manual/quick start guide

Clearly arranged graphical data available on screen



Comprehensive Printouts of all Results.



TDR

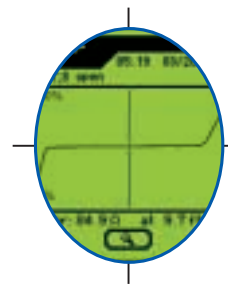
Time Domain Reflectometer (TDR)

The advanced TDR function available in the LT 8600 is designed to provide the operator with an easy to use in-depth analysis capability. The TDR can help find and resolve post-certification problems, determine length of the cable runs and identify embedded connectors in the horizontal cables.

The LT 8600 TDR provides a continuous reading of the link conditions, enabling immediate real time analysis of the impacts of any changes, such as disconnecting the connectors.

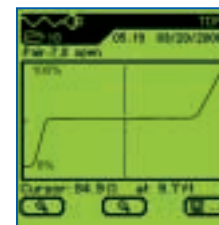
The LT 8600 TDR user interface provides a real time graphical display of impedance versus distance for the selected pair of wire.

TIME DOMAIN REFLECTOMETER (TDR)



TDR-OPTION ALLOWS FOR THE STORAGE AND RETRIEVAL OF TDR DATA

The display also contains a vertical line cursor which can be positioned by the operator at any position along the graph and zoom in for better resolution.



The LT 8600 tester comes with the TDR capability as a standard feature. For the installed base which may not have the TDR, there is an upgrade kit available from the factory.

Ordering Information

LT 8600 Series Standard Kit

- (1) Display Handset
- (2) Remote Handset
- (3) NiMH Batteries (2 ea.)
- (4) PC Utility Software and LT Record Manager
- (5) User's Guide
- (6) Soft Carrying Case
- (7) Hanging Strap
- (8) AC Wall Adapters (2 ea.)
- (9) Field Calibration Adapter
- (10) Channel Link Adapters (2 ea.)
- (11) Basic Link Adapters (2 ea.)
- (12) Serial Interface Cable

Accessories and Options

- LT8BASIC Set of 2 CAT 5/5E Basic Link Adapters
 LT8CHANNEL Set of 2 Channel Link Adapters
 LT8110 Set of 2 110-Block Adapters
 LT81BMA Set of 2 Token-Ring Adapters

- LT8COAXA Coaxial Link Adapters Kit
 LT8BTCHG120 120V dual-bay quick battery charger
 LT8BTCHG240 240V dual-bay quick battery charger
 LT8TALKSET Set of 2 earphone/microphone headsets
 LT8BATTPACK Extra NiMH battery
 LT8DCCA Deluxe hard-shell carrying case
 LT8KIT Professional installer's kit (Includes all of above with (2) batteries)
 FiberKit+850 Fiber optic cable test kit: Includes power meter and 850nm Multimode LED light source modules, ST adapters, user guide, and case
 FiberKit+MM Same as above except with Dual Wavelength 850nm/1300nm LED Light Source module
 FiberKit+ALL Includes all of +MM kit above, plus 1310nm and 1550nm Single-Mode laser light source modules
 542SP Tone sensing speaker probe
 LTGA Powerful graphical analyzer software package

© 2000 Wavetek Wandel Goltermann
 Specifications subject to change without notice.
 LASDBR010400AE

B36 4/00

The LT 8600 LAN Cable Tester. Ready for CAT 6/Class E Testing

Wavetek
Wandel
Goltermann
Sales Offices

North & South America
 9145 Balboa Avenue
 San Diego, CA 92123, U.S.A.
 Tel: (1) 858-279-2955
 Fax: (1) 858-278-5141
 Toll free: (800) 854-2708

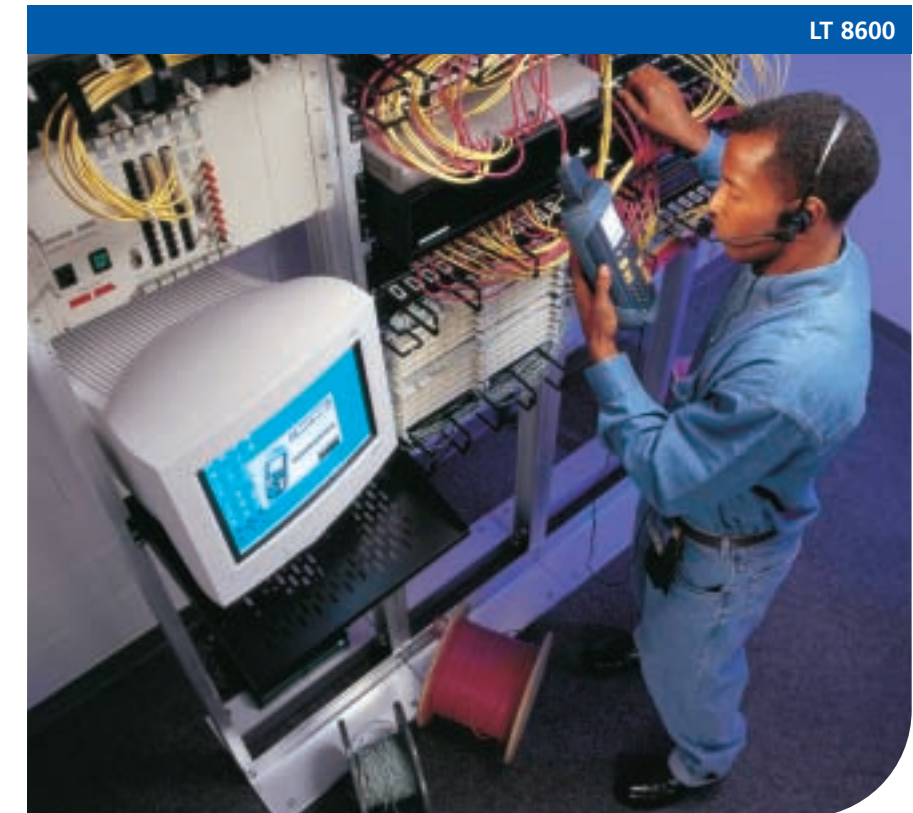
Germany
 Tel: (49) 89-996-410
 Fax: (49) 89-996-41160

Asia
 Tel: (61) 3 9690 6700
 Fax: (61) 3 9690 6750

United Kingdom
 Tel: 0800-1693657 (Freefone)
 Fax: (49) 89-996-41413

Web Site:
www.wvgsolutions.com

E-mail:
lansupport@wvgsolutions.com



**WAVETEK
WANDEL
GOLTERMANN**
 Communications Test Solutions

**WAVETEK
WANDEL
GOLTERMANN**
 Communications Test Solutions



Quality and Service the Ultimate Commitment
 A leading manufacturer of test and measurement equipment, WVG is dedicated to bringing you the most performance at the best price. This commitment to quality and value is supported by a worldwide sales and service network that has complete satisfaction as its ultimate goal.

The LT 8600 is a 300 MHz Level III High Performance Cable Tester That Exceeds the Requirements for Emerging CAT 6/Class E Testing Standards

CAT 6/Class E testing is gaining momentum. Be prepared for the new test requirements with the LT 8600. The LT 8600 allows you to perform required tests, including tests for emerging CAT 6/Class E standards, helping you keep pace with new opportunities.

CAT 6 Adapters

Many component manufacturers have "fine tuned" their plug/jack combinations in order to meet the proposed CAT 6/Class E specifications. The resulting issues of interoperability and backwards compatibility are currently hot topics within the various standards committees around the world. However today, it means that most CAT 6 cabling systems have to be tested using test adapters that are "matched" to the system under test. WWG offers a broad range of manufacturer specific CAT 6 adapters available and new adapters are being added as we get materials and approvals from the various manufacturers.

LT 8600 LAN CABLE TESTER



MOST ADVANCED INSTRUMENT IN THE WWG FAMILY OF CABLE TESTERS "THE LT 8600"

Proven Reliability and Durability

The LT 8600 offers unmatched reliability and accuracy. Built to withstand the most rugged of work conditions, every WWG LAN cable tester is field-ready.

- Test up to 300 MHz exceeding the requirement for emerging CAT 6/Class E standards
- Perform all advanced Power Sum measurements up to 300 MHz
- Support Distance-to-Fault with TDR technology
- LT-Record Manager software supports all record keeping, reporting and certification requirements
- Options for Single-mode and Multimode fiber optics

Full Duplex Talkset

Enables full duplex voice communications between near end and far end over any "good" pair during installation.

Custom Cable Capability

The LT 8600 comes with pre-programmed cable types. In addition you can create a Custom Cable by defining your set of tests. As many as ten custom cable settings can be created.

Integrated Toner

An integrated toner allows verification of cable continuity and the ability to trace cables through walls, floors and ceilings. The warble test tone is detectable by most standard wire tracing amplifiers.

Battery Charger

Recharge quickly and enhance your batteries life utilizing this external battery charger unit.



FIBERKIT+



SINGLE - MODE AND MULTIMODE FIBER SUPPORT

Fiber Measurement Kit

Fiber is quickly becoming the medium of choice to carry high bandwidth, wide band signals to carry voice, images, video, data and other forms of information. The Multimode fiber is used for short distances at standard wavelengths of 850nm or 1300nm generated by a LED source. The Single-mode fiber is used for long hauls with standard wavelengths of 1310nm and 1550nm generated by a laser light source.

You can test the critical fiber optic cable runs easier and faster with the FiberKit+ connected to your LT 8600.

- Test Multimode and Single-mode fiber optic cable systems for power loss
- Automatically test multiple wavelengths without changing connectors or switching settings
- LED and laser light sources generate 850nm and 1300nm wavelengths on Multimode cable; 1310nm and 1550nm wavelengths on Single-mode cable



- Label and organize test results by direction, drop, project and job
- Display & store test results
- Download results and create reports using LT Record Manager PC software
- Supports multiple fiber optic connector configurations

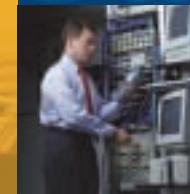
More Value From The Leader

The FiberKit+ addresses many of the requirements that have emerged since WWG pioneered the concept of an integrated fiber optic test kit. Installation requirements have created the need to easily test multiple wavelengths on Multimode and Single-mode cable.

Easy To Test Different Types Of Cable

Test Single-mode cable the same way you test Multimode cable. One power meter tests both.

Cat 6 leader



Wavetek Wandel Goltermann is a world leader in providing communications testing equipment for telecom networks, enterprise networks, multimedia and wireless networks. You can expect superior quality assurance and customer service from Wavetek Wandel Goltermann's family of LAN cable testers.

COMPREHENSIVE TESTING CAPABILITIES FOR TODAY AND TOMORROW

