

IDEAL SM Tracetek Fiber Adapter Specs

Provided by www.AAATesters.com



TRACETEK™ Advanced Fiber Test Option

- Provides an easy to use troubleshooting capability for fiber optic cables
- Illustrates distance-to-fault by providing magnitude and distance of reflective events
- Presents graphical information of fiber under test—similar to an expensive OTDR
- Measures total fiber length without remote handset or second operator
- Supports test result storage and report generation using LANTEK® Reporter Software
- Requires only one LAN cable certifier for copper and fiber testing and troubleshooting

With TRACETEK™, the LANTEK® series of cable certifiers can now troubleshoot fiber optic installations.

Troubleshooting fiber has traditionally been done with an OTDR, but now TRACETEK offers a much simpler and cost-effective solution. TRACETEK can graphically display the fiber under test allowing pin-point location of events and faults on multimode and singlemode cables without the high costs normally associated with buying or renting an OTDR. Time on the job is further reduced with simple one-button operation.

TRACETEK works by injecting pulsed laser light into one end of the fiber and measuring the amount of light that is reflected back from events along the fiber cable. These reflections are then processed and plotted on the LANTEK 1/4 VGA color display.

Events, like connectors, show up as spikes on the display. A bad splice will result in more light being reflected back, thus generating a bigger spike. The amplitude of the spike gives an indication of optical return loss, thus identifying the trouble spot. While using TRACETEK, a cursor can scroll along the trace to provide a reading of distance to the event.

TRACETEK can graphically display and store fiber traces. LANTEK Reporter Software provides file management, report generation, and printing of all test results. TRACETEK is the only fiber accessory for a LAN cable certifier that will trace a fiber run, provide distance-to-fault along the fiber and display the relative magnitude of the event.

When used together, TRACETEK and FIBERTEK Adapters provide LANTEK series of cable certifiers a unique combination of fiber measurement, documentation and troubleshooting capabilities. It is a cost effective fiber certification solution to meet the requirements of the proposed TIA TSB-140.



TRACETEK™

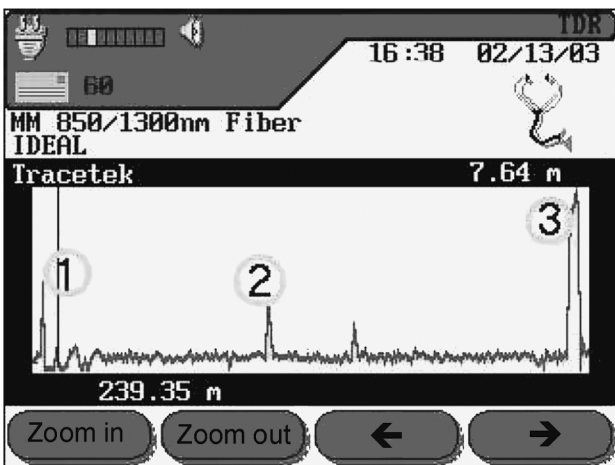
TRACETEK is available in the Premium packages of FIBERTEK™ or as a stand-alone option for any LANTEK 6, 6A or 7G.



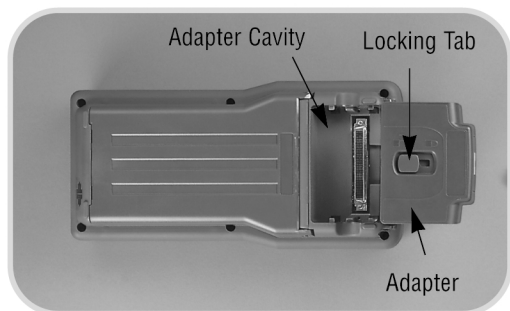
TRACETEK™ Advanced Fiber Test Option

Specifications	TRACETEK™
Detector	
Center Wavelength:	1300 nm, 1310 nm
Minimum Reflection for Event Detection:	-40 dB
Detector Type:	INGaAs
Distances	
High Resolution:	800 meters
Medium Resolution:	850 meters
Low Resolution:	4000 meters
Distance Accuracy:	(+/-3%) + 1 meter
Event Spatial Resolution:	2 meters - High Resolution 8 meters - Medium and Low Resolution
Display Resolution:	0.01 meter
Transmitters	
MM Power Output:	50mW, (+16.5 dBm)
MM Source Type:	1300 nm Fabry-Perot Laser
SM Power Output:	50mW, (+16.5 dBm)
SM Source Type:	1310 nm Fabry-Perot Laser

Distances to Events.



The screen image above traces the back-reflection of three connectorpair events; the magnitude of each event and the end of fiber of a good installation. The cursor can help identify the distance-to-fault. Event 1 is the starting pulse (first connector). Event 2 is a reflective event from a connector. Adjacent to event 2, there is another connector reflective event. Abnormal large spikes in unexpected locations are indicative of potential trouble spots. Event 3 is the end of fiber.



The LANTEK tester's innovative design securely holds all test adapters, including TRACETEK, with no protruding connectors.

Configuration Information

TRACETEKMM
1300 Adapter with FC connector, MM simplex fiber cable (3m) with FC/ST connectors, MM duplex sleeve with ST to ST coupler, manual, and LANTEK Reporter software
TRACETEKSM
1310 Adapter with FC connector, SM simplex fiber cable (3m) with FC connectors, SM simplex sleeve with FC to FC coupler, manual, and LANTEK Reporter software
FIBERTEKMM
FIBERTEKMM basic package and TRACETEKMM
FIBERTEKSM
FIBERTEKSM basic package and TRACETEKSM
FIBERTEKALLP
All TRACETEK accessories and FIBERTEK accessories for multi-mode and singlemode in hard carrying case
FIBERTEKM2P
FIBERTEK 850MM Adapter with ST connector (qty 2), TRACETEKMM 1300 adapter with FC connector, MM duplex fiber cable (3m) with ST connectors (qty 2), MM simplex fiber cable (3m) with FC/ST connectors, MM duplex sleeve with ST to ST coupler (qty 3), MM simplex sleeve with FC to ST coupler, SM simplex sleeve with FC to FC coupler, manual, and LANTEK Reporter software

IDEAL INDUSTRIES, INC.

Becker Place, Sycamore, IL 60178,
USA / 815-895-5181 • 800-435-0705 in USA

International offices:

Australia • Brazil • Canada • China
France • Germany • UK

For complete sales office contact information, visit us at:

www.idealindustries.co.uk

Technical specifications are subject to change w/o prior notice.

Form No. P-2220
© 2008 IDEAL INDUSTRIES, INC.

05/08
Printed in Germany