

## Product Brief

# VI

# AVI T-BERD/MTS-5800

## All-in-one handheld network and fiber testing

The T-BERD®/MTS-5800 handheld network tester is the one tool that network technicians and engineers need to install, turn-up, and maintain their networks. It supports both the legacy and emerging technologies required to handle various network applications including metro/core, mobile backhaul, and business services installations.

The industry's smallest handheld instrument can test throughout the service life cycle, including fiber characterization, service activation, troubleshooting, and maintenance. Advanced Ethernet test features such as TrueSpeed per RFC 6349, J-Profiler™, Wirespeed capture/decode, and automated J-Mentor, help field technicians test their networks faster and more accurately than ever before.



- Simplifies multitechnology testing with an all-in-one dual-10 G handheld
- Optimized for field use with a multitouch screen, scripted workflows, and clear results
- Supports efficient best practices with repeatable methods and procedures with Job Manager guided workflows
- Speeds fiber characterization, Ethernet service activation, and troubleshooting

### Key Features

- Fully-loaded TDM/PDH to dual 10 G Ethernet, SONET, SDH, Fiber Channel, CPRI/OBSAI, eCPRI, and OTN support
- Automated, enhanced RFC 2544 and SAMComplete testing per ITU-T Y.1564
- Integrated burst testing approach per MEF 34 and RFC 6349 TrueSpeed™ TCP throughput testing
- Timing/Synchronization testing with PTP, SyncE, and 1 PPS, 2 MHz and 10 MHz Wander
- Compatible with VI

### Applications

- Mobile and backhaul characterization, validation, and troubleshooting
- Converged Ethernet/IP network testing and troubleshooting at 10 Mbps to 10 G interfaces
- Fiber link characterization and troubleshooting
- Installation and maintenance of OTN and legacy SONET/SDH and TDM/PDH networks
- Remote radio head (RRH) testing at the wireless basestation, including CPRI 1–9 rates
- PIM and interference testing over optical links (RFoCPRI)
- Next generation Fronthaul eCPRI support

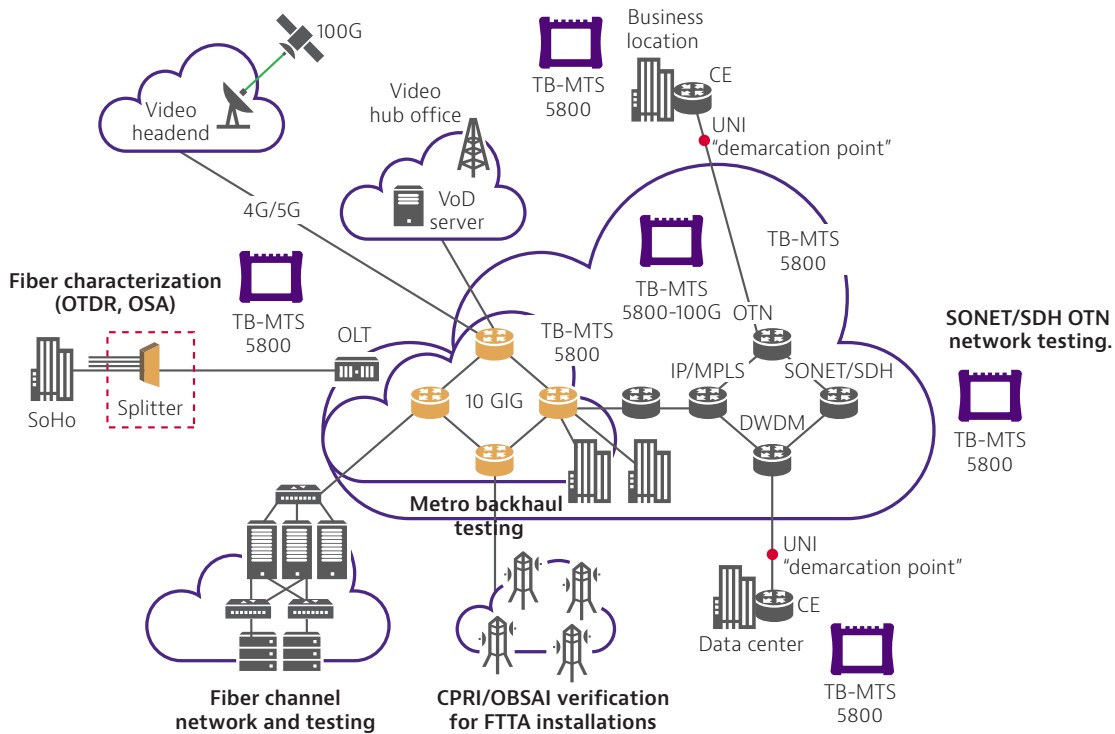


Figure 1. T-BERD/MTS-5800 in the carrier Ethernet network

## All-in-One Handheld Tool

The configurable T-BERD/MTS-5800 is the industry's smallest dual 10 G handheld instrument for Ethernet, SONET, SDH, OTN, Fiber Channel, and CPRI/OBSAI testing:

- All test interfaces are readily available
- Compact form factor for easy portability:  
7 x 9.5 x 3 in (17.8 x 24.1 x 7.62 cm)
- Large 7 in multi-touch display
- Tablet-like interface for easy navigation through test information and advanced workflows
- Integrated WiFi and Bluetooth lets you easily connect test sets and offload results



## Compatible with VIAVI Solutions Fiber Test Tools

Mobility, business services, and metro technicians can now test virtually any interface in their network as well as qualify fiber plant with one ultra-portable instrument. The T-BERD/MTS-5800 is compatible with:

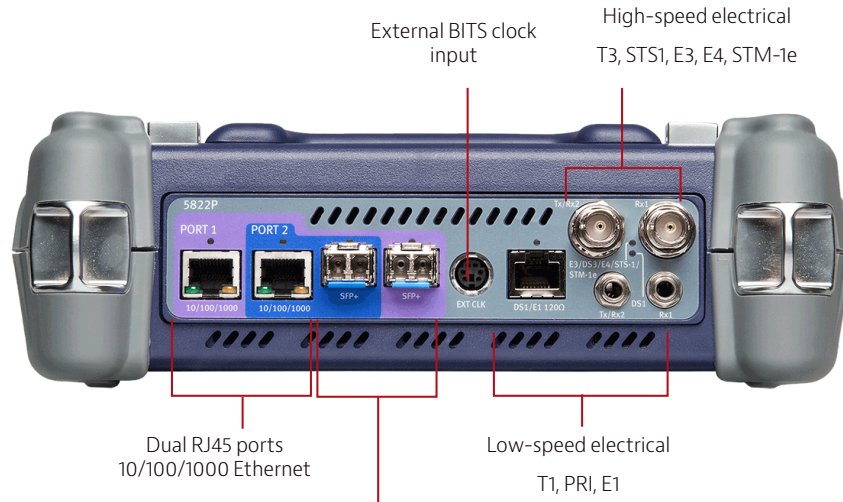
- The P5000i fiber microscope for connector end-face inspection and analysis
- MP-Series optical power meters for optical power and loss measurements
- OTDR modules for fiber link characterization and fault finding
- Smart Link Mapper optical analysis software that displays OTDR results in a simple, icon-based map view for clear diagnostics of detected issues

## Optimized for Easy Field Use

- Fixed test interfaces eliminate loose pluggable modules
- LEDs indicate plug-ins for tests
- A streamlined user interface provides simple pass/fail, green/red results
- Extended battery life enables longer test times
- Boots up rapidly from power-on to test start
- Dual-port operation runs two tests simultaneously, including 10 G/high-speed tests



### Test every interface in your network!



Dual SFP+ ports; 1 and 10 G Ethernet LAN/WAN; 10GE eCPRI  
 STM-1-64, OC3-192; OTN OTU 1, 2 OTU1e, 2e  
 Fiber Channel: 1/2/4/8/10/16 G FC  
 CPRI/OBSAI 614 Mbps – 12.2 Gbps

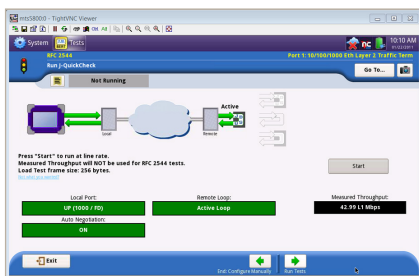
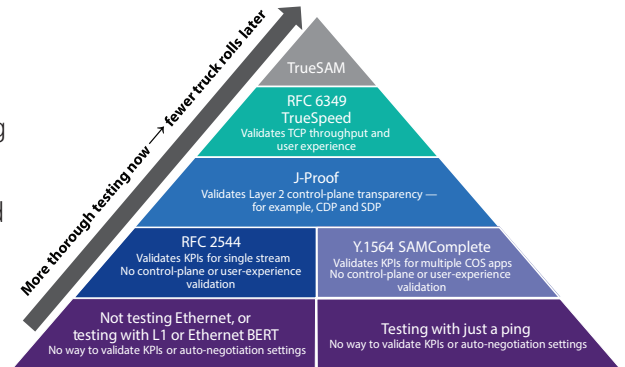


Compatible with VIAVI FiberScope

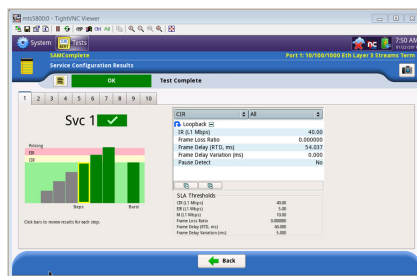
## TrueSAM Saves Valuable Service Activation Time

Test better and quicker with automated tests combined into one ultimate installation tool:

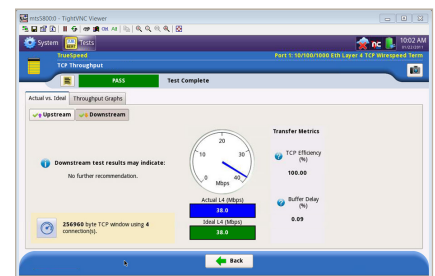
- J-QuickCheck — a fast, automated test (RFC 2544, Y.1564) for validating end-to-end and auto-negotiation configuration
- Enhanced RFC 2544 — an automated turn-up test for validating key performance indicators (KPIs)/concurrently measuring SLAs such as throughput, frame delay, delay variation, frame loss, and committed burst size (CBS) — optional
- Y.1564 SAMComplete — an automated service verification test that speeds the installation of multiple classes of services (COS)
- TrueSpeed per RFC 6349 — an automated, standards-based test that can save up to 25% of operating expenses (OpEx) and reveals the reason for slow file downloads, eliminating finger-pointing
- Interoperable with TrueSpeed VNF and QT-600 to speed testing



Enhanced RFC 2544 with J-QuickCheck



SAMComplete per ITU-T Y.1564

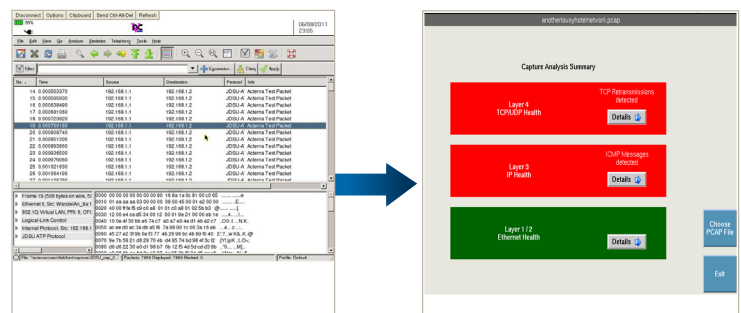


TrueSpeed per RFC 6349

## Reduce Mean Time to Repair for Network Problems

Reduce CapEx/OpEx while immediately identifying problems with automated tests — without the need for a field expert or a separate analyzer.

- Network discovery automatically identifies equipment present on the network
- J-Profiler discovers live traffic streams for real-time troubleshooting with in-service top-talkers analysis
- Integrated capture/decode offers 10 G line-rate packet capture and analysis in a handheld
- J-Mentor provides expert troubleshooting guidance and interprets packet decodes



J-Mentor provides expert troubleshooting guidance

## Enables Network Evolution — Today and Tomorrow

The 5800 meets leading-edge, carrier-grade Ethernet requirements:

- Ensures reliability with link and service OAM (IEEE 802.3ah, 802.1ag, and ITU-T Y.1731)
- Validates network scalability with VLAN, Q-in-Q, MAC-in-MAC Ethernet-over-Ethernet, MPLS, and VPLS tunnelling technologies.
- Support for ODU multiplexing including ODU1, ODU0, and ODUFlex
- Test emerging 5G technology with eCPRI specific testing including One-Way-Delay (OWD)
- Full-featured VoIP and IP video turn-up and troubleshooting tests
- Supports packet transport network (PTN) evolution with MPLS-TP technology
- Ethernet Service Disruption with multi-tier triggers
- Run Bi-Directional Forwarding Detection (BFD) against switch and router partners while generating traffic to measure KPIs

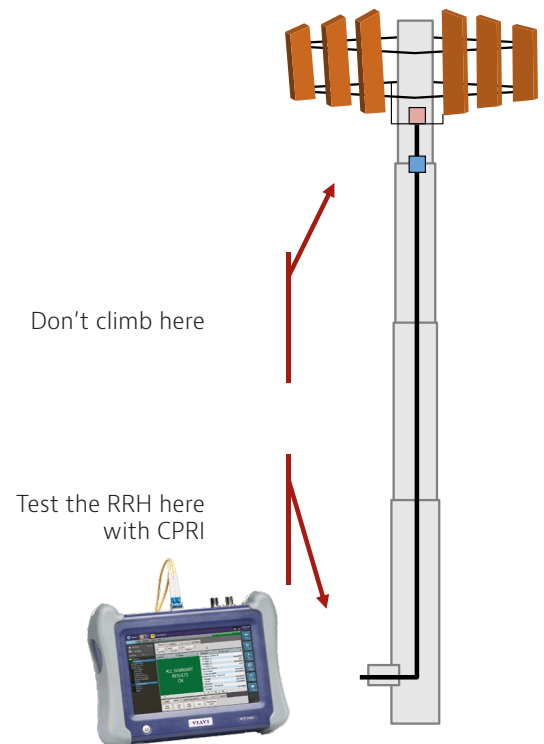
## Empower Cell-Site Technicians – Fiber testing to CPRI and eCPRI

T-BERD/MTS-5800 tools let cell-site technicians efficiently install and maintain backhaul and fronthaul networks. They can ensure BBU and RRH connectivity with CPRI and OBSAI tests:

- Validate C-RAN connectivity across CWDM networks
- Test RRH health from the bottom of the tower or from a C-RAN location by emulating a BBU
- Identify PIM and interference issues from an optical test access point including quad spectrum with enhanced markers.(RFoCPRI)
- Support 2-Tone PIM generation enabling PIM detection without climbing a tower
- Bit Error Rate Test eCPRI fronthaul circuits
- Validate RJ-45 Ethernet wiring is properly crimped down and wire mapped including end-to-end shield ground connectivity
- CPRI Check automates setting Antenna Tilt, detecting PIM and reading VSWR

And, they can verify network synchronization:

- Emulate a 1588v2 master clock/slave recovery for proper point-to-point (PTP) message propagation and packet-delay variation (PDV) verification
- Verify SyncE frequency synchronization accuracy and Ethernet synchronization message channel (ESMC) message propagation



- Measure wander on SyncE, 1PPS, T1, E1, and 2 and 10 MHz signals
- Track satellite movements to optimize GPS antenna placement
- Test Floor Packet Percentile per ITU PTP Frequency recommendations

When equipped with an OTDR module, the T-BERD/MTS-5800 is the perfect solution for mobile network testing, providing easy fiber link characterization and troubleshooting.

Activate services more quickly and accurately

Reduce mean time to repair (MTTR) on network problems

Test the widest range of traditional and emerging telecom interfaces



Common Application Base  
Same user interface + same results + same methods and procedures

## Part of the Leading T-BERD/MTS Test Portfolio

### StrataSync

#### Empower Your Assets

StrataSync is a hosted, cloud-enabled solution for managing assets, configurations, and test data on VIAVI instruments. It ensures that all instrument software is current and the latest options are installed. StrataSync lets you manage inventory, test results, and performance data anywhere with browser-based ease while it also improves technician and instrument efficiency. StrataSync manages and tracks test instruments, collects and analyzes results from the entire network, and it informs and trains the workforce.



Contact Us **+1 844 GO VIAVI**  
(+1 844 468 4284)

To reach the VIAVI office nearest you,  
visit [viavisolutions.com/contact](http://viavisolutions.com/contact).

© 2018 VIAVI Solutions Inc.  
Product specifications and descriptions in this document are subject to change without notice.  
5800-pb-tfs-tm-ae  
30168388 909 1218