

JDSU Validator NT955 Specs

Provided by www.AAATesters.com

Validator™ and Validator-NT™ Ethernet Network Management Tools



Key Features

- Conducts Bit Error Rate (BER) testing to speed certify Ethernet data transmission speed up to 1000BASE-T (1 Gb/s)
- Measures Signal-to-Noise Ratio and Skew to uncover impairments to Ethernet data transmission
- Tests for opens, shorts, split pairs, miswires, and reversals and measures distance to opens and shorts—supports all network, telco, and coax cables
- Identifies cable termination on active Ethernet ports with hub flash
- Performs port discovery to detect advertised Ethernet speed and displays capabilities of network devices (Validator-NT)
- Pings network devices to verify connectivity to active equipment (Validator-NT)
- Includes Plan-Um® software to create network layout, document cable tests, show network topology, and record moves, adds, and changes



The Validator™ series of Ethernet Network Management Tools—Validator and Validator-NT™—offer a complete solution to test and speed certify the data-carrying capabilities of Ethernet network cables up to 1 Gb/s by testing for noise in the network, detecting faults in the cabling wiring, and ensuring that cables are able to support the speed capabilities of active equipment.

Applications

- Verify proper operation of Ethernet cable runs
- Certify speed capability of cable runs to support 10/100/1000 Mb/s Ethernet applications
- Ensure configuration of and connectivity with active network devices
- Document network topology including moves, adds, and changes

To certify Ethernet speed performance of cable runs, the Validator series handheld testers conduct Bit Error Rate (BER) tests by sending data packets down specified cable runs at defined data rates to check for errors at the maximum throughput of the link. Both Validator and Validator-NT also report on signal quality that can impact high-speed data transmission by measuring signal-to-noise ratio (SNR). Skew measurements report on the signal time delay between pairs that can impact Ethernet data transmission. Finally, the Validator series units provide continuity testing that detects opens, shorts, miswires, split pairs, reversals, and high-resistance faults while accurately measuring distance to faults and total cable length.

The Validator-NT includes a comprehensive set of features to test the active network capabilities of a network: port discovery for speed and capability detection of active devices up to 1 Gb/s; ping test to verify connectivity to IP hosts on or off the local network; and discovery of network devices using Cisco Delivery Protocol (CDP).





Plan-Um® software

Cabling Installation and Planning Software

Validator and Validator-NT include the powerful Plan-Um® planning and reporting software for planning network architectures and organizing cable information and test results. Plan-Um helps set-up each job, defines scope of the job, aids in testing cable runs, and produces reports for the installer and customer. The Network Tools feature provides a quick way to see the network architecture and a way to document moves, adds, and changes.

Used in conjunction with Plan-Um, Validator and Validator-NT provide confidence in the physical properties of cable runs and the overall capability of the network.

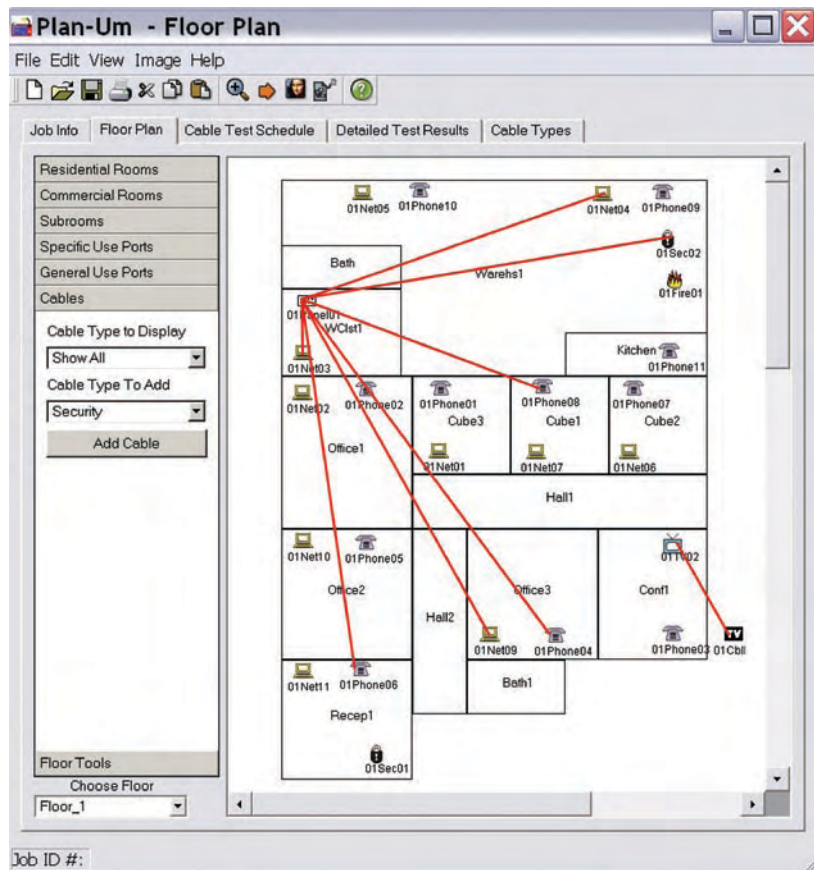
Define the job, conduct speed and continuity tests, and document results.

1) Layout

- Create custom floor plans or import existing AutoCAD or Visio files
- Show specific ports: network, telephone, cable
- Indicate cable runs
- Print or e-mail layout for approval
- Save layouts for future jobs
- Automatically create cable test schedule
- Cable list shows run start and end points
- Each cable run is displayed for cross-checking

ID	Location	Cable Type	Length	Status
1	Office1	01Phone01	22.33	Pass
2	Office1	01Phone02	22.33	Pass
3	Office1	01Phone03	22.33	Pass
4	Office1	01Phone04	22.33	Pass
5	Office1	01Phone05	22.33	Pass
6	Office1	01Phone06	22.33	Pass
7	Office1	01Phone07	22.33	Pass
8	Office1	01Phone08	22.33	Pass
9	Office1	01Phone09	22.33	Pass
10	Office1	01Phone10	22.33	Pass
11	Office1	01Phone11	22.33	Pass
12	Office1	01Phone12	22.33	Pass
13	Office1	01Phone13	22.33	Pass
14	Office1	01Phone14	22.33	Pass
15	Office1	01Phone15	22.33	Pass
16	Office1	01Phone16	22.33	Pass
17	Office1	01Phone17	22.33	Pass
18	Office1	01Phone18	22.33	Pass
19	Office1	01Phone19	22.33	Pass
20	Office1	01Phone20	22.33	Pass
21	Office1	01Phone21	22.33	Pass
22	Office1	01Phone22	22.33	Pass
23	Office1	01Phone23	22.33	Pass
24	Office1	01Phone24	22.33	Pass
25	Office1	01Phone25	22.33	Pass
26	Office1	01Phone26	22.33	Pass
27	Office1	01Phone27	22.33	Pass
28	Office1	01Phone28	22.33	Pass
29	Office1	01Phone29	22.33	Pass
30	Office1	01Phone30	22.33	Pass

Cable list screen



Job ID #:

2) Speed Certification and Continuity Test

- Certifies Ethernet transmission speed up to 1 Gb/s using full Bit Error Rate (BER) test by sending data packets across cable runs
- Conducts measurements to detect noise and delay that affect data transmission: Skew and overall SNR

ID	Type	To	From	Result
Cable001	CAT3	01Net01	01Panel01	PASS
Cable002	CAT5	01Net02	01Panel01	100
Cable003	CAT5E	01Net03	01Panel01	1000
Cable004	RG-6	01TV01	01Panel01	PASS
Cable005	CAT5E	01Net04	01Panel01	1000
Cable006	CAT5E	01Net05	01Panel01	FAIL
Cable007	CAT6	01Net06	01Panel01	1000

Wiremaps individual runs to locate and identify cable routes

Tests telephone, network, coax, and security/alarm cables for continuity, proper termination, and polarity

Expected	Results
1	1
2	2
3	3
6	6
4	4
5	5
7	7
8	8

Testing underway

Skew and SNR results shown on faulty cables

Length	Skew	SNR
Max: 300ft	Max: 35ns	Min: 20db
A: 182ft	0.0	25.5
B: 188ft	6.0	25.6
C: 183ft	2.0	25.8
D: 188ft	2.0	26.0

BERT Results: 0 errors

Measures cable length and distances to opens and shorts using advanced TDR technology

Shows the actual error rate in the BER test

Test Results: PASS

Displays test results

VALIDATOR™ Cable Test Schedule

Date: 12 10 04 Time: 1:30 pm

Site Information:
 Job ID: 04112
 Residential
 John Homewood
 3300 774 6888
 jrh@wethoo.org
 4700 Genetic Street
 Springfield
 MS
 38763
 USA

Contractor Information:
 Test-Um Inc.
 Heath, Kong
 (805) 383-1500
 info@test-um.com
 808 Calle Plano
 Camarillo
 CA
 93012
 USA

Certified by: _____ (INSTALLER SIGNATURE) _____ (INSTALLER COMPANY)

CABLE ID	TO	FROM	TYPE	CBL_CAT	USE	LENGTH	RESULT	
Cable001	01Panel04	01Panel01	CAT3		Phone	339 ft	PASS	
Cable002	01Panel02	01Panel04	CAT3		Phone	339 ft	PASS	
Cable003	01Panel05	01Panel01	RG-6		2Wire	4 ft	PASS	
Cable004	01TV01	01Panel06	RG-6		2Wire	2 ft	PASS	
Cable005	01Comm01	01Spkr04	Audio		2Wire	Speaker	2 ft	PASS
Cable006	01Comm01	01Spkr02	Audio		2Wire	Speaker	10 ft	FAIL
Cable007	01Comm01	01Spkr01	Audio		2Wire	Speaker	12 ft	PASS
Cable008	01Comm01	01Spkr03	Audio		2Wire	Speaker	13 ft	FAIL
Cable009	01Panel01	01Panel01	Fire		2Wire	Fire	6 ft	PASS
Cable010	01Panel03	01Panel01	Fire		2Wire	Fire	1 ft	PASS
Cable011	01Panel01	01Panel01	CAT3		Phone	340 ft	PASS	
Cable012	01Phone01	01Panel01	CAT3		Phone	340 ft	PASS	
Cable013	01Panel01	01Panel01	CAT6		Data	31 ft	1000MB	
Cable014	01Net01	01Panel01	CAT6		Data	31 ft	1000MB	
Cable015	01Panel02	01Panel01	CAT5E		Data	15 ft	1000MB	
Cable016	01Panel02	01Panel01	RG-6		2Wire	4 ft	PASS	
Cable017	01Panel02	01Panel01	CAT3		Phone	335 ft	PASS	
Cable018	01Panel03	01Panel01	CAT3		Phone	336 ft	PASS	
Cable019	01Panel03	01Panel01	RG-6		2Wire	4 ft	PASS	
Cable020	01Panel02	01Panel01	Fire		2Wire	6 ft	FAIL	
Cable021	01Sat01	01Panel01	RG-59		2Wire	Satellite	4 ft	PASS

3) Document and Archive

- Verifies all tests are done against the plan
- Shows PASS/FAIL, cable length, and speed rating
- Provides end-of-job report for billing purposes
- Stores finished jobs for reference to support moves, adds, and changes
- Has the option to store data on a PC or the included removable flash memory card

Specifications
General

Display	Color back-lit liquid crystal display (LCD)
Operating System	Linux
Keypad	Full navigations set with alphanumeric data entry and soft-key functions

Interfaces

- USB device port
- Compact flash card (included)

Test Connectors

- 8-position shielded modular jack (data)
- 6-position modular jack (telephone)
- F-coax (video) and dual banana jack (security, speaker, etc.)

Cable Types

- Shielded or unshielded twisted pair
- Telephone, coax, speaker wire, security, fire, and alarm

Cable Length

Maximum cable length for testing for split pairs is up to 457.2 m (1,500 ft), depending upon cable type

Electrical

Power source	AC adapter/lithium ion rechargeable, removeable batteries
--------------	---

Environmental

Operating temperature	0 to 50°C (32 to 122°F)
Storage temperature	–20 to 70°C (–4 to 158°F)
Humidity	10 to 85%, non-condensing

Physical
Main Unit

Size	22.9 x 11.4 x 5.3 cm (9 x 4.5 x 1.8 in)
Weight	710 gms (1 lb 9 oz) with battery

Remote

Size	14.2 x 11.2 x 4.4 cm (5.6 x 4.4 x 1.8 in)
Weight	341 gms (12 oz) with battery

Ordering Information
Validator Ethernet Speed Certifier Kit

(Choose the model with the appropriate AC adapter cables)

North America	NT950
Australia	NT950-AUS
Europe	NT950-EURO
Italy	NT950-ITAL
United Kingdom	NT950-UK
Without AC adapter cables	NT950-WOAC

Validator-NT Ethernet Speed Certifier and Active Network Tester Kit

Performs all Validator functions, includes set of 8 cable test remotes, and adds the following active network test features: discovers advertised speed and capabilities of active network devices to 1 Gb/s and pings network devices to verify connectivity to active equipment.

(Choose the model with the appropriate AC adapter cables)

North America	NT955
Australia	NT955-AUS
Europe	NT955-EURO
Italy	NT955-ITAL
United Kingdom	NT955-UK
Without AC adapter cables	NT955-WOAC

- **Validator and Validator-NT** each includes smart remote, two lithium ion rechargeable batteries (NT93), two AC adapter/charger units, 1.83 m (72 in) USB cable assembly (NT94), compact flash card, two 19 cm (7.5 in) RJ12 to RJ12 cables for no-fault connection to RJ11 or RJ45 jacks (TP20), two F-connector plug to BNC jack adapters (TP62), two 30.48 cm (1 ft) patch cables with RJ45 connectors (TP55), two 60.96 cm (2 ft) RJ45 to 8 alligator clips cord sets (TP68), two sacrificial cables for RJ45 mod plug (TP74), Plan-Um cabling installation and planning software (NT940), and deluxe carrying case.

Accessories

Lithium ion rechargeable battery	NT93
1.83 m (72 in) USB cable assembly	NT94
Cable speed certified labels, roll of 100	NT95
Smart remote for Validator	NT925
Smart remote for Validator-NT	NT928
19 cm (7.5 in) RJ12 to RJ12 cable for no-fault connection to RJ11 or RJ45 jacks	TP20
30.48 cm (1 ft) patch cable with RJ45 connectors	TP55
F-connector plug to BNC jack adapter	TP62
60.96 cm (2 ft) RJ45 to 8 alligator clips cord set	TP68
Sacrificial cable for RJ45 mod plug	TP74
Plan-Um cabling installation and planning software	NT940



Validator-NT and smart remote



Validator and smart remote



Validator Ethernet Speed Certifier Kit (NT950)

Test & Measurement Regional Sales

NORTH AMERICA TEL: 1 866 228 3762 FAX: +1 301 353 9216	LATIN AMERICA TEL: +55 11 5503 3800 FAX: +55 11 5505 1598	ASIA PACIFIC TEL: +852 2892 0990 FAX: +852 2892 0770	EMEA TEL: +49 7121 86 2222 FAX: +49 7121 86 1222	www.jdsu.com/know
---	--	---	---	--