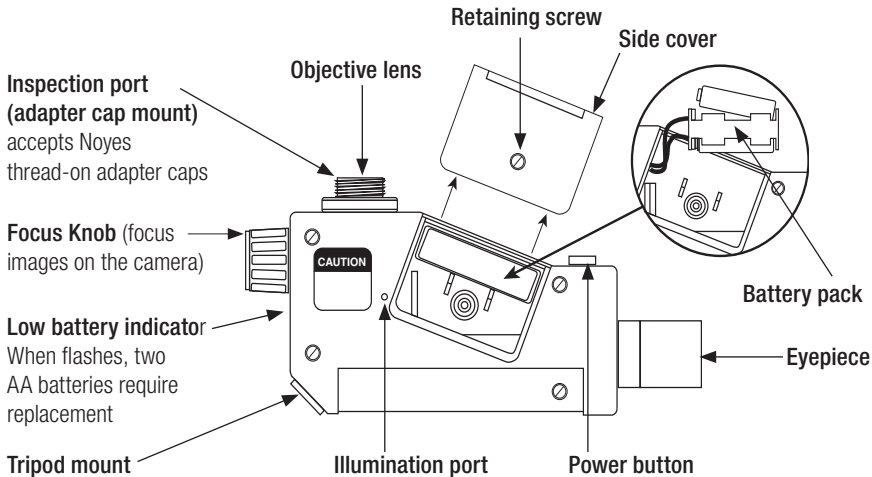


**OFS 300 Optical Fiber Scope**



## Inspecting Connectors

1 Use the 2.5 mm Universal adapter (ships with scope) for viewing SC, FC, ST, etc. connectors. Contact Noyes for adapters designed for angled ferrules and other connector types.

2 Mount the selected adapter cap on the Inspection Port.

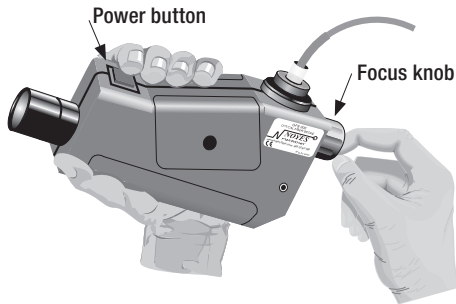
3 Use an Optical Power Meter to verify the fiber optic connector to be inspected is not “live”.

**Note:** The OFS 300 includes a KG3, > 40 dB IR Safety Filter.

4 Connect the cable to be inspected to the adapter cap.

**Optional:** If the opposite end of the cable is accessible, it may be placed into the Illumination Port to illuminate the fiber core for viewing.

5 Press the ON button with one hand while adjusting the Focus Knob with the other hand.

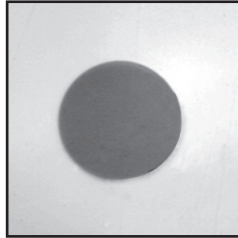


## Replacing Battery

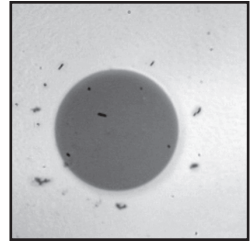
- Remove the retaining screw and side cover.
- Pull out the battery pack and remove the discharged batteries.
- Replace batteries with two new AA alkaline.
- Replace the battery pack, side cover, and retaining screw.

## Viewing Fiber Ends

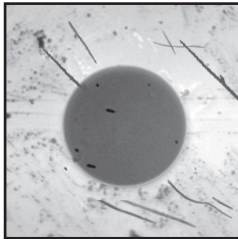
After focusing is complete, the magnified view will reveal the condition of the core and cladding. Below are the various examples of fiber ends ranging from excellent to very poor conditions.



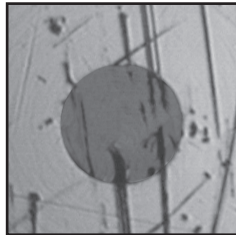
Excellent condition



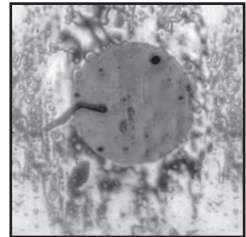
Uncleaned, lint or dust



Scratches and dirt



Severely scratched face



Cleaning residue, water or alcohol

## Cleaning the Lenses

Use lint-free optical cleaning wipes such as AFL FiberWipes and optical quality cleaning fluid such as AFL FCC2 connector cleaning fluid.

**Note:** if using isopropyl alcohol (IPA), be sure to use 99% pure IPA that has not been contaminated.

- Dampen a portion of the wipe with the cleaning fluid.
- Gently wipe lens starting with the wet section of the wipe and pulling it to the dry section.

**Note:** Vigorous rubbing or the use of a semi-abrasive cloth may impair the efficiency of the instrument.

**Note:** The eyepiece is not to be unscrewed and taken apart. The only maintenance to be done is to the outer lens.

## Safety

**WARNING!** To avoid serious eye injury, never look directly into optical outputs of fiber optic network equipment, test equipment, patch cords, or test jumpers. Always assume that optical outputs are on.

**CAUTION!** The OFS 300 Inspection Scope contains no user serviceable parts. Except for changing batteries, this instrument must be returned to Noyes for repair.

## Warranty

All Noyes products are warranted against defective material and workmanship for a period of one year from the date of shipment to the original customer.



A Division of AFL Telecommunications

[www.AFLtele.com](http://www.AFLtele.com) or 1.800.321.5298 / 1.603.528.7780

OFS1-00-1000 Revision T, 09.30.08