

► Y400 Platform



► Features & Benefits

Modules Allow for Easy Future Expansion for New Functions

Familiar Windows CE Interface with Touch Screen Design

Develop and Run Customized Procedures for Consistent Repeatable Testing

User-changeable Battery Packs with Optional External Charger for Uninterrupted Use

Rugged, Light Weight, Easy to Use Anywhere

► Applications

Base Station Transmitter Analysis

Resolve Interference Problems

Troubleshooting of T1 Circuits

Base Station Antenna and Transmission Line Analysis

Productivity Enhancement Software

## Portable, Ready for the Field

### Handheld Platform

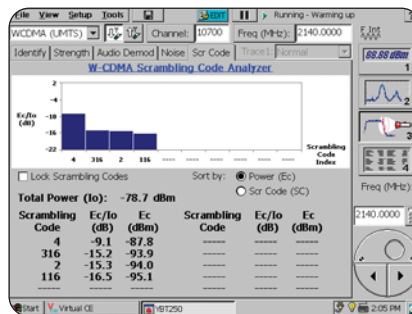
The Tektronix NetTek® analyzer is a revolutionary portable field tool. When combined with various test modules, the NetTek offers proven measurement capability at a surprisingly low price, in a rugged, easy-to-use package, suitable for all field environments.



### Easy to Use

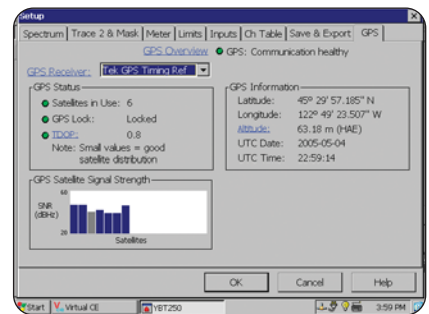
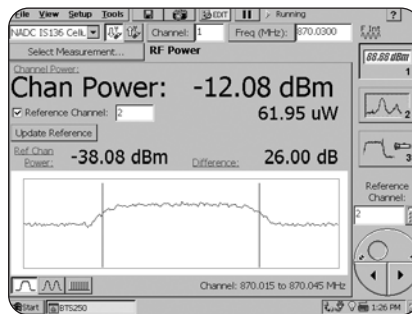
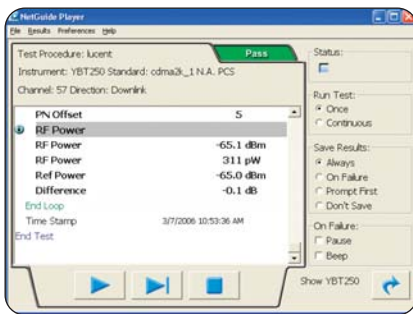
The NetTek analyzer is based around the familiar Windows CE operating system. As a result, users will spend less time learning the instrument and more time troubleshooting the network. Furthermore, built-in help guides speed the measurement process.

Common measurements have been optimized for quick, repeatable results. For example, novice users can display results with straightforward Windows-like zoom and resize controls.



# NetTek® Analyzer

## ► Y400 Platform



### Enhanced Productivity

Used in conjunction with the NetTek® Analyzer, the NetGuide software solution enables creation of customized procedures that allow for consistent testing among technicians. Be assured of proper measurement configuration by defining step-by-step instructions for the user. Guarantee that all tests are executed to company standards. Share expert knowledge among your technicians to minimize network down time.

### Touch Screen

The Windows CE interface is combined with a rugged touch screen. User controls and buttons only appear on the screen when they are needed, making measurements simpler to perform. The screen is operated by pressure, meaning that even a gloved finger can reliably operate the instrument in cold weather.

### Field Rugged

The NetTek analyzer is designed to withstand day to day abuse wherever testing is required. The NetTek analyzer and each module feature a magnesium alloy shell, bonded with a rubber skin for maximum impact resistance and rigidity. All ports feature a sealed rubber cover. The unit may be operated and stored over a wide temperature range.

The NetTek analyzer design needs no fan or ventilation ports, maximizing resistance to dirt and dust.

### PC Connectivity

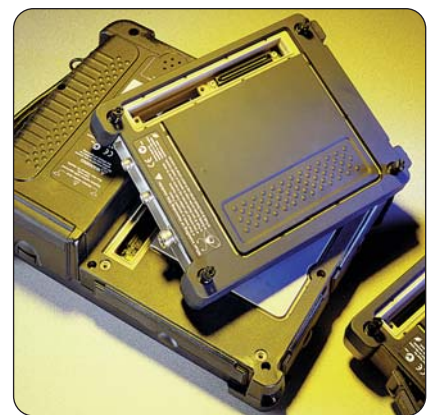
The NetTek analyzer is designed to easily work with the PCs required for maintaining today's networks. The instrument includes as standard two PC card slots, Ethernet port, RS-232 port and USB slots. A USB floppy disk drive or PCMCIA memory card can be added as an option. The NetTek can also be controlled remotely using the optional Virtual CE interface. The platform includes support for vxHpc terminal emulator software. Further, all of these devices are Windows CE compatible – meaning data and test results can be shared quickly with a PC operating Windows.

### Optional GPS Receiver

In addition to location and time information, this optional GPS receiver provides an independent external frequency reference for checking BTS frequency accuracy. With its 5 V output and satellite signal strength graph, this option can be used as a go/no-go tester for most external GPS antennas.

### The Modules and the Platform

The Tektronix NetTek platform includes the display, power supply, CPU and



► NetTek platform combined with test modules.

battery compartments. Measurement modules can then be attached to the back. Up to four modules can be attached at once. A variety of modules and options allows you to tailor the instrument to service the standards and interfaces in use in your network.

The modular design also means that the instrument can easily be upgraded. New measurements or standards can be added with software upgrades or with additional modules.

The NetTek platform today supports not only the YBT250 test module for spectrum and base station testing, but also the YBA250 module for antenna and transmission line analysis and the YBT1 for T1 testing.

## ► Characteristics

### Y400 NetTek® Platform Characteristics

#### Module Support –

Connect up to 4 test modules.  
Field interchangeable.

Additional mini-test modules supported on PCMCIA.

#### Display –

26 cm (10.4 in.), 640x480 pixel, transmissive color LCD.

Touch screen display optimized for finger use – does not require special scribes or other tools to operate.

#### Power –

AC power: AC: 90 to 264 VAC, 47 to 63 Hz.

DC power: 24 VDC ±1.2 VDC, 72 W maximum.

One Li-Ion battery standard.

Measurement operation time on battery:

>2 hours per battery, >4 hours typical usage.

Actual operation time dependent on type and number of applications running.

Can hold two batteries (second battery optional) for total of >4 hours of continuous measurement; >8 hours typical usage.

DC 12 V car adapter (optional).

Recharge time (non-operating): 4.5 hours.

#### Warranty/Calibration –

1 year warranty, regular platform calibration not required.

#### Interface Ports –

RS-232 serial: 9-Pin, up to 115.2 kb/s serial.

USB: 1.1 compatible Master and Slave Ports.

Keyboard: PS/2 compatible, Mini-DIN connector.

Microphone jack: 3.5 mm jack for external microphone.

Headphone jack: 3.5 mm jack for external headphone.

Built-in speaker.

PCMCIA: 2 PCMCIA type II ports.

Ethernet Port: Compatible 10Mb.

#### File/Test Storage –

Internal memory (standard): 32 MB available for storage and running Windows CE applications.

USB Floppy disk (optional): MS-DOS compatible 3.5"; 1.4 MB.

PCMCIA Memory card (optional): 128 MB.

Port supports standard PCMCIA memory cards.

#### Environmental –

Operating temperature: –10 °C to +50 °C.

Storage temperature: –40 °C to +60 °C.

Humidity, operating: 5% to 95%.

## Physical Characteristics

Dimensions* <sup>1</sup>	mm	in.
Height	249	9.8
Width	330	13.0
Depth	89	3.5
Weight* <sup>1</sup>	kg	lbs.
With one battery	4.1	9.04

## ► Ordering Information

### Y400

NetTek Analyzer platform must be combined with an application module for operation.

**Includes:** Shoulder strap, Tilt Stand, Stylus, AC Power Supply, One Li-Ion battery, Setup Reference, RS-232 Cable and Soft Carry Case. Please specify power connection when ordering.

### Options

**Opt. FD** – USB 3.5" Floppy Disk Drive (incl. cable).

**Opt. MD** – PCMCIA Memory Card (128MB).

**Opt. VCE** – Virtual CE Remote Control.

### Language Options

**Opt. L0** – English Localized Windows CE and English manual.

**Opt. L1** – French Localized Windows CE and English manual.

**Opt. L2** – Italian Localized Windows CE and English manual.

**Opt. L3** – German Localized Windows CE and English manual.

**Opt. L4** – Spanish Localized Windows CE and English manual.

**Opt. L5** – Japan Localized Windows CE and English manual.

**Opt. L6** – Portuguese Localized Windows CE and English manual.

**Opt. L7** – Chinese (Simplified) Localized Windows CE and English manual.

**Opt. L10** – Russian manual.

### Power Connections

**Opt. A0** – North America power.

**Opt. A1** – Universal EURO power.

**Opt. A2** – United Kingdom power.

**Opt. A3** – Australia power.

**Opt. A4** – 240 V, North America power.

**Opt. A5** – Switzerland power.

**Opt. A6** – Japan power.

**Opt. A10** – China power.

**Opt. A99** – No power cord or AC adapter.

## NetGuide

**YNETG** – Productivity enhancement software to develop and run customized test procedures.

## Service

**Opt. R3** – Repair Service 3 years.

**Opt. R5** – Repair Service 5 years.

## Additional Accessories

**Shoulder Strap**<sup>\*2</sup> – Order 367-0518-00.

**Tilt Stand**<sup>\*2</sup> – Order 348-1661-00.

**Stylus**<sup>\*2</sup> – Order 119-6107-00.

**AC Power Supply**<sup>\*2</sup> – Order 119-6984-00.

**One Li-Ion Battery**<sup>\*2</sup> – Order 146-0127-01.

**Setup Reference**<sup>\*2</sup> – Order 071-1430-xx.

**RS-232 Cable**<sup>\*2</sup> – Order 012-1379-00.

**Soft Carry Case**<sup>\*2</sup> – Order 016-1775-00.

**Display Protector Sheets (5)** – Order 016-1882-00.

**Mini Keyboard** – Order 118-9402-00.

**External Charger** – Order 119-6030-00.

**In-vehicle DC Plug** – Order 119-6028-00.

**Australia AC Power Cord** – Order 161-0066-11.

**Japan AC Power Cord** – Order 161-0298-00.

**China AC Power Cord** – Order 161-0304-00.

**Europe AC Power Cord** – Order 161-0066-09.

**North America 220V Power Cord** – Order 161-0066-12.

**Switzerland AC Power Cord** – Order 161-0154-00.

**United Kingdom AC Power Cord** – Order 161-0066-10.

**U.S. 110 V Power Cord** – Order 161-0066-00.

**Strand Hook** – Order 020-2422-00.

**Magnetic Shelf** – Order 436-0416-00.

**GPS Locator** – Order 116-0995-00.

**Floppy Disc Drive (1.4MB) USB (Incl. Cable)** – Order 119-6960-00.

**PCMCIA Memory Card (128 MB)** – Order 116-0996-00.

**PCL USB Printer, (no cable)** – Order 116-0999-00.

**USB Cable** – Order 174-4401-00.

**Hard Case (Multiple Module Trunk)** – Order 016-1889-00.

**Tek GPS Timing Reference** – Order YBGPS1.

**USB Female to PS2 Male Adapter** – Order 103-0454-00.

\*1 Not including application module.

\*2 Also included as standard accessories with Y400.

# NetTek® Analyzer

► Y400 Platform

## Contact Tektronix:

ASEAN / Australasia (65) 6356 3900

Austria +41 52 675 3777

Balkan, Israel, South Africa and other ISE Countries +41 52 675 3777

Belgium 07 81 60166

Brazil & South America 55 (11) 3741-8360

Canada 1 (800) 661-5625

Central East Europe, Ukraine and the Baltics +41 52 675 3777

Central Europe & Greece +41 52 675 3777

Denmark +45 80 88 1401

Finland +41 52 675 3777

France & North Africa +33 (0) 1 69 86 81 81

Germany +49 (221) 94 77 400

Hong Kong (852) 2585-6688

India (91) 80-22275577

Italy +39 (02) 25086 1

Japan 81 (3) 6714-3010

Luxembourg +44 (0) 1344 392400

Mexico, Central America & Caribbean 52 (55) 56666-333

Middle East, Asia and North Africa +41 52 675 3777

The Netherlands 090 02 021797

Norway 800 16098

People's Republic of China 86 (10) 6235 1230

Poland +41 52 675 3777

Portugal 80 08 12370

Republic of Korea 82 (2) 528-5299

Russia & CIS +7 (495) 7484900

South Africa +27 11 254 8360

Spain (+34) 901 988 054

Sweden 020 08 80371

Switzerland +41 52 675 3777

Taiwan 886 (2) 2722-9622

United Kingdom & Eire +44 (0) 1344 392400

USA 1 (800) 426-2200

For other areas contact Tektronix, Inc. at: 1 (503) 627-7111

Updated 28 February 2006

Our most up-to-date product information is available at:  
[www.tektronix.com](http://www.tektronix.com)

Product(s) are manufactured  
in ISO registered facilities.



Copyright © 2006, Tektronix. All rights reserved. Tektronix products are covered by U.S. and foreign patents, issued and pending. Information in this publication supersedes that in all previously published material. Specification and price change privileges reserved. TEKTRONIX and TEK are registered trademarks of Tektronix, Inc. All other trade names referenced are the service marks, trademarks or registered trademarks of their respective companies.

5/06 DVMWOW

2EW-17534-3

**Tektronix**  
Enabling Innovation