

Westover FBP-P500 Specs

Provided by www.AAATesters.com

FBP Probe Microscope

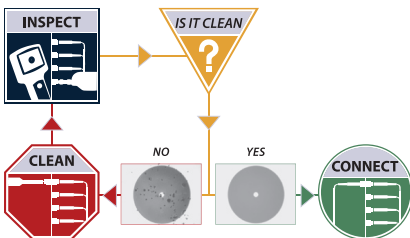
Handheld Analog Video Probe Microscope for Fiber Inspection



Applications

- Inspect both the bulkhead (female) and patch cord (male) sides of fiber interconnect as well as optical devices located in hard-to-reach places (transceivers)
- Inspect both simplex and ribbon (multi-fiber) connectors
- Use with a comprehensive selection of precision FBPT tips and adapters to inspect every connector and application

Inspect Before You ConnectSM



Contamination is the number 1 reason for troubleshooting optical networks. Proactive inspection and cleaning of fiber connectors can prevent poor signal performance, equipment damage, and network downtime.

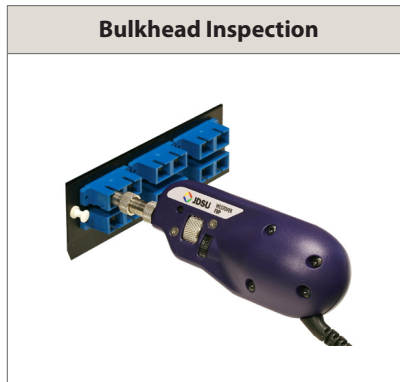
Key Features

- Ergonomic design and controls for easy one-hand operation
- Unique optics architecture and comprehensive selection of precision inspection tips and adapters for inspecting every connector and application
- Patented RibbonDrive™ inspection tips for inspecting both X- and Y-axis of multi-fiber/ribbon array
- Compatible with a full range of display devices or USB analog-to-digital converter for use with T-BERD/MTS platforms or PC/laptop
- Available in single- or dual-magnification (200/400X)
- Coaxial illumination provides crisp, clear view of fiber end face conditions

FBP Probe Microscope

The JDSU Westover FBP-series video probe microscopes provide the ultimate fiber inspection tool. The key components of the probe include an integrated light source, a 1/3-inch complementary metal oxide semiconductor (CMOS) video camera, a focusing mechanism, a single- or dual-magnification (200/400X) control, and an image capture button. It is powered through the universal serial bus (USB) port and uses a blue coaxial light emitting diode (LED) light source with an advanced camera system to produce the highest resolution possible. It fits and operates comfortably and easily in-hand, letting users inspect hard-to-reach connectors that are installed on backside of patch panels or inside optical devices. The focus control is conveniently located on the probe to easily adjust the focus of the fiber image, while the dual-magnification control lets users quickly change between high- and low-magnification views. The probe offers a built-in QuickCapture™ button to instantly capture the fiber end face image on the display, which complements its use with JDSU optical test units.

Bulkhead Inspection



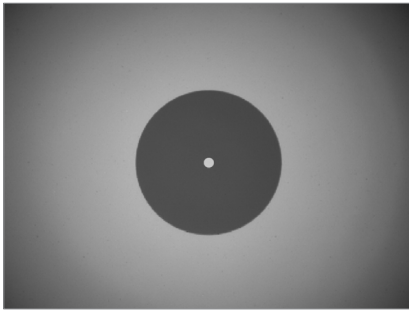
Patch Cord Inspection



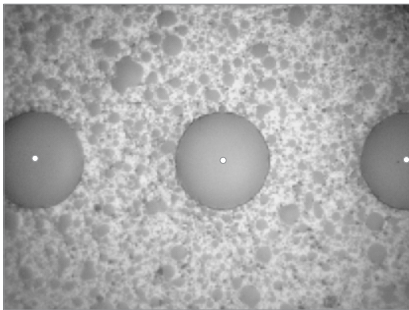


Over 250 Inspection Tips & Adapters
For Every Connector & Application

Simplex Fiber



Multi-Fiber (Ribbon)



FBP Probe with
HP3-60-P4 Fiber Inspection and Test System

FBPT Inspection Tips and Adapters

The JDSU interchangeable precision stainless-steel inspection tips enable inspection of every connector type located in bulkheads and patch cords. Their careful design and engineering enables consistent and accurate inspection of fiber, and their unique optics architecture provides true versatility and adaptability for inspecting every connector and application in your network. **With over 250 individual tips and adapters specifically engineered for the FBP probe line**, JDSU offers the industry's most comprehensive fiber inspection solutions.

The patented JDSU RibbonDrive specialty tips let users inspect high-density, multi-fiber array connectors mounted within a bulkhead adapter. A precision-keyed mating adapter interface secures each mated tip with its connector. The patented *panning knobs* let users view each fiber individually in both the X- and Y-AXIS.

Tip Image	Description
	Standard Bulkhead Tips: <i>Inspect bulkheads (female)</i>
	Standard Patch Cord Tips: <i>Inspect patch cords (male)</i>
	Long Reach Tips: <i>Inspect bulkhead (female) with 1/2-inch longer reach</i>
	APC Tips: <i>Inspect connectors with angled polish</i>
	Angled (60°) Tips: <i>Inspect hard-to-reach connectors and optical devices</i>
	RibbonDrive™ Tips: <i>Inspect high-density, multi-fiber array connectors</i>

FBP Probe Specifications

Dimensions	46 x 43 x 140 mm (1.8 x 1.7 x 5.5 in)
Weight	180 g (6.35 oz)
Optical magnification	200X, 400X or 200/400X
Connector type	4- or 6-pin Hirose™
Camera type	1/3-in CMOS
Light source	Blue LED, internal to probe, 100,000+ hours
Lighting technique	Coaxial
Focus control	Adjustable, in-probe
Power source	Display device, USB port
Horizontal field-of-view (FOV) (200X)	550 µm
Horizontal FOV (400X)	350 µm
Warranty	1 yr

Hirose is a trademark of Hirose Electronic Corporation.

Ordering Information

FBP-P1	Video inspection probe microscope, NTSC, 200X, 4-pin out
FBP-P1-400	Video inspection probe microscope, NTSC, 400X, 4-pin out
FBP-P100	Video inspection QuickCapture probe microscope, NTSC, 200X, 6-pin out w/ USB
FBP-P105	Video inspection QuickCapture probe microscope, NTSC, 200X, 6-pin out w/o USB
FBP-P2	Video inspection probe microscope, PAL, 200X, 4-pin out
FBP-P200	Video inspection QuickCapture probe microscope, PAL, 200X, 6-pin out w/ USB
FBP-P205	Video inspection QuickCapture probe microscope, PAL, 200X, 6-pin out w/o USB
FBP-P5	Video inspection probe microscope, NTSC, 200/400X, 4-pin out
FBP-P500	Video inspection QuickCapture probe microscope, NTSC, 200/400X, 6-pin out w/ USB
FBP-P505	Video inspection QuickCapture probe microscope, NTSC, 200/400X, 6-pin out w/o USB
FBP-P6	Video inspection probe microscope, PAL, 200/400X, 4-pin out
FBP-P600	Video inspection QuickCapture probe microscope, PAL, 200/400X, 6-pin out w/ USB
FBP-P605	Video inspection QuickCapture probe microscope, PAL, 200/400X, 6-pin out w/o USB
FBP-P7	Video inspection probe microscope, NTSC, 250/500X, 4-pin out
FBP-PX1	Video inspection probe microscope, NTSC, 200X, 4-pin out, no barrel assembly
FBP-PX100	Video inspection QuickCapture probe microscope, NTSC, 200X, 6-pin out w/o USB/barrel
FBP-PX2	Video inspection probe microscope, PAL, 200X, 4-pin out, no barrel assembly
FBP-PX200	Video inspection QuickCapture probe microscope, PAL, 200X, 6-pin out w/o USB/barrel
FBP-PX5	Video inspection probe microscope, NTSC, 200/400X, 4-pin out, no barrel assembly
FBP-PX500	Video inspection QuickCapture probe microscope, NTSC, 200/400X, 6-pin out w/o USB/barrel
FBP-PX600	Video inspection QuickCapture probe microscope, PAL, 200/400X, 6-pin out w/o USB/barrel

Test & Measurement Regional Sales

NORTH AMERICA TOLL FREE: 1 866 228 3762 FAX: +1 301 353 9216	LATIN AMERICA TEL: +1 954 688 5660 FAX: +1 954 345 4668	ASIA PACIFIC TEL: +852 2892 0990 FAX: +852 2892 0770	EMEA TEL: +49 7121 86 2222 FAX: +49 7121 86 1222	www.jdsu.com/inspect
---	--	---	---	--